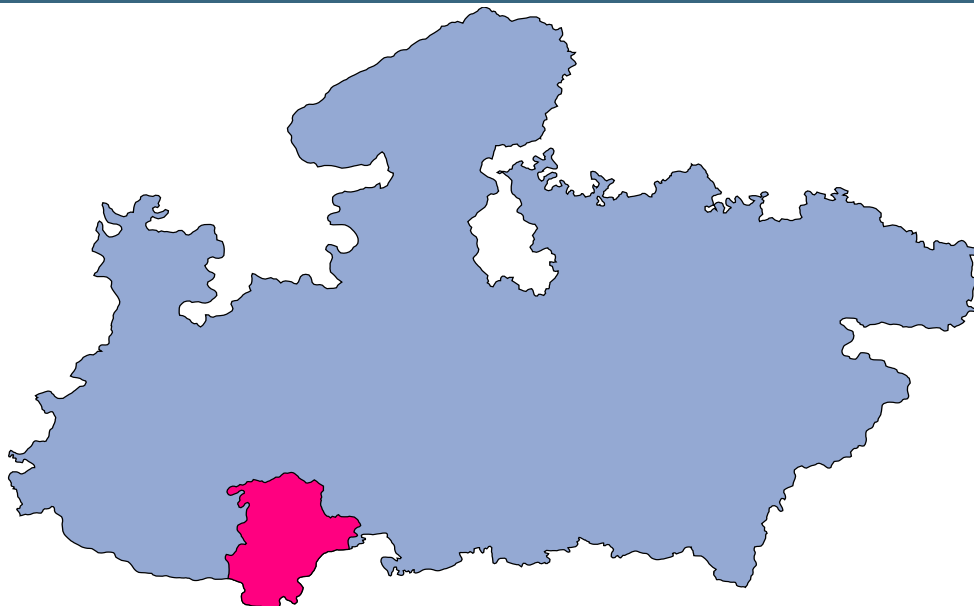


# East Nimar



## MONITORING XI PLAN GOALS



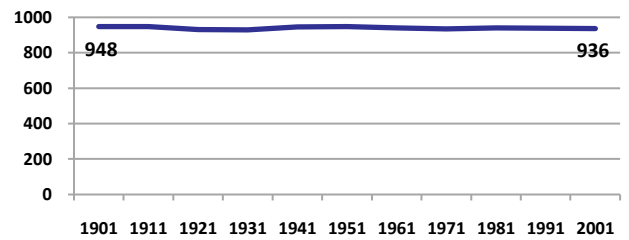
## East Nimar

### DEMOGRAPHICS

Location/Caste	Total	Rural	Urban	SC	ST	Non SC/ST	Time Period
Population size (000)	1713	-	-	-	-	-	(2001)
Average annual population growth rate (%)	1.8	1.8	1.6	-	-	-	(2001)
Decadal growth rate (%)	19.7	-	-	-	-	-	(2001)
Population density (Persons per Sq Km)	159	-	-	-	-	-	(2001)
Sex ratio (Females per 1000 males)	936	936	936	928	959	926	(2001)
Sex ratio (0-6 years, Females per 1000 males)	941	945	929	975	979	910	(2001)
Level of urbanization (%)	26.8	-	-	-	-	-	(2001)

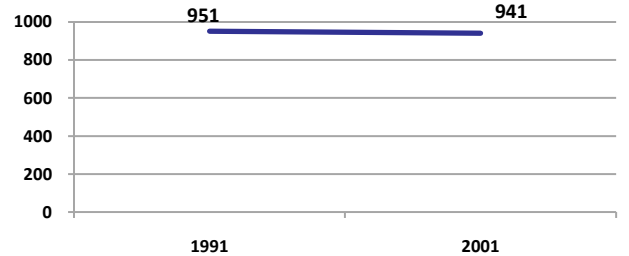
#### Sex ratio

Females per 1000 males



#### Sex ratio, 0-6 years

Females per 1000 males



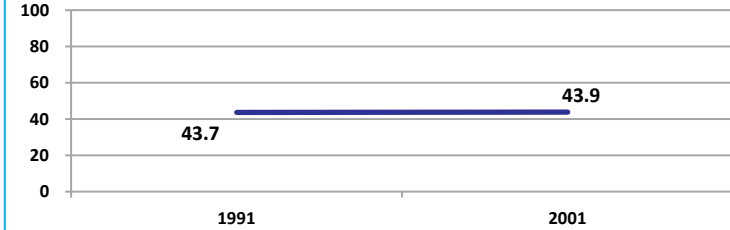
Source: Census

Source: Census

### ECONOMY

#### Work participation rate

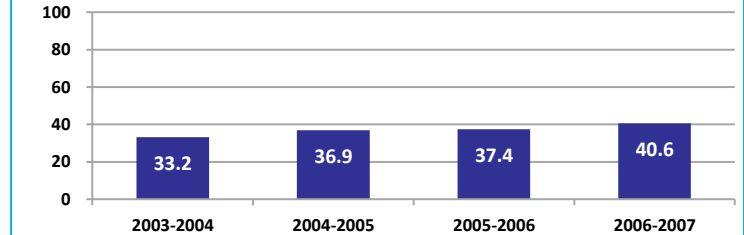
Percent



Source: Census

#### Net sown area irrigated

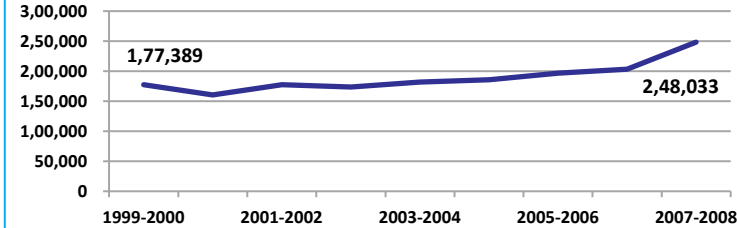
Percent



Source: Census, 2001 Projected

#### Net district domestic product at constant (1990-2000) prices

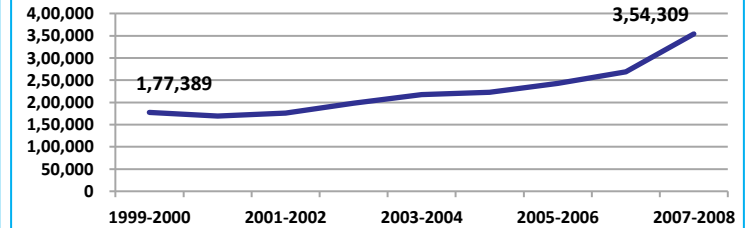
Lakhs



Source: DES, 2009

#### Net district domestic product at current prices

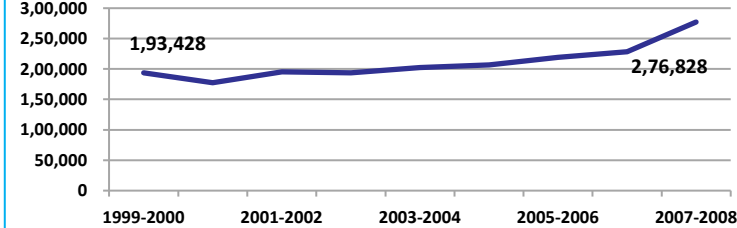
Lakhs



Source: DES, 2009

#### Gross district domestic Product at constant (1990-2000) prices

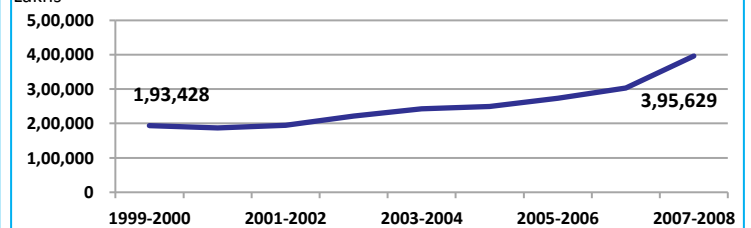
Lakhs



Source: DES, 2009

#### Gross district domestic product at current prices

Lakhs



Source: DES, 2009



State Planning Commission



## East Nimar

### ECONOMY

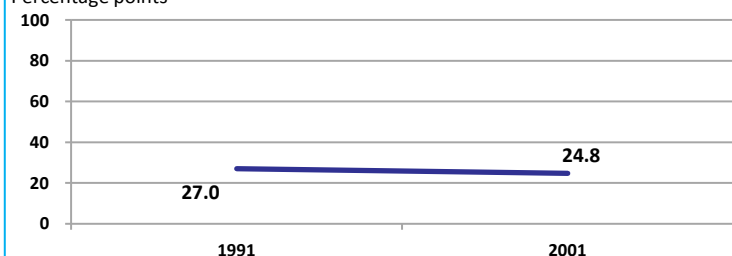
Location/Caste	Total	Rural	Urban	SC	ST	Non SC/ST	Time Period
Industrial working population (%)	960439	-	-	-	-	-	(2001)
Marginal working population (%)	7.3	-	-	-	-	-	(2001)
Main working population (%)	36.7	-	-	-	-	-	(2001)
Farmers and agricultural labour in population (%)	33.1	-	-	-	-	-	(2001)
Schedule caste population (%)	11.1	11.4	10.2	-	-	-	(2001)
Schedule tribe population (%)	29.7	39.1	3.9	-	-	-	(2001)
Households having none of the six household assets (Radio/Transistor, Television, Telephone, Bicycle, Two wheeler, Four wheeler) (#)	159881	141497	18384	22091	65880	-	(2001)

Source: Census

### EDUCATION

#### Gender gap in literacy rate (Male-Female)

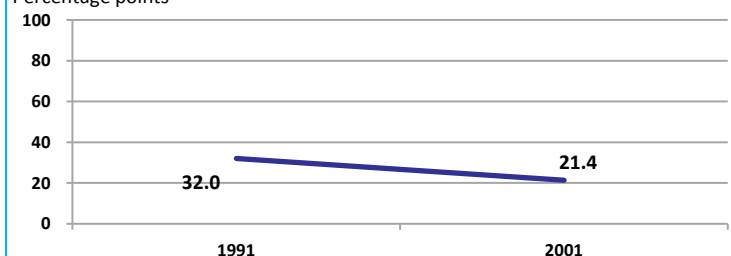
Percentage points



Source: Census

#### Gap in literacy rate by residence (Urban-Rural)

Percentage points



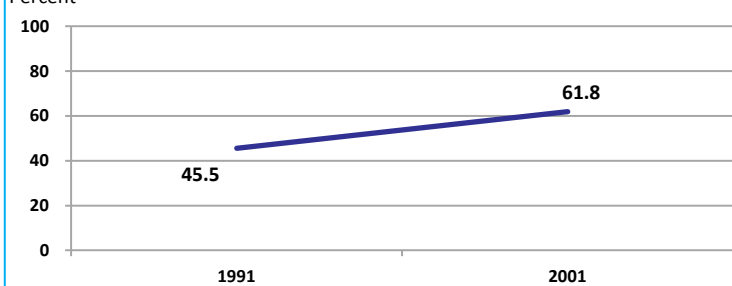
Source: Census

Location/Sex/Caste	Total	Male	Female	Rural	Urban	SC	ST	Time Period
Primary gross enrolment ratio **	103.9	104.7	103.1	-	-	-	-	(2008-2009)
Upper primary gross enrolment ratio **	97.2	98.2	95.8	-	-	-	-	(2008-2009)
Elementary gross enrolment ratio **	102.2	103.0	101.3	-	-	-	-	(2008-2009)
Primary dropout rate (%) **	-	20.1	24.0	-	-	-	-	(2008-2009)
Ratio of literate women to men (15-24 years) *	0.6	-	-	0.6	0.8	0.6	0.4	(2001)
Persons age 15+ completed primary education (%) *	39.3	49.8	28.1	29.7	62.9	12.0	8.5	(2001)

Source: Census \*/Rajya Shiksha Kendra \*\*

#### Literacy rate 7+

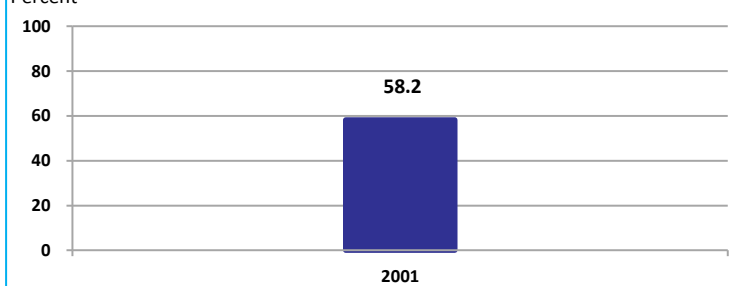
Percent



Source: Census

#### Literacy rate 15+

Percent



Source: Census



## East Nimar

### HEALTH & NUTRITION

Contraceptive prevalence rate (15-44 yr)	53.3	Fully immunized children (12-23 months)	34.2	Prevalence of underweight (moderate and severe, <6 yr)	64.7
--	------	---	------	--	------

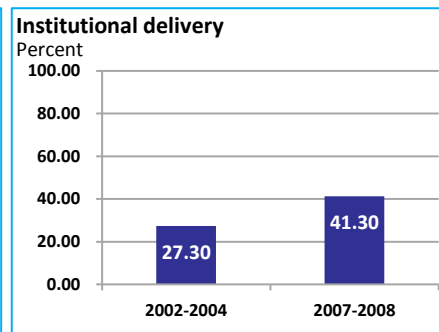
Source: DLHS, 2002-2004



Source: DLHS, 2002-2004

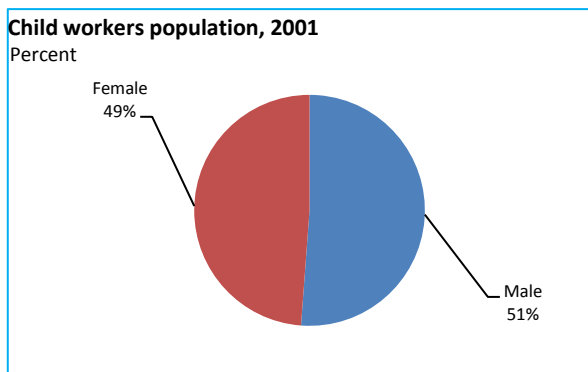


Source: DLHS, 2002-2004

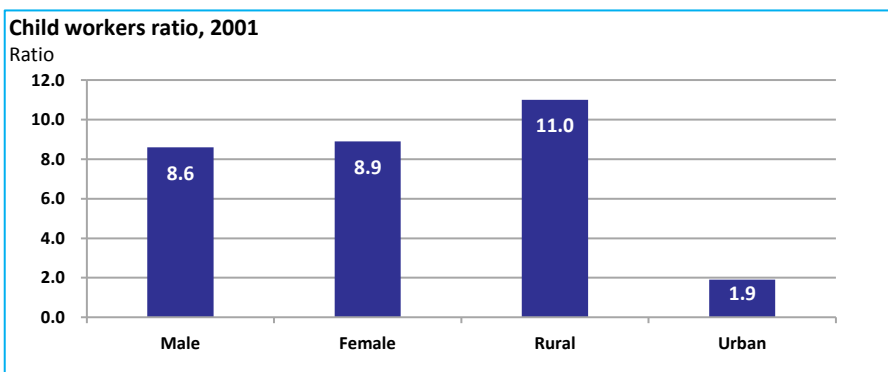


Source: DLHS

### CHILD PROTECTION



Source: Census



### ENVIRONMENT

Location/Caste	Total	Rural	Urban	SC	ST	Time Period
Households living in dilapidated houses (#)	12933	10090	2843	2183	4654	(2001)
Households without electricity (#)	53357	47486	5871	5863	27217	(2001)
Households without latrines (#)	235653	205790	29863	34639	83690	(2001)

Source: Census

**Habitation with drinking water access**

<40 LPCD	40 to 55 LPCD	With 0 population coverage	With 100% population coverage	With population coverage > 0 and < 100%	Time Period
0	420	-	2221	-	(2009)

Source: IMIS

### INFRASTRUCTURE

Proportion of villages having any health facility PHC/SHC/AYUSH (%)	44.9	(2001)	Proportion of villages having at least a primary school (%)	93.7	(2001)
---	------	--------	---	------	--------

Source: Census

