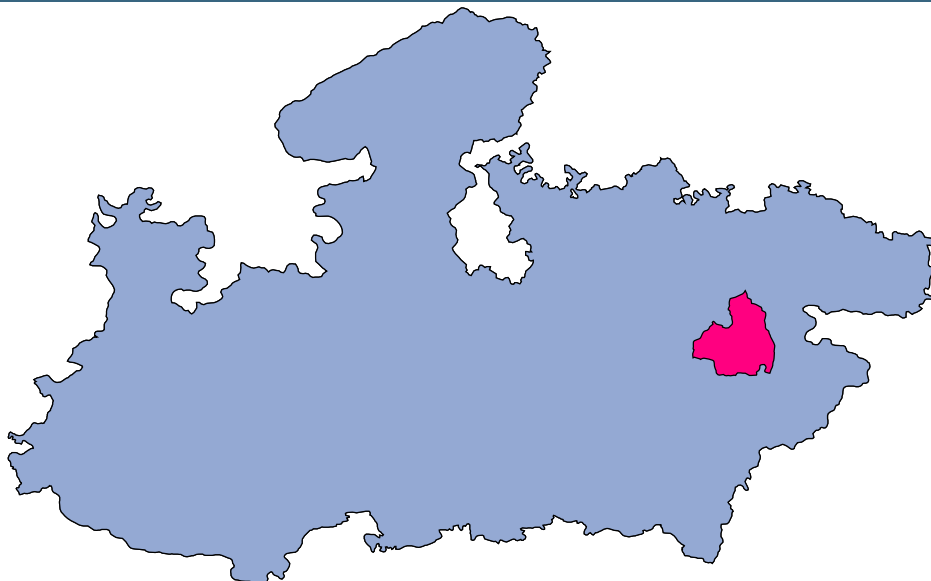




# Umaria



## MONITORING XI PLAN GOALS



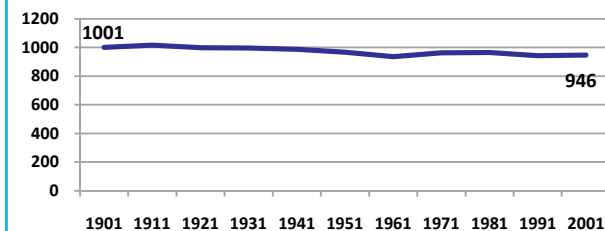
## Umaria

### DEMOGRAPHICS

Location/Caste	Total	Rural	Urban	SC	ST	Non SC/ST	Time Period
Population size (000)	516	-	-	-	-	-	(2001)
Average annual population growth rate (%)	2.0	2.1	1.7	-	-	-	(2001)
Decadal growth rate (%)	22.6	-	-	-	-	-	(2001)
Population density (Persons per Sq Km)	127	-	-	-	-	-	(2001)
Sex ratio (Females per 1000 males)	946	952	916	950	972	924	(2001)
Sex ratio (0-6 years, Females per 1000 males)	959	962	938	925	917	842	(2001)
Level of urbanization (%)	16.1	-	-	-	-	-	(2001)

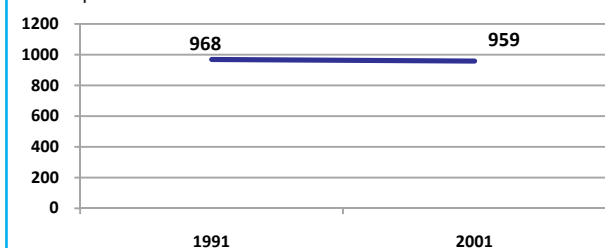
#### Sex ratio

Females per 1000 males



#### Sex ratio, 0-6 years

Females per 1000 males



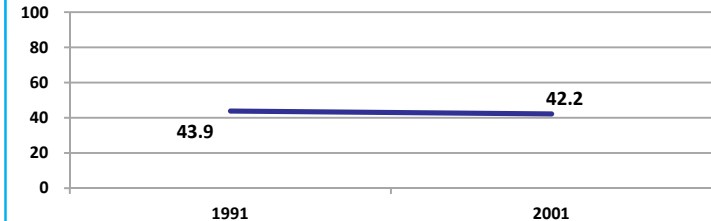
Source: Census

Source: Census

### ECONOMY

#### Work participation rate

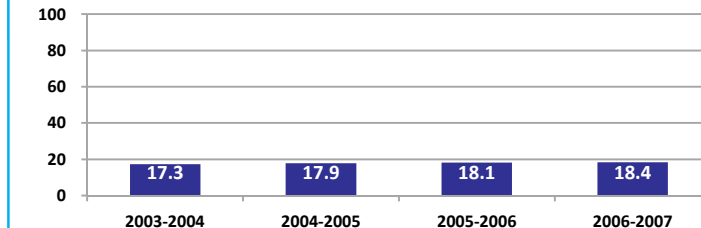
Percent



Source: Census

#### Net sown area irrigated

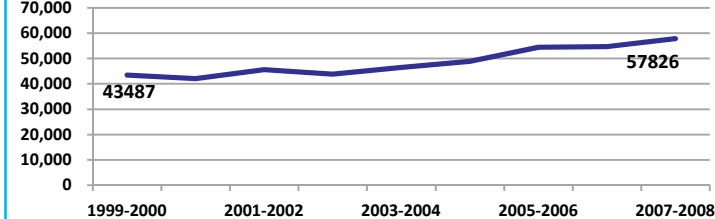
Percent



Source: Census, 2001 Projected

#### Net District Domestic Product at constant (1990-2000) prices

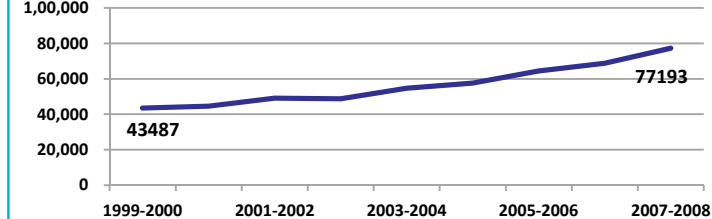
Lakhs



Source: DES, 2009

#### Net District Domestic Product at current prices

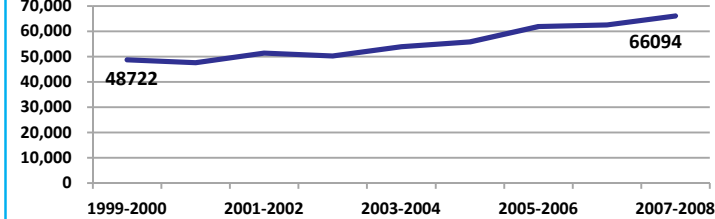
Lakhs



Source: DES, 2009

#### Gross District Domestic Product at constant (1990-2000) prices

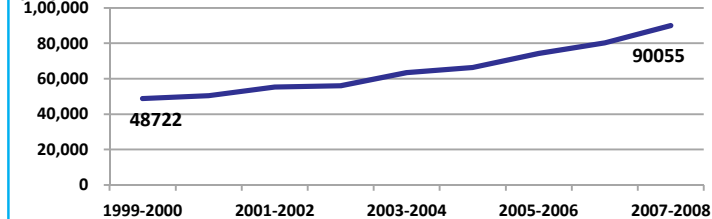
Lakhs



Source: DES, 2009

#### Gross District Domestic Product at current prices

Lakhs



Source: DES, 2009



## Umaria

### ECONOMY

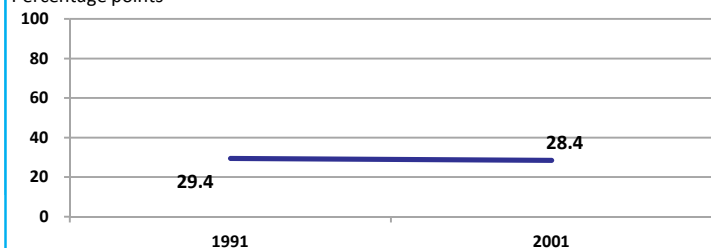
Location/Caste	Total	Rural	Urban	SC	ST	Non SC/ST	Time Period
Industrial working population (%)	298426	-	-	-	-	-	(2001)
Marginal working population (%)	14.7	-	-	-	-	-	(2001)
Main working population (%)	27.5	-	-	-	-	-	(2001)
Farmers and agricultural labour in population (%)	32.3	-	-	-	-	-	(2001)
Schedule caste population (%)	6.8	6.3	9.5	-	-	-	(2001)
Schedule tribe population (%)	44.0	48.2	22.2	-	-	-	(2001)
Households having none of the six household assets (Radio/Transistor, Television, Telephone, Bicycle, Two wheeler, Four wheeler) (#)	46753	42411	4342	3671	28017	-	(2001)

Source: Census

### EDUCATION

#### Gender gap in literacy rate (Male-Female)

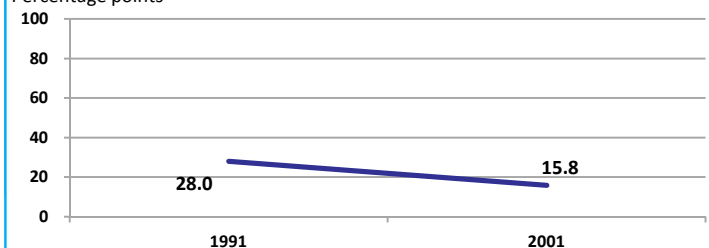
Percentage points



Source: Census

#### Gap in literacy rate by residence (Urban-Rural)

Percentage points



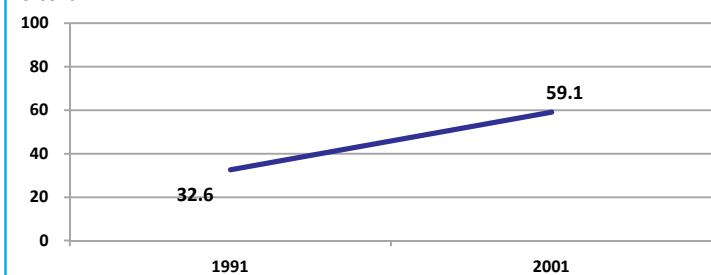
Source: Census

Location/Sex/Caste	Total	Male	Female	Rural	Urban	SC	ST	Time Period
Primary gross enrolment ratio **	104.4	104.0	104.8	-	-	-	-	(2008-2009)
Upper primary gross enrolment ratio **	105.1	104.8	105.4	-	-	-	-	(2008-2009)
Elementary gross enrolment ratio **	104.6	104.3	105.0	-	-	-	-	(2008-2009)
Primary dropout rate (%) **	-	14.1	13.5	-	-	-	-	(2008-2009)
Ratio of literate women to men (15-24 years) *	0.6	-	-	0.6	0.7	0.6	0.5	(2001)
Persons age 15+ completed primary education (%) *	38.0	51.9	23.3	33.5	60.3	16.9	7.5	(2001)

Source: Census \*/Rajya Shiksha Kendra \*\*

#### Literacy rate 7+

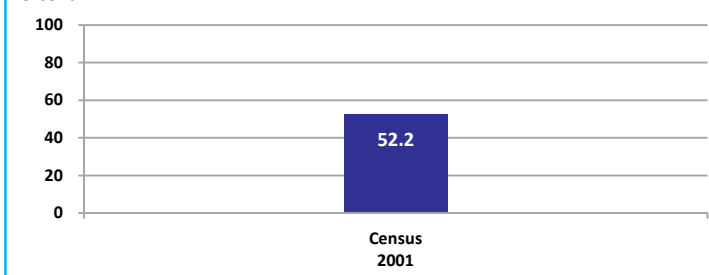
Percent



Source: Census

#### Literacy rate 15+

Percent

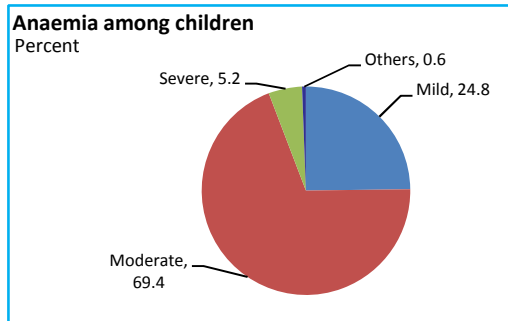


## Umaria

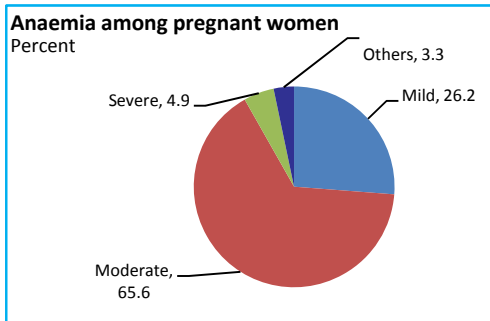
### HEALTH & NUTRITION

Contraceptive prevalence rate (15-44 yr)	45.7	Fully immunized children (12-23 months)	21.6	Prevalence of underweight (moderate and severe, <6 yr)	46.3
--	------	---	------	--	------

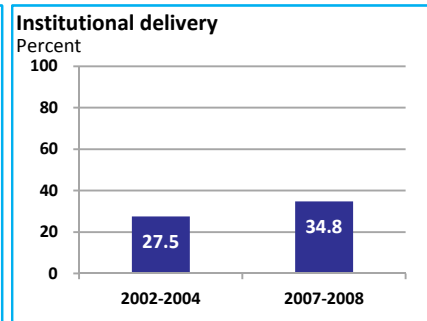
Source: DLHS, 2002-2004



Source: DLHS, 2002-2004

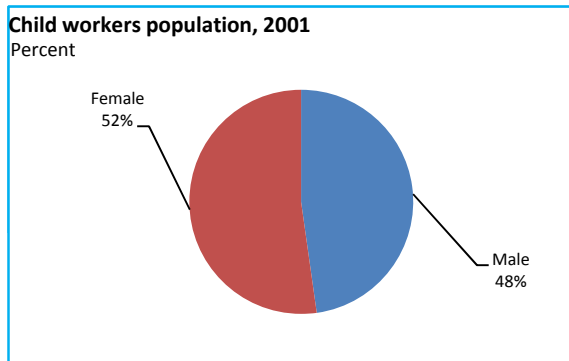


Source: DLHS, 2002-2004

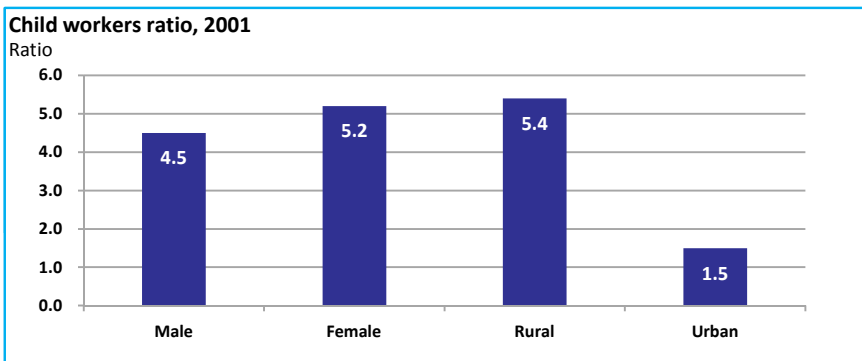


Source: DLHS

### CHILD PROTECTION



Source: Census



### ENVIRONMENT

Location/Caste	Total	Rural	Urban	SC	ST	Time Period
Households living in dilapidated houses (#)	2523	2187	336	141	1391	(2001)
Households without electricity (#)	54939	51448	3491	3533	33084	(2001)
Households without latrines (#)	91286	82311	8975	7475	47190	(2001)

Source: Census

**Habitation with drinking water access**

<40 LPCD	40 to 55 LPCD	With 0 population coverage	With 100% population coverage	With population coverage > 0 and < 100%	Time Period
0	190	-	212	-	(2009)

Source: IMIS

### INFRASTRUCTURE

Proportion of villages having any health facility PHC/SHC/AYUSH (%)	23.8	(2001)	Proportion of villages having at least a primary school (%)	77.7	(2001)
---	------	--------	---	------	--------

Source: Census

