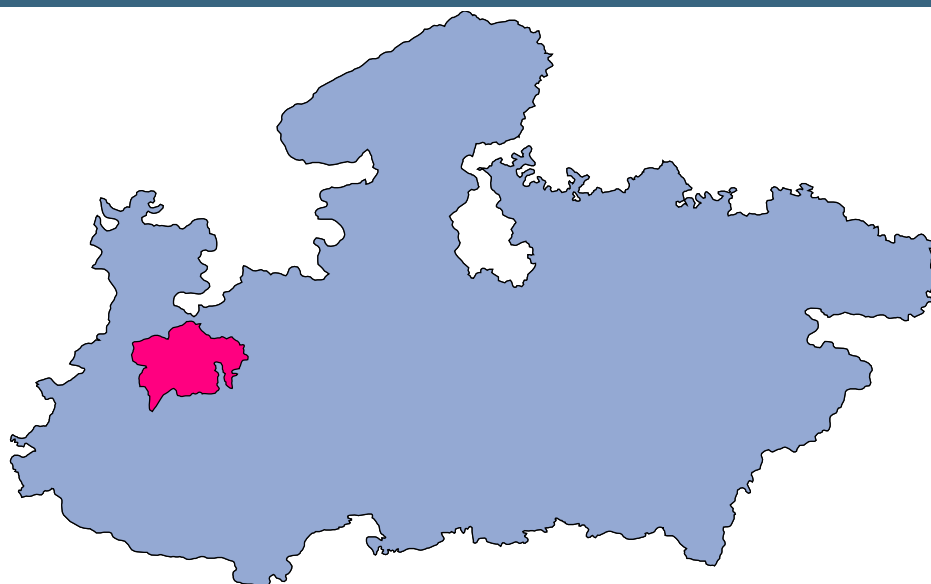




Ujjain



MONITORING XI PLAN GOALS



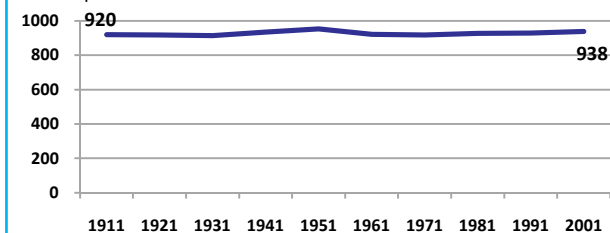
Ujjain

DEMOGRAPHICS

Location/Caste	Total	Rural	Urban	SC	ST	Non SC/ST	Time Period
Population size (000)	1711	-	-	-	-	-	(2001)
Average annual population growth rate (%)	2.1	2.3	1.9	-	-	-	(2001)
Decadal growth rate (%)	23.7	-	-	-	-	-	(2001)
Population density (Persons per Sq Km)	281	-	-	-	-	-	(2001)
Sex ratio (Females per 1000 males)	938	946	925	946	920	939	(2001)
Sex ratio (0-6 years, Females per 1000 males)	938	950	914	942	905	857	(2001)
Level of urbanization (%)	38.7	-	-	-	-	-	(2001)

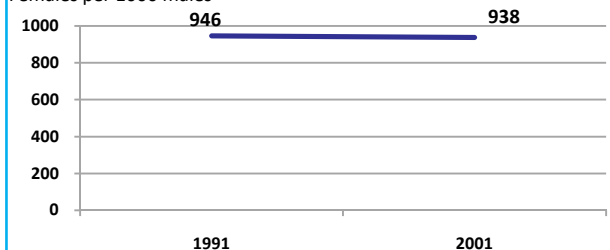
Sex ratio

Females per 1000 males



Sex ratio, 0-6 years

Females per 1000 males



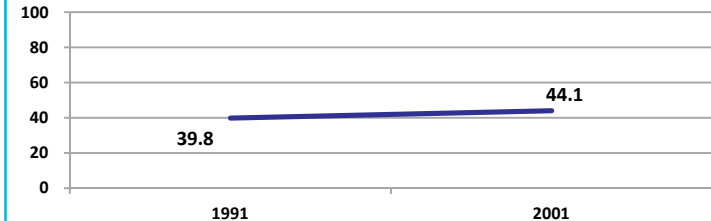
Source: Census

Source: Census

ECONOMY

Work participation rate

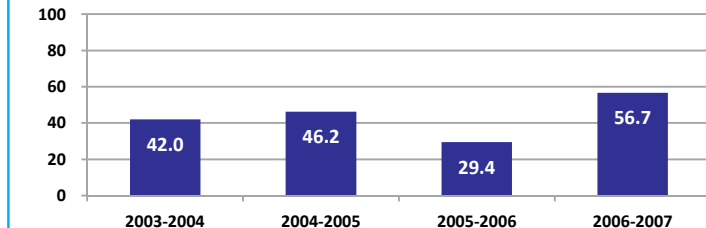
Percent



Source: Census

Net sown area irrigated

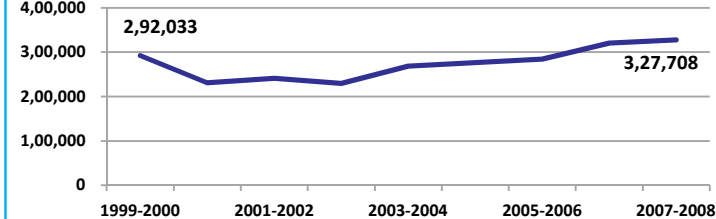
Percent



Source: Census, 2001 Projected

Net District Domestic Product at constant (1990-2000) prices

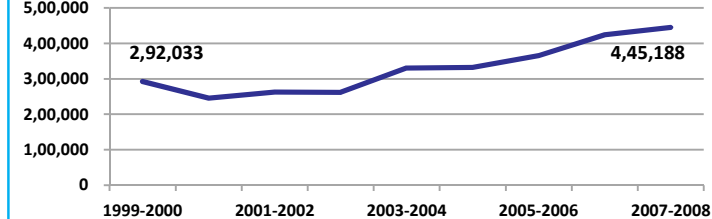
Lakhs



Source: DES, 2009

Net District Domestic Product at current prices

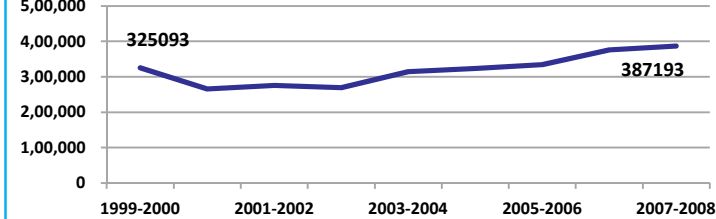
Lakhs



Source: DES, 2009

Gross District Domestic Product at constant (1990-2000) prices

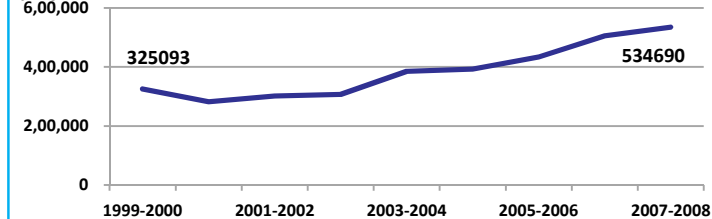
Lakhs



Source: DES, 2009

Gross District Domestic Product at current prices

Lakhs



Source: DES, 2009



Ujjain

ECONOMY

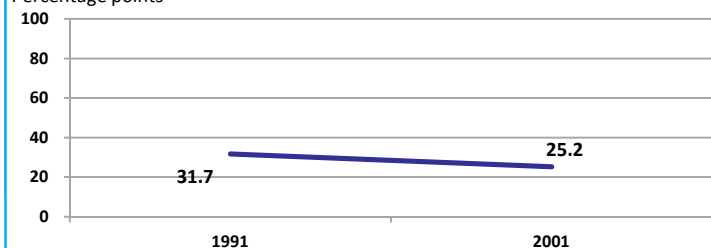
Location/Caste	Total	Rural	Urban	SC	ST	Non SC/ST	Time Period
Industrial working population (%)	955694	-	-	-	-	-	(2001)
Marginal working population (%)	9.8	-	-	-	-	-	(2001)
Main working population (%)	34.4	-	-	-	-	-	(2001)
Farmers and agricultural labour in population (%)	29.8	-	-	-	-	-	(2001)
Schedule caste population (%)	24.7	30.0	16.3	-	-	-	(2001)
Schedule tribe population (%)	3.1	3.8	2.1	-	-	-	(2001)
Households having none of the six household assets (Radio/Transistor, Television, Telephone, Bicycle, Two wheeler, Four wheeler) (#)	90297	74925	15372	35478	3988	-	(2001)

Source: Census

EDUCATION

Gender gap in literacy rate (Male-Female)

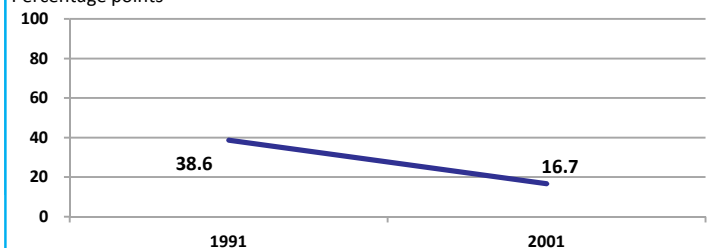
Percentage points



Source: Census

Gap in literacy rate by residence (Urban-Rural)

Percentage points



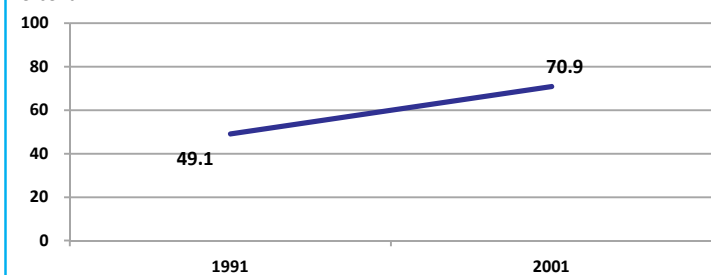
Source: Census

Location/Sex/Caste	Total	Male	Female	Rural	Urban	SC	ST	Time Period
Primary gross enrolment ratio **	106.3	105.5	107.1	-	-	-	-	(2008-2009)
Upper primary gross enrolment ratio **	97.5	98.5	96.2	-	-	-	-	(2008-2009)
Elementary gross enrolment ratio **	103.8	103.5	104.2	-	-	-	-	(2008-2009)
Primary dropout rate (%) **	-	11.4	14.5	-	-	-	-	(2008-2009)
Ratio of literate women to men (15-24 years) *	0.7	-	-	0.6	0.8	0.6	0.6	(2001)
Persons age 15+ completed primary education (%) *	47.9	62.1	33.0	32.4	70.3	19.2	14.7	(2001)

Source: Census */Rajya Shiksha Kendra **

Literacy rate 7+

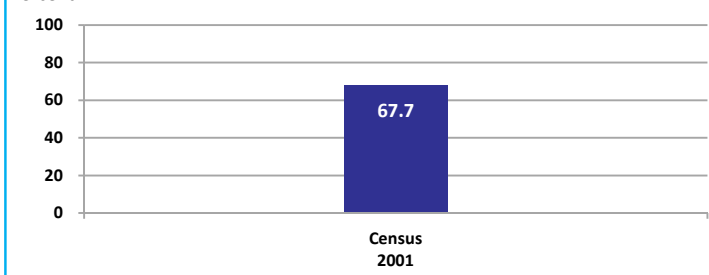
Percent



Source: Census

Literacy rate 15+

Percent

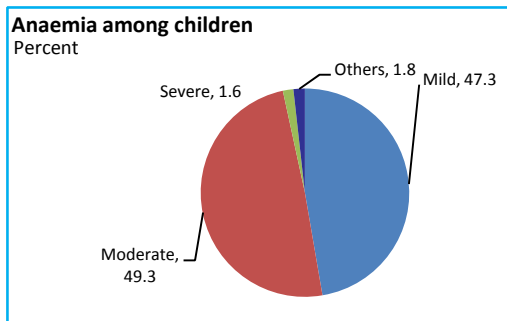


Ujjain

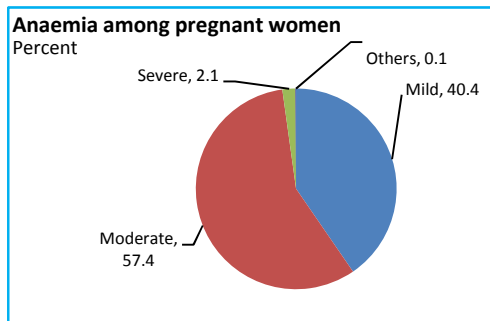
HEALTH & NUTRITION

Contraceptive prevalence rate (15-44 yr)	60.4	Fully immunized children (12-23 months)	37.0	Prevalence of underweight (moderate and severe, <6 yr)	56.7
--	------	---	------	--	------

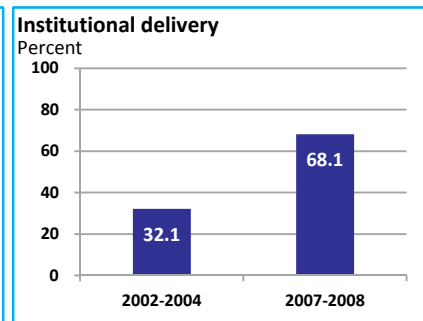
Source: DLHS, 2002-2004



Source: DLHS, 2002-2004

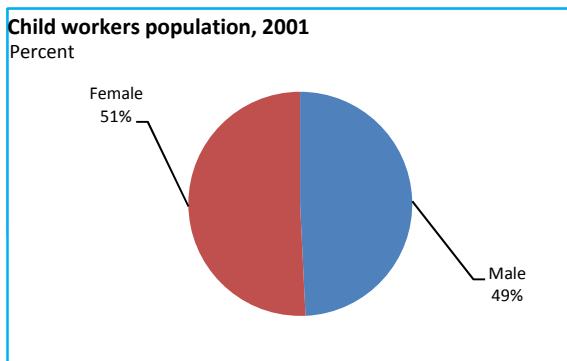


Source: DLHS, 2002-2004

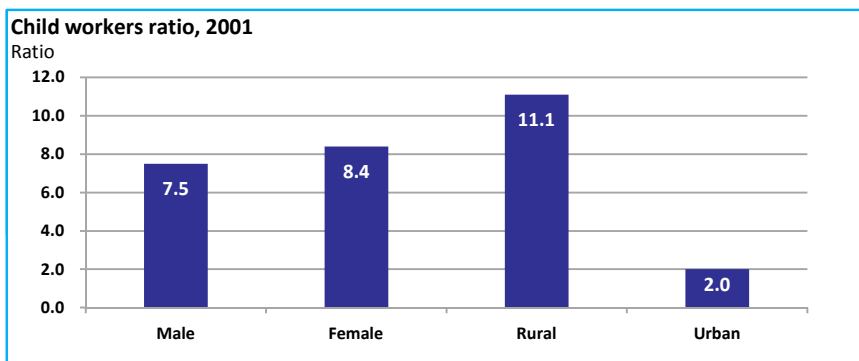


Source: DLHS

CHILD PROTECTION



Source: Census



ENVIRONMENT

Location/Caste	Total	Rural	Urban	SC	ST	Time Period
Households living in dilapidated houses (#)	6578	3748	2830	2792	457	(2001)
Households without electricity (#)	28894	24769	4125	10066	1218	(2001)
Households without latrines (#)	184396	159896	24500	66562	7084	(2001)

Source: Census

Habitation with drinking water access

<40 LPCD	40 to 55 LPCD	With 0 population coverage	With 100% population coverage	With population coverage > 0 and < 100%	Time Period
0	320	-	799	-	(2009)

Source: IMIS

INFRASTRUCTURE

Proportion of villages having any health facility PHC/SHC/AYUSH (%)	23.2	(2001)	Proportion of villages having at least a primary school (%)	93.9	(2001)
---	------	--------	---	------	--------

Source: Census

