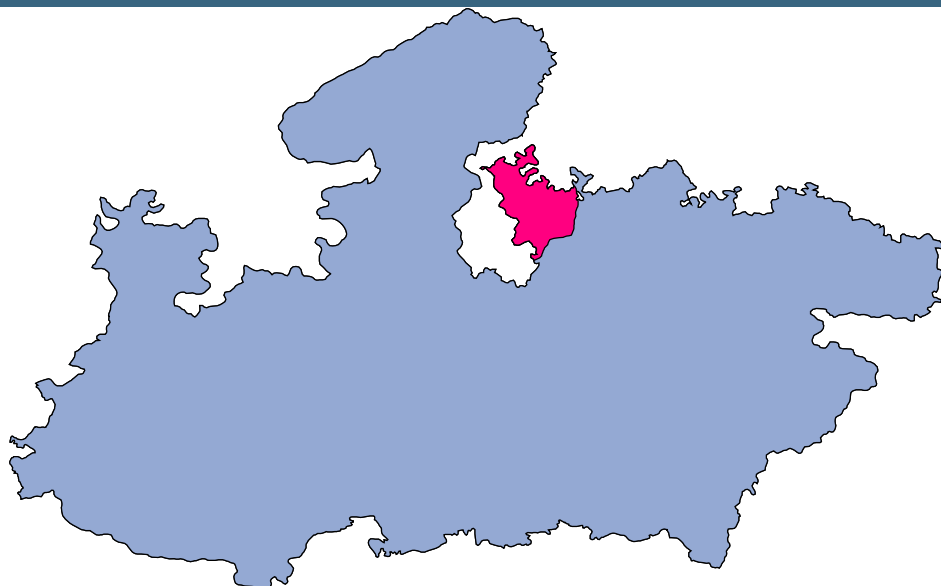




Tikamgarh



MONITORING XI PLAN GOALS



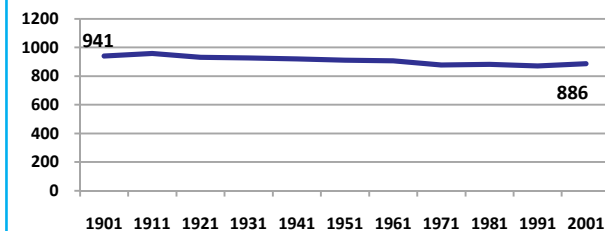
Tikamgarh

DEMOGRAPHICS

| Location/Caste | Total | Rural | Urban | SC | ST | Non SC/ST | Time Period |
|---|-------|-------|-------|-----|-----|-----------|-------------|
| Population size (000) | 1203 | - | - | - | - | - | (2001) |
| Average annual population growth rate (%) | 2.5 | 2.4 | 2.9 | - | - | - | (2001) |
| Decadal growth rate (%) | 27.9 | - | - | - | - | - | (2001) |
| Population density (Persons per Sq Km) | 238 | - | - | - | - | - | (2001) |
| Sex ratio (Females per 1000 males) | 886 | 883 | 899 | 876 | 947 | 886 | (2001) |
| Sex ratio (0-6 years, Females per 1000 males) | 916 | 913 | 927 | 947 | 993 | 816 | (2001) |
| Level of urbanization (%) | 17.7 | - | - | - | - | - | (2001) |

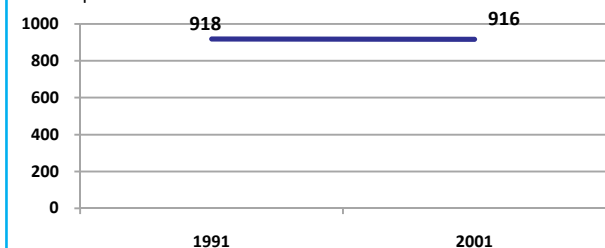
Sex ratio

Females per 1000 males



Sex ratio, 0-6 years

Females per 1000 males



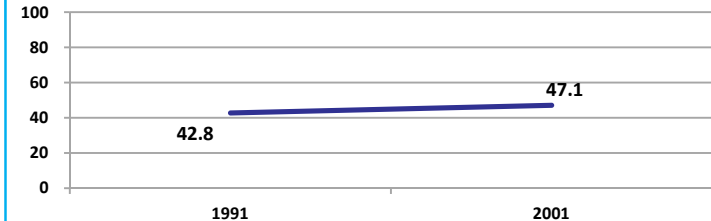
Source: Census

Source: Census

ECONOMY

Work participation rate

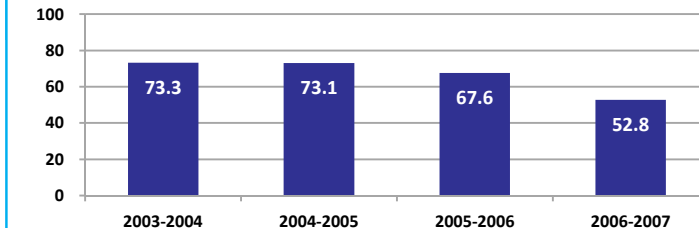
Percent



Source: Census

Net sown area irrigated

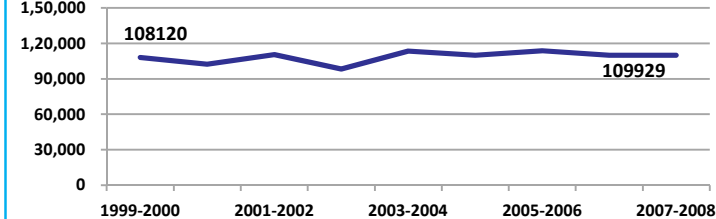
Percent



Source: Census, 2001 Projected

Net District Domestic Product at constant (1990-2000) prices

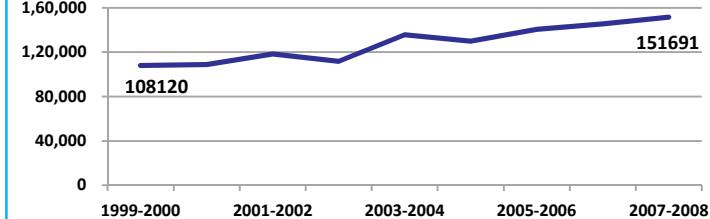
Lakhs



Source: DES, 2009

Net District Domestic Product at current prices

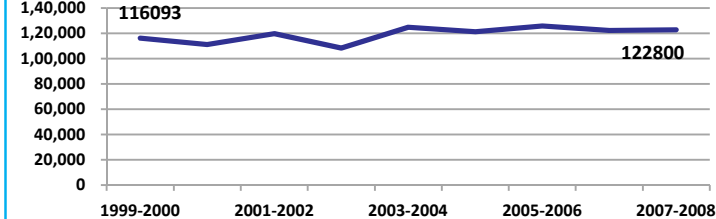
Lakhs



Source: DES, 2009

Gross District Domestic Product at constant (1990-2000) prices

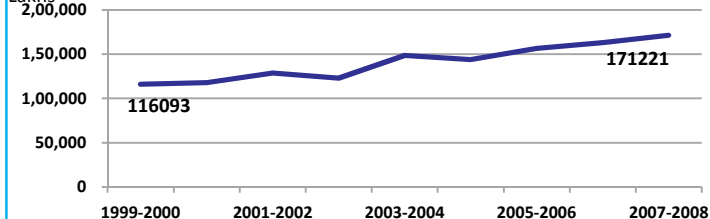
Lakhs



Source: DES, 2009

Gross District Domestic Product at current prices

Lakhs



Source: DES, 2009



State Planning Commission



Tikamgarh

ECONOMY

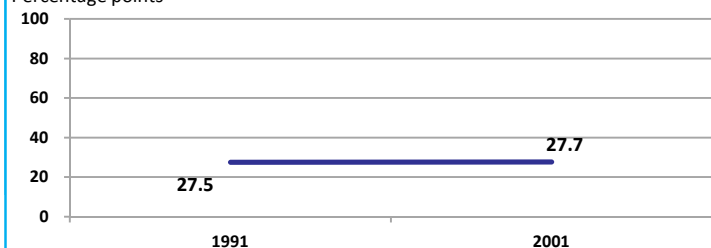
| Location/Caste | Total | Rural | Urban | SC | ST | Non SC/ST | Time Period |
|--|--------|-------|-------|-------|------|-----------|-------------|
| Industrial working population (%) | 636821 | - | - | - | - | - | (2001) |
| Marginal working population (%) | 14.2 | - | - | - | - | - | (2001) |
| Main working population (%) | 32.9 | - | - | - | - | - | (2001) |
| Farmers and agricultural labour in population (%) | 38.2 | - | - | - | - | - | (2001) |
| Schedule caste population (%) | 24.3 | 25.0 | 20.8 | - | - | - | (2001) |
| Schedule tribe population (%) | 4.3 | 4.7 | 2.4 | - | - | - | (2001) |
| Households having none of the six household assets (Radio/Transistor, Television, Telephone, Bicycle, Two wheeler, Four wheeler) (#) | 80525 | 72707 | 7818 | 23373 | 7705 | - | (2001) |

Source: Census

EDUCATION

Gender gap in literacy rate (Male-Female)

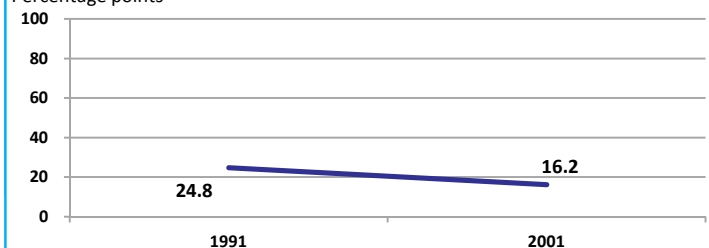
Percentage points



Source: Census

Gap in literacy rate by residence (Urban-Rural)

Percentage points



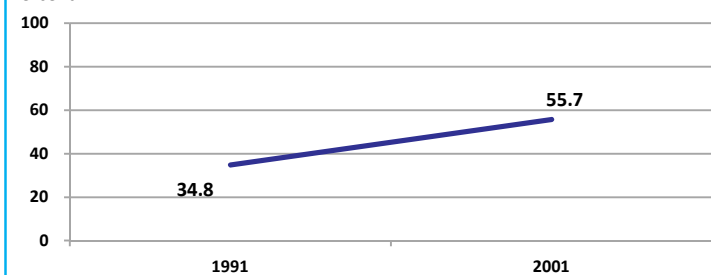
Source: Census

| Location/Sex/Caste | Total | Male | Female | Rural | Urban | SC | ST | Time Period |
|---|-------|-------|--------|-------|-------|-----|------|-------------|
| Primary gross enrolment ratio ** | 100.7 | 100.8 | 100.6 | - | - | - | - | (2008-2009) |
| Upper primary gross enrolment ratio ** | 96.7 | 97.0 | 96.3 | - | - | - | - | (2008-2009) |
| Elementary gross enrolment ratio ** | 99.6 | 99.7 | 99.5 | - | - | - | - | (2008-2009) |
| Primary dropout rate (%) ** | - | 10.9 | 14.3 | - | - | - | - | (2008-2009) |
| Ratio of literate women to men (15-24 years) * | 0.5 | - | - | 0.5 | 0.7 | 0.4 | 0.4 | (2001) |
| Persons age 15+ completed primary education (%) * | 38.7 | 53.1 | 22.5 | 34.0 | 59.8 | 6.3 | 11.3 | (2001) |

Source: Census */Rajya Shiksha Kendra **

Literacy rate 7+

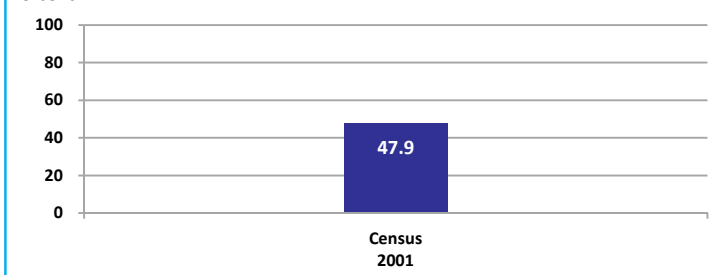
Percent



Source: Census

Literacy rate 15+

Percent

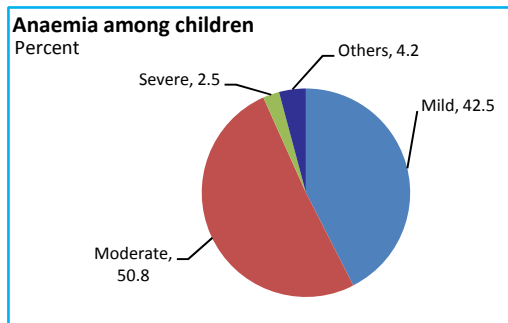


Tikamgarh

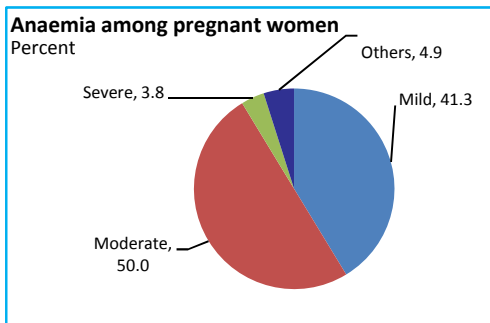
HEALTH & NUTRITION

| | | | | | |
|--|------|---|-----|--|------|
| Contraceptive prevalence rate (15-44 yr) | 46.6 | Fully immunized children (12-23 months) | 7.0 | Prevalence of underweight (moderate and severe, <6 yr) | 54.7 |
|--|------|---|-----|--|------|

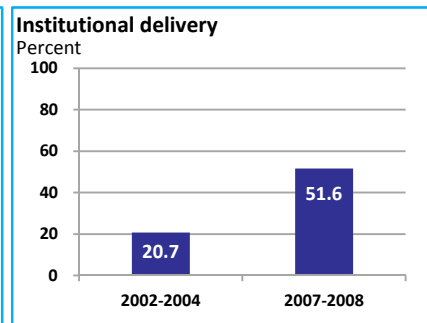
Source: DLHS, 2002-2004



Source: DLHS, 2002-2004

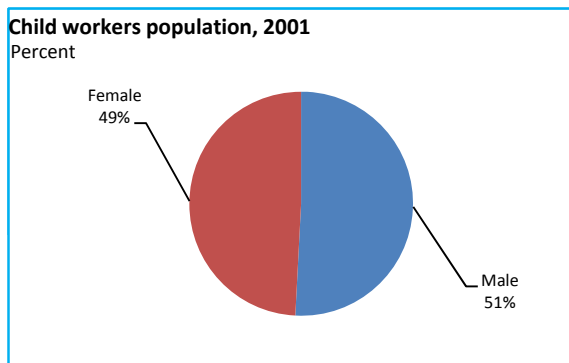


Source: DLHS, 2002-2004

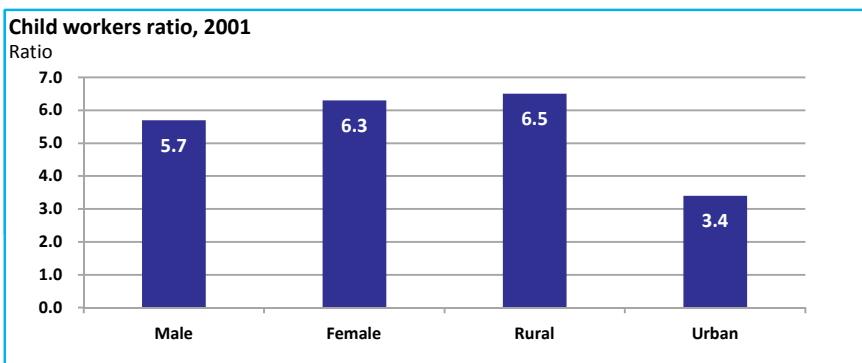


Source: DLHS

CHILD PROTECTION



Source: Census



ENVIRONMENT

| Location/Caste | Total | Rural | Urban | SC | ST | Time Period |
|---|--------|--------|-------|-------|-------|-------------|
| Households living in dilapidated houses (#) | 5249 | 4465 | 784 | 1294 | 1330 | (2001) |
| Households without electricity (#) | 108443 | 100035 | 8408 | 26850 | 7722 | (2001) |
| Households without latrines (#) | 190269 | 170895 | 19374 | 51733 | 11505 | (2001) |

Source: Census

Habitation with drinking water access

| <40 LPCD | 40 to 55 LPCD | With 0 population coverage | With 100% population coverage | With population coverage > 0 and < 100% | Time Period |
|----------|---------------|----------------------------|-------------------------------|---|-------------|
| 0 | 340 | - | 1379 | - | (2009) |

Source: IMIS

INFRASTRUCTURE

| | | | | | |
|---|------|--------|---|------|--------|
| Proportion of villages having any health facility PHC/SHC/AYUSH (%) | 29.0 | (2001) | Proportion of villages having at least a primary school (%) | 83.9 | (2001) |
|---|------|--------|---|------|--------|

Source: Census

