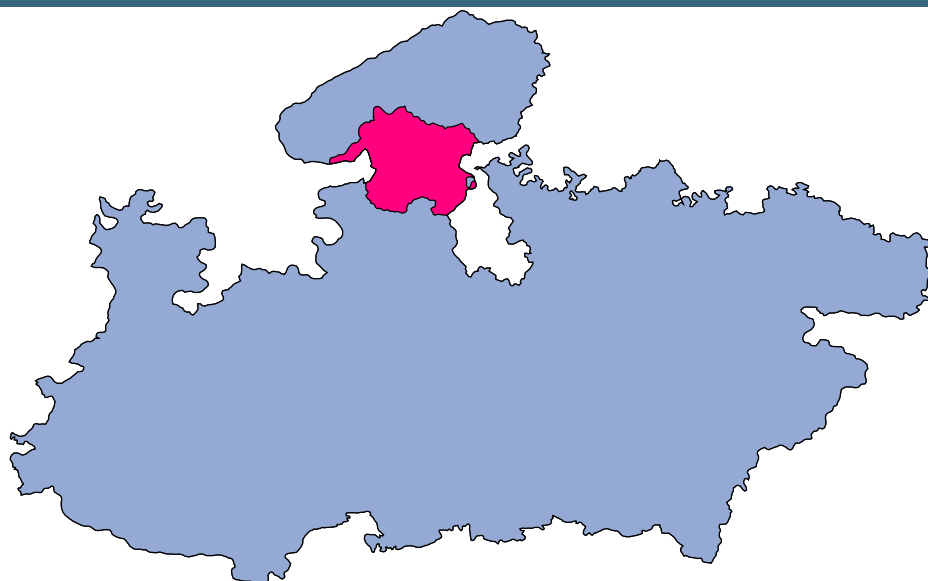




# Shivpuri



## MONITORING XI PLAN GOALS



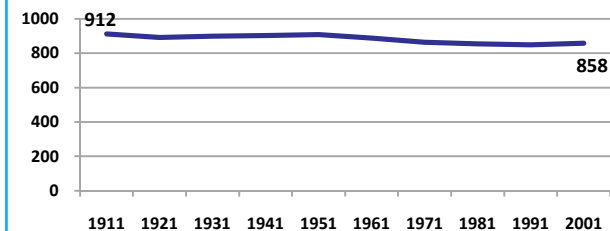
# Shivpuri

## DEMOGRAPHICS

Location/Caste	Total	Rural	Urban	SC	ST	Non SC/ST	Time Period
Population size (000)	1442	-	-	-	-	-	(2001)
Average annual population growth rate (%)	2.4	2.2	3.3	-	-	-	(2001)
Decadal growth rate (%)	27.3	-	-	-	-	-	(2001)
Population density (Persons per Sq Km)	140	-	-	-	-	-	(2001)
Sex ratio (Females per 1000 males)	858	855	874	854	945	846	(2001)
Sex ratio (0-6 years, Females per 1000 males)	906	907	901	927	929	883	(2001)
Level of urbanization (%)	16.6	-	-	-	-	-	(2001)

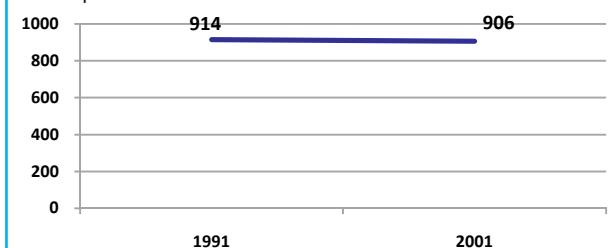
### Sex ratio

Females per 1000 males



### Sex ratio, 0-6 years

Females per 1000 males



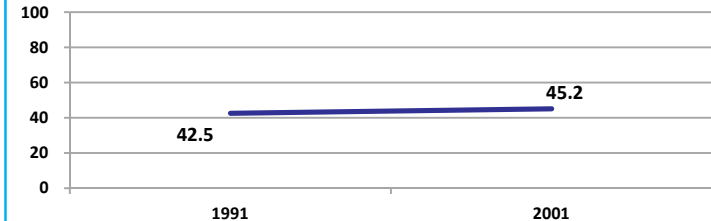
Source: Census

Source: Census

## ECONOMY

### Work participation rate

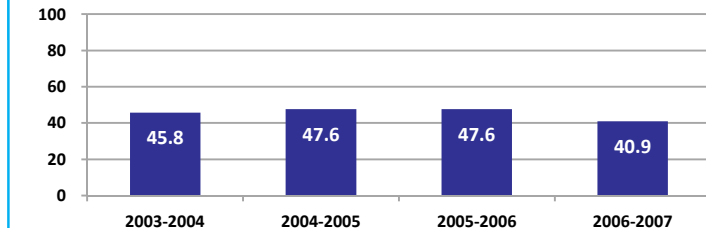
Percent



Source: Census

### Net sown area irrigated

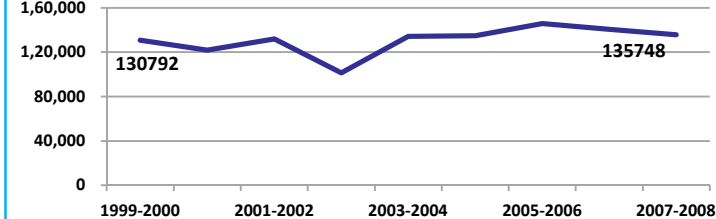
Percent



Source: Census, 2001 Projected

### Net District Domestic Product at constant (1990-2000) prices

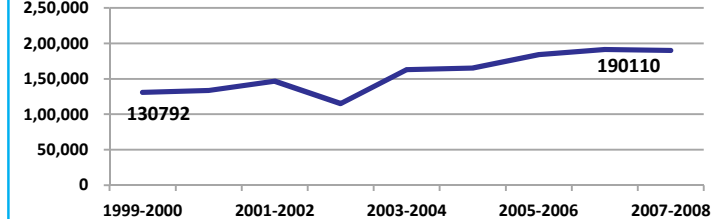
Lakhs



Source: DES, 2009

### Net District Domestic Product at current prices

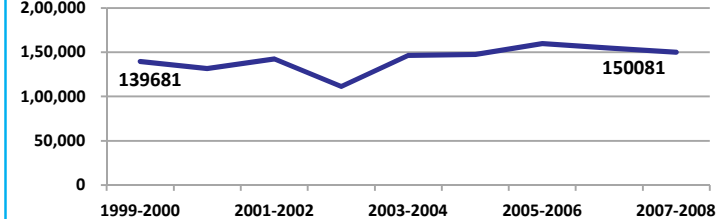
Lakhs



Source: DES, 2009

### Gross District Domestic Product at constant (1990-2000) prices

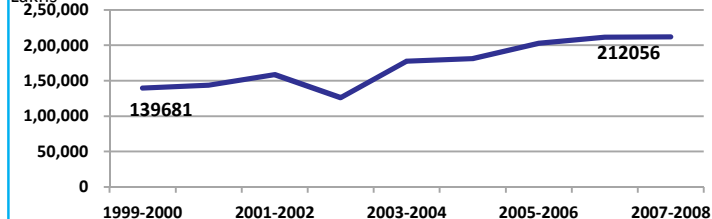
Lakhs



Source: DES, 2009

### Gross District Domestic Product at current prices

Lakhs



Source: DES, 2009



## Shivpuri

### ECONOMY

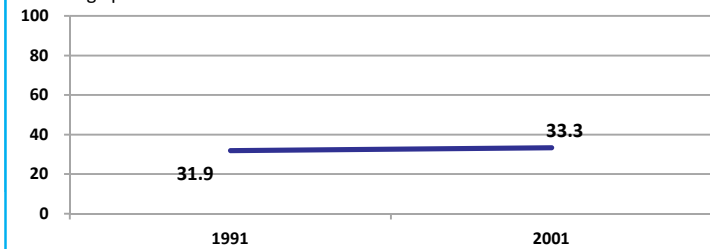
Location/Caste	Total	Rural	Urban	SC	ST	Non SC/ST	Time Period
Industrial working population (%)	789680	-	-	-	-	-	(2001)
Marginal working population (%)	10.1	-	-	-	-	-	(2001)
Main working population (%)	35.2	-	-	-	-	-	(2001)
Farmers and agricultural labour in population (%)	37.3	-	-	-	-	-	(2001)
Schedule caste population (%)	18.8	19.5	15.4	-	-	-	(2001)
Schedule tribe population (%)	11.2	12.9	2.8	-	-	-	(2001)
Households having none of the six household assets (Radio/Transistor, Television, Telephone, Bicycle, Two wheeler, Four wheeler) (#)	112516	104839	7677	26095	24765	-	(2001)

Source: Census

### EDUCATION

#### Gender gap in literacy rate (Male-Female)

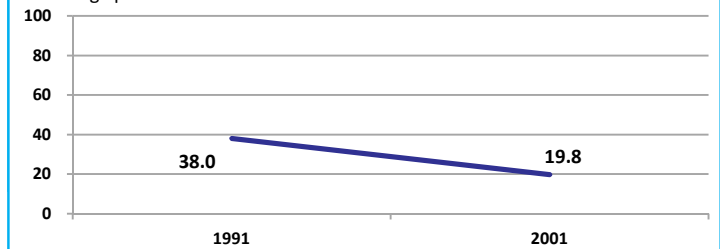
Percentage points



Source: Census

#### Gap in literacy rate by residence (Urban-Rural)

Percentage points



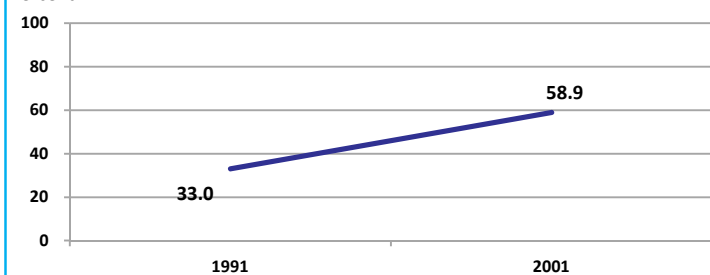
Source: Census

Location/Sex/Caste	Total	Male	Female	Rural	Urban	SC	ST	Time Period
Primary gross enrolment ratio **	104.7	104.0	105.5	-	-	-	-	(2008-2009)
Upper primary gross enrolment ratio **	100.6	104.1	95.9	-	-	-	-	(2008-2009)
Elementary gross enrolment ratio **	103.5	104.1	102.9	-	-	-	-	(2008-2009)
Primary dropout rate (%) **	-	5.9	6.8	-	-	-	-	(2008-2009)
Ratio of literate women to men (15-24 years) *	0.4	-	-	0.4	0.7	0.4	0.3	(2001)
Persons age 15+ completed primary education (%) *	34.3	48.5	17.6	27.7	64.8	6.0	12.2	(2001)

Source: Census \*/Rajya Shiksha Kendra \*\*

#### Literacy rate 7+

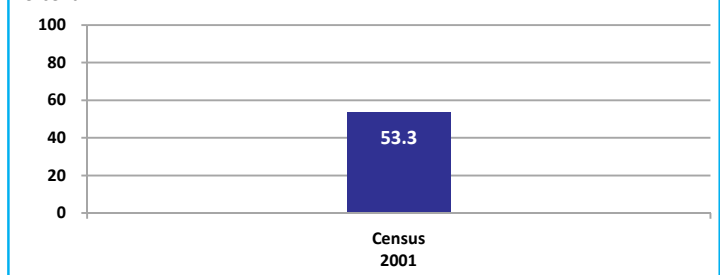
Percent



Source: Census

#### Literacy rate 15+

Percent

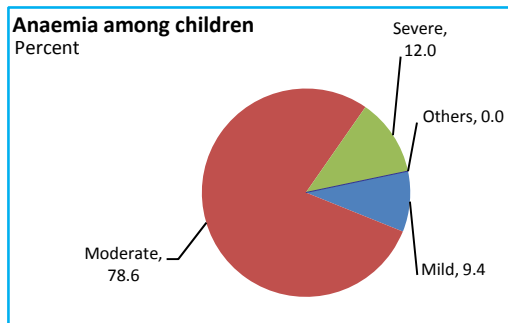


## Shivpuri

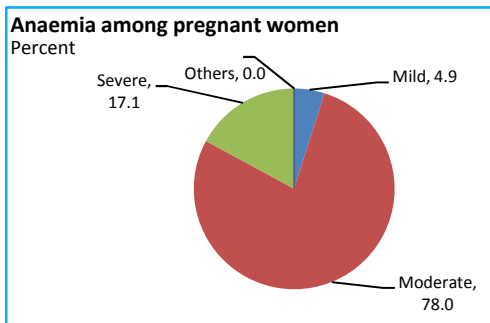
### HEALTH & NUTRITION

Contraceptive prevalence rate (15-44 yr)	48.0	Fully immunized children (12-23 months)	16.7	Prevalence of underweight (moderate and severe, <6 yr)	65.2
--	------	---	------	--	------

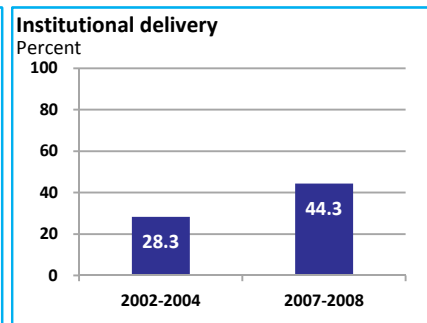
Source: DLHS, 2002-2004



Source: DLHS, 2002-2004

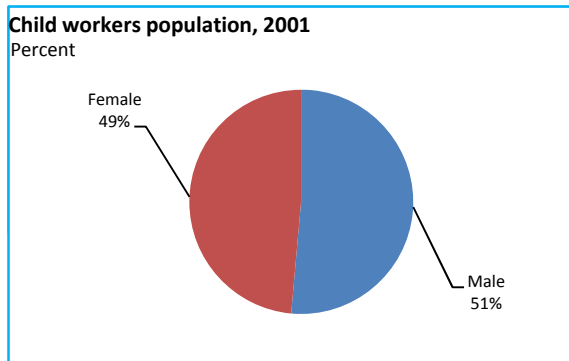


Source: DLHS, 2002-2004

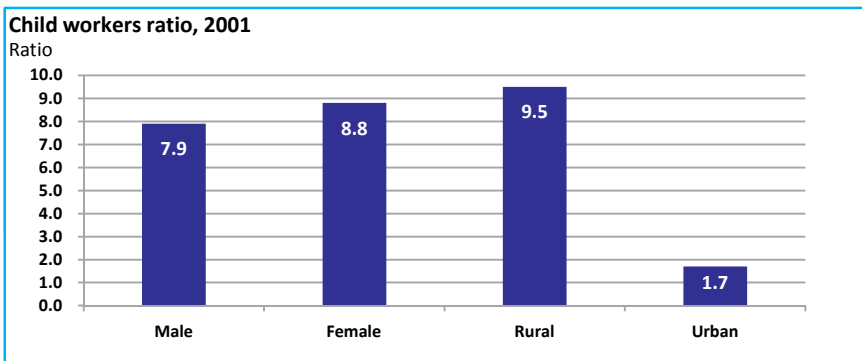


Source: DLHS

### CHILD PROTECTION



Source: Census



### ENVIRONMENT

Location/Caste	Total	Rural	Urban	SC	ST	Time Period
Households living in dilapidated houses (#)	10211	9257	954	1758	5330	(2001)
Households without electricity (#)	95509	92164	3345	19133	18321	(2001)
Households without latrines (#)	206266	191508	14758	45031	32118	(2001)

Source: Census

**Habitation with drinking water access**

<40 LPCD	40 to 55 LPCD	With 0 population coverage	With 100% population coverage	With population coverage > 0 and < 100%	Time Period
0	280	-	1349	-	(2009)

Source: IMIS

### INFRASTRUCTURE

Proportion of villages having any health facility PHC/SHC/AYUSH (%)	25.6	(2001)	Proportion of villages having at least a primary school (%)	79.8	(2001)
---	------	--------	---	------	--------

Source: Census

