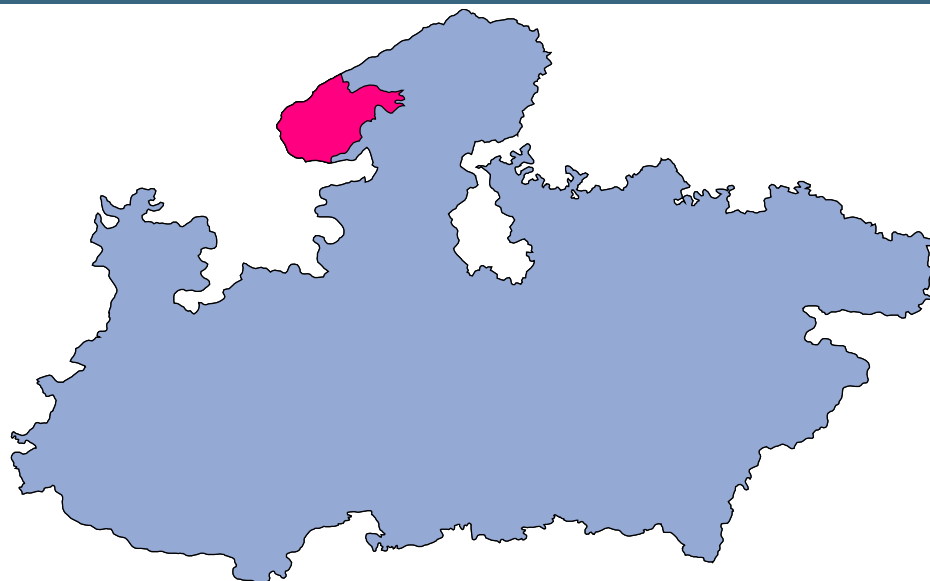




Sheopur



MONITORING XI PLAN GOALS



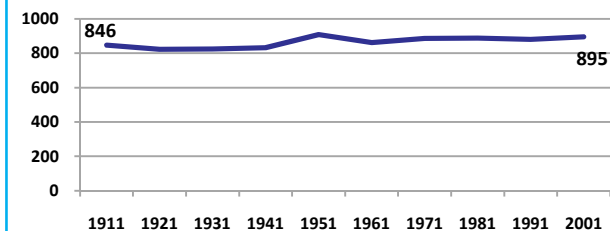
Sheopur

DEMOGRAPHICS

Location/Caste	Total	Rural	Urban	SC	ST	Non SC/ST	Time Period
Population size (000)	559	-	-	-	-	-	(2001)
Average annual population growth rate (%)	2.6	2.4	3.5	-	-	-	(2001)
Decadal growth rate (%)	29.7	-	-	-	-	-	(2001)
Population density (Persons per Sq Km)	85	-	-	-	-	-	(2001)
Sex ratio (Females per 1000 males)	895	898	877	869	945	883	(2001)
Sex ratio (0-6 years, Females per 1000 males)	929	938	880	958	928	893	(2001)
Level of urbanization (%)	15.8	-	-	-	-	-	(2001)

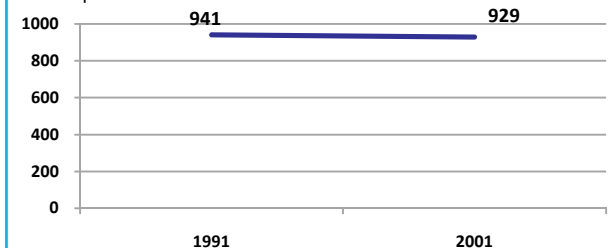
Sex ratio

Females per 1000 males



Sex ratio, 0-6 years

Females per 1000 males



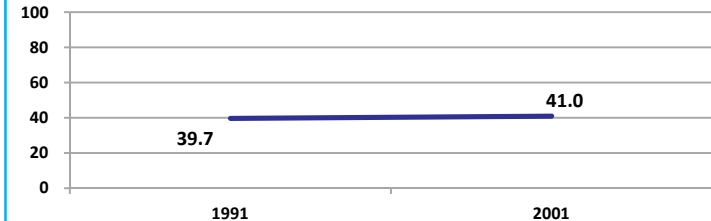
Source: Census

Source: Census

ECONOMY

Work participation rate

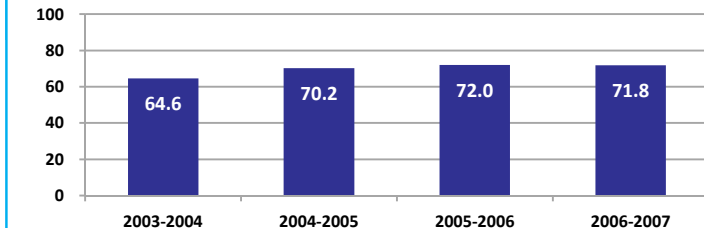
Percent



Source: Census

Net sown area irrigated

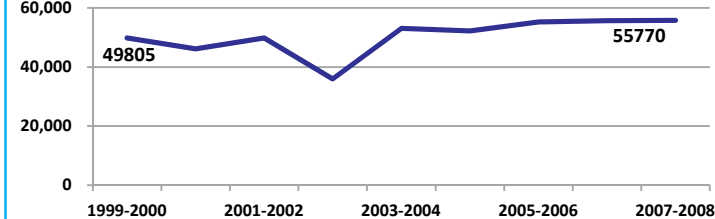
Percent



Source: Census, 2001 Projected

Net District Domestic Product at constant (1990-2000) prices

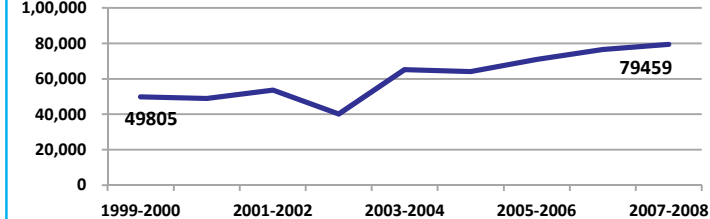
Lakhs



Source: DES, 2009

Net District Domestic Product at current prices

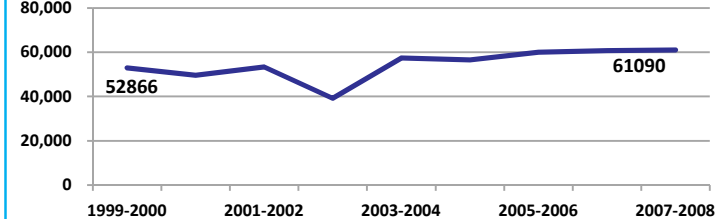
Lakhs



Source: DES, 2009

Gross District Domestic Product at constant (1990-2000) prices

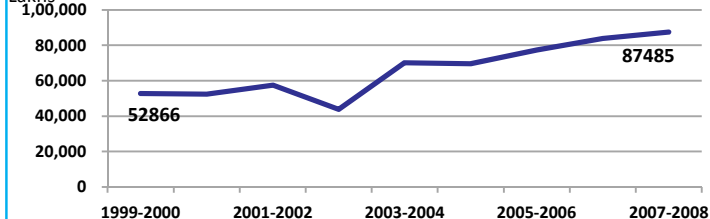
Lakhs



Source: DES, 2009

Gross District Domestic Product at current prices

Lakhs



Source: DES, 2009



Sheopur

ECONOMY

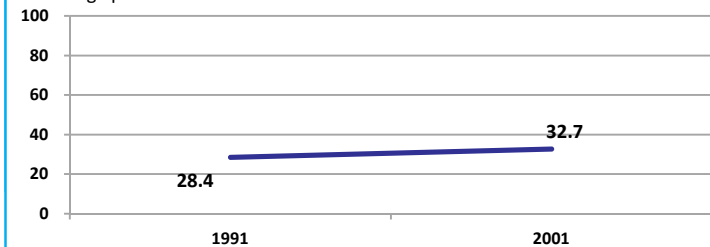
Location/Caste	Total	Rural	Urban	SC	ST	Non SC/ST	Time Period
Industrial working population (%)	-	-	-	-	-	-	-
Marginal working population (%)	13.7	-	-	-	-	-	(2001)
Main working population (%)	27.3	-	-	-	-	-	(2001)
Farmers and agricultural labour in population (%)	33.2	-	-	-	-	-	(2001)
Schedule caste population (%)	16.2	16.4	14.9	-	-	-	(2001)
Schedule tribe population (%)	21.5	24.5	5.6	-	-	-	(2001)
Households having none of the six household assets (Radio/Transistor, Television, Telephone, Bicycle, Two wheeler, Four wheeler) (#)	58359	53995	4364	11606	16491	-	(2001)

Source: Census

EDUCATION

Gender gap in literacy rate (Male-Female)

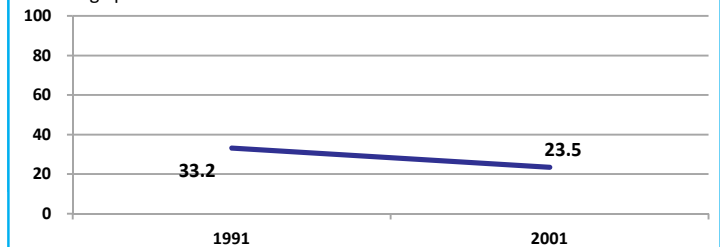
Percentage points



Source: Census

Gap in literacy rate by residence (Urban-Rural)

Percentage points



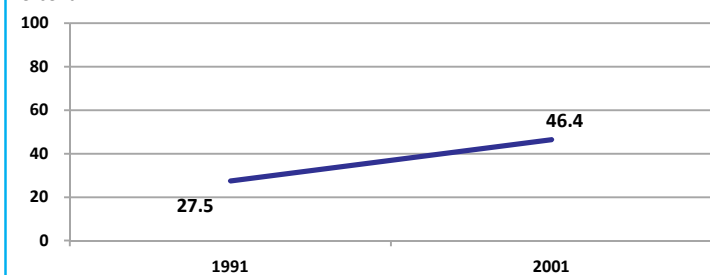
Source: Census

Location/Sex/Caste	Total	Male	Female	Rural	Urban	SC	ST	Time Period
Primary gross enrolment ratio **	110.4	109.4	111.5	-	-	-	-	(2008-2009)
Upper primary gross enrolment ratio **	99.2	100.7	97.1	-	-	-	-	(2008-2009)
Elementary gross enrolment ratio **	107.4	106.9	107.9	-	-	-	-	(2008-2009)
Primary dropout rate (%) **	-	15.0	16.1	-	-	-	-	(2008-2009)
Ratio of literate women to men (15-24 years) *	0.4	-	-	0.3	0.6	0.3	0.2	(2001)
Persons age 15+ completed primary education (%) *	29.1	43.0	13.5	23.9	54.9	7.1	22.3	(2001)

Source: Census */Rajya Shiksha Kendra **

Literacy rate 7+

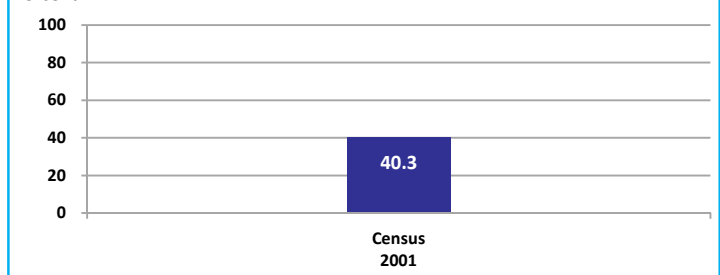
Percent



Source: Census

Literacy rate 15+

Percent

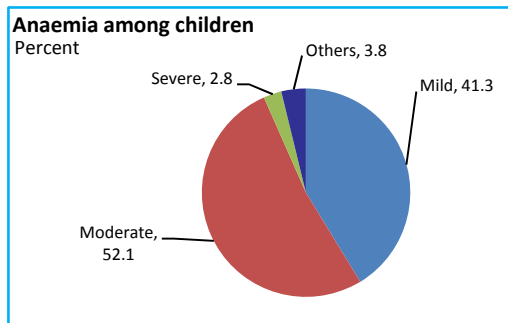


Sheopur

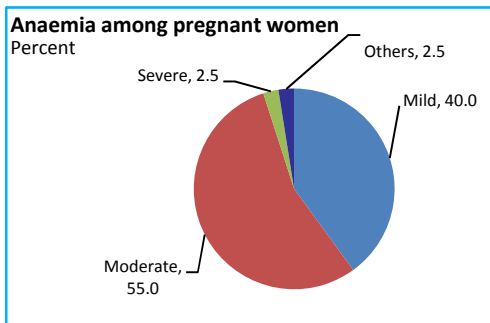
HEALTH & NUTRITION

Contraceptive prevalence rate (15-44 yr)	44.3	Fully immunized children (12-23 months)	34.5	Prevalence of underweight (moderate and severe, <6 yr)	54.9
--	------	---	------	--	------

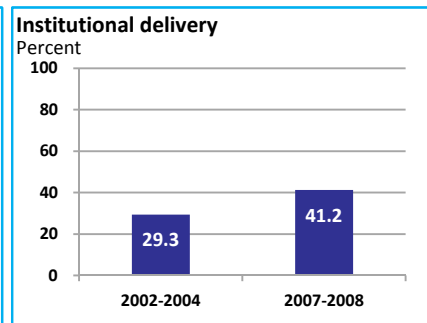
Source: DLHS, 2002-2004



Source: DLHS, 2002-2004

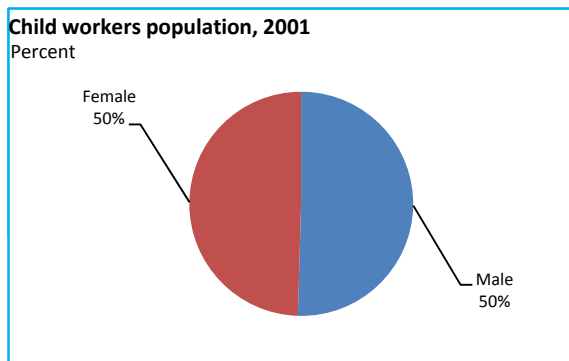


Source: DLHS, 2002-2004

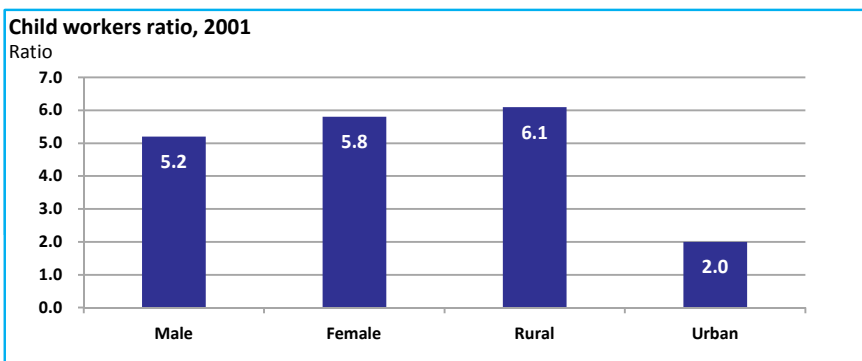


Source: DLHS

CHILD PROTECTION



Source: Census



ENVIRONMENT

Location/Caste	Total	Rural	Urban	SC	ST	Time Period
Households living in dilapidated houses (#)	4505	3770	735	664	2243	(2001)
Households without electricity (#)	34695	33409	1286	4752	14767	(2001)
Households without latrines (#)	86943	79163	7780	16386	22287	(2001)

Source: Census

Habitation with drinking water access

<40 LPCD	40 to 55 LPCD	With 0 population coverage	With 100% population coverage	With population coverage > 0 and < 100%	Time Period
0	105	-	445	-	(2009)

Source: IMIS

INFRASTRUCTURE

Proportion of villages having any health facility PHC/SHC/AYUSH (%)	26.2	(2001)	Proportion of villages having at least a primary school (%)	72.2	(2001)
---	------	--------	---	------	--------

Source: Census

