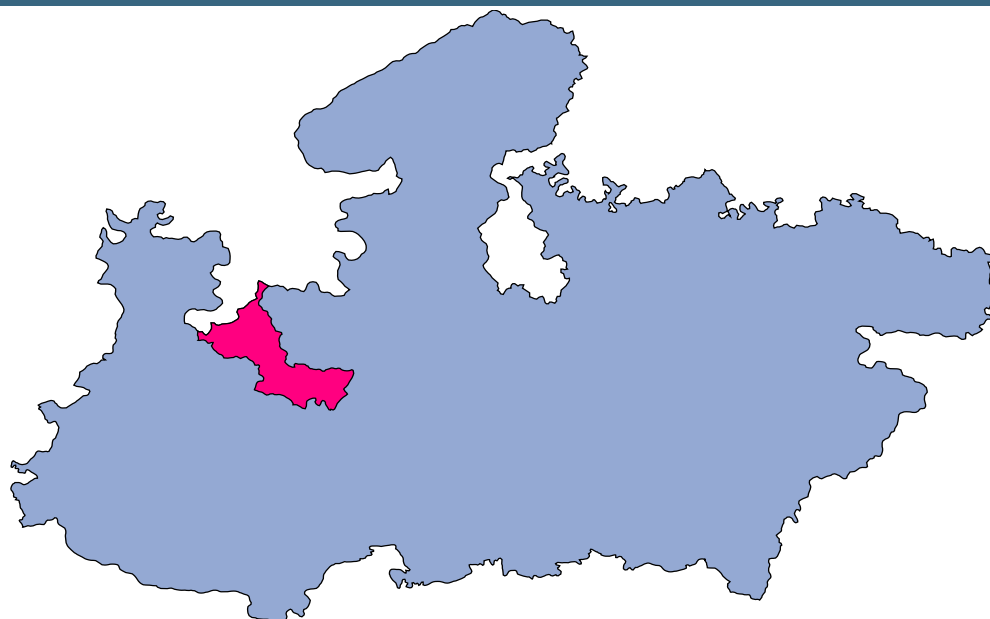




Shajapur



MONITORING XI PLAN GOALS



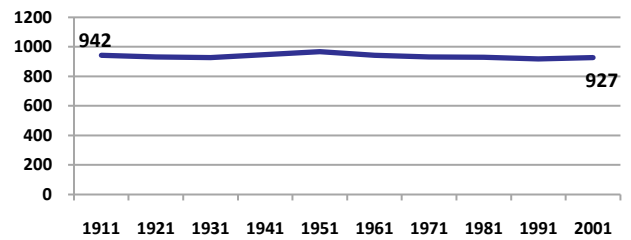
Shajapur

DEMOGRAPHICS

Location/Caste	Total	Rural	Urban	SC	ST	Non SC/ST	Time Period
Population size (000)	1291	-	-	-	-	-	(2001)
Average annual population growth rate (%)	2.2	2.1	2.7	-	-	-	(2001)
Decadal growth rate (%)	24.9	-	-	-	-	-	(2001)
Population density (Persons per Sq Km)	208	-	-	-	-	-	(2001)
Sex ratio (Females per 1000 males)	927	928	920	923	918	929	(2001)
Sex ratio (0-6 years, Females per 1000 males)	936	937	926	952	948	846	(2001)
Level of urbanization (%)	18.5	-	-	-	-	-	(2001)

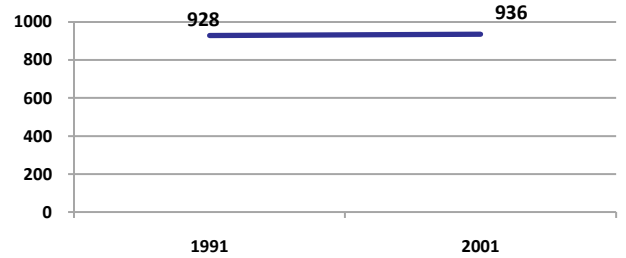
Sex ratio

Females per 1000 males



Sex ratio, 0-6 years

Females per 1000 males



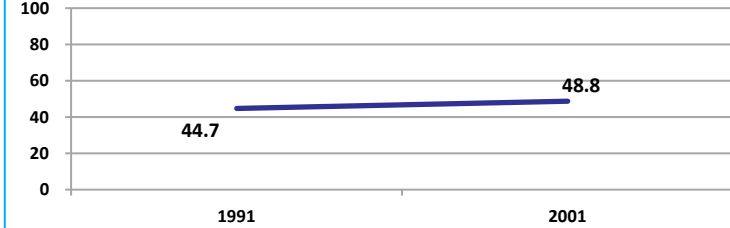
Source: Census

Source: Census

ECONOMY

Work participation rate

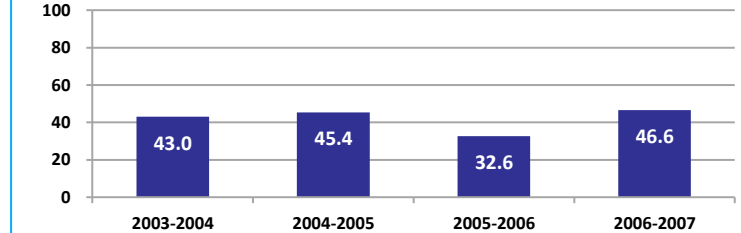
Percent



Source: Census

Net sown area irrigated

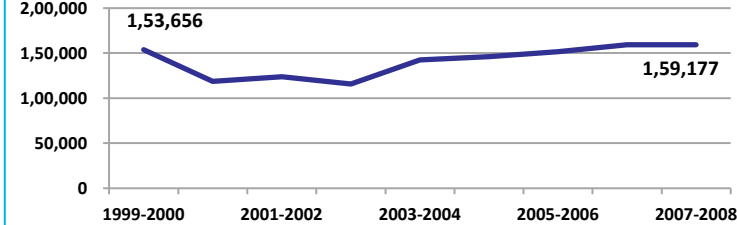
Percent



Source: Census, 2001 Projected

Net district domestic product at constant (1990-2000) prices

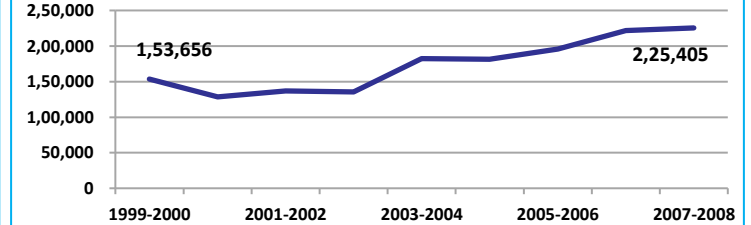
Lakhs



Source: DES, 2009

Net district domestic product at current prices

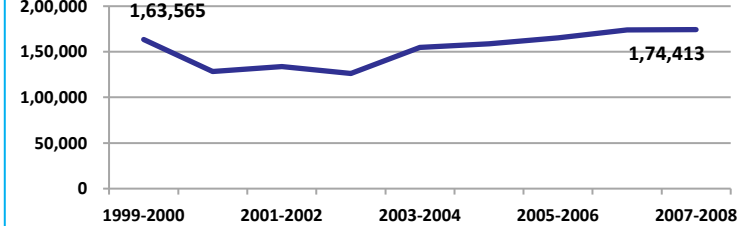
Lakhs



Source: DES, 2009

Gross district domestic Product at constant (1990-2000) prices

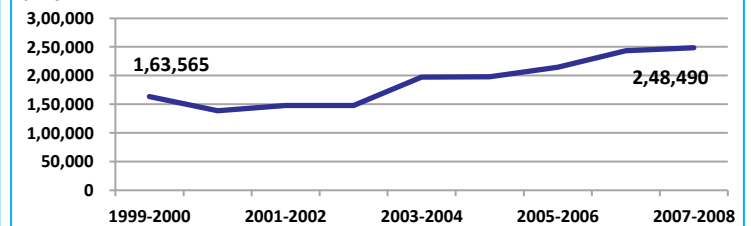
Lakhs



Source: DES, 2009

Gross district domestic product at current prices

Lakhs



Source: DES, 2009



State Planning Commission



Shajapur

ECONOMY

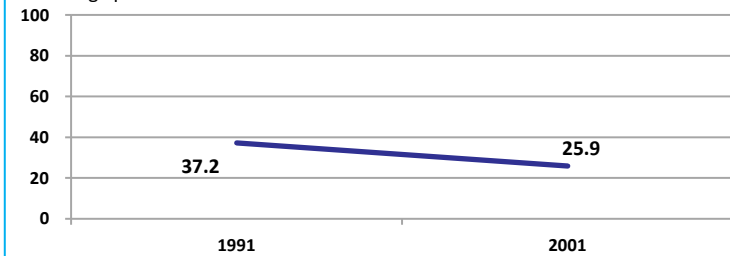
Location/Caste	Total	Rural	Urban	SC	ST	Non SC/ST	Time Period
Industrial working population (%)	660894	-	-	-	-	-	(2001)
Marginal working population (%)	15.0	-	-	-	-	-	(2001)
Main working population (%)	33.8	-	-	-	-	-	(2001)
Farmers and agricultural labour in population (%)	39.6	-	-	-	-	-	(2001)
Schedule caste population (%)	22.0	24.4	11.3	-	-	-	(2001)
Schedule tribe population (%)	2.7	3.0	1.6	-	-	-	(2001)
Households having none of the six household assets (Radio/Transistor, Television, Telephone, Bicycle, Two wheeler, Four wheeler) (#)	88286	79283	9003	29857	3185	-	(2001)

Source: Census

EDUCATION

Gender gap in literacy rate (Male-Female)

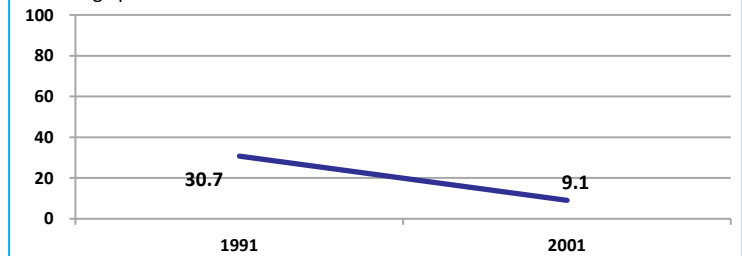
Percentage points



Source: Census

Gap in literacy rate by residence (Urban-Rural)

Percentage points



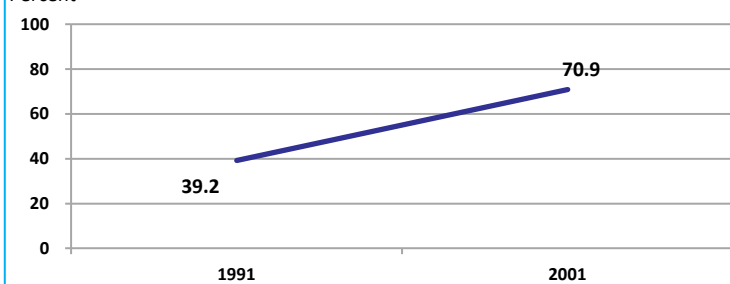
Source: Census

Location/Sex/Caste	Total	Male	Female	Rural	Urban	SC	ST	Time Period
Primary gross enrolment ratio **	108.0	108.4	107.6	-	-	-	-	(2008-2009)
Upper primary gross enrolment ratio **	109.8	110.0	109.6	-	-	-	-	(2008-2009)
Elementary gross enrolment ratio **	108.5	108.8	108.1	-	-	-	-	(2008-2009)
Primary dropout rate (%) **	-	10.9	14.2	-	-	-	-	(2008-2009)
Ratio of literate women to men (15-24 years) *	0.7	-	-	0.7	0.7	0.6	0.6	(2001)
Persons age 15+ completed primary education (%) *	37.6	54.1	20.0	32.1	60.9	8.0	10.3	(2001)

Source: Census */Rajya Shiksha Kendra **

Literacy rate 7+

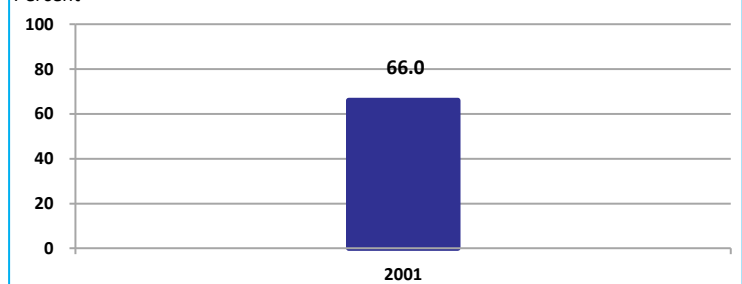
Percent



Source: Census

Literacy rate 15+

Percent



Source: Census

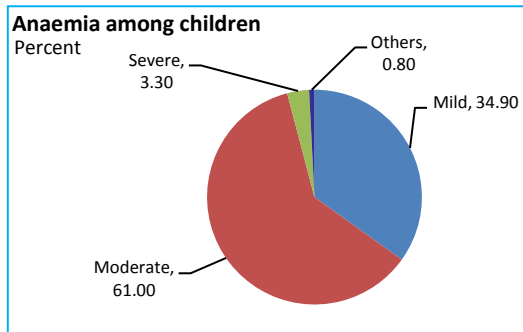


Shajapur

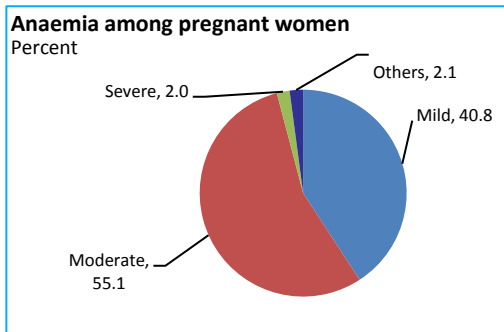
HEALTH & NUTRITION

Contraceptive prevalence rate (15-44 yr)	56.1	Fully immunized children (12-23 months)	33.2	Prevalence of underweight (moderate and severe, <6 yr)	62.5
--	------	---	------	--	------

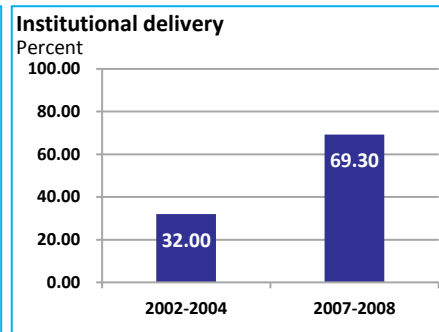
Source: DLHS, 2002-2004



Source: DLHS, 2002-2004

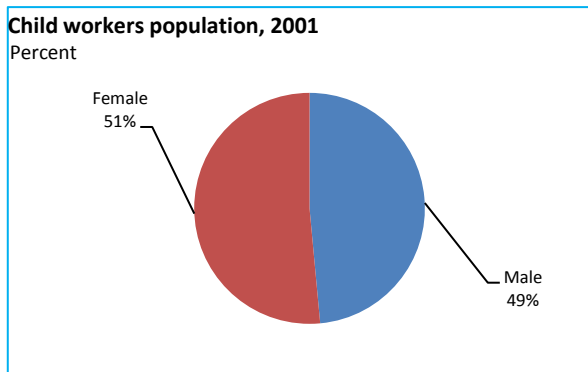


Source: DLHS, 2002-2004

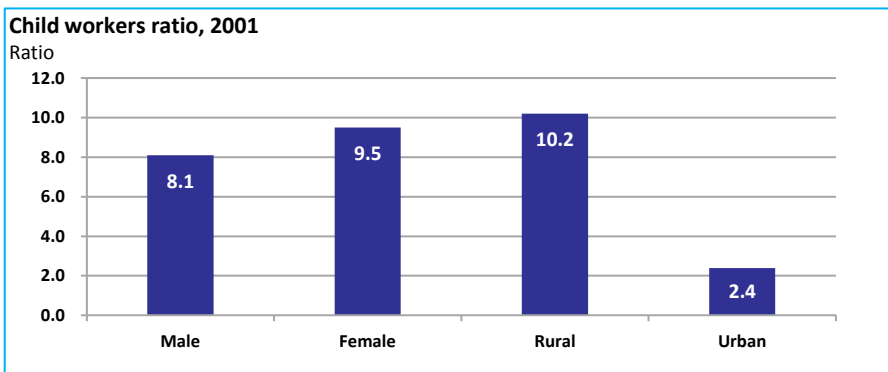


Source: DLHS

CHILD PROTECTION



Source: Census



ENVIRONMENT

Location/Caste	Total	Rural	Urban	SC	ST	Time Period
Households living in dilapidated houses (#)	5247	4396	851	2213	303	(2001)
Households without electricity (#)	21226	19155	2071	5842	509	(2001)
Households without latrines (#)	178955	163091	15864	51491	5611	(2001)

Source: Census

Habitation with drinking water access

<40 LPCD	40 to 55 LPCD	With 0 population coverage	With 100% population coverage	With population coverage > 0 and < 100%	Time Period
0	390	-	28	-	(2009)

Source: IMIS

INFRASTRUCTURE

Proportion of villages having any health facility PHC/SHC/AYUSH (%)	18.7	(2001)	Proportion of villages having at least a primary school (%)	88.9	(2001)
---	------	--------	---	------	--------

Source: Census

