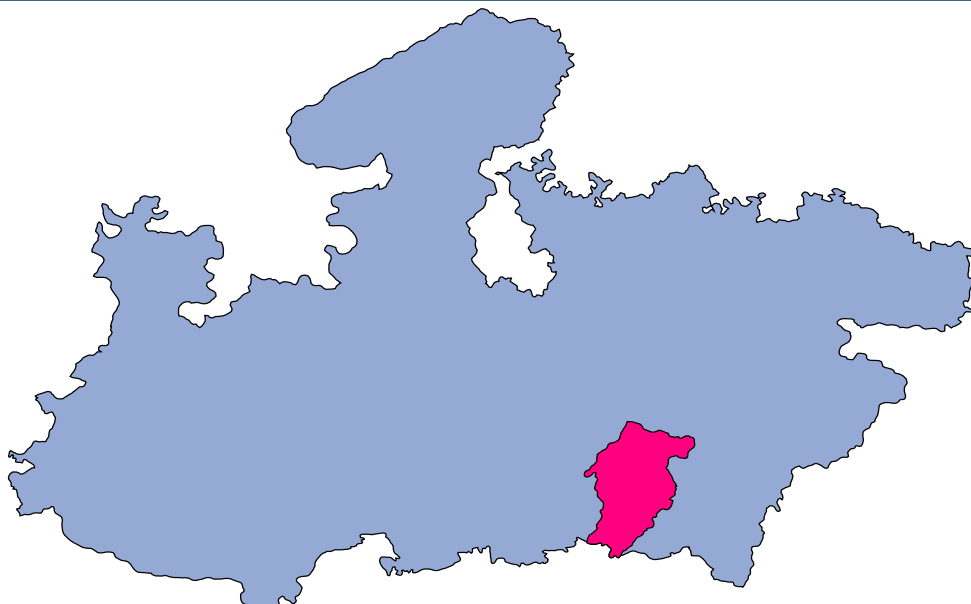




# Seoni



## MONITORING XI PLAN GOALS



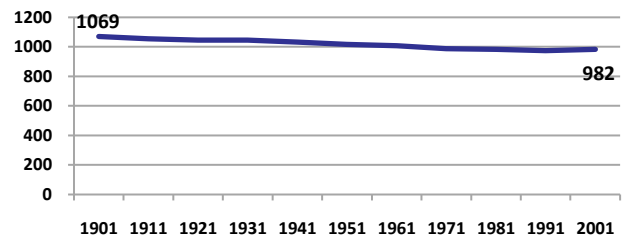
## Seoni

### DEMOGRAPHICS

Location/Caste	Total	Rural	Urban	SC	ST	Non SC/ST	Time Period
Population size (000)	1167	-	-	-	-	-	(2001)
Average annual population growth rate (%)	1.5	1.4	2.4	-	-	-	(2001)
Decadal growth rate (%)	16.6	-	-	-	-	-	(2001)
Population density (Persons per Sq Km)	133	-	-	-	-	-	(2001)
Sex ratio (Females per 1000 males)	982	987	933	956	1016	965	(2001)
Sex ratio (0-6 years, Females per 1000 males)	977	985	895	936	928	883	(2001)
Level of urbanization (%)	10.3	-	-	-	-	-	(2001)

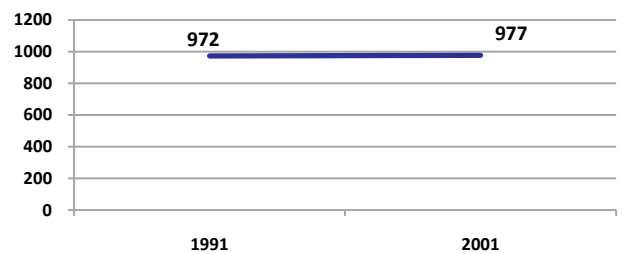
#### Sex ratio

Females per 1000 males



#### Sex ratio, 0-6 years

Females per 1000 males



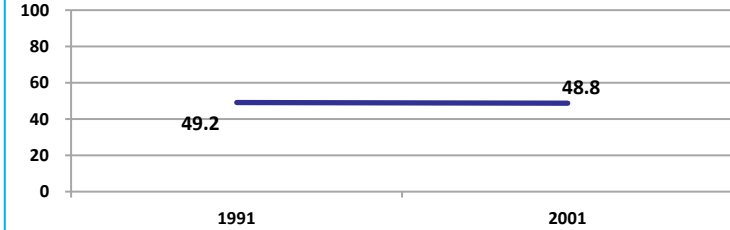
Source: Census

Source: Census

### ECONOMY

#### Work participation rate

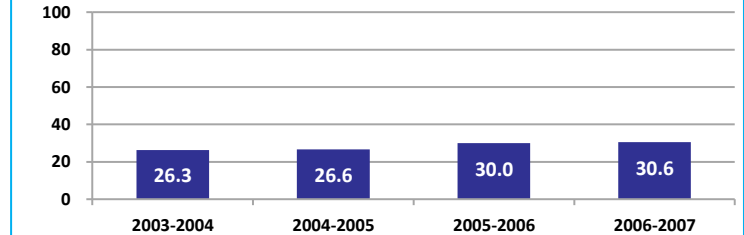
Percent



Source: Census

#### Net sown area irrigated

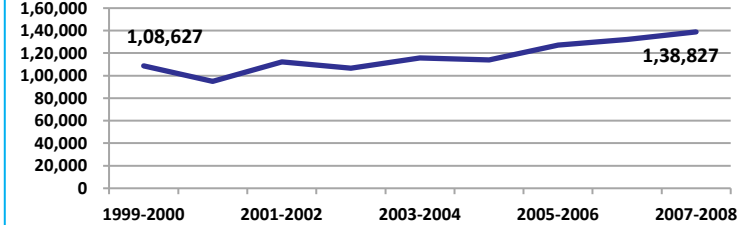
Percent



Source: Census, 2001 Projected

#### Net district domestic product at constant (1990-2000) prices

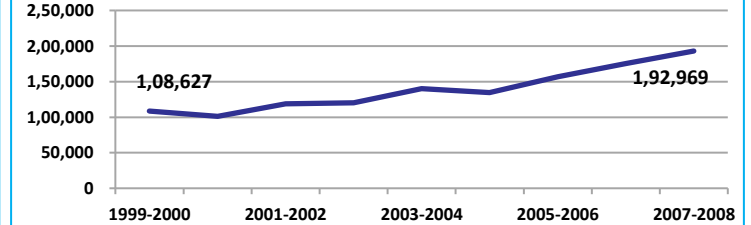
Lakhs



Source: DES, 2009

#### Net district domestic product at current prices

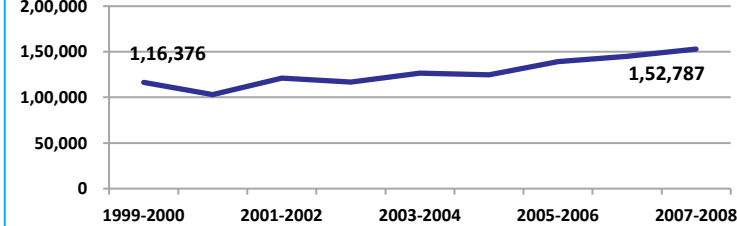
Lakhs



Source: DES, 2009

#### Gross district domestic Product at constant (1990-2000) prices

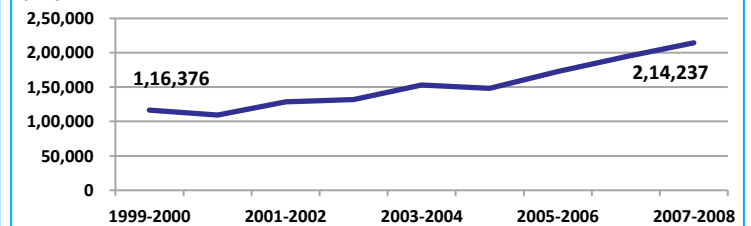
Lakhs



Source: DES, 2009

#### Gross district domestic product at current prices

Lakhs



Source: DES, 2009



State Planning Commission



## Seoni

### ECONOMY

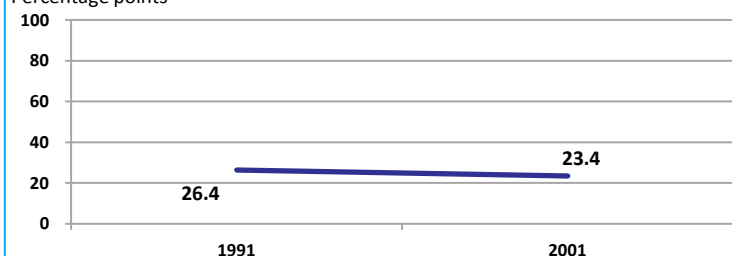
Location/Caste	Total	Rural	Urban	SC	ST	Non SC/ST	Time Period
Industrial working population (%)	597548	-	-	-	-	-	(2001)
Marginal working population (%)	16.1	-	-	-	-	-	(2001)
Main working population (%)	32.7	-	-	-	-	-	(2001)
Farmers and agricultural labour in population (%)	40.5	-	-	-	-	-	(2001)
Schedule caste population (%)	10.3	10.2	11.3	-	-	-	(2001)
Schedule tribe population (%)	36.8	40.1	7.7	-	-	-	(2001)
Households having none of the six household assets (Radio/Transistor, Television, Telephone, Bicycle, Two wheeler, Four wheeler) (#)	116816	111028	5788	12999	56660	-	(2001)

Source: Census

### EDUCATION

#### Gender gap in literacy rate (Male-Female)

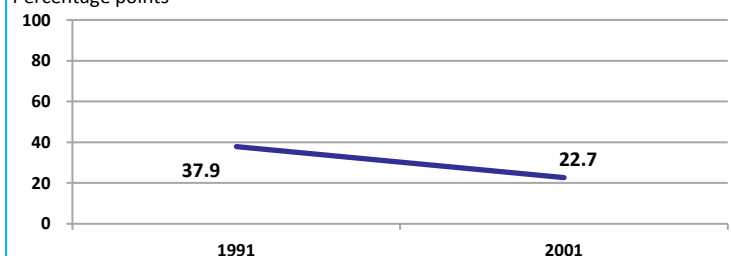
Percentage points



Source: Census

#### Gap in literacy rate by residence (Urban-Rural)

Percentage points



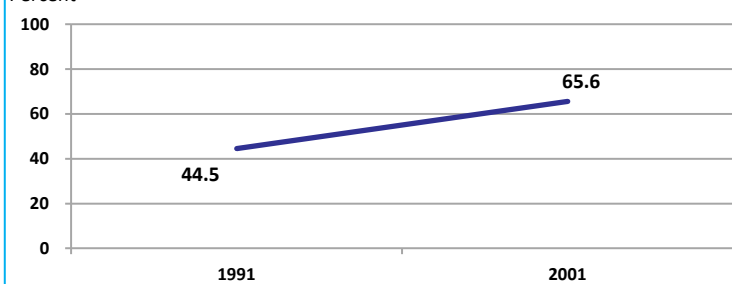
Source: Census

Location/Sex/Caste	Total	Male	Female	Rural	Urban	SC	ST	Time Period
Primary gross enrolment ratio **	103.7	104.9	102.4	-	-	-	-	(2008-2009)
Upper primary gross enrolment ratio **	94.2	95.1	93.3	-	-	-	-	(2008-2009)
Elementary gross enrolment ratio **	100.5	101.7	99.4	-	-	-	-	(2008-2009)
Primary dropout rate (%) **	-	13.1	16.9	-	-	-	-	(2008-2009)
Ratio of literate women to men (15-24 years) *	0.8	-	-	0.7	0.9	0.7	0.7	(2001)
Persons age 15+ completed primary education (%) *	41.8	52.7	30.7	37.6	74.3	15.2	13.9	(2001)

Source: Census \*/Rajya Shiksha Kendra \*\*

#### Literacy rate 7+

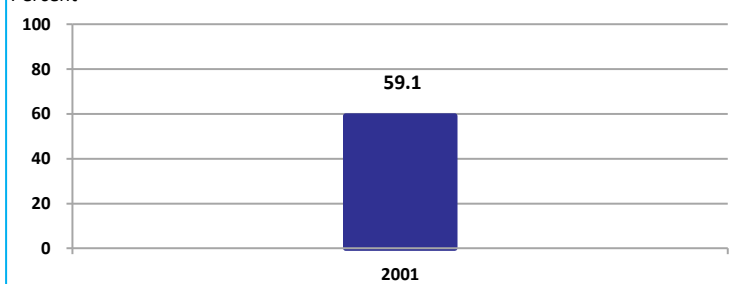
Percent



Source: Census

#### Literacy rate 15+

Percent



Source: Census



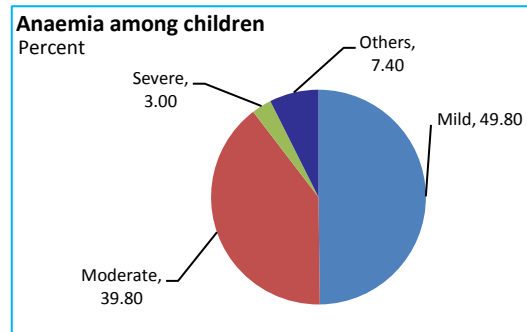


## Seoni

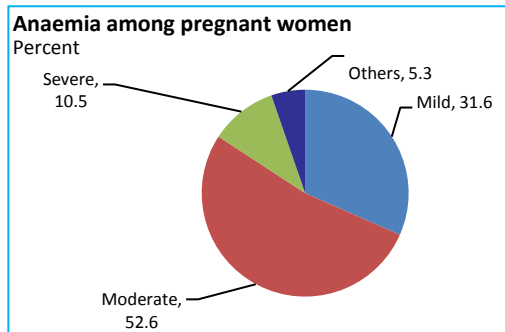
### HEALTH & NUTRITION

Contraceptive prevalence rate (15-44 yr)	56.9	Fully immunized children (12-23 months)	58.7	Prevalence of underweight (moderate and severe, <6 yr)	44.3
--	------	---	------	--	------

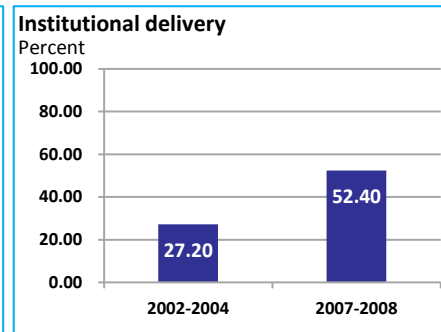
Source: DLHS, 2002-2004



Source: DLHS, 2002-2004

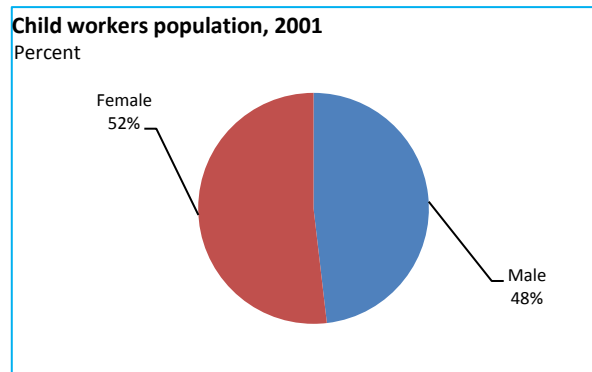


Source: DLHS, 2002-2004

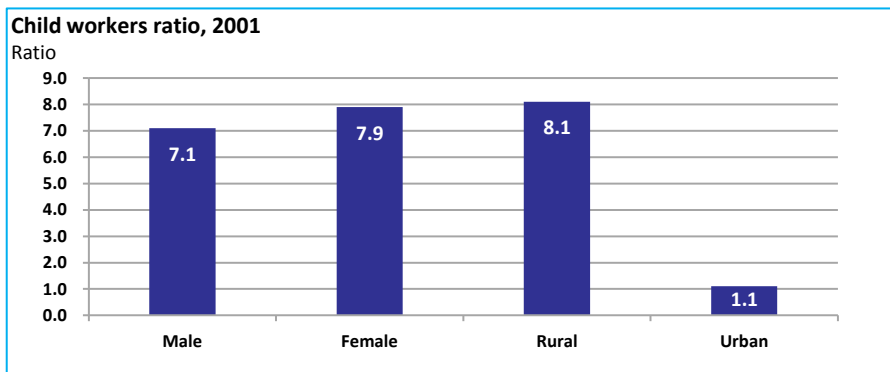


Source: DLHS

### CHILD PROTECTION



Source: Census



### ENVIRONMENT

Location/Caste	Total	Rural	Urban	SC	ST	Time Period
Households living in dilapidated houses (#)	9805	8999	806	1338	3745	(2001)
Households without electricity (#)	78083	75477	2606	6988	33894	(2001)
Households without latrines (#)	200407	192523	7884	23754	82874	(2001)

Source: Census

Habitation with drinking water access					
<40 LPCD	40 to 55 LPCD	With 0 population coverage	With 100% population coverage	With population coverage > 0 and < 100%	Time Period
0	160	-	386	-	(2009)

Source: IMIS

### INFRASTRUCTURE

Proportion of villages having any health facility PHC/SHC/AYUSH (%)	22.5	(2001)	Proportion of villages having at least a primary school (%)	91.4	(2001)
---	------	--------	---	------	--------

Source: Census

