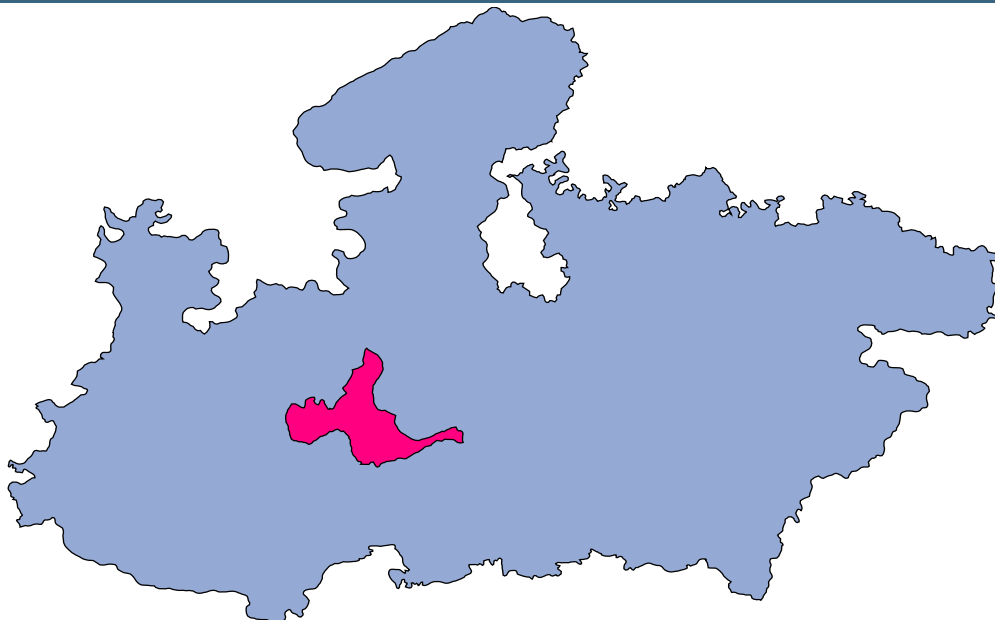




# Sehore



## MONITORING XI PLAN GOALS



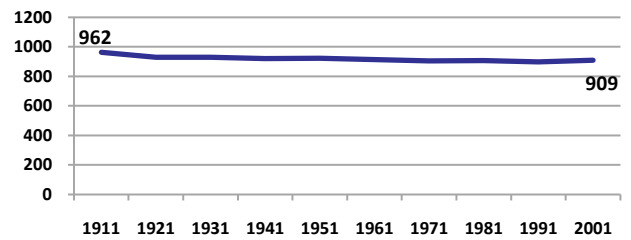
## Sehore

### DEMOGRAPHICS

Location/Caste	Total	Rural	Urban	SC	ST	Non SC/ST	Time Period
Population size (000)	1079	-	-	-	-	-	(2001)
Average annual population growth rate (%)	2.5	2.5	2.5	-	-	-	(2001)
Decadal growth rate (%)	28.2	-	-	-	-	-	(2001)
Population density (Persons per Sq Km)	164	-	-	-	-	-	(2001)
Sex ratio (Females per 1000 males)	909	911	899	910	943	902	(2001)
Sex ratio (0-6 years, Females per 1000 males)	927	928	925	926	949	874	(2001)
Level of urbanization (%)	18.0	-	-	-	-	-	(2001)

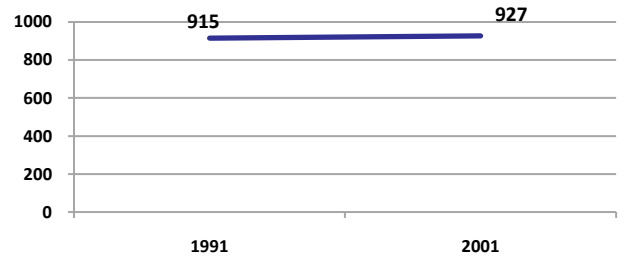
#### Sex ratio

Females per 1000 males



#### Sex ratio, 0-6 years

Females per 1000 males



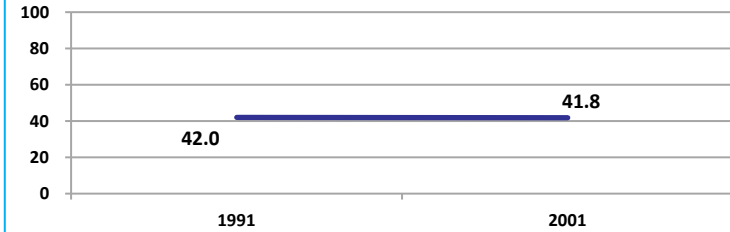
Source: Census

Source: Census

### ECONOMY

#### Work participation rate

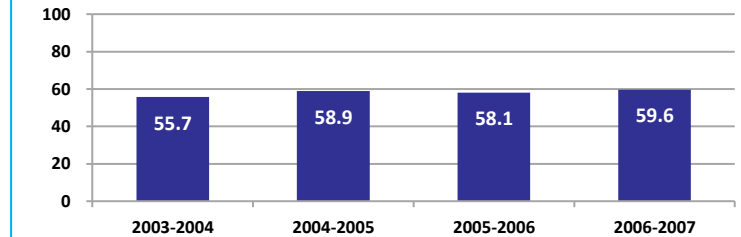
Percent



Source: Census

#### Net sown area irrigated

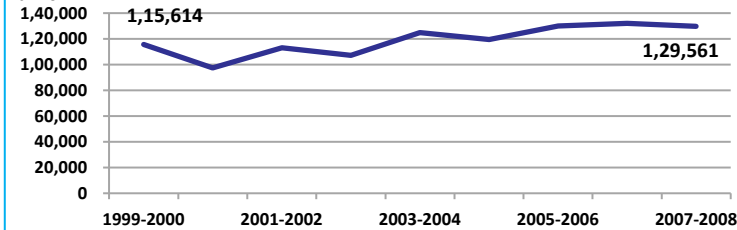
Percent



Source: Census, 2001 Projected

#### Net district domestic product at constant (1990-2000) prices

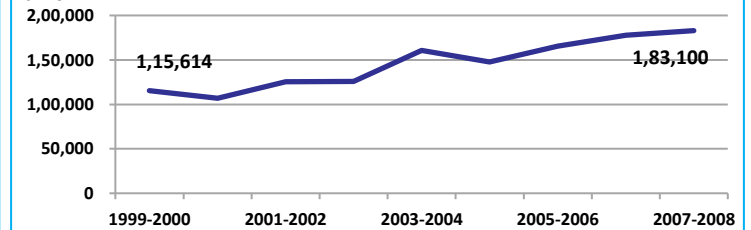
Lakhs



Source: DES, 2009

#### Net district domestic product at current prices

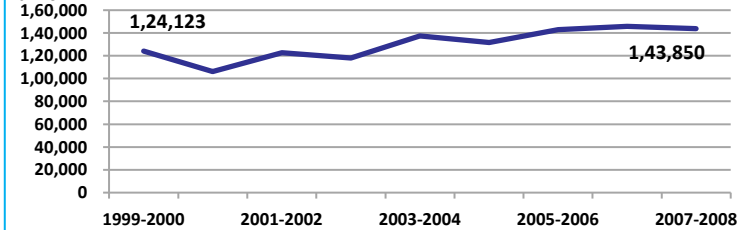
Lakhs



Source: DES, 2009

#### Gross district domestic Product at constant (1990-2000) prices

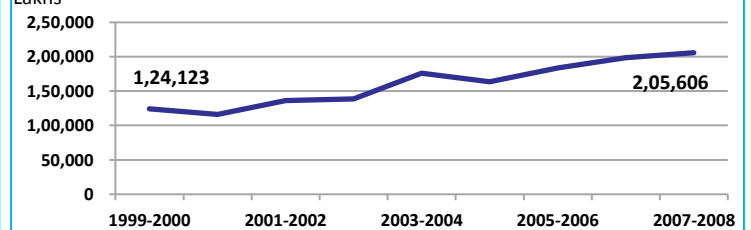
Lakhs



Source: DES, 2009

#### Gross district domestic product at current prices

Lakhs



Source: DES, 2009



State Planning Commission



## Sehore

### ECONOMY

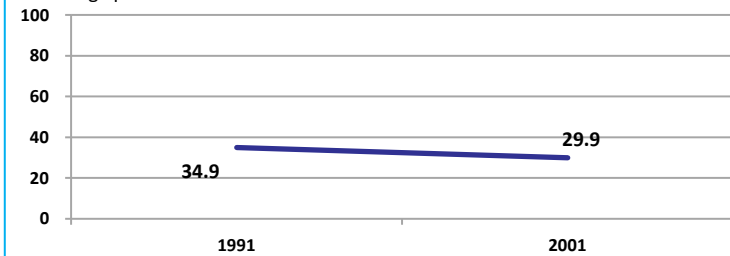
Location/Caste	Total	Rural	Urban	SC	ST	Non SC/ST	Time Period
Industrial working population (%)	627470	-	-	-	-	-	(2001)
Marginal working population (%)	13.3	-	-	-	-	-	(2001)
Main working population (%)	28.6	-	-	-	-	-	(2001)
Farmers and agricultural labour in population (%)	33.9	-	-	-	-	-	(2001)
Schedule caste population (%)	20.5	21.8	14.5	-	-	-	(2001)
Schedule tribe population (%)	10.8	12.3	3.8	-	-	-	(2001)
Households having none of the six household assets (Radio/Transistor, Television, Telephone, Bicycle, Two wheeler, Four wheeler) (#)	81479	75234	6245	22725	12899	-	(2001)

Source: Census

### EDUCATION

#### Gender gap in literacy rate (Male-Female)

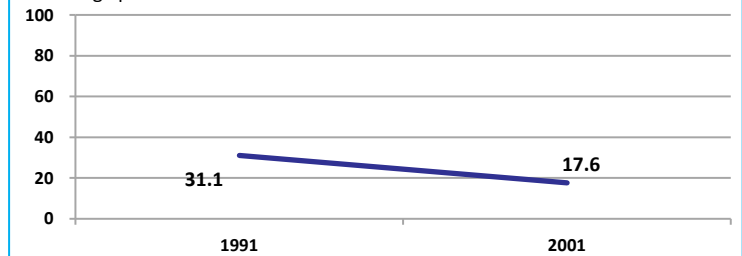
Percentage points



Source: Census

#### Gap in literacy rate by residence (Urban-Rural)

Percentage points



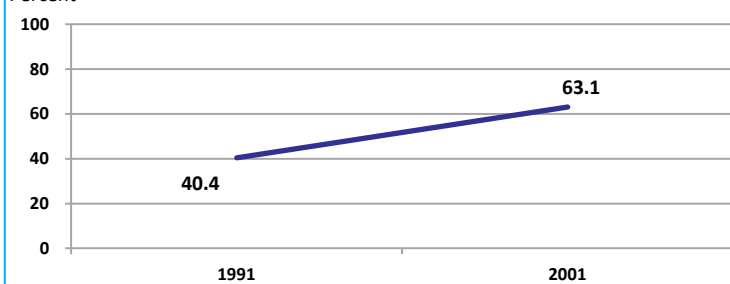
Source: Census

Location/Sex/Caste	Total	Male	Female	Rural	Urban	SC	ST	Time Period
Primary gross enrolment ratio **	103.8	104.3	103.3	-	-	-	-	(2008-2009)
Upper primary gross enrolment ratio **	103.2	102.9	103.6	-	-	-	-	(2008-2009)
Elementary gross enrolment ratio **	103.7	103.9	103.4	-	-	-	-	(2008-2009)
Primary dropout rate (%) **	-	9.2	13.5	-	-	-	-	(2008-2009)
Ratio of literate women to men (15-24 years) *	0.6	-	-	0.5	0.7	0.5	0.5	(2001)
Persons age 15+ completed primary education (%) *	42.1	57.9	24.7	36.4	66.2	16.2	12.5	(2001)

Source: Census \*/Rajya Shiksha Kendra \*\*

#### Literacy rate 7+

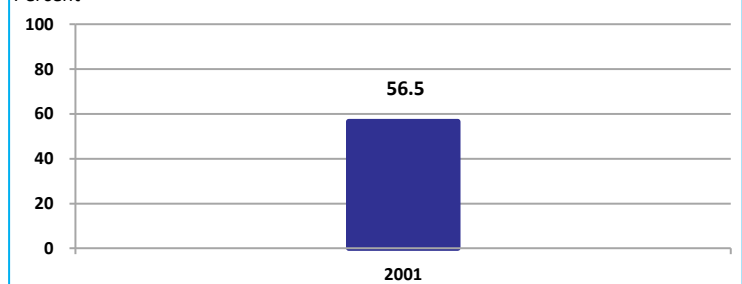
Percent



Source: Census

#### Literacy rate 15+

Percent



Source: Census

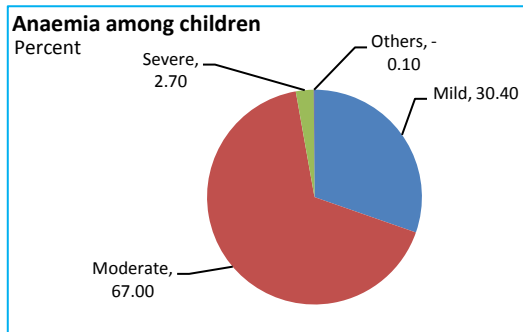


## Sehore

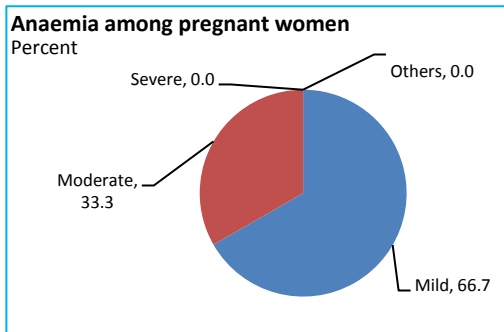
### HEALTH & NUTRITION

Contraceptive prevalence rate (15-44 yr)	51.6	Fully immunized children (12-23 months)	22.4	Prevalence of underweight (moderate and severe, <6 yr)	58.2
--	------	---	------	--	------

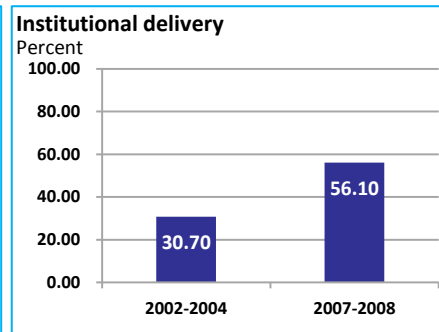
Source: DLHS, 2002-2004



Source: DLHS, 2002-2004

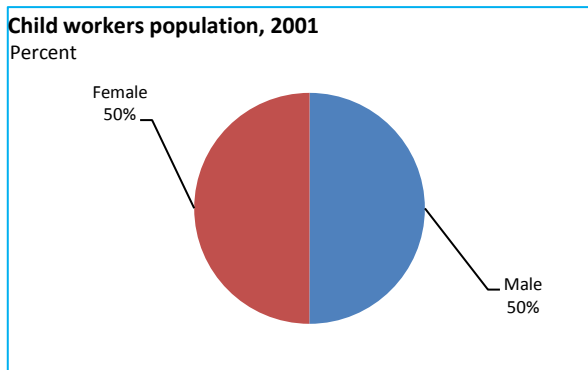


Source: DLHS, 2002-2004

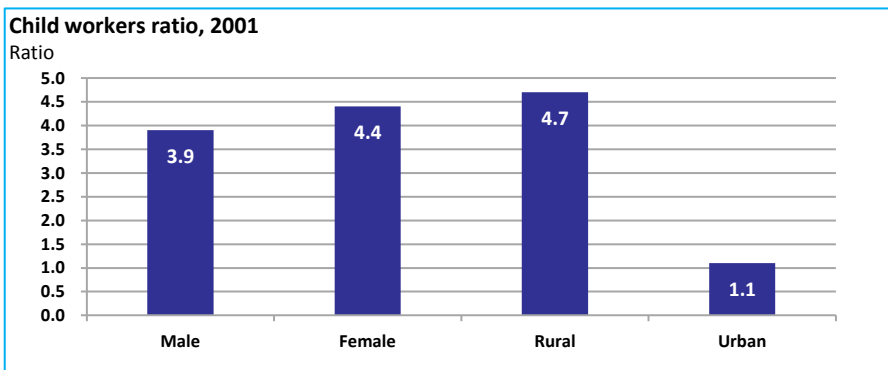


Source: DLHS

### CHILD PROTECTION



Source: Census



### ENVIRONMENT

Location/Caste	Total	Rural	Urban	SC	ST	Time Period
Households living in dilapidated houses (#)	11760	10330	1430	3691	2683	(2001)
Households without electricity (#)	27759	26006	1753	6552	6075	(2001)
Households without latrines (#)	134040	125515	8525	35205	17494	(2001)

Source: Census

Habitation with drinking water access					
<40 LPCD	40 to 55 LPCD	With 0 population coverage	With 100% population coverage	With population coverage > 0 and < 100%	Time Period
0	250	-	343	-	(2009)

Source: IMIS

### INFRASTRUCTURE

Proportion of villages having any health facility PHC/SHC/AYUSH (%)	27.1	(2001)	Proportion of villages having at least a primary school (%)	87.3	(2001)
---	------	--------	---	------	--------

Source: Census

