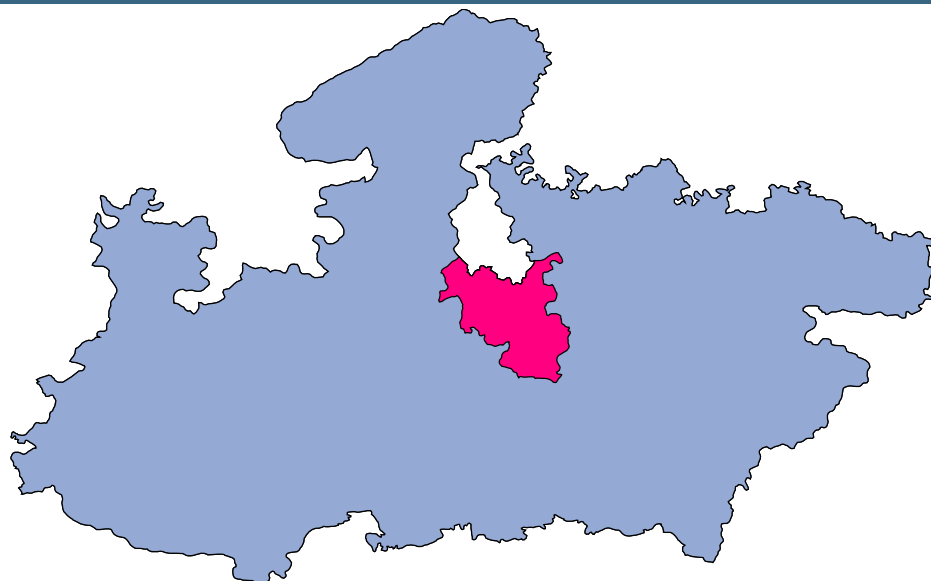




# Sagar



## MONITORING XI PLAN GOALS



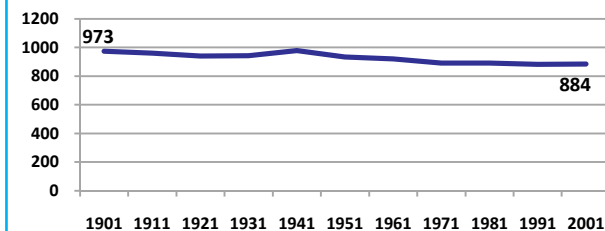
## Sagar

### DEMOGRAPHICS

Location/Caste	Total	Rural	Urban	SC	ST	Non SC/ST	Time Period
Population size (000)	2022	-	-	-	-	-	(2001)
Average annual population growth rate (%)	2.0	2.0	2.1	-	-	-	(2001)
Decadal growth rate (%)	22.7	-	-	-	-	-	(2001)
Population density (Persons per Sq Km)	197	-	-	-	-	-	(2001)
Sex ratio (Females per 1000 males)	884	880	894	868	942	881	(2001)
Sex ratio (0-6 years, Females per 1000 males)	931	932	929	950	970	894	(2001)
Level of urbanization (%)	29.2	-	-	-	-	-	(2001)

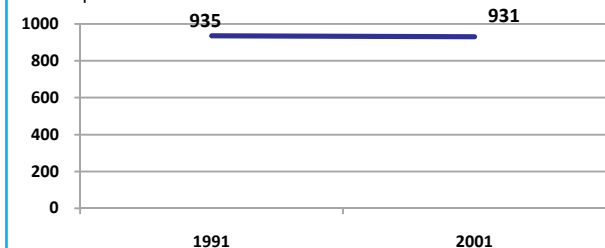
#### Sex ratio

Females per 1000 males



#### Sex ratio, 0-6 years

Females per 1000 males



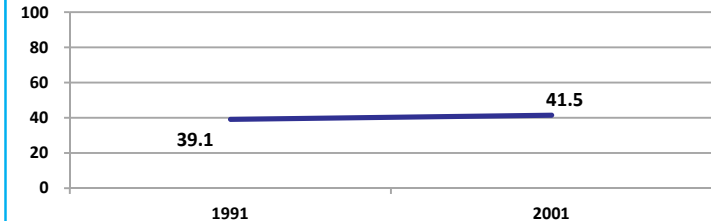
Source: Census

Source: Census

### ECONOMY

#### Work participation rate

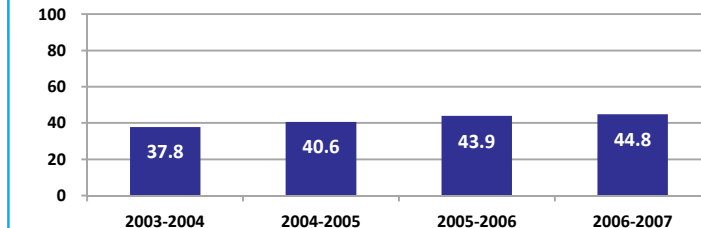
Percent



Source: Census

#### Net sown area irrigated

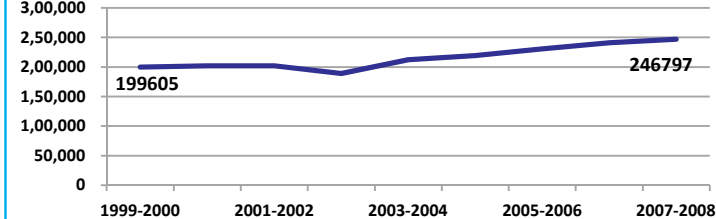
Percent



Source: Census, 2001 Projected

#### Net District Domestic Product at constant (1990-2000) prices

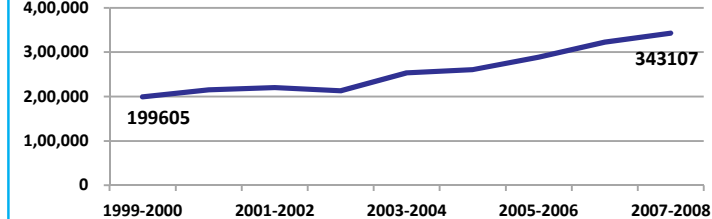
Lakhs



Source: DES, 2009

#### Net District Domestic Product at current prices

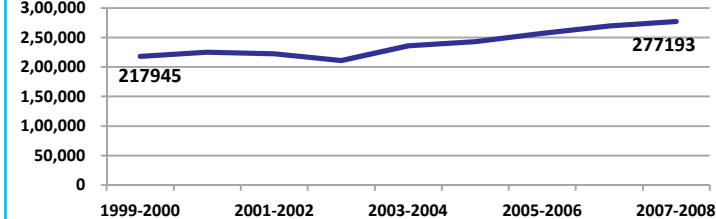
Lakhs



Source: DES, 2009

#### Gross District Domestic Product at constant (1990-2000) prices

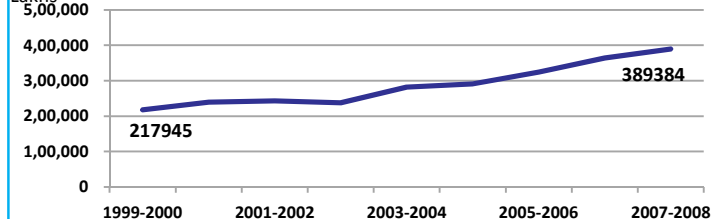
Lakhs



Source: DES, 2009

#### Gross District Domestic Product at current prices

Lakhs



Source: DES, 2009



State Planning Commission



## Sagar

### ECONOMY

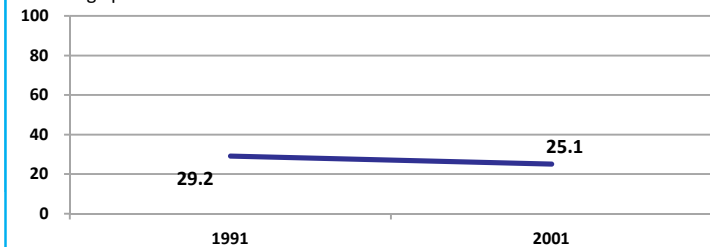
Location/Caste	Total	Rural	Urban	SC	ST	Non SC/ST	Time Period
Industrial working population (%)	1182224	-	-	-	-	-	(2001)
Marginal working population (%)	10.0	-	-	-	-	-	(2001)
Main working population (%)	31.5	-	-	-	-	-	(2001)
Farmers and agricultural labour in population (%)	21.8	-	-	-	-	-	(2001)
Schedule caste population (%)	20.5	20.6	20.3	-	-	-	(2001)
Schedule tribe population (%)	9.7	13.0	1.7	-	-	-	(2001)
Households having none of the six household assets (Radio/Transistor, Television, Telephone, Bicycle, Two wheeler, Four wheeler) (#)	187239	163835	23404	49140	27362	-	(2001)

Source: Census

### EDUCATION

#### Gender gap in literacy rate (Male-Female)

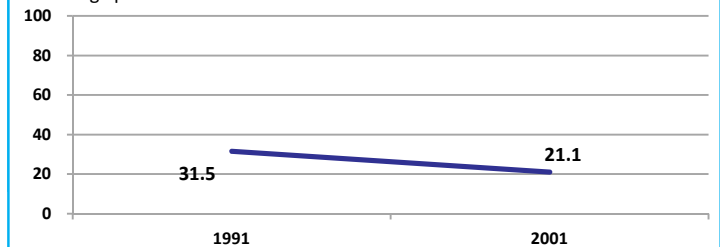
Percentage points



Source: Census

#### Gap in literacy rate by residence (Urban-Rural)

Percentage points



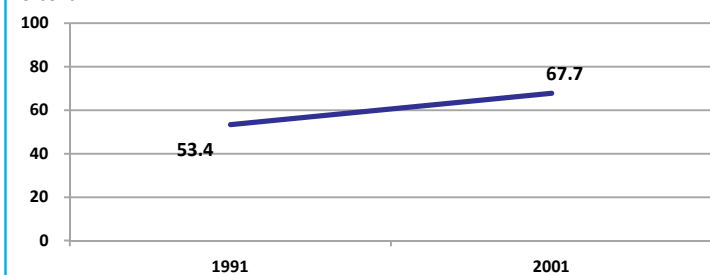
Source: Census

Location/Sex/Caste	Total	Male	Female	Rural	Urban	SC	ST	Time Period
Primary gross enrolment ratio **	107.3	107.2	107.4	-	-	-	-	(2008-2009)
Upper primary gross enrolment ratio **	107.0	106.7	107.3	-	-	-	-	(2008-2009)
Elementary gross enrolment ratio **	107.2	107.0	107.3	-	-	-	-	(2008-2009)
Primary dropout rate (%) **	-	13.5	13.0	-	-	-	-	(2008-2009)
Ratio of literate women to men (15-24 years) *	0.6	-	-	0.5	0.7	0.5	0.4	(2001)
Persons age 15+ completed primary education (%) *	50.3	62.8	35.8	40.7	71.6	4.9	13.3	(2001)

Source: Census \*/Rajya Shiksha Kendra \*\*

#### Literacy rate 7+

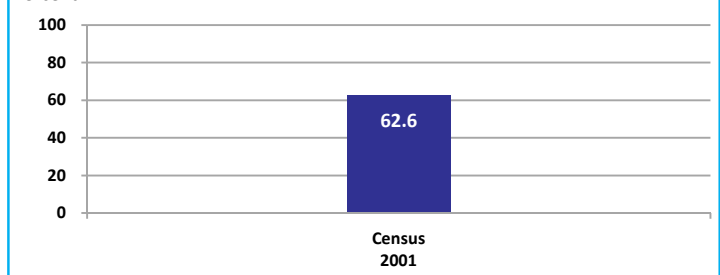
Percent



Source: Census

#### Literacy rate 15+

Percent

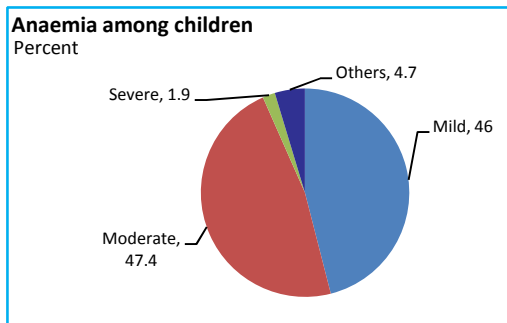


## Sagar

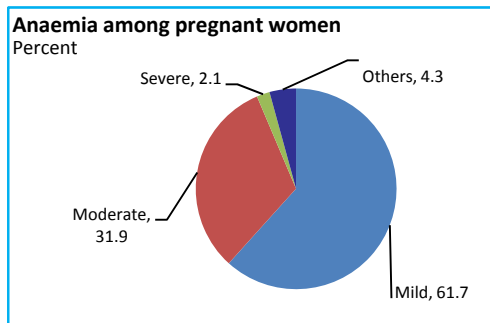
### HEALTH & NUTRITION

Contraceptive prevalence rate (15-44 yr)	47.4	Fully immunized children (12-23 months)	34.1	Prevalence of underweight (moderate and severe, <6 yr)	65.5
--	------	---	------	--	------

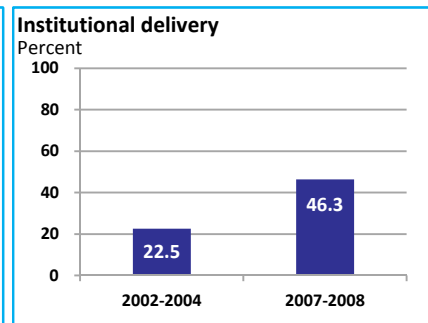
Source: DLHS, 2002-2004



Source: DLHS, 2002-2004

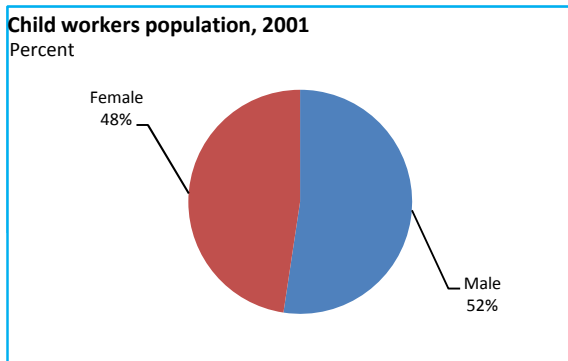


Source: DLHS, 2002-2004

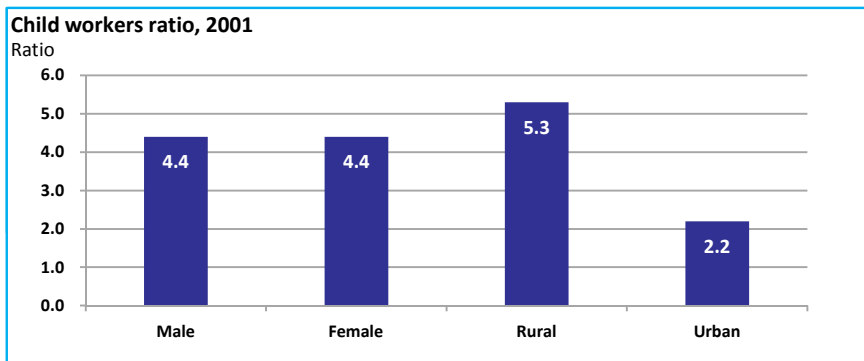


Source: DLHS

### CHILD PROTECTION



Source: Census



### ENVIRONMENT

Location/Caste	Total	Rural	Urban	SC	ST	Time Period
Households living in dilapidated houses (#)	17082	14273	2809	4817	4440	(2001)
Households without electricity (#)	114222	105346	8876	27319	18447	(2001)
Households without latrines (#)	291521	253509	38012	75844	33730	(2001)

Source: Census

**Habitation with drinking water access**

<40 LPCD	40 to 55 LPCD	With 0 population coverage	With 100% population coverage	With population coverage > 0 and < 100%	Time Period
0	175	-	459	-	(2009)

Source: IMIS

### INFRASTRUCTURE

Proportion of villages having any health facility PHC/SHC/AYUSH (%)	18.3	(2001)	Proportion of villages having at least a primary school (%)	68.7	(2001)
---	------	--------	---	------	--------

Source: Census

