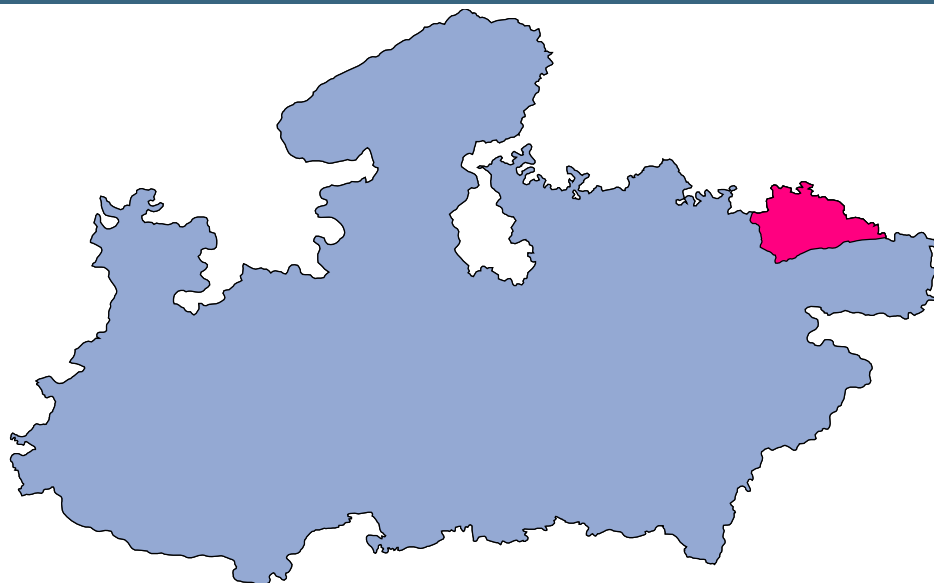




Rewa



MONITORING XI PLAN GOALS



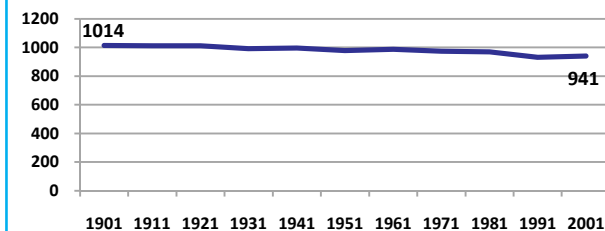
Rewa

DEMOGRAPHICS

Location/Caste	Total	Rural	Urban	SC	ST	Non SC/ST	Time Period
Population size (000)	1973	-	-	-	-	-	(2001)
Average annual population growth rate (%)	2.4	2.3	3.0	-	-	-	(2001)
Decadal growth rate (%)	26.9	-	-	-	-	-	(2001)
Population density (Persons per Sq Km)	313	-	-	-	-	-	(2001)
Sex ratio (Females per 1000 males)	941	954	878	939	924	941	(2001)
Sex ratio (0-6 years, Females per 1000 males)	926	930	905	960	981	825	(2001)
Level of urbanization (%)	16.2	-	-	-	-	-	(2001)

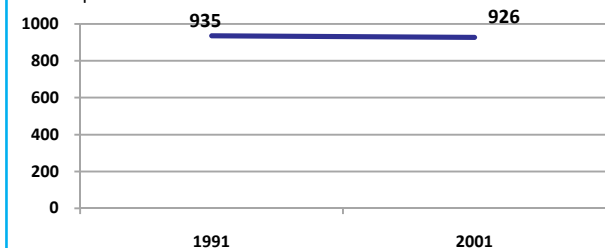
Sex ratio

Females per 1000 males



Sex ratio, 0-6 years

Females per 1000 males



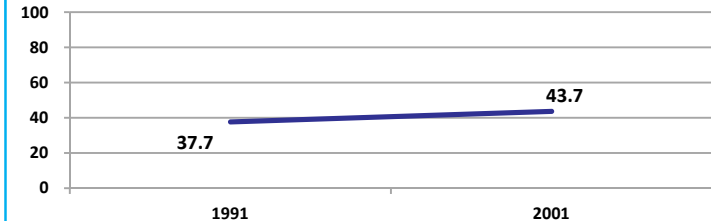
Source: Census

Source: Census

ECONOMY

Work participation rate

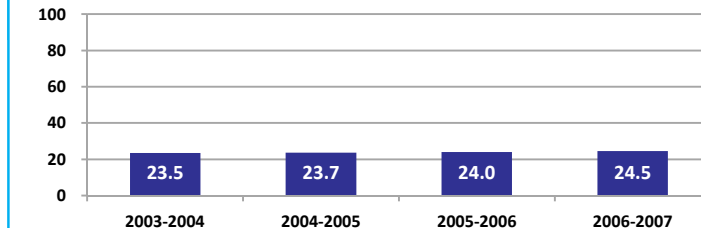
Percent



Source: Census

Net sown area irrigated

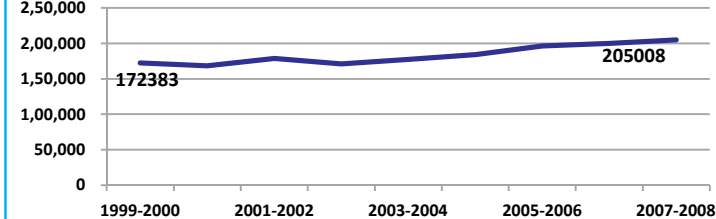
Percent



Source: Census, 2001 Projected

Net District Domestic Product at constant (1990-2000) prices

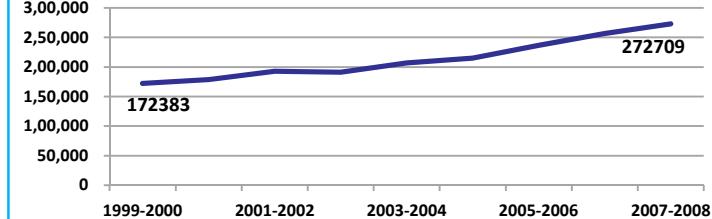
Lakhs



Source: DES, 2009

Net District Domestic Product at current prices

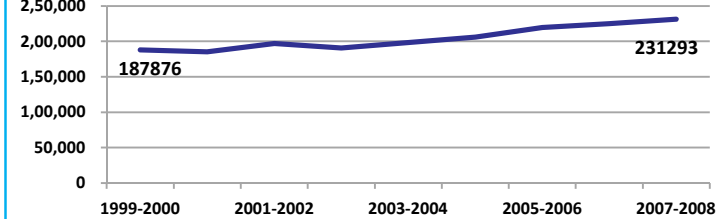
Lakhs



Source: DES, 2009

Gross District Domestic Product at constant (1990-2000) prices

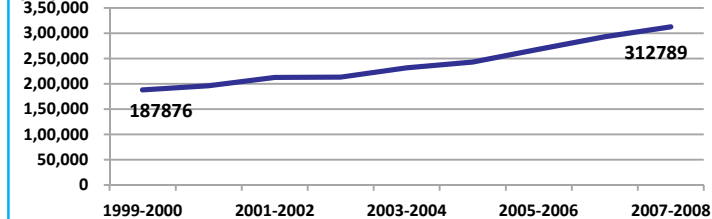
Lakhs



Source: DES, 2009

Gross District Domestic Product at current prices

Lakhs



Source: DES, 2009



Rewa

ECONOMY

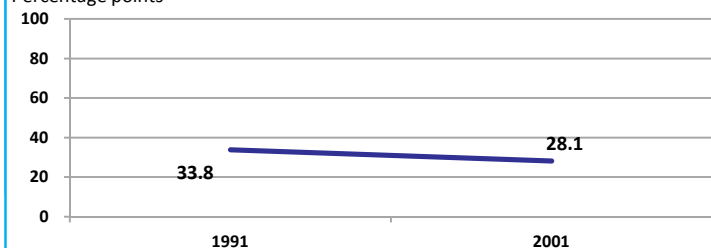
Location/Caste	Total	Rural	Urban	SC	ST	Non SC/ST	Time Period
Industrial working population (%)	1110347	-	-	-	-	-	(2001)
Marginal working population (%)	14.1	-	-	-	-	-	(2001)
Main working population (%)	29.6	-	-	-	-	-	(2001)
Farmers and agricultural labour in population (%)	34.2	-	-	-	-	-	(2001)
Schedule caste population (%)	15.6	16.3	11.7	-	-	-	(2001)
Schedule tribe population (%)	12.9	14.2	6.2	-	-	-	(2001)
Households having none of the six household assets (Radio/Transistor, Television, Telephone, Bicycle, Two wheeler, Four wheeler) (#)	126322	114521	11801	26890	30434	-	(2001)

Source: Census

EDUCATION

Gender gap in literacy rate (Male-Female)

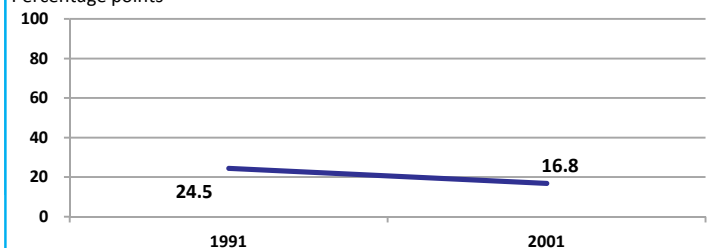
Percentage points



Source: Census

Gap in literacy rate by residence (Urban-Rural)

Percentage points



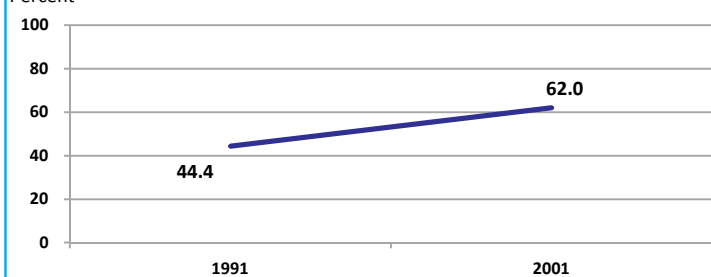
Source: Census

Location/Sex/Caste	Total	Male	Female	Rural	Urban	SC	ST	Time Period
Primary gross enrolment ratio **	101.1	100.0	102.2	-	-	-	-	(2008-2009)
Upper primary gross enrolment ratio **	99.2	99.4	99.0	-	-	-	-	(2008-2009)
Elementary gross enrolment ratio **	100.4	99.8	101.1	-	-	-	-	(2008-2009)
Primary dropout rate (%) **	-	15.9	20.2	-	-	-	-	(2008-2009)
Ratio of literate women to men (15-24 years) *	0.6	-	-	0.6	0.7	0.4	0.3	(2001)
Persons age 15+ completed primary education (%) *	48.7	64.5	32.2	44.8	67.4	11.1	11.6	(2001)

Source: Census */Rajya Shiksha Kendra **

Literacy rate 7+

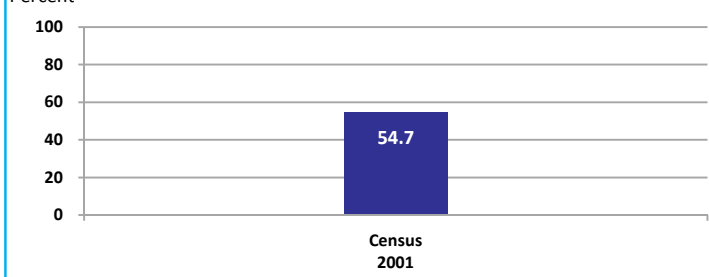
Percent



Source: Census

Literacy rate 15+

Percent

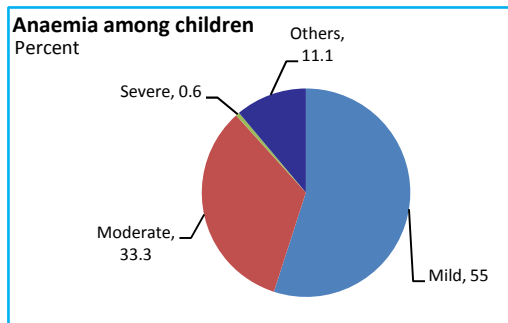


Rewa

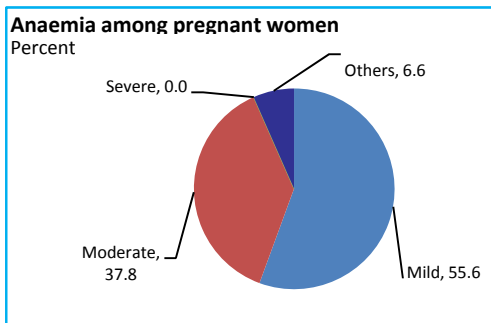
HEALTH & NUTRITION

Contraceptive prevalence rate (15-44 yr)	40.6	Fully immunized children (12-23 months)	24.3	Prevalence of underweight (moderate and severe, <6 yr)	30.5
--	------	---	------	--	------

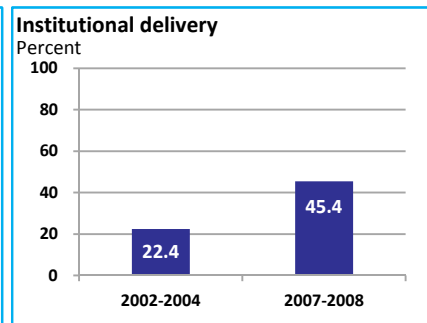
Source: DLHS, 2002-2004



Source: DLHS, 2002-2004

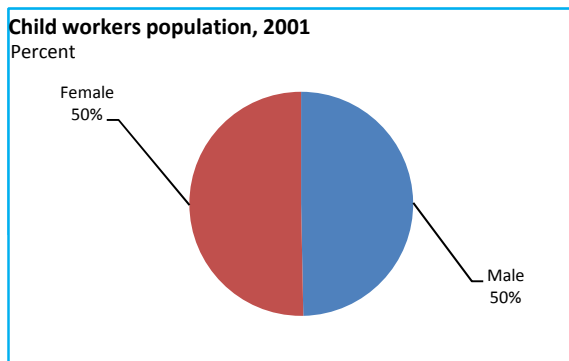


Source: DLHS, 2002-2004

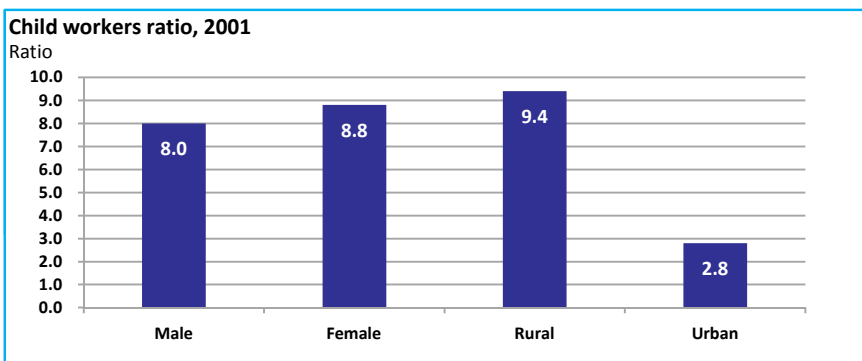


Source: DLHS

CHILD PROTECTION



Source: Census



ENVIRONMENT

Location/Caste	Total	Rural	Urban	SC	ST	Time Period
Households living in dilapidated houses (#)	7448	5869	1579	1675	1762	(2001)
Households without electricity (#)	180816	172412	8404	37560	37781	(2001)
Households without latrines (#)	335229	307911	27318	60212	52603	(2001)

Source: Census

Habitation with drinking water access

<40 LPCD	40 to 55 LPCD	With 0 population coverage	With 100% population coverage	With population coverage > 0 and < 100%	Time Period
5	225	-	3547	-	(2009)

Source: IMIS

INFRASTRUCTURE

Proportion of villages having any health facility PHC/SHC/AYUSH (%)	22.3	(2001)	Proportion of villages having at least a primary school (%)	56.7	(2001)
---	------	--------	---	------	--------

Source: Census

