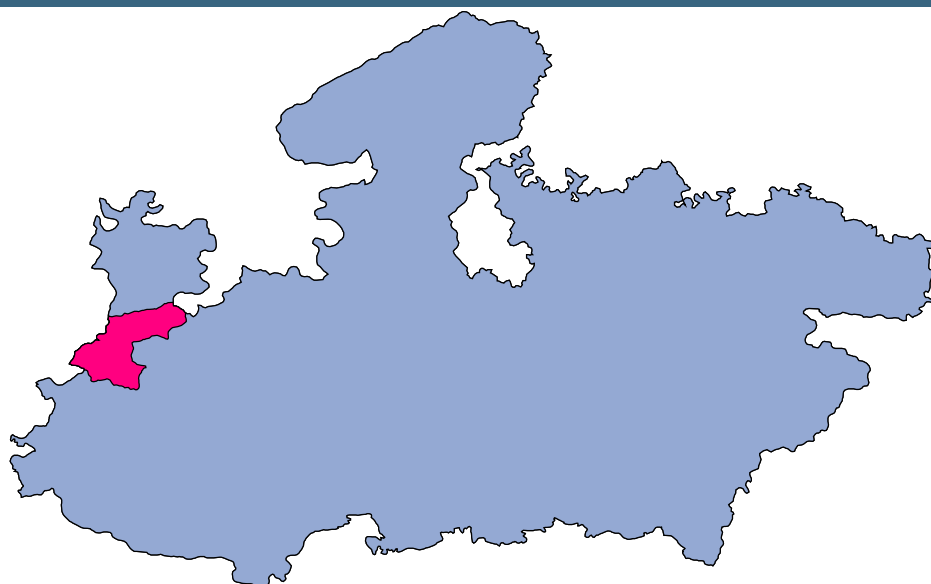




Ratlam



MONITORING XI PLAN GOALS



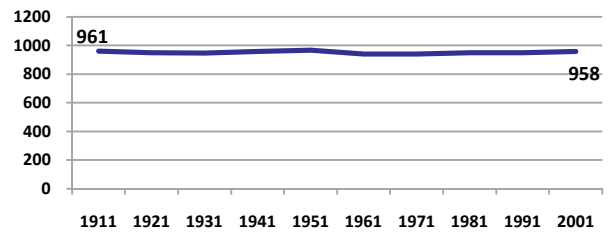
Ratlam

DEMOGRAPHICS

| Location/Caste | Total | Rural | Urban | SC | ST | Non SC/ST | Time Period |
|-----------------------------------------------|-------|-------|-------|-----|-----|-----------|-------------|
| Population size (000) | 1215 | - | - | - | - | - | (2001) |
| Average annual population growth rate (%) | 2.2 | 2.5 | 1.7 | - | - | - | (2001) |
| Decadal growth rate (%) | 25.1 | - | - | - | - | - | (2001) |
| Population density (Persons per Sq Km) | 250 | - | - | - | - | - | (2001) |
| Sex ratio (Females per 1000 males) | 958 | 964 | 943 | 959 | 975 | 952 | (2001) |
| Sex ratio (0-6 years, Females per 1000 males) | 957 | 965 | 931 | 960 | 918 | 833 | (2001) |
| Level of urbanization (%) | 30.3 | - | - | - | - | - | (2001) |

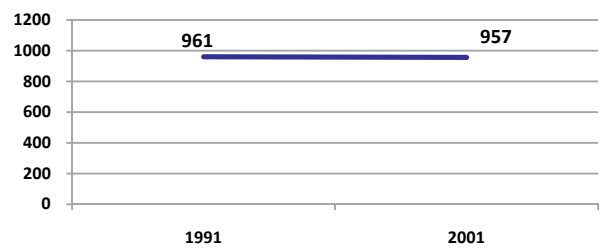
Sex ratio

Females per 1000 males



Sex ratio, 0-6 years

Females per 1000 males



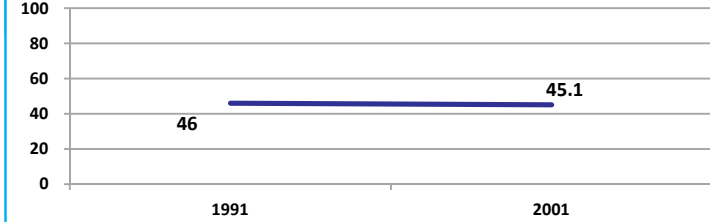
Source: Census

Source: Census

ECONOMY

Work participation rate

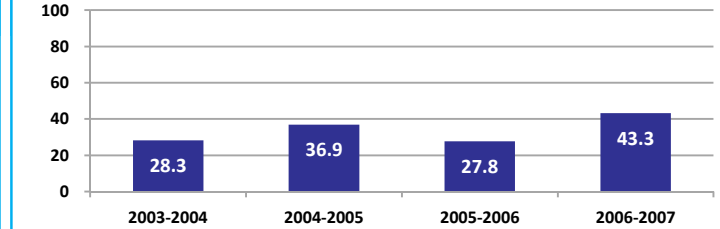
Percent



Source: Census

Net sown area irrigated

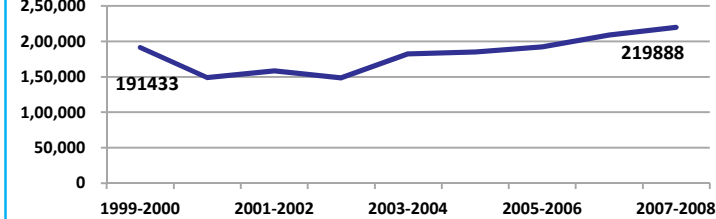
Percent



Source: Census, 2001 Projected

Net District Domestic Product at constant (1990-2000) prices

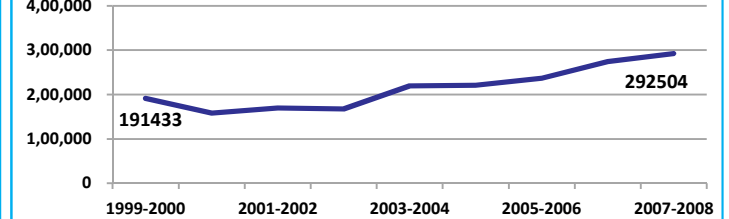
Lakhs



Source: DES, 2009

Net District Domestic Product at current prices

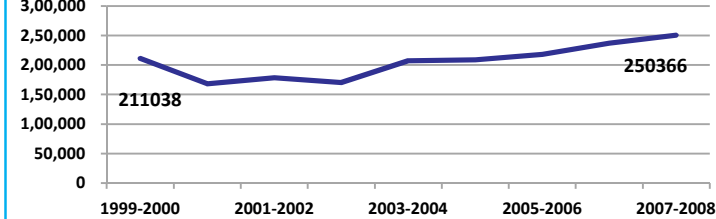
Lakhs



Source: DES, 2009

Gross District Domestic Product at constant (1990-2000) prices

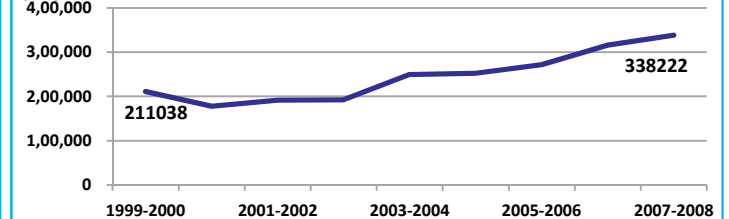
Lakhs



Source: DES, 2009

Gross District Domestic Product at current prices

Lakhs



Source: DES, 2009



Ratlam

ECONOMY

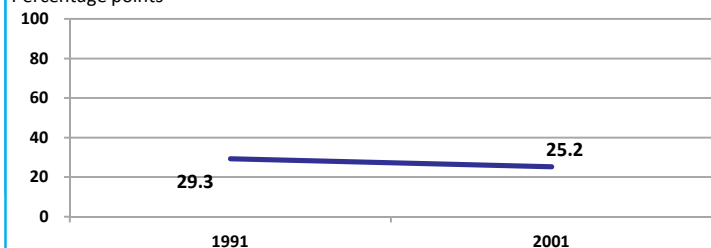
| Location/Caste | Total | Rural | Urban | SC | ST | Non SC/ST | Time Period |
|--------------------------------------------------------------------------------------------------------------------------------------|--------|-------|-------|-------|-------|-----------|-------------|
| Industrial working population (%) | 667541 | - | - | - | - | - | (2001) |
| Marginal working population (%) | 11.7 | - | - | - | - | - | (2001) |
| Main working population (%) | 33.3 | - | - | - | - | - | (2001) |
| Farmers and agricultural labour in population (%) | 33.6 | - | - | - | - | - | (2001) |
| Schedule caste population (%) | 13.4 | 14.8 | 10.3 | - | - | - | (2001) |
| Schedule tribe population (%) | 25.9 | 35.5 | 3.7 | - | - | - | (2001) |
| Households having none of the six household assets (Radio/Transistor, Television, Telephone, Bicycle, Two wheeler, Four wheeler) (#) | 75643 | 67925 | 7718 | 12255 | 37583 | - | (2001) |

Source: Census

EDUCATION

Gender gap in literacy rate (Male-Female)

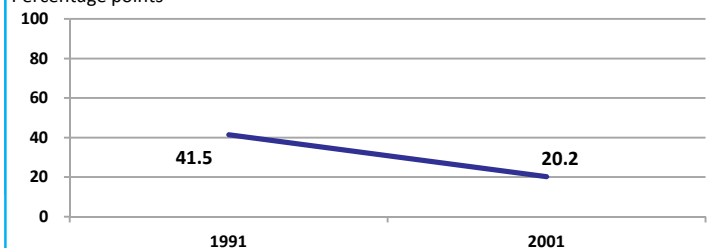
Percentage points



Source: Census

Gap in literacy rate by residence (Urban-Rural)

Percentage points



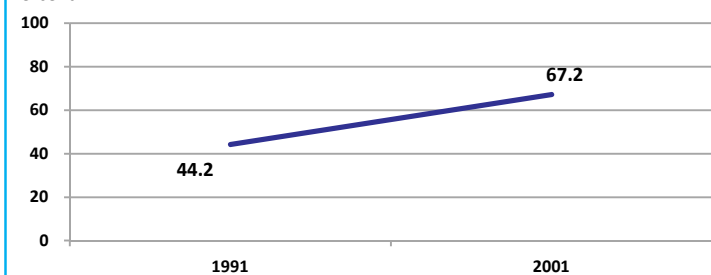
Source: Census

| Location/Sex/Caste | Total | Male | Female | Rural | Urban | SC | ST | Time Period |
|---------------------------------------------------|-------|------|--------|-------|-------|-----|------|-------------|
| Primary gross enrolment ratio ** | 99.0 | 99.0 | 98.9 | - | - | - | - | (2008-2009) |
| Upper primary gross enrolment ratio ** | 97.7 | 98.0 | 97.3 | - | - | - | - | (2008-2009) |
| Elementary gross enrolment ratio ** | 98.6 | 98.7 | 98.5 | - | - | - | - | (2008-2009) |
| Primary dropout rate (%) ** | - | 11.8 | 14.7 | - | - | - | - | (2008-2009) |
| Ratio of literate women to men (15-24 years) * | 0.7 | - | - | 0.7 | 0.8 | 0.6 | 0.5 | (2001) |
| Persons age 15+ completed primary education (%) * | 42.1 | 55.2 | 28.5 | 28.6 | 69.7 | 5.6 | 17.1 | (2001) |

Source: Census */Rajya Shiksha Kendra **

Literacy rate 7+

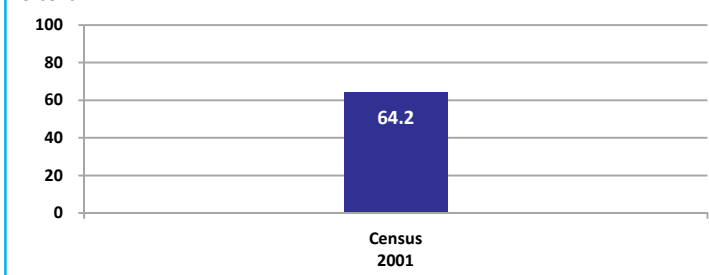
Percent



Source: Census

Literacy rate 15+

Percent

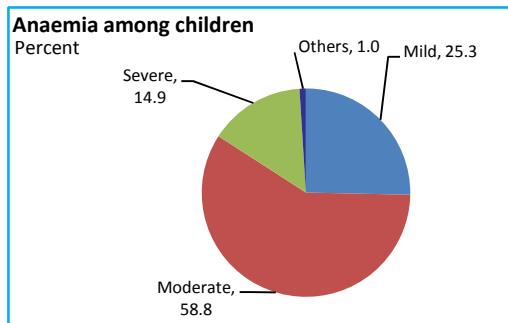


Ratlam

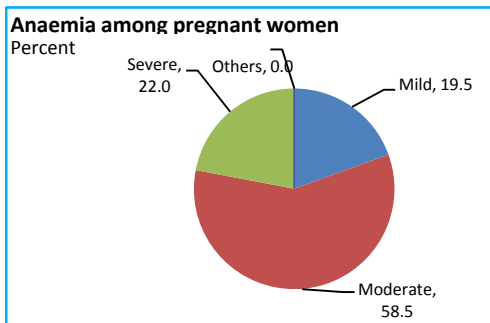
HEALTH & NUTRITION

| | | | | | |
|------------------------------------------|------|-----------------------------------------|------|--------------------------------------------------------|------|
| Contraceptive prevalence rate (15-44 yr) | 52.0 | Fully immunized children (12-23 months) | 40.1 | Prevalence of underweight (moderate and severe, <6 yr) | 67.0 |
|------------------------------------------|------|-----------------------------------------|------|--------------------------------------------------------|------|

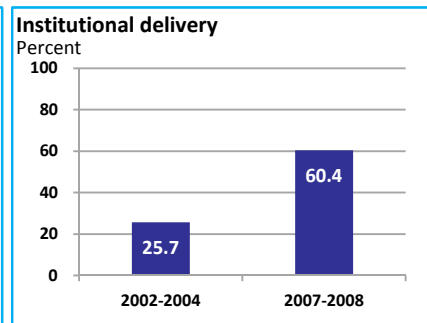
Source: DLHS, 2002-2004



Source: DLHS, 2002-2004

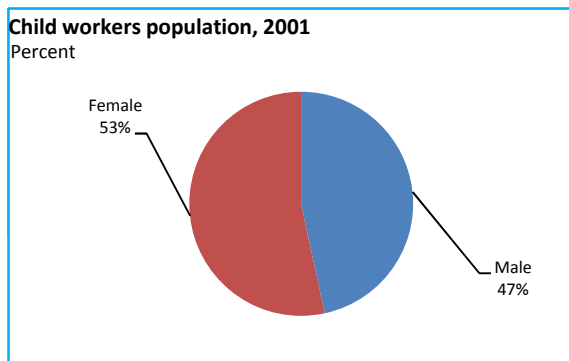


Source: DLHS, 2002-2004

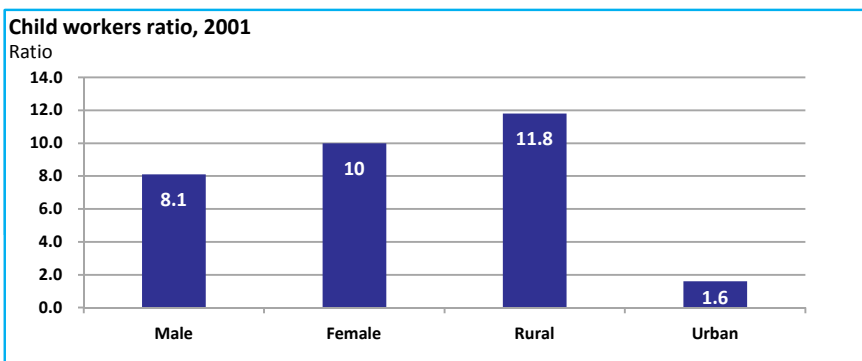


Source: DLHS

CHILD PROTECTION



Source: Census



ENVIRONMENT

| Location/Caste | Total | Rural | Urban | SC | ST | Time Period |
|---------------------------------------------|--------|--------|-------|-------|-------|-------------|
| Households living in dilapidated houses (#) | 3514 | 2213 | 1301 | 759 | 1102 | (2001) |
| Households without electricity (#) | 40115 | 37511 | 2604 | 3219 | 26779 | (2001) |
| Households without latrines (#) | 152135 | 138579 | 13556 | 27512 | 54217 | (2001) |

Source: Census

Habitation with drinking water access

| <40 LPCD | 40 to 55 LPCD | With 0 population coverage | With 100% population coverage | With population coverage > 0 and < 100% | Time Period |
|----------|---------------|----------------------------|-------------------------------|-----------------------------------------|-------------|
| 0 | 265 | - | 547 | - | (2009) |

Source: IMIS

INFRASTRUCTURE

| | | | | | |
|---------------------------------------------------------------------|------|--------|-------------------------------------------------------------|------|--------|
| Proportion of villages having any health facility PHC/SHC/AYUSH (%) | 18.7 | (2001) | Proportion of villages having at least a primary school (%) | 89.7 | (2001) |
|---------------------------------------------------------------------|------|--------|-------------------------------------------------------------|------|--------|

Source: Census

