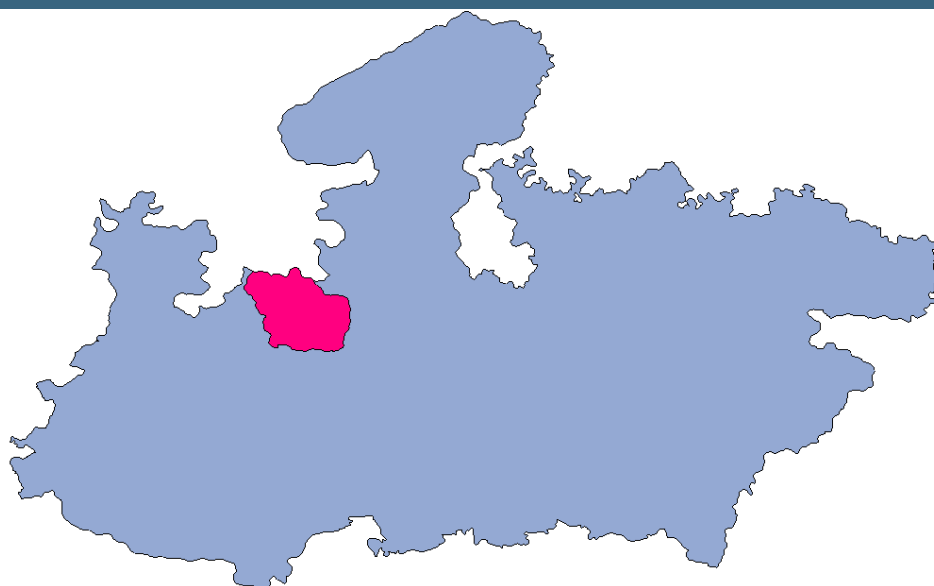




Rajgarh



MONITORING XI PLAN GOALS



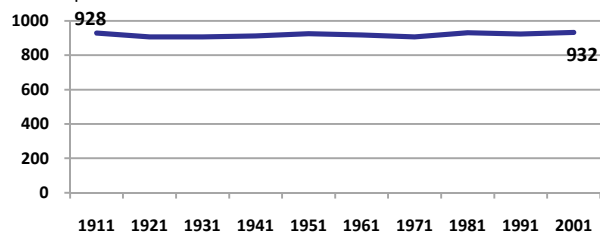
Rajgarh

DEMOGRAPHICS

Location/Caste	Total	Rural	Urban	SC	ST	Non SC/ST	Time Period
Population size (000)	1254	-	-	-	-	-	(2001)
Average annual population growth rate (%)	2.3	2.3	2.6	-	-	-	(2001)
Decadal growth rate (%)	26.3	-	-	-	-	-	(2001)
Population density (Persons per Sq Km)	204	-	-	-	-	-	(2001)
Sex ratio (Females per 1000 males)	932	936	915	934	928	931	(2001)
Sex ratio (0-6 years, Females per 1000 males)	938	942	917	952	941	861	(2001)
Level of urbanization (%)	17.3	-	-	-	-	-	(2001)

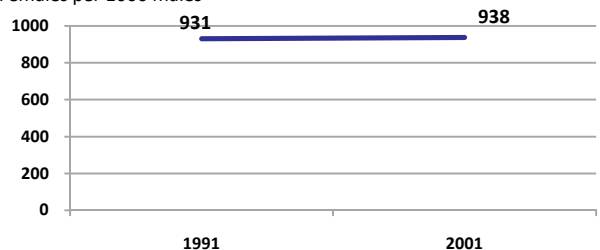
Sex ratio

Females per 1000 males



Sex ratio, 0-6 years

Females per 1000 males



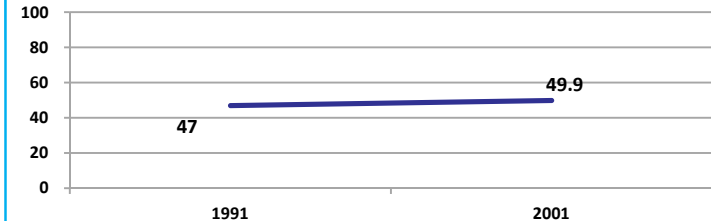
Source: Census

Source: Census

ECONOMY

Work participation rate

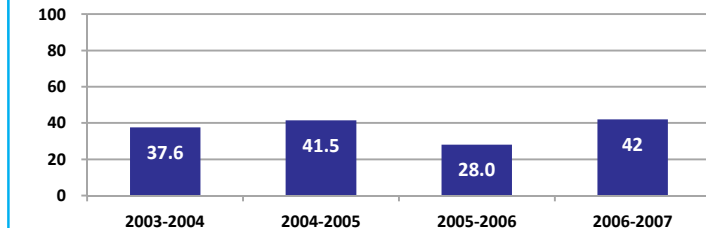
Percent



Source: Census

Net sown area irrigated

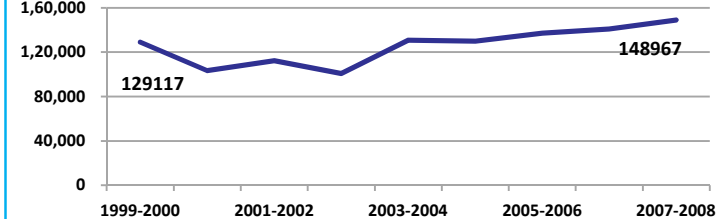
Percent



Source: Census, 2001 Projected

Net District Domestic Product at constant (1990-2000) prices

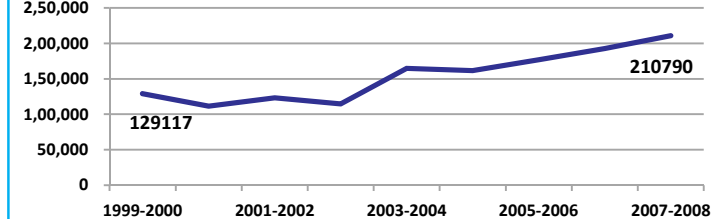
Lakhs



Source: DES, 2009

Net District Domestic Product at current prices

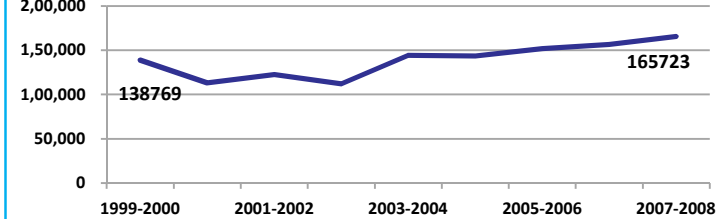
Lakhs



Source: DES, 2009

Gross District Domestic Product at constant (1990-2000) prices

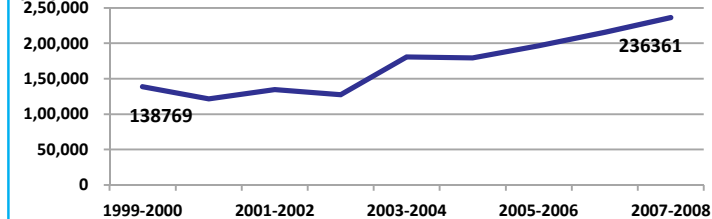
Lakhs



Source: DES, 2009

Gross District Domestic Product at current prices

Lakhs



Source: DES, 2009



Rajgarh

ECONOMY

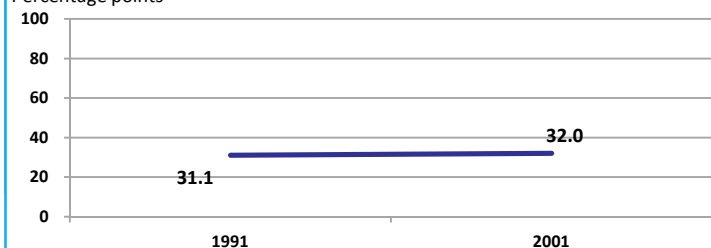
Location/Caste	Total	Rural	Urban	SC	ST	Non SC/ST	Time Period
Industrial working population (%)	628591	-	-	-	-	-	(2001)
Marginal working population (%)	14.9	-	-	-	-	-	(2001)
Main working population (%)	34.9	-	-	-	-	-	(2001)
Farmers and agricultural labour in population (%)	40.8	-	-	-	-	-	(2001)
Schedule caste population (%)	17.4	18.5	12.4	-	-	-	(2001)
Schedule tribe population (%)	3.8	3.8	3.5	-	-	-	(2001)
Households having none of the six household assets (Radio/Transistor, Television, Telephone, Bicycle, Two wheeler, Four wheeler) (#)	104691	94377	10314	25494	4761	-	(2001)

Source: Census

EDUCATION

Gender gap in literacy rate (Male-Female)

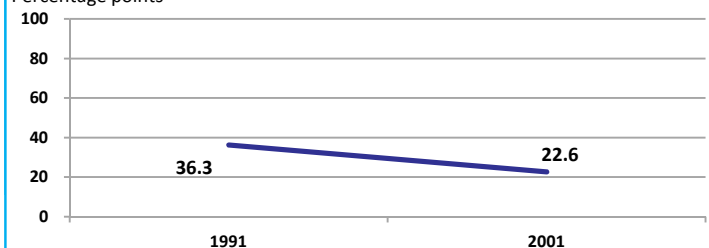
Percentage points



Source: Census

Gap in literacy rate by residence (Urban-Rural)

Percentage points



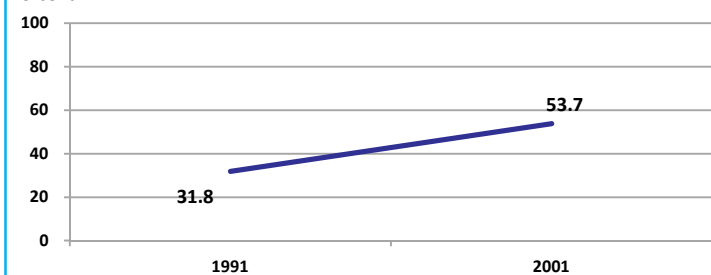
Source: Census

Location/Sex/Caste	Total	Male	Female	Rural	Urban	SC	ST	Time Period
Primary gross enrolment ratio **	107.8	110.9	104.7	-	-	-	-	(2008-2009)
Upper primary gross enrolment ratio **	99.5	102.2	96.1	-	-	-	-	(2008-2009)
Elementary gross enrolment ratio **	105.6	108.3	102.6	-	-	-	-	(2008-2009)
Primary dropout rate (%) **	-	19.8	23.6	-	-	-	-	(2008-2009)
Ratio of literate women to men (15-24 years) *	0.5	-	-	0.5	0.7	0.4	0.5	(2001)
Persons age 15+ completed primary education (%) *	32.2	47.0	16.6	26.0	61.1	12.1	11.4	(2001)

Source: Census */Rajya Shiksha Kendra **

Literacy rate 7+

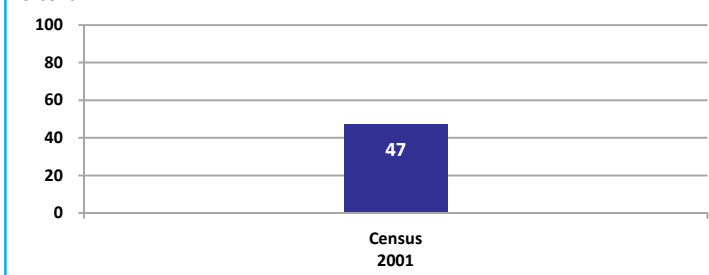
Percent



Source: Census

Literacy rate 15+

Percent

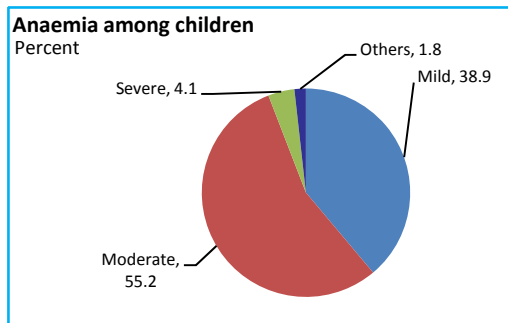


Rajgarh

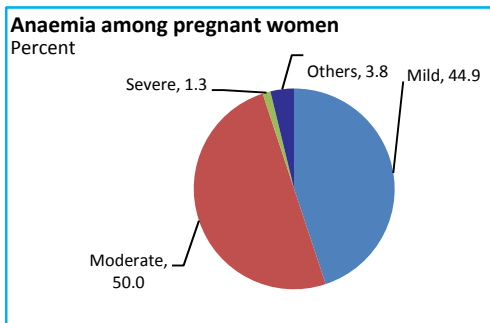
HEALTH & NUTRITION

Contraceptive prevalence rate (15-44 yr)	49.6	Fully immunized children (12-23 months)	26.8	Prevalence of underweight (moderate and severe, <6 yr)	68.3
--	------	---	------	--	------

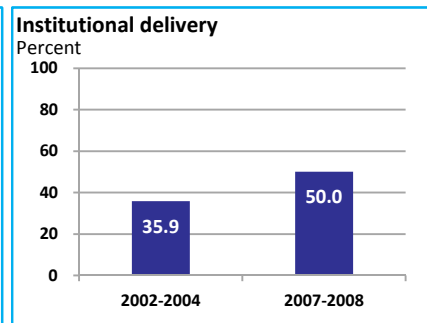
Source: DLHS, 2002-2004



Source: DLHS, 2002-2004

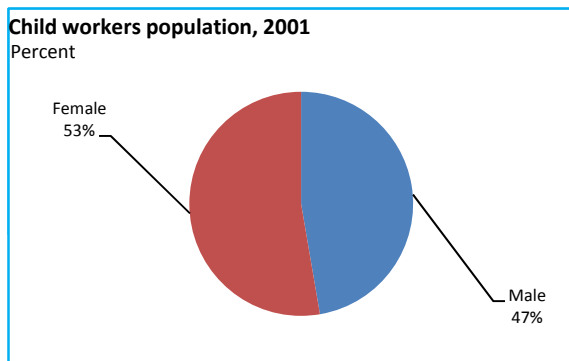


Source: DLHS, 2002-2004

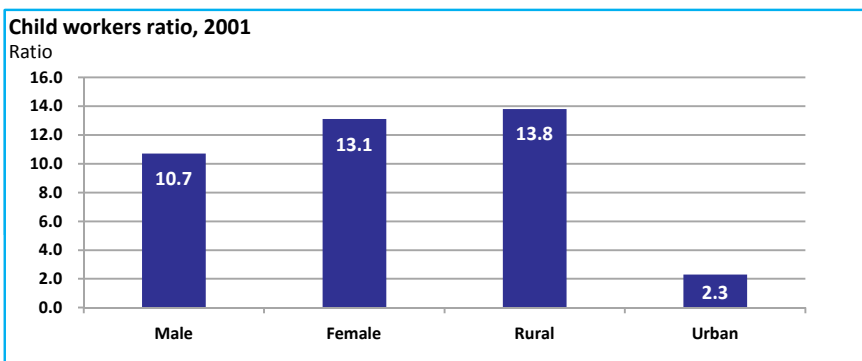


Source: DLHS

CHILD PROTECTION



Source: Census



ENVIRONMENT

Location/Caste	Total	Rural	Urban	SC	ST	Time Period
Households living in dilapidated houses (#)	5976	5338	638	2275	625	(2001)
Households without electricity (#)	32215	29968	2247	6511	1515	(2001)
Households without latrines (#)	182776	166991	15785	40751	7351	(2001)

Source: Census

Habitation with drinking water access

<40 LPCD	40 to 55 LPCD	With 0 population coverage	With 100% population coverage	With population coverage > 0 and < 100%	Time Period
0	0	-	1127	-	(2009)

Source: IMIS

INFRASTRUCTURE

Proportion of villages having any health facility PHC/SHC/AYUSH (%)	11.9	(2001)	Proportion of villages having at least a primary school (%)	78.3	(2001)
---	------	--------	---	------	--------

Source: Census

