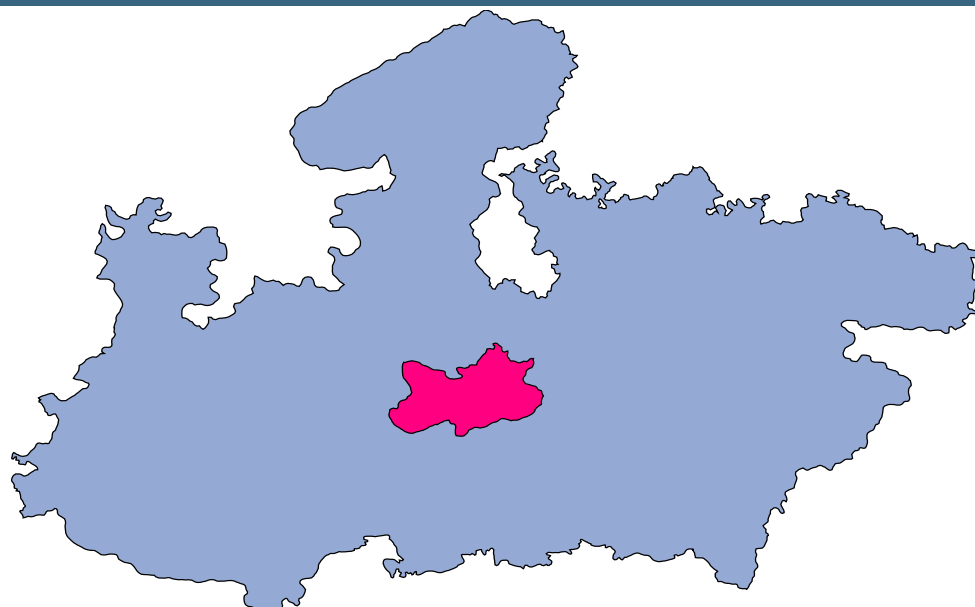




Raisen



MONITORING XI PLAN GOALS



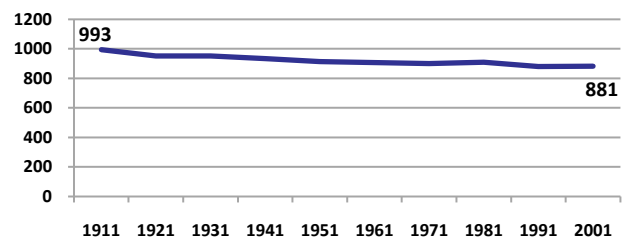
Raisen

DEMOGRAPHICS

Location/Caste	Total	Rural	Urban	SC	ST	Non SC/ST	Time Period
Population size (000)	1125	-	-	-	-	-	(2001)
Average annual population growth rate (%)	2.5	2.1	4.1	-	-	-	(2001)
Decadal growth rate (%)	28.4	-	-	-	-	-	(2001)
Population density (Persons per Sq Km)	133	-	-	-	-	-	(2001)
Sex ratio (Females per 1000 males)	881	884	866	871	932	871	(2001)
Sex ratio (0-6 years, Females per 1000 males)	936	939	924	946	936	854	(2001)
Level of urbanization (%)	18.4	-	-	-	-	-	(2001)

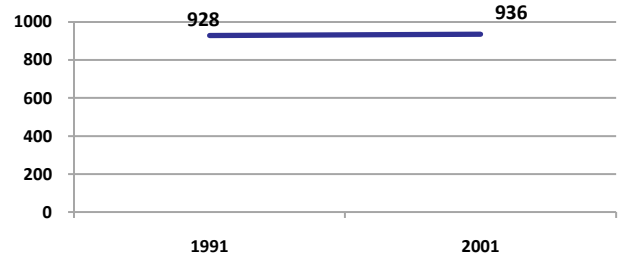
Sex ratio

Females per 1000 males



Sex ratio, 0-6 years

Females per 1000 males



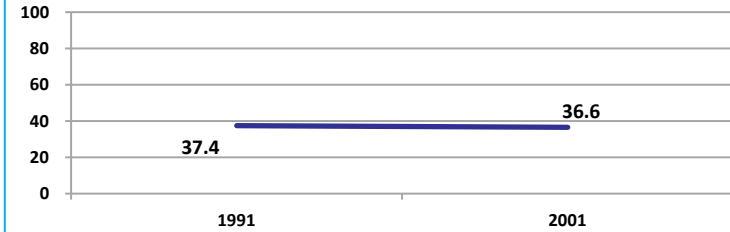
Source: Census

Source: Census

ECONOMY

Work participation rate

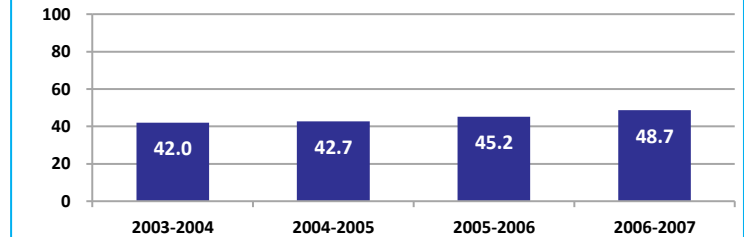
Percent



Source: Census

Net sown area irrigated

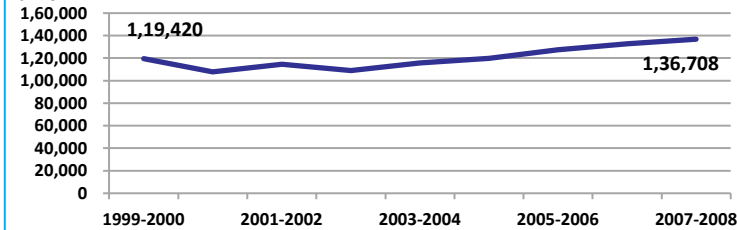
Percent



Source: Census, 2001 Projected

Net district domestic product at constant (1990-2000) prices

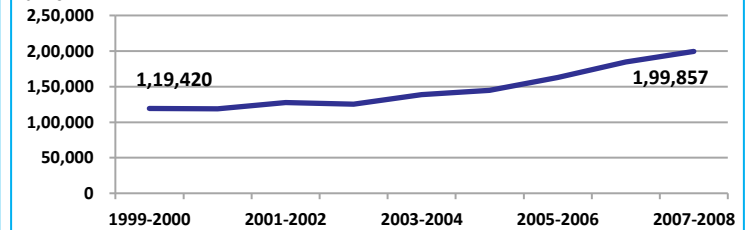
Lakhs



Source: DES, 2009

Net district domestic product at current prices

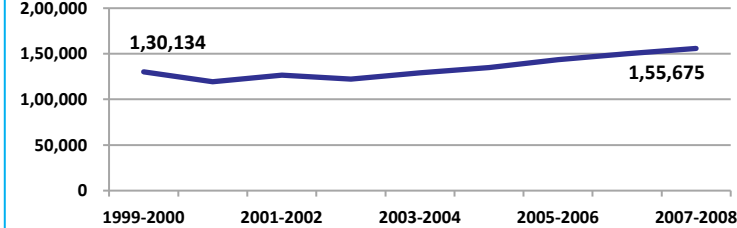
Lakhs



Source: DES, 2009

Gross district domestic Product at constant (1990-2000) prices

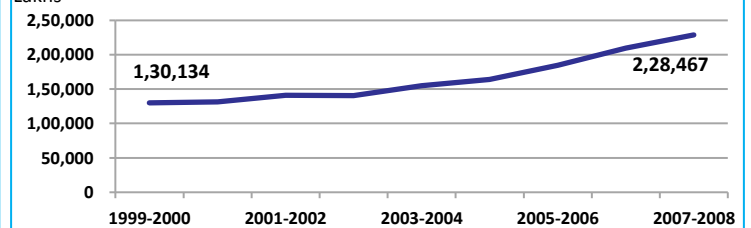
Lakhs



Source: DES, 2009

Gross district domestic product at current prices

Lakhs



Source: DES, 2009



State Planning Commission



Raisen

ECONOMY

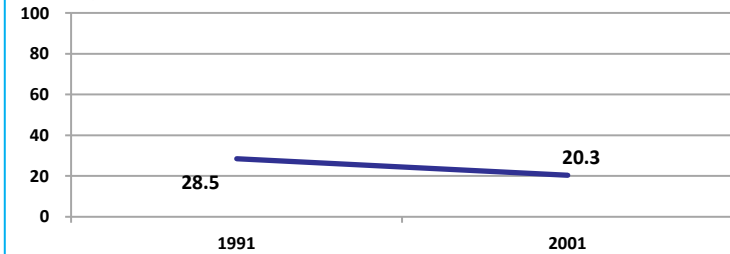
Location/Caste	Total	Rural	Urban	SC	ST	Non SC/ST	Time Period
Industrial working population (%)	713433	-	-	-	-	-	(2001)
Marginal working population (%)	9.1	-	-	-	-	-	(2001)
Main working population (%)	27.4	-	-	-	-	-	(2001)
Farmers and agricultural labour in population (%)	26.3	-	-	-	-	-	(2001)
Schedule caste population (%)	16.4	17.3	12.3	-	-	-	(2001)
Schedule tribe population (%)	15.7	18.2	4.9	-	-	-	(2001)
Households having none of the six household assets (Radio/Transistor, Television, Telephone, Bicycle, Two wheeler, Four wheeler) (#)	102880	92814	10066	21530	21250	-	(2001)

Source: Census

EDUCATION

Gender gap in literacy rate (Male-Female)

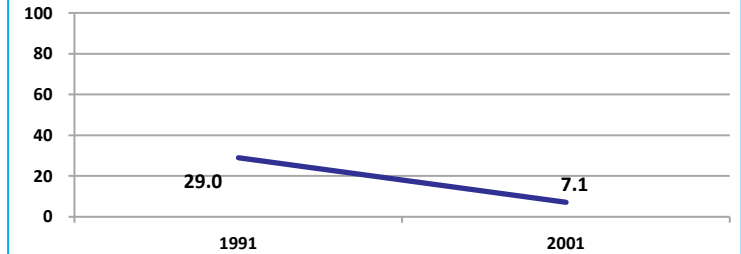
Percentage points



Source: Census

Gap in literacy rate by residence (Urban-Rural)

Percentage points



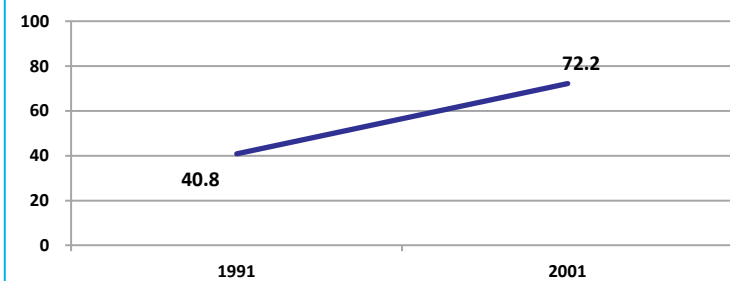
Source: Census

Location/Sex/Caste	Total	Male	Female	Rural	Urban	SC	ST	Time Period
Primary gross enrolment ratio **	111.4	113.3	109.2	-	-	-	-	(2008-2009)
Upper primary gross enrolment ratio **	93.2	93.5	92.8	-	-	-	-	(2008-2009)
Elementary gross enrolment ratio **	105.7	107.1	104.0	-	-	-	-	(2008-2009)
Primary dropout rate (%) **	-	8.4	10.2	-	-	-	-	(2008-2009)
Ratio of literate women to men (15-24 years) *	0.6	-	-	0.6	0.7	0.6	0.6	(2001)
Persons age 15+ completed primary education (%) *	45.9	58.4	31.5	41.2	66.0	23.0	11.2	(2001)

Source: Census */Rajya Shiksha Kendra **

Literacy rate 7+

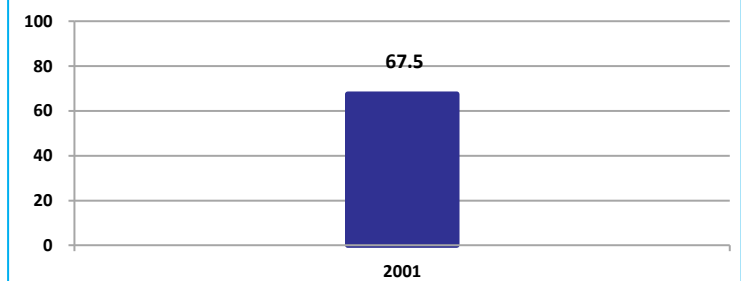
Percent



Source: Census

Literacy rate 15+

Percent



Source: Census

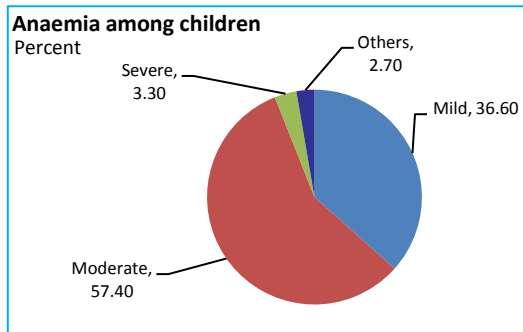


Raisen

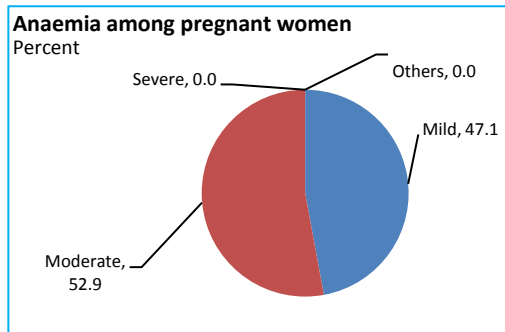
HEALTH & NUTRITION

Contraceptive prevalence rate (15-44 yr)	50.7	Fully immunized children (12-23 months)	25.1	Prevalence of underweight (moderate and severe, <6 yr)	48.1
--	------	---	------	--	------

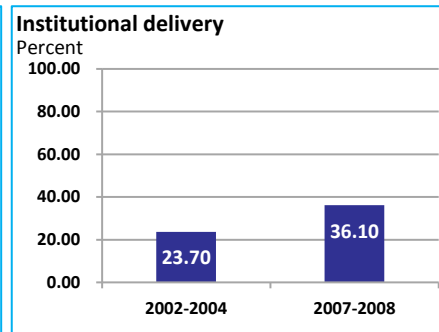
Source: DLHS, 2002-2004



Source: DLHS, 2002-2004

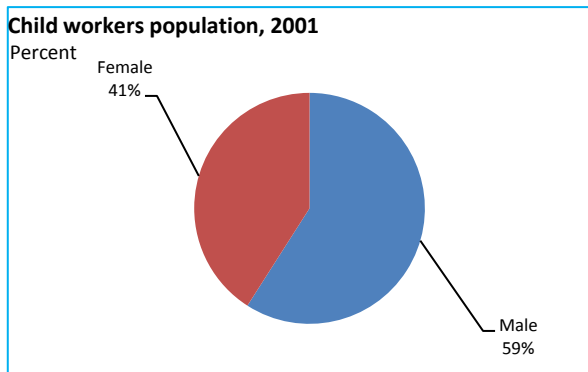


Source: DLHS, 2002-2004

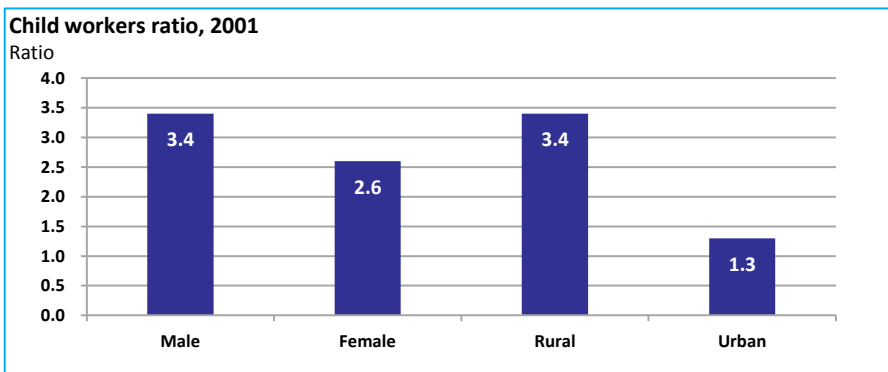


Source: DLHS

CHILD PROTECTION



Source: Census



ENVIRONMENT

Location/Caste	Total	Rural	Urban	SC	ST	Time Period
Households living in dilapidated houses (#)	12193	10544	1649	2936	2985	(2001)
Households without electricity (#)	50400	47294	3106	10179	12224	(2001)
Households without latrines (#)	146440	135041	11399	30266	27667	(2001)

Source: Census

Habitation with drinking water access					
<40 LPCD	40 to 55 LPCD	With 0 population coverage	With 100% population coverage	With population coverage > 0 and < 100%	Time Period
0	245	-	1257	-	(2009)

Source: IMIS

INFRASTRUCTURE

Proportion of villages having any health facility PHC/SHC/AYUSH (%)	15.3	(2001)	Proportion of villages having at least a primary school (%)	81.7	(2001)
---	------	--------	---	------	--------

Source: Census

