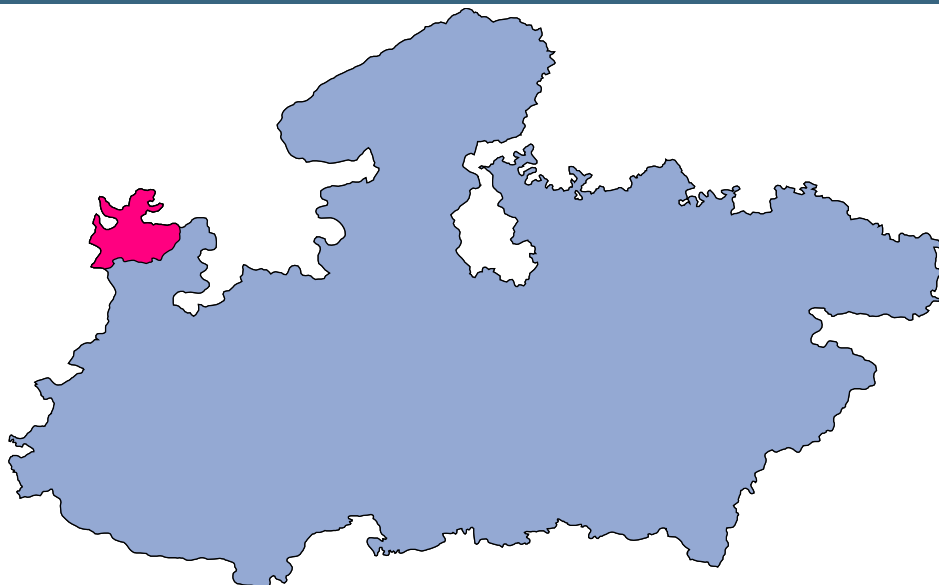




# Neemuch



## MONITORING XI PLAN GOALS



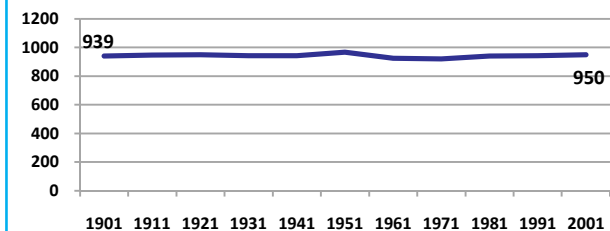
# Neemuch

## DEMOGRAPHICS

Location/Caste	Total	Rural	Urban	SC	ST	Non SC/ST	Time Period
Population size (000)	726	-	-	-	-	-	(2001)
Average annual population growth rate (%)	1.9	1.9	1.9	-	-	-	(2001)
Decadal growth rate (%)	21.3	-	-	-	-	-	(2001)
Population density (Persons per Sq Km)	171	-	-	-	-	-	(2001)
Sex ratio (Females per 1000 males)	950	959	926	962	933	950	(2001)
Sex ratio (0-6 years, Females per 1000 males)	931	935	921	950	901	834	(2001)
Level of urbanization (%)	28.0	-	-	-	-	-	(2001)

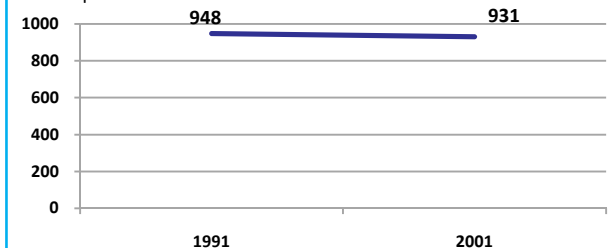
### Sex ratio

Females per 1000 males



### Sex ratio, 0-6 years

Females per 1000 males



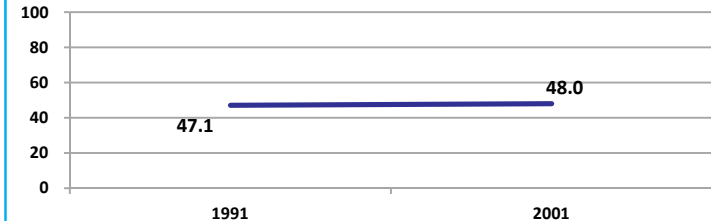
Source: Census

Source: Census

## ECONOMY

### Work participation rate

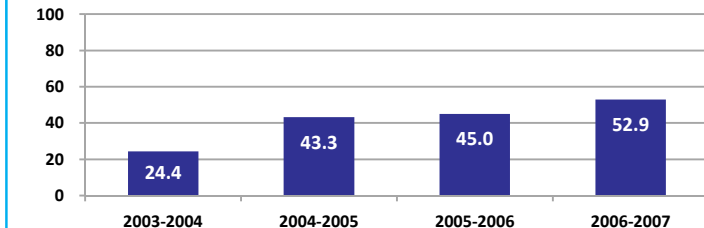
Percent



Source: Census

### Net sown area irrigated

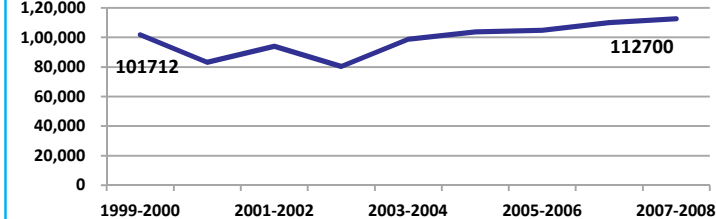
Percent



Source: Census, 2001 Projected

### Net District Domestic Product at constant (1990-2000) prices

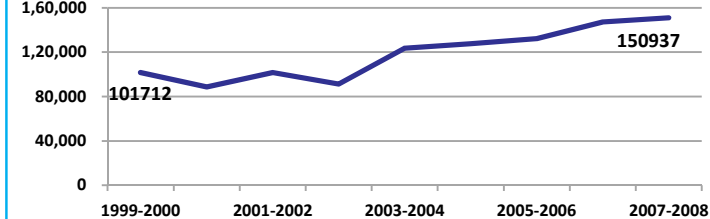
Lakhs



Source: DES, 2009

### Net District Domestic Product at current prices

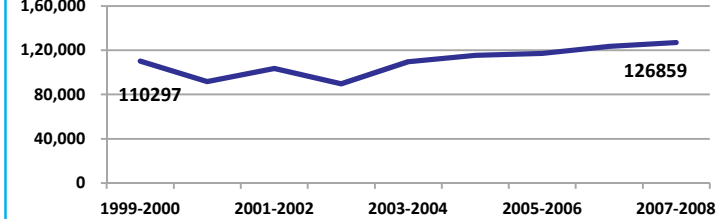
Lakhs



Source: DES, 2009

### Gross District Domestic Product at constant (1990-2000) prices

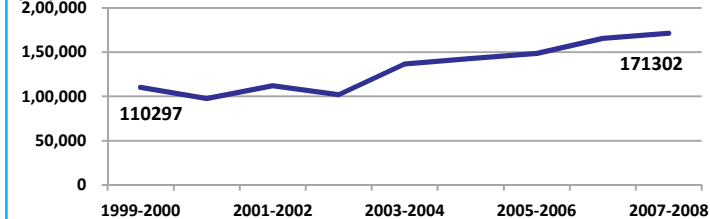
Lakhs



Source: DES, 2009

### Gross District Domestic Product at current prices

Lakhs



Source: DES, 2009



State Planning Commission



## Neemuch

### ECONOMY

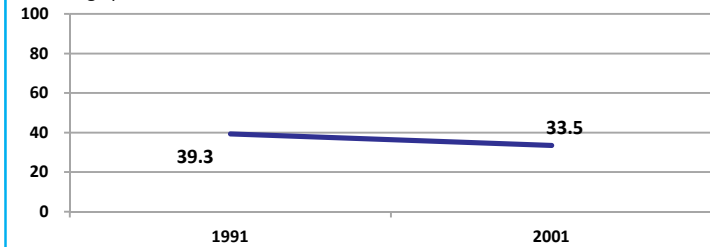
Location/Caste	Total	Rural	Urban	SC	ST	Non SC/ST	Time Period
Industrial working population (%)	377808	-	-	-	-	-	(2001)
Marginal working population (%)	9.1	-	-	-	-	-	(2001)
Main working population (%)	38.9	-	-	-	-	-	(2001)
Farmers and agricultural labour in population (%)	36.1	-	-	-	-	-	(2001)
Schedule caste population (%)	12.5	12.7	12.1	-	-	-	(2001)
Schedule tribe population (%)	8.5	10.4	3.6	-	-	-	(2001)
Households having none of the six household assets (Radio/Transistor, Television, Telephone, Bicycle, Two wheeler, Four wheeler) (#)	35540	30550	4990	6204	6593	-	(2001)

Source: Census

### EDUCATION

#### Gender gap in literacy rate (Male-Female)

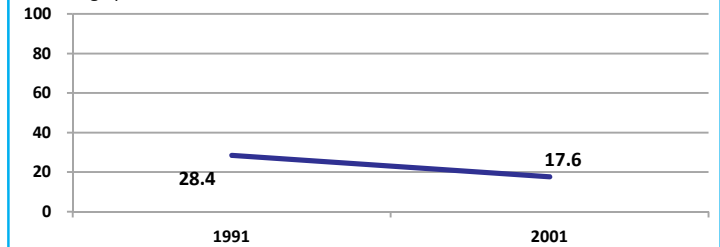
Percentage points



Source: Census

#### Gap in literacy rate by residence (Urban-Rural)

Percentage points



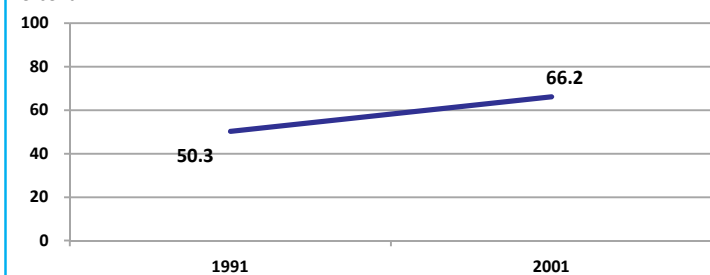
Source: Census

Location/Sex/Caste	Total	Male	Female	Rural	Urban	SC	ST	Time Period
Primary gross enrolment ratio **	107.8	107.9	107.7	-	-	-	-	(2008-2009)
Upper primary gross enrolment ratio **	104.6	104.9	104.3	-	-	-	-	(2008-2009)
Elementary gross enrolment ratio **	107.0	107.1	106.8	-	-	-	-	(2008-2009)
Primary dropout rate (%) **	-	6.9	6.2	-	-	-	-	(2008-2009)
Ratio of literate women to men (15-24 years) *	0.7	-	-	0.6	0.8	0.6	0.4	(2001)
Persons age 15+ completed primary education (%) *	46.1	63.2	28.3	37.5	67.2	9.7	12.9	(2001)

Source: Census \*/Rajya Shiksha Kendra \*\*

#### Literacy rate 7+

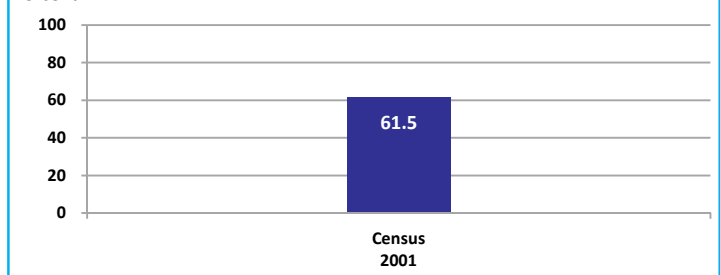
Percent



Source: Census

#### Literacy rate 15+

Percent

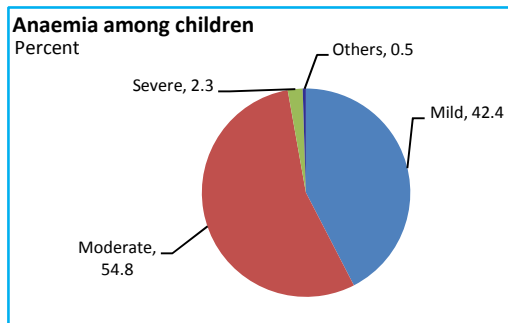


## Neemuch

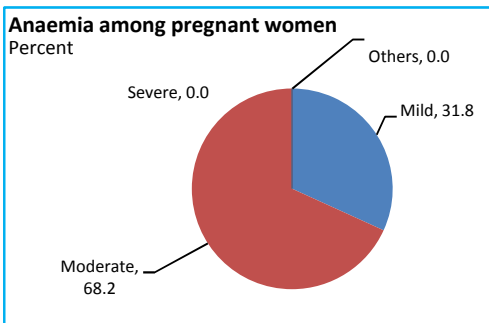
### HEALTH & NUTRITION

Contraceptive prevalence rate (15-44 yr)	51.4	Fully immunized children (12-23 months)	42.5	Prevalence of underweight (moderate and severe, <6 yr)	61.6
--	------	---	------	--	------

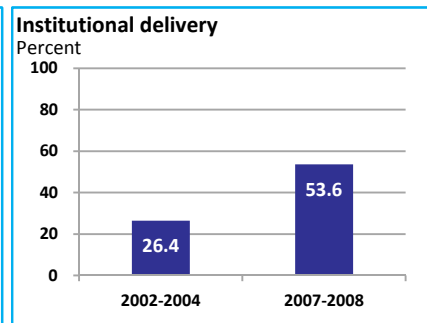
Source: DLHS, 2002-2004



Source: DLHS, 2002-2004

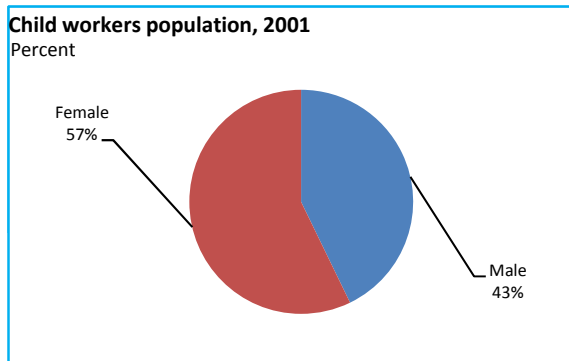


Source: DLHS, 2002-2004

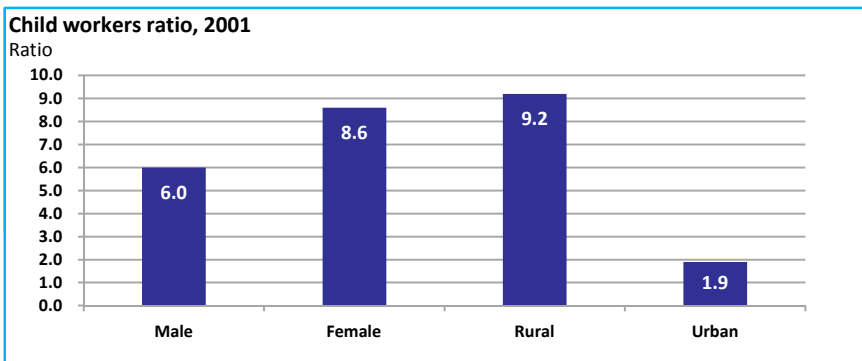


Source: DLHS

### CHILD PROTECTION



Source: Census



### ENVIRONMENT

Location/Caste	Total	Rural	Urban	SC	ST	Time Period
Households living in dilapidated houses (#)	2318	1568	750	486	700	(2001)
Households without electricity (#)	13007	11689	1318	1745	2537	(2001)
Households without latrines (#)	107131	92062	15069	17140	12416	(2001)

Source: Census

**Habitation with drinking water access**

<40 LPCD	40 to 55 LPCD	With 0 population coverage	With 100% population coverage	With population coverage > 0 and < 100%	Time Period
0	250	-	370	-	(2009)

Source: IMIS

### INFRASTRUCTURE

Proportion of villages having any health facility PHC/SHC/AYUSH (%)	20.8	(2001)	Proportion of villages having at least a primary school (%)	72.2	(2001)
---	------	--------	---	------	--------

Source: Census

