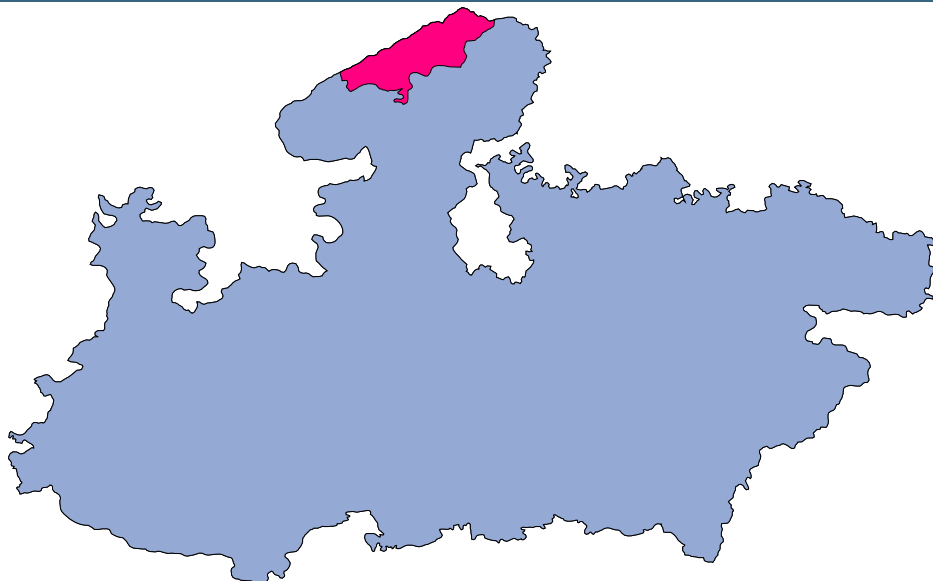




Morena



MONITORING XI PLAN GOALS



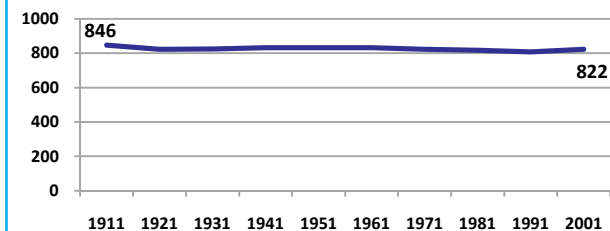
Morena

DEMOGRAPHICS

Location/Caste	Total	Rural	Urban	SC	ST	Non SC/ST	Time Period
Population size (000)	1593	-	-	-	-	-	(2001)
Average annual population growth rate (%)	2.2	2.3	1.7	-	-	-	(2001)
Decadal growth rate (%)	24.5	-	-	-	-	-	(2001)
Population density (Persons per Sq Km)	319	-	-	-	-	-	(2001)
Sex ratio (Females per 1000 males)	822	817	842	817	894	822	(2001)
Sex ratio (0-6 years, Females per 1000 males)	837	839	830	979	955	896	(2001)
Level of urbanization (%)	21.6	-	-	-	-	-	(2001)

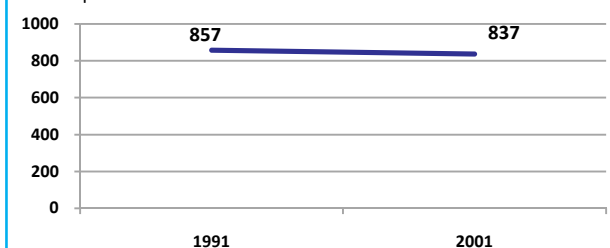
Sex ratio

Females per 1000 males



Sex ratio, 0-6 years

Females per 1000 males



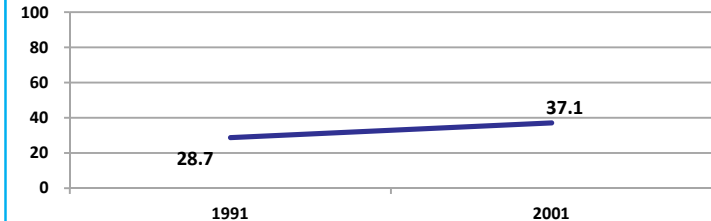
Source: Census

Source: Census

ECONOMY

Work participation rate

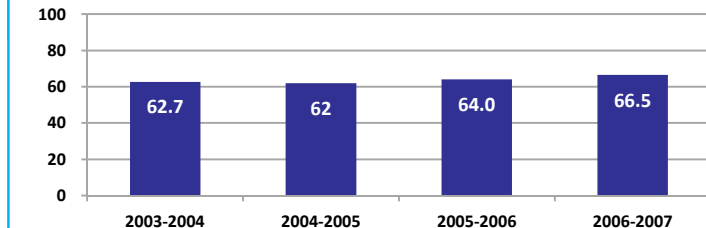
Percent



Source: Census

Net sown area irrigated

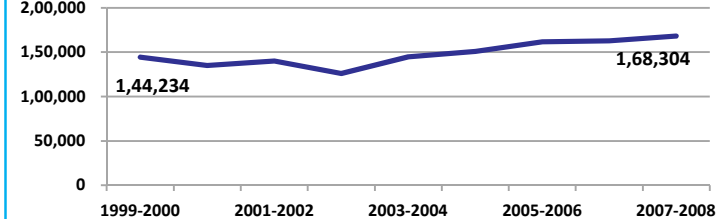
Percent



Source: Census, 2001 Projected

Net District Domestic Product at constant (1990-2000) prices

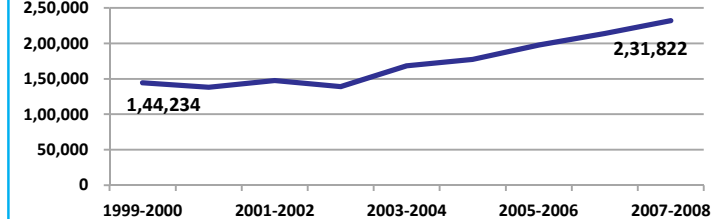
Lakhs



Source: DES, 2009

Net District Domestic Product at current prices

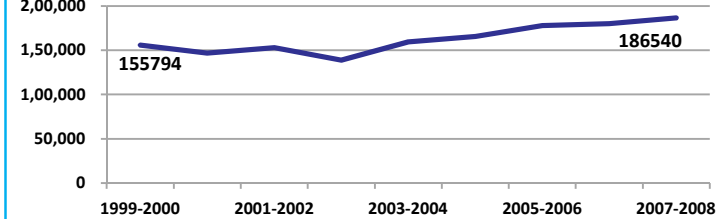
Lakhs



Source: DES, 2009

Gross District Domestic Product at constant (1990-2000) prices

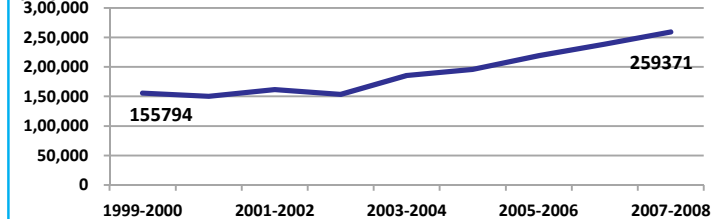
Lakhs



Source: DES, 2009

Gross District Domestic Product at current prices

Lakhs



Source: DES, 2009



Morena

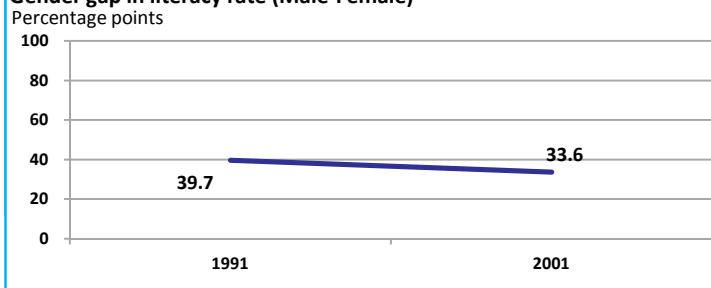
ECONOMY

Location/Caste	Total	Rural	Urban	SC	ST	Non SC/ST	Time Period
Industrial working population (%)	1002115	-	-	-	-	-	(2001)
Marginal working population (%)	8.7	-	-	-	-	-	(2001)
Main working population (%)	28.3	-	-	-	-	-	(2001)
Farmers and agricultural labour in population (%)	25.3	-	-	-	-	-	(2001)
Schedule caste population (%)	21.1	21.3	20.3	-	-	-	(2001)
Schedule tribe population (%)	0.8	0.9	0.4	-	-	-	(2001)
Households having none of the six household assets (Radio/Transistor, Television, Telephone, Bicycle, Two wheeler, Four wheeler) (#)	98484	87244	11240	26612	1923	-	(2001)

Source: Census

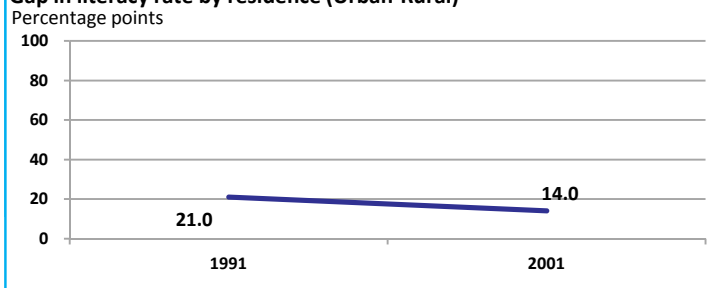
EDUCATION

Gender gap in literacy rate (Male-Female)



Source: Census

Gap in literacy rate by residence (Urban-Rural)

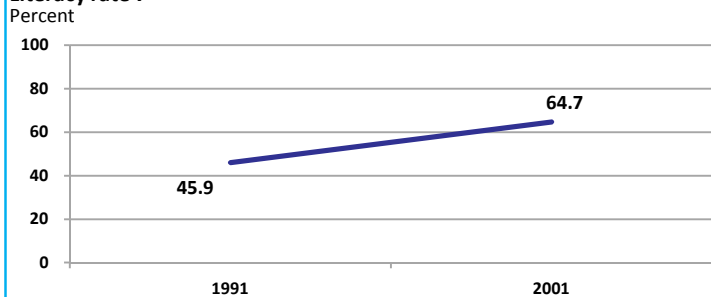


Source: Census

Location/Sex/Caste	Total	Male	Female	Rural	Urban	SC	ST	Time Period
Primary gross enrolment ratio **	115.4	115.6	115.3	-	-	-	-	(2008-2009)
Upper primary gross enrolment ratio **	106.7	106.4	107.1	-	-	-	-	(2008-2009)
Elementary gross enrolment ratio **	112.8	112.9	112.8	-	-	-	-	(2008-2009)
Primary dropout rate (%) **	-	10.2	10.2	-	-	-	-	(2008-2009)
Ratio of literate women to men (15-24 years) *	0.4	-	-	0.4	0.6	0.3	0.3	(2001)
Persons age 15+ completed primary education (%) *	48.2	66.0	26.7	43.3	65.1	8.3	42.3	(2001)

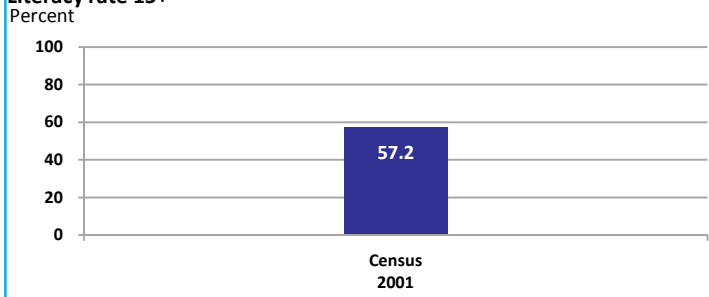
Source: Census */Rajya Shiksha Kendra **

Literacy rate 7+



Source: Census

Literacy rate 15+

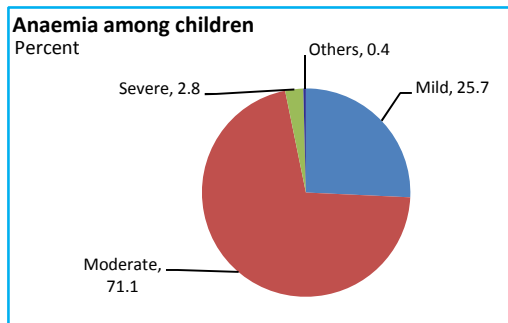


Morena

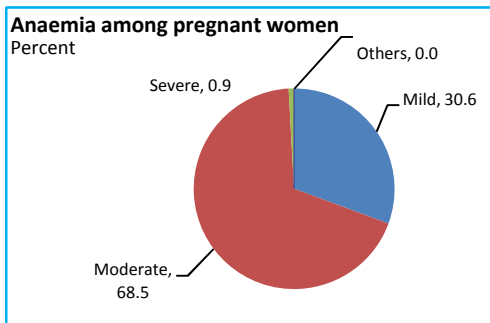
HEALTH & NUTRITION

Contraceptive prevalence rate (15-44 yr)	44.0	Fully immunized children (12-23 months)	32.2	Prevalence of underweight (moderate and severe, <6 yr)	46.6
--	------	---	------	--	------

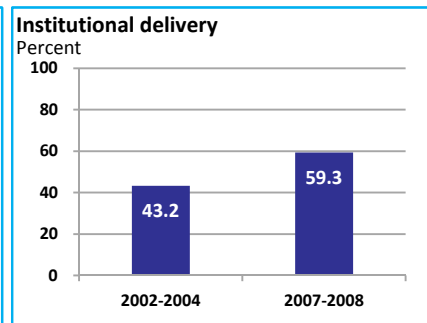
Source: DLHS, 2002-2004



Source: DLHS, 2002-2004

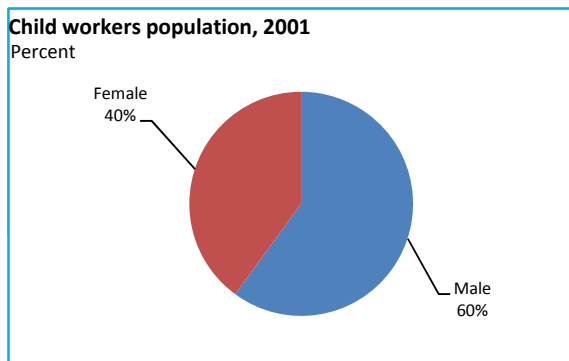


Source: DLHS, 2002-2004

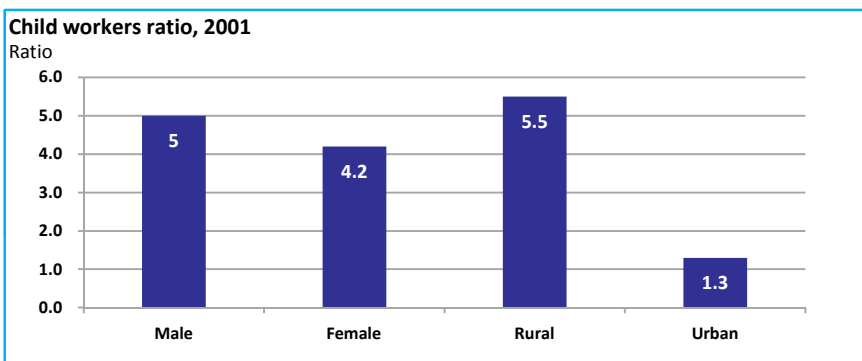


Source: DLHS

CHILD PROTECTION



Source: Census



ENVIRONMENT

Location/Caste	Total	Rural	Urban	SC	ST	Time Period
Households living in dilapidated houses (#)	9957	8773	1184	2922	460	(2001)
Households without electricity (#)	108339	103291	5048	26188	1571	(2001)
Households without latrines (#)	191344	174571	16773	49323	2429	(2001)

Source: Census

Habitation with drinking water access

<40 LPCD	40 to 55 LPCD	With 0 population coverage	With 100% population coverage	With population coverage > 0 and < 100%	Time Period
5	185	-	3193	-	(2009)

Source: IMIS

INFRASTRUCTURE

Proportion of villages having any health facility PHC/SHC/AYUSH (%)	45.2	(2001)	Proportion of villages having at least a primary school (%)	90.4	(2001)
---	------	--------	---	------	--------

Source: Census

