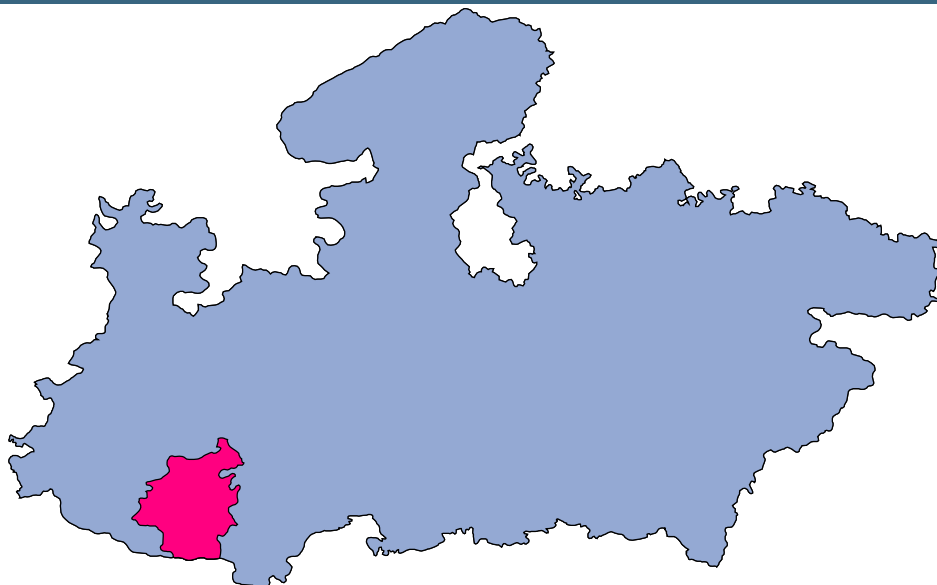




# Khargone



MONITORING XI PLAN GOALS



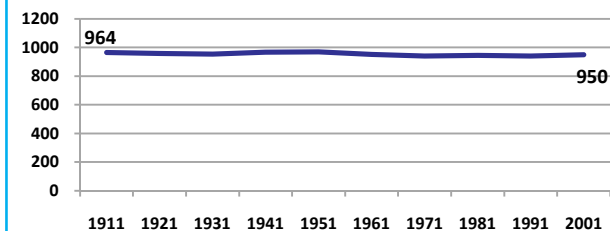
## Khargone

### DEMOGRAPHICS

Location/Caste	Total	Rural	Urban	SC	ST	Non SC/ST	Time Period
Population size (000)	1530	-	-	-	-	-	(2001)
Average annual population growth rate (%)	2.5	2.4	2.8	-	-	-	(2001)
Decadal growth rate (%)	27.9	-	-	-	-	-	(2001)
Population density (Persons per Sq Km)	190	-	-	-	-	-	(2001)
Sex ratio (Females per 1000 males)	950	954	927	941	976	932	(2001)
Sex ratio (0-6 years, Females per 1000 males)	962	968	918	943	932	870	(2001)
Level of urbanization (%)	15.4	-	-	-	-	-	(2001)

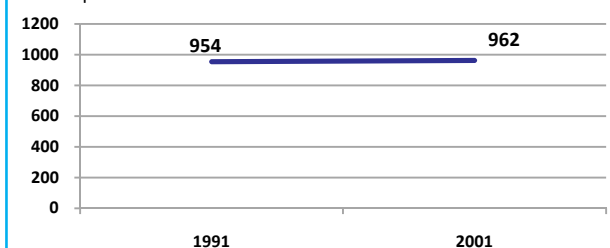
#### Sex ratio

Females per 1000 males



#### Sex ratio, 0-6 years

Females per 1000 males



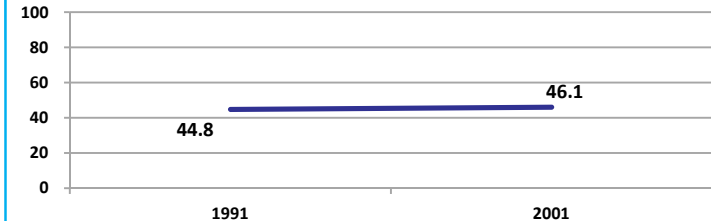
Source: Census

Source: Census

### ECONOMY

#### Work participation rate

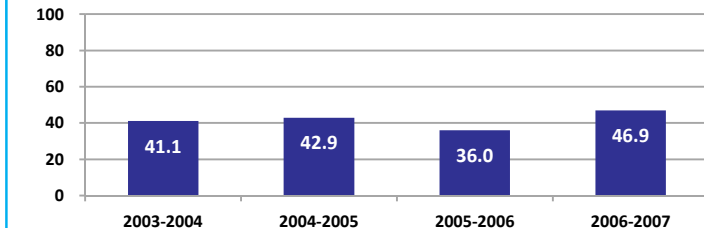
Percent



Source: Census

#### Net sown area irrigated

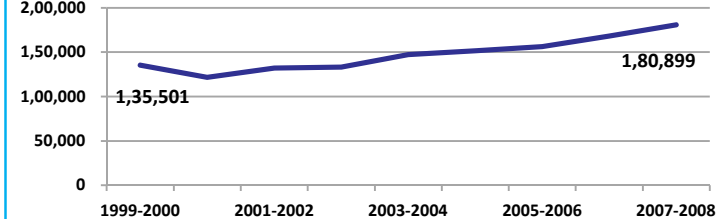
Percent



Source: Census, 2001 Projected

#### Net District Domestic Product at constant (1990-2000) prices

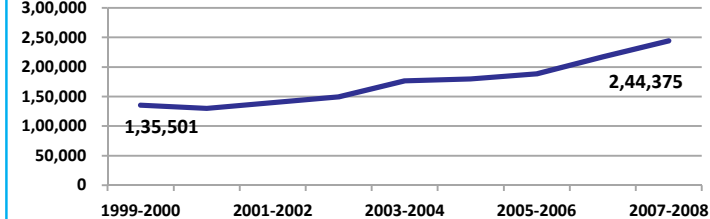
Lakhs



Source: DES, 2009

#### Net District Domestic Product at current prices

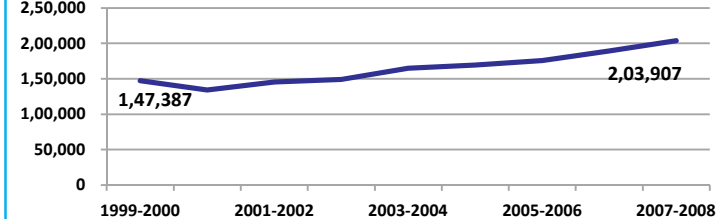
Lakhs



Source: DES, 2009

#### Gross District Domestic Product at constant (1990-2000) prices

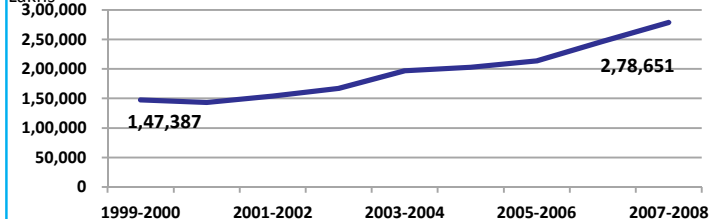
Lakhs



Source: DES, 2009

#### Gross District Domestic Product at current prices

Lakhs



Source: DES, 2009



## Khargone

### ECONOMY

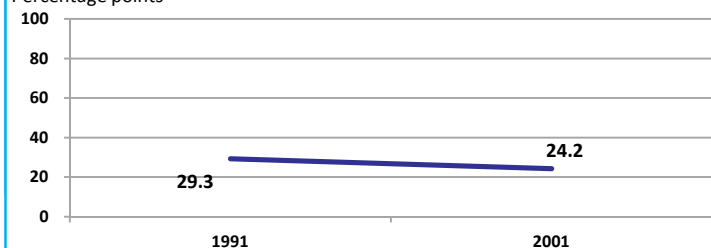
Location/Caste	Total	Rural	Urban	SC	ST	Non SC/ST	Time Period
Industrial working population (%)	825123	-	-	-	-	-	(2001)
Marginal working population (%)	7.5	-	-	-	-	-	(2001)
Main working population (%)	38.5	-	-	-	-	-	(2001)
Farmers and agricultural labour in population (%)	37.6	-	-	-	-	-	(2001)
Schedule caste population (%)	11.4	11.7	9.8	-	-	-	(2001)
Schedule tribe population (%)	35.5	40.4	8.4	-	-	-	(2001)
Households having none of the six household assets (Radio/Transistor, Television, Telephone, Bicycle, Two wheeler, Four wheeler) (#)	138084	127828	10256	20900	61661	-	(2001)

Source: Census

### EDUCATION

#### Gender gap in literacy rate (Male-Female)

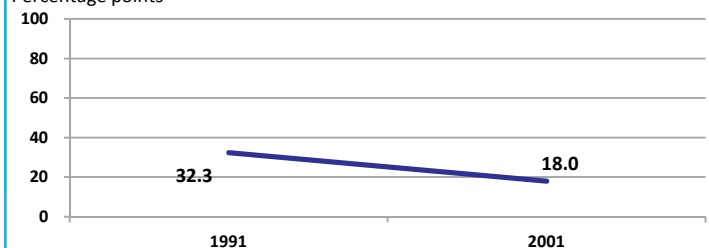
Percentage points



Source: Census

#### Gap in literacy rate by residence (Urban-Rural)

Percentage points



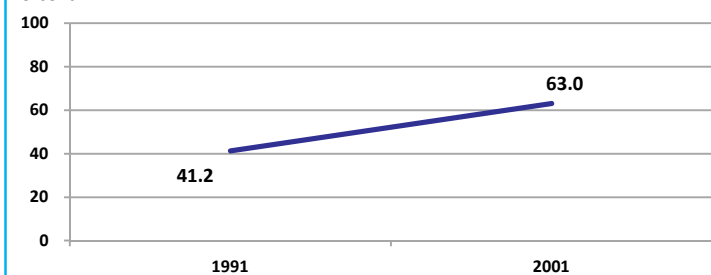
Source: Census

Location/Sex/Caste	Total	Male	Female	Rural	Urban	SC	ST	Time Period
Primary gross enrolment ratio **	105.3	105.2	105.5	-	-	-	-	(2008-2009)
Upper primary gross enrolment ratio **	81.7	81.9	81.5	-	-	-	-	(2008-2009)
Elementary gross enrolment ratio **	98.5	98.3	98.8	-	-	-	-	(2008-2009)
Primary dropout rate (%) **	-	19.0	18.7	-	-	-	-	(2008-2009)
Ratio of literate women to men (15-24 years) *	0.7	-	-	0.6	0.8	0.6	0.6	(2001)
Persons age 15+ completed primary education (%) *	38.0	50.6	24.7	32.7	64.3	9.0	11.6	(2001)

Source: Census \*/Rajya Shiksha Kendra \*\*

#### Literacy rate 7+

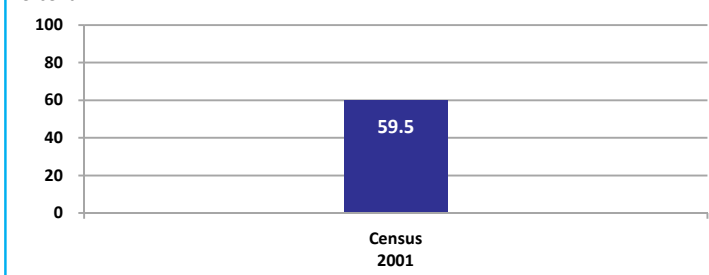
Percent



Source: Census

#### Literacy rate 15+

Percent

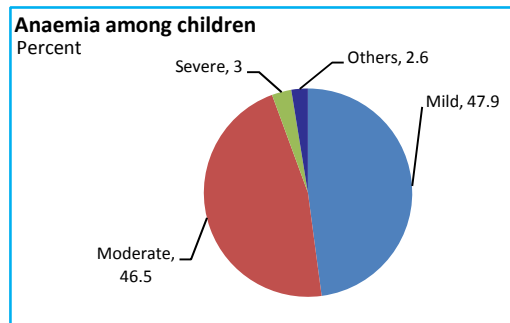


## Khargone

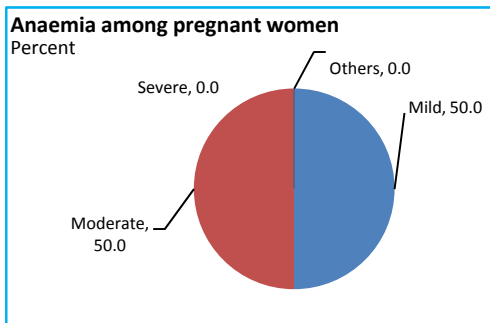
### HEALTH & NUTRITION

Contraceptive prevalence rate (15-44 yr)	60.7	Fully immunized children (12-23 months)	20.4	Prevalence of underweight (moderate and severe, <6 yr)	61.9
------------------------------------------	------	-----------------------------------------	------	--------------------------------------------------------	------

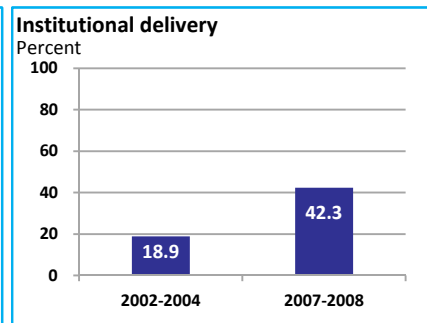
Source: DLHS, 2002-2004



Source: DLHS, 2002-2004

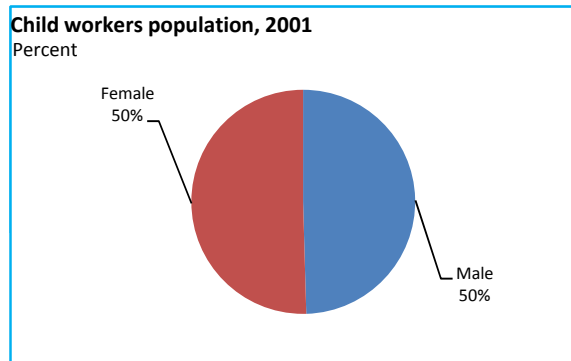


Source: DLHS, 2002-2004

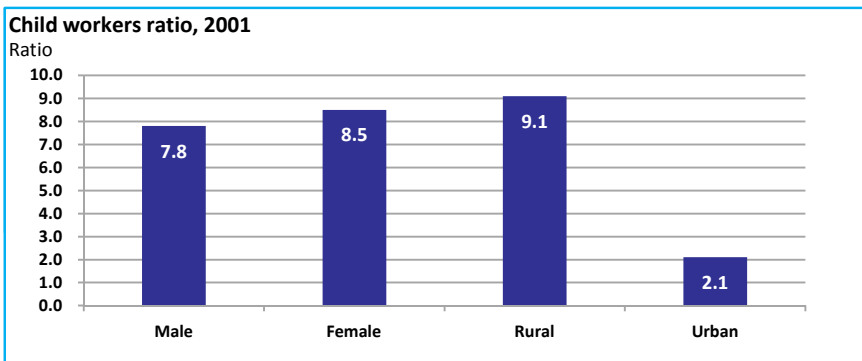


Source: DLHS

### CHILD PROTECTION



Source: Census



### ENVIRONMENT

Location/Caste	Total	Rural	Urban	SC	ST	Time Period
Households living in dilapidated houses (#)	11942	10343	1599	2353	4304	(2001)
Households without electricity (#)	41767	39589	2178	3957	28401	(2001)
Households without latrines (#)	220696	205425	15271	32995	85426	(2001)

Source: Census

**Habitation with drinking water access**

<40 LPCD	40 to 55 LPCD	With 0 population coverage	With 100% population coverage	With population coverage > 0 and < 100%	Time Period
0	350	-	598	-	(2009)

Source: IMIS

### INFRASTRUCTURE

Proportion of villages having any health facility PHC/SHC/AYUSH (%)	26.4	(2001)	Proportion of villages having at least a primary school (%)	77.0	(2001)
---------------------------------------------------------------------	------	--------	-------------------------------------------------------------	------	--------

Source: Census

