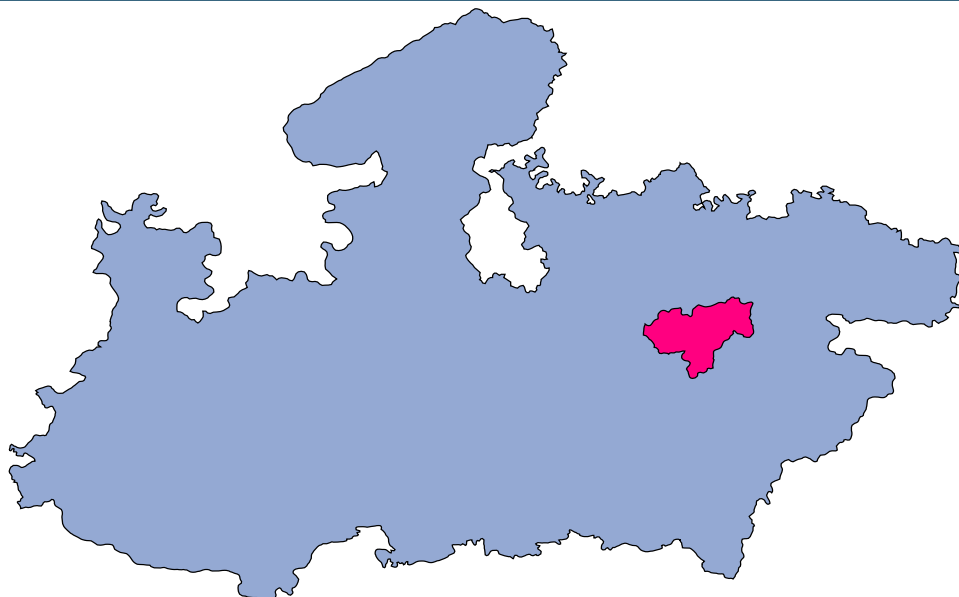




Katni



MONITORING XI PLAN GOALS



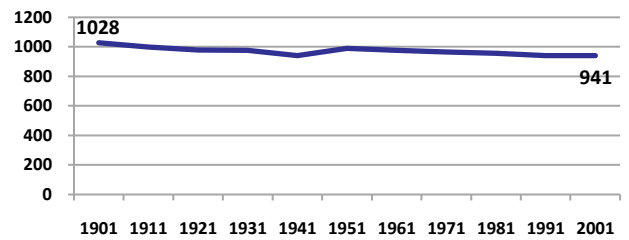
Katni

DEMOGRAPHICS

Location/Caste	Total	Rural	Urban	SC	ST	Non SC/ST	Time Period
Population size (000)	1064	-	-	-	-	-	(2001)
Average annual population growth rate (%)	1.9	2.0	1.3	-	-	-	(2001)
Decadal growth rate (%)	20.7	-	-	-	-	-	(2001)
Population density (Persons per Sq Km)	215	-	-	-	-	-	(2001)
Sex ratio (Females per 1000 males)	941	950	908	954	981	925	(2001)
Sex ratio (0-6 years, Females per 1000 males)	952	960	908	929	959	882	(2001)
Level of urbanization (%)	21.2	-	-	-	-	-	(2001)

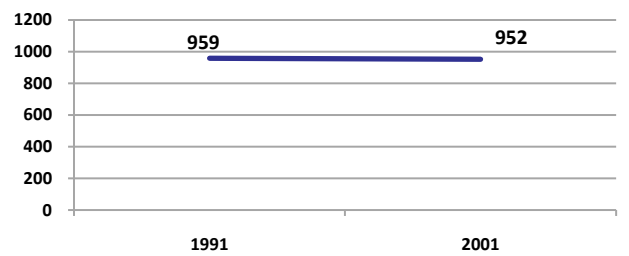
Sex ratio

Females per 1000 males



Sex ratio, 0-6 years

Females per 1000 males



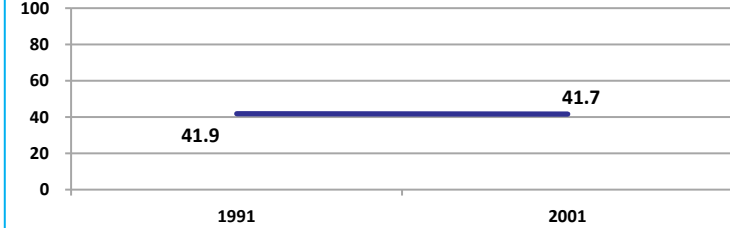
Source: Census

Source: Census

ECONOMY

Work participation rate

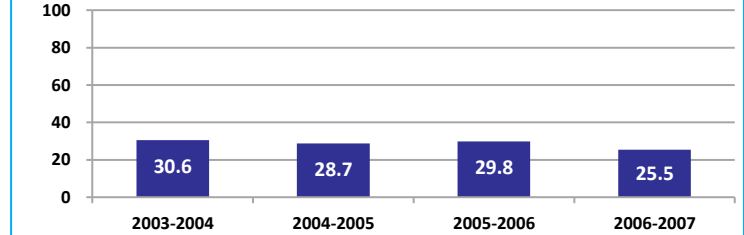
Percent



Source: Census

Net sown area irrigated

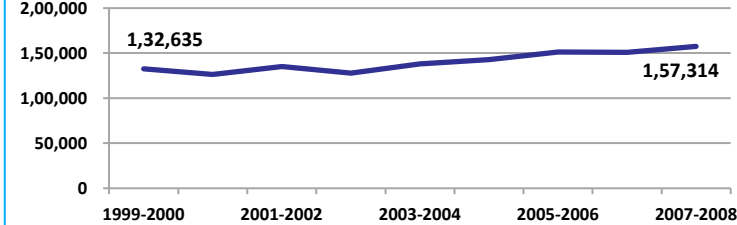
Percent



Source: Census, 2001 Projected

Net district domestic product at constant (1990-2000) prices

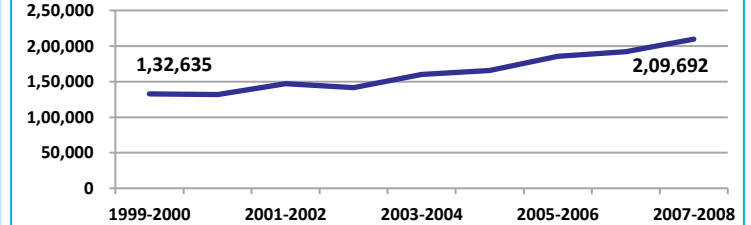
Lakhs



Source: DES, 2009

Net district domestic product at current prices

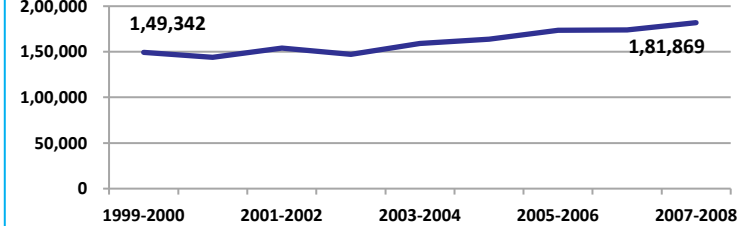
Lakhs



Source: DES, 2009

Gross district domestic Product at constant (1990-2000) prices

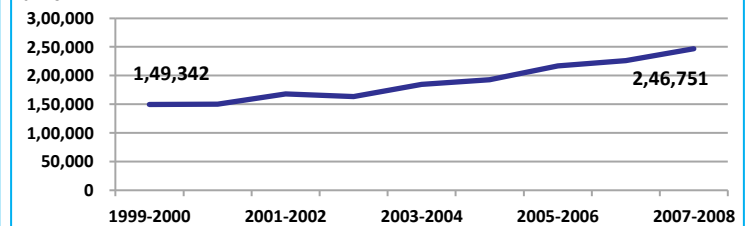
Lakhs



Source: DES, 2009

Gross district domestic product at current prices

Lakhs



Source: DES, 2009



State Planning Commission



Katni

ECONOMY

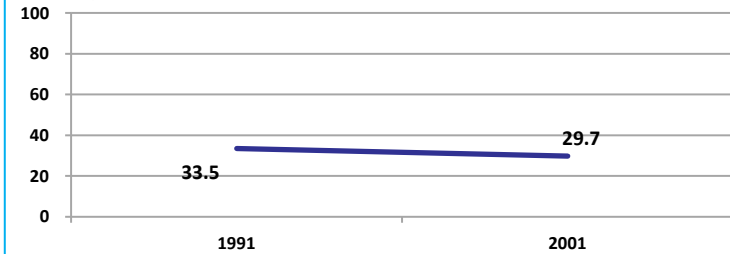
Location/Caste	Total	Rural	Urban	SC	ST	Non SC/ST	Time Period
Industrial working population (%)	620472	-	-	-	-	-	(2001)
Marginal working population (%)	14.0	-	-	-	-	-	(2001)
Main working population (%)	27.7	-	-	-	-	-	(2001)
Farmers and agricultural labour in population (%)	26.3	-	-	-	-	-	(2001)
Schedule caste population (%)	11.5	11.5	11.4	-	-	-	(2001)
Schedule tribe population (%)	23.1	27.1	8.0	-	-	-	(2001)
Households having none of the six household assets (Radio/Transistor, Television, Telephone, Bicycle, Two wheeler, Four wheeler) (#)	96393	88098	8295	13515	35216	-	(2001)

Source: Census

EDUCATION

Gender gap in literacy rate (Male-Female)

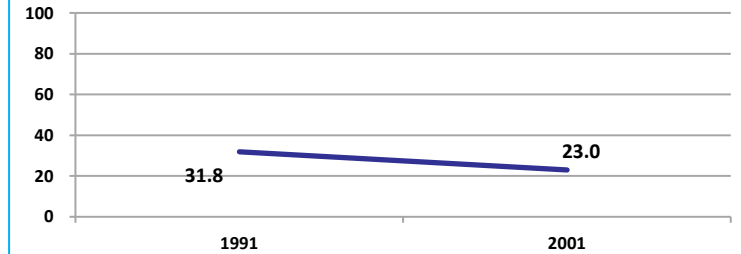
Percentage points



Source: Census

Gap in literacy rate by residence (Urban-Rural)

Percentage points



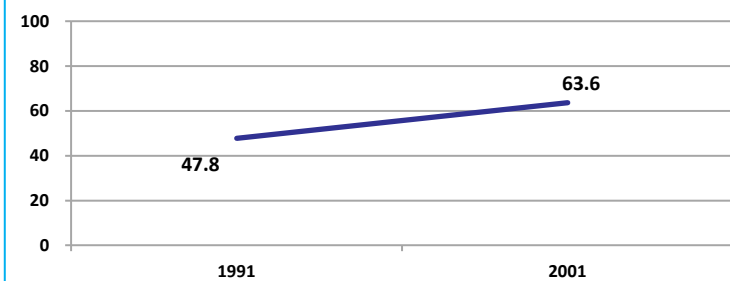
Source: Census

Location/Sex/Caste	Total	Male	Female	Rural	Urban	SC	ST	Time Period
Primary gross enrolment ratio **	108.8	108.2	109.5	-	-	-	-	(2008-2009)
Upper primary gross enrolment ratio **	102.4	103.8	100.9	-	-	-	-	(2008-2009)
Elementary gross enrolment ratio **	106.9	106.8	106.9	-	-	-	-	(2008-2009)
Primary dropout rate (%) **	-	10.3	11.4	-	-	-	-	(2008-2009)
Ratio of literate women to men (15-24 years) *	0.7	-	-	0.6	0.8	0.6	0.5	(2001)
Persons age 15+ completed primary education (%) *	45.9	60.0	30.9	38.1	72.1	22.4	11.7	(2001)

Source: Census */Rajya Shiksha Kendra **

Literacy rate 7+

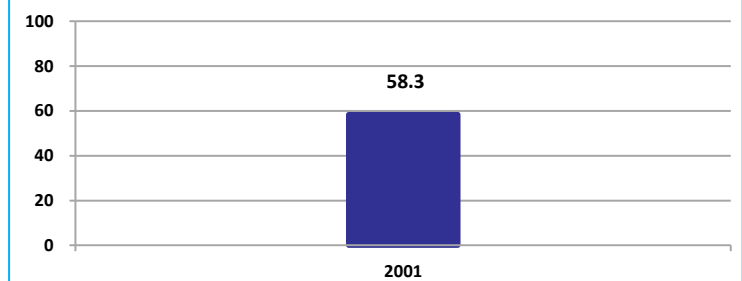
Percent



Source: Census

Literacy rate 15+

Percent



Source: Census

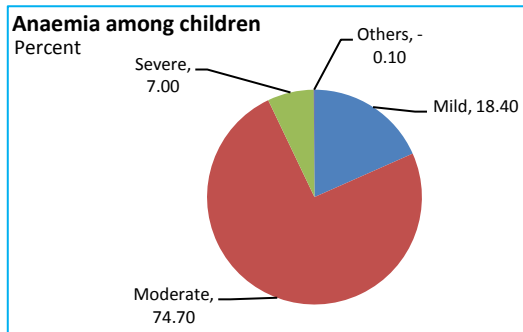


Katni

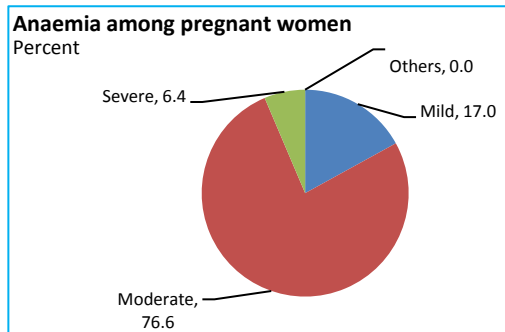
HEALTH & NUTRITION

Contraceptive prevalence rate (15-44 yr)	45.9	Fully immunized children (12-23 months)	36.9	Prevalence of underweight (moderate and severe, <6 yr)	57.3
--	------	---	------	--	------

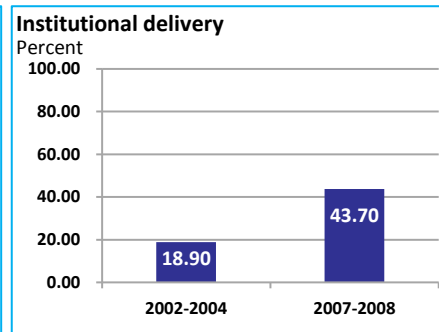
Source: DLHS, 2002-2004



Source: DLHS, 2002-2004

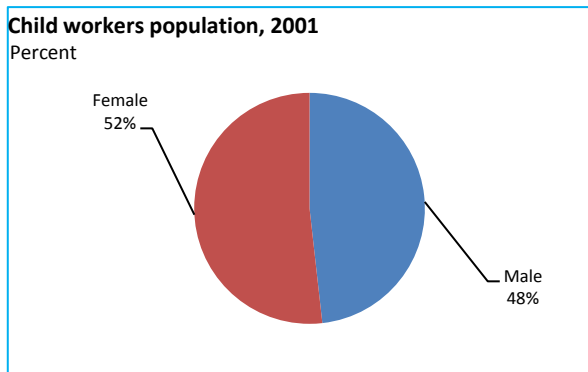


Source: DLHS, 2002-2004

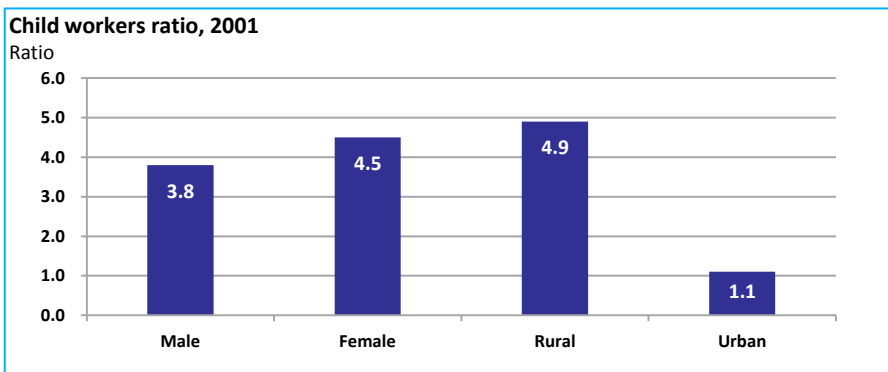


Source: DLHS

CHILD PROTECTION



Source: Census



ENVIRONMENT

Location/Caste	Total	Rural	Urban	SC	ST	Time Period
Households living in dilapidated houses (#)	7302	6290	1012	1036	2485	(2001)
Households without electricity (#)	81937	77011	4926	10356	29034	(2001)
Households without latrines (#)	184507	167624	16883	26095	54113	(2001)

Source: Census

Habitation with drinking water access					
<40 LPCD	40 to 55 LPCD	With 0 population coverage	With 100% population coverage	With population coverage > 0 and < 100%	Time Period
0	100	-	221	-	(2009)

Source: IMIS

INFRASTRUCTURE

Proportion of villages having any health facility PHC/SHC/AYUSH (%)	29.3	(2001)	Proportion of villages having at least a primary school (%)	82.1	(2001)
---	------	--------	---	------	--------

Source: Census

