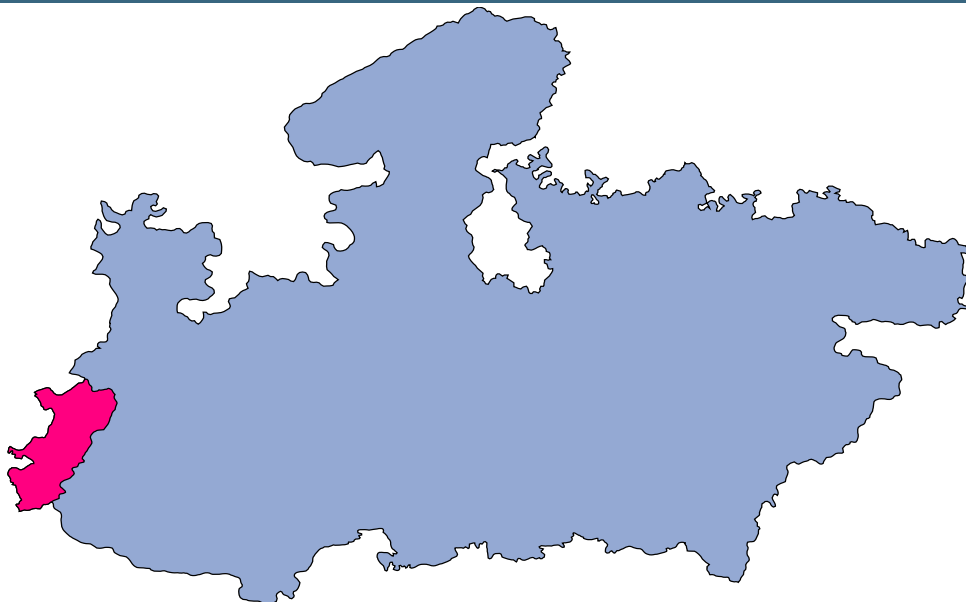




# Jhabua



## MONITORING XI PLAN GOALS

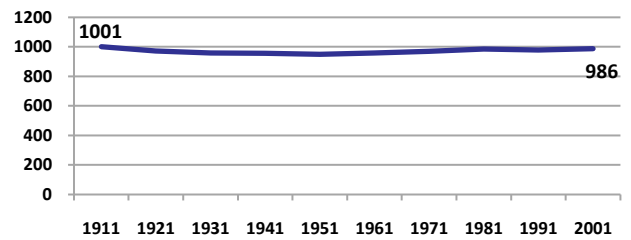


## Jhabua

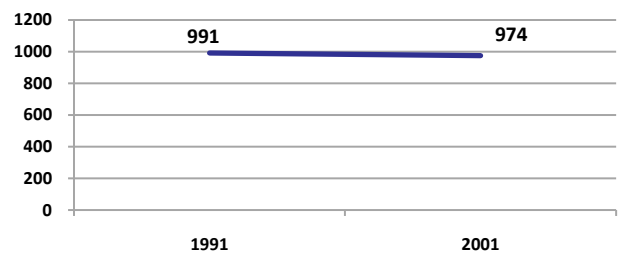
### DEMOGRAPHICS

Location/Caste	Total	Rural	Urban	SC	ST	Non SC/ST	Time Period
Population size (000)	1395	-	-	-	-	-	(2001)
Average annual population growth rate (%)	2.1	2.1	2.1	-	-	-	(2001)
Decadal growth rate (%)	23.4	-	-	-	-	-	(2001)
Population density (Persons per Sq Km)	206	-	-	-	-	-	(2001)
Sex ratio (Females per 1000 males)	986	992	927	968	993	973	(2001)
Sex ratio (0-6 years, Females per 1000 males)	974	977	932	958	925	845	(2001)
Level of urbanization (%)	8.7	-	-	-	-	-	(2001)

**Sex ratio**  
Females per 1000 males



**Sex ratio, 0-6 years**  
Females per 1000 males

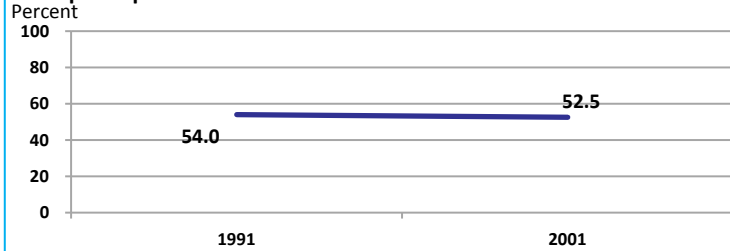


Source: Census

Source: Census

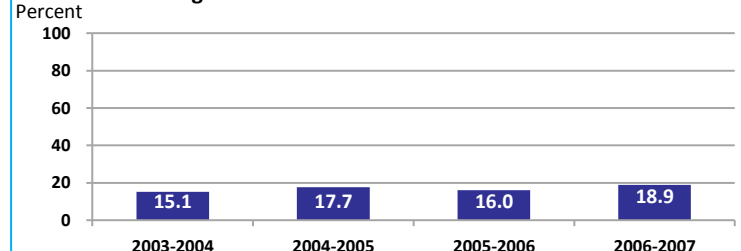
### ECONOMY

**Work participation rate**



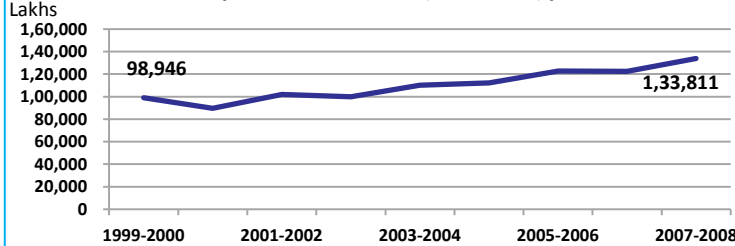
Source: Census

**Net sown area irrigated**



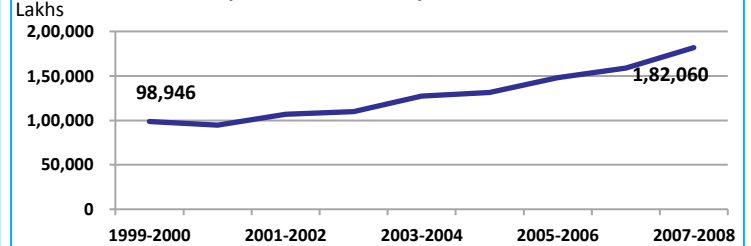
Source: Census, 2001 Projected

**Net district domestic product at constant (1990-2000) prices**



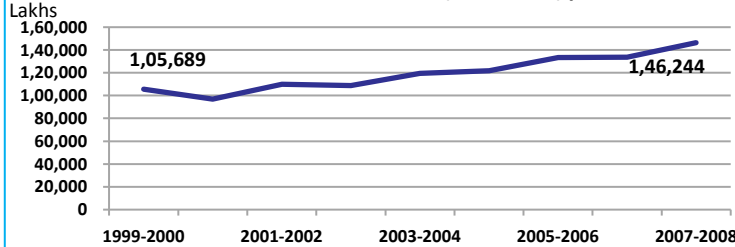
Source: DES, 2009

**Net district domestic product at current prices**



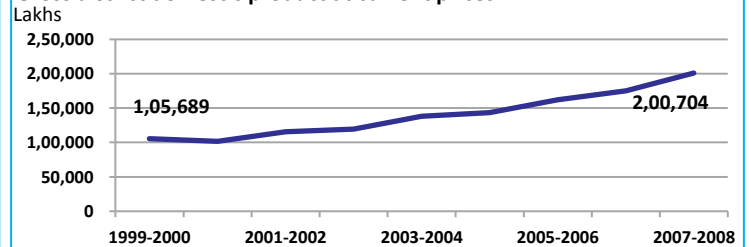
Source: DES, 2009

**Gross district domestic Product at constant (1990-2000) prices**



Source: DES, 2009

**Gross district domestic product at current prices**



Source: DES, 2009



State Planning Commission



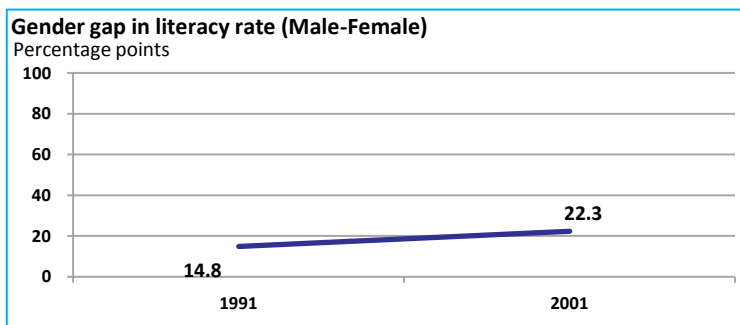
## Jhabua

### ECONOMY

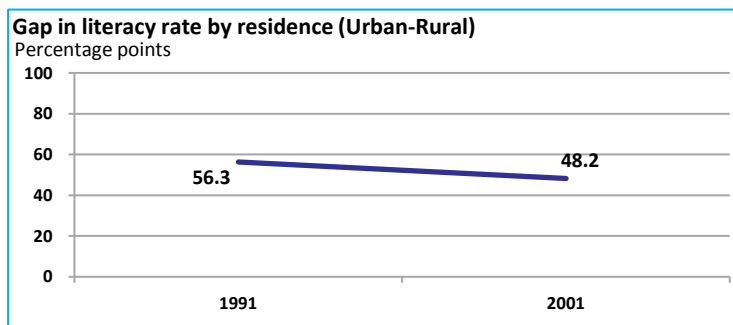
Location/Caste	Total	Rural	Urban	SC	ST	Non SC/ST	Time Period
Industrial working population (%)	662315	-	-	-	-	-	(2001)
Marginal working population (%)	17.6	-	-	-	-	-	(2001)
Main working population (%)	34.9	-	-	-	-	-	(2001)
Farmers and agricultural labour in population (%)	45.8	-	-	-	-	-	(2001)
Schedule caste population (%)	2.8	2.5	6.2	-	-	-	(2001)
Schedule tribe population (%)	86.8	92.2	31.0	-	-	-	(2001)
Households having none of the six household assets (Radio/Transistor, Television, Telephone, Bicycle, Two wheeler, Four wheeler) (#)	156224	151269	4955	4978	145575	-	(2001)

Source: Census

### EDUCATION



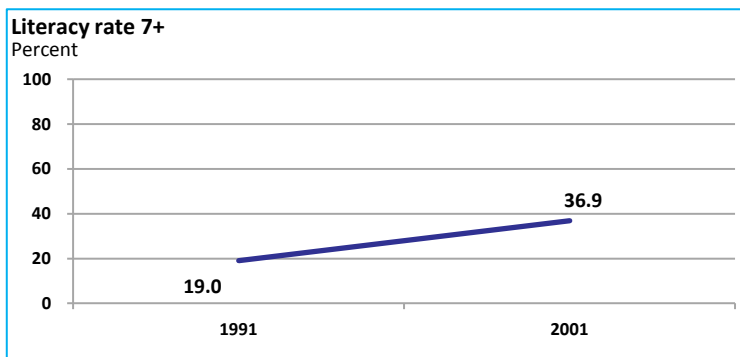
Source: Census



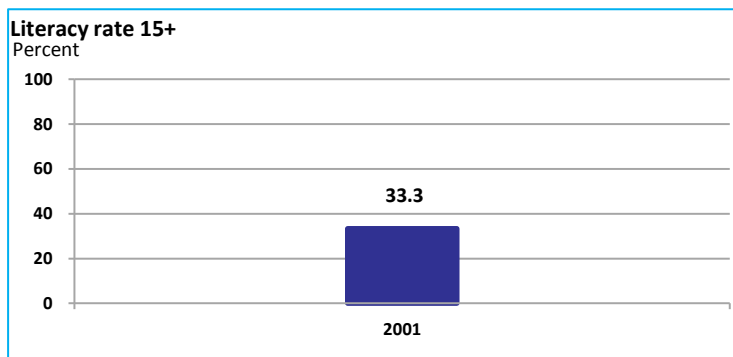
Source: Census

Location/Sex/Caste	Total	Male	Female	Rural	Urban	SC	ST	Time Period
Primary gross enrolment ratio **	94.9	95.4	94.4	-	-	-	-	(2008-2009)
Upper primary gross enrolment ratio **	92.2	92.9	91.5	-	-	-	-	(2008-2009)
Elementary gross enrolment ratio **	94.3	94.8	93.7	-	-	-	-	(2008-2009)
Primary dropout rate (%) **	-	27.6	33.9	-	-	-	-	(2008-2009)
Ratio of literate women to men (15-24 years) *	0.6	-	-	0.5	0.8	0.6	0.5	(2001)
Persons age 15+ completed primary education (%) *	19.9	27.8	12.1	14.1	70.4	21.3	10.1	(2001)

Source: Census \*/Rajya Shiksha Kendra \*\*



Source: Census



Source: Census



## Jhabua

### HEALTH & NUTRITION

Contraceptive prevalence rate (15-44 yr)	39.2	Fully immunized children (12-23 months)	20.6	Prevalence of underweight (moderate and severe, <6 yr)	65.5
--	------	---	------	--	------

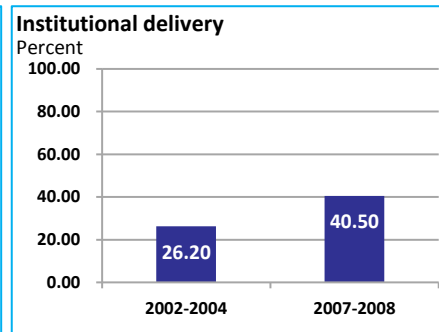
Source: DLHS, 2002-2004



Source: DLHS, 2002-2004

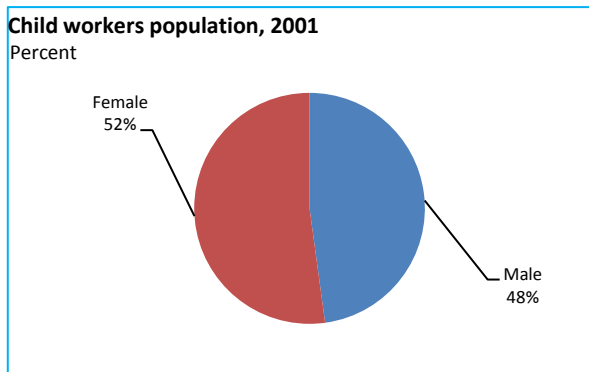


Source: DLHS, 2002-2004

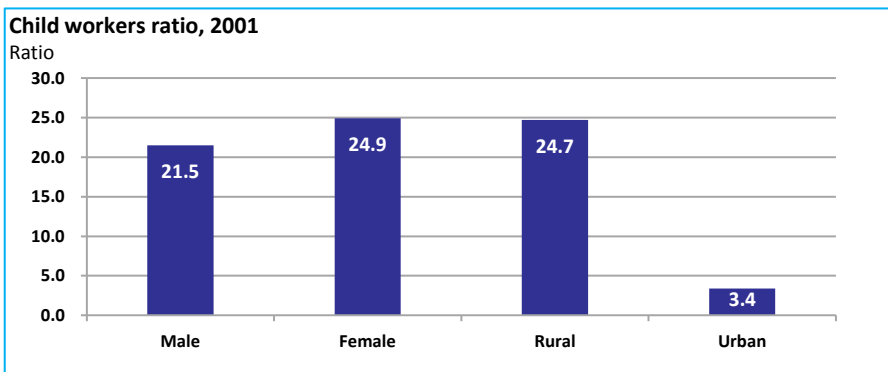


Source: DLHS

### CHILD PROTECTION



Source: Census



### ENVIRONMENT

Location/Caste	Total	Rural	Urban	SC	ST	Time Period
Households living in dilapidated houses (#)	2564	2172	392	241	2039	(2001)
Households without electricity (#)	120228	118335	1893	3338	115630	(2001)
Households without latrines (#)	206062	200089	5973	6998	190662	(2001)

Source: Census

**Habitation with drinking water access**

<40 LPCD	40 to 55 LPCD	With 0 population coverage	With 100% population coverage	With population coverage > 0 and < 100%	Time Period
0	610	-	2170	-	(2009)

Source: IMIS

### INFRASTRUCTURE

Proportion of villages having any health facility PHC/SHC/AYUSH (%)	38.3	(2001)	Proportion of villages having at least a primary school (%)	89.6	(2001)
---	------	--------	---	------	--------

Source: Census

