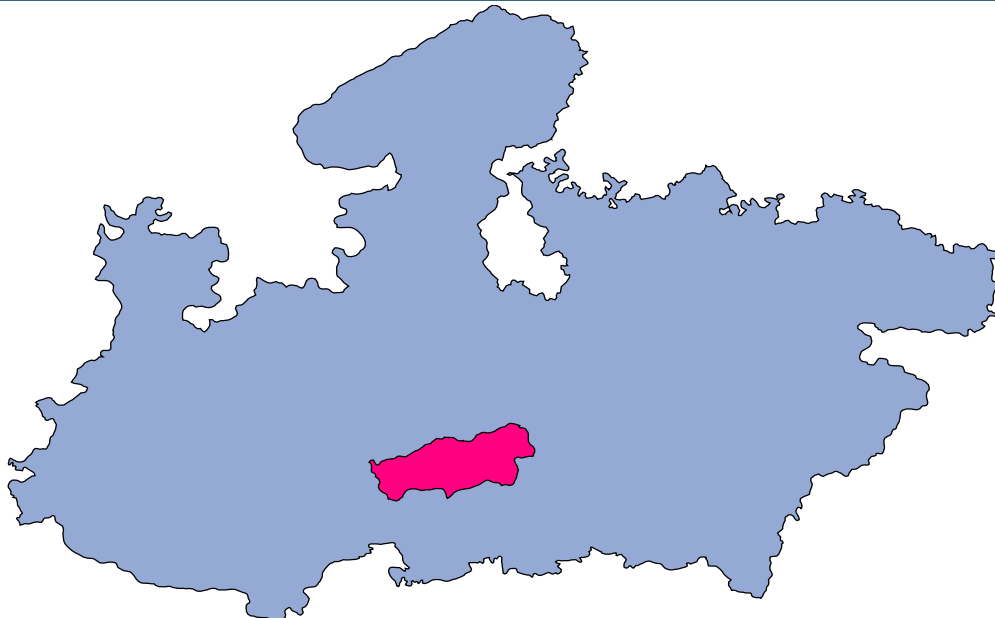




Hoshangabad



MONITORING XI PLAN GOALS



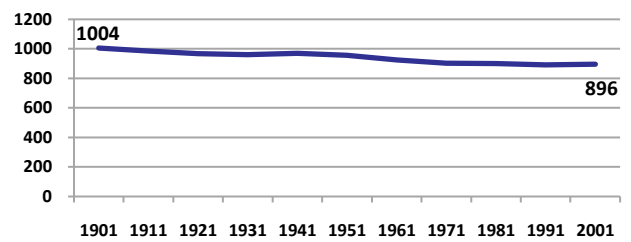
Hoshangabad

DEMOGRAPHICS

| Location/Caste | Total | Rural | Urban | SC | ST | Non SC/ST | Time Period |
|---|-------|-------|-------|-----|-----|-----------|-------------|
| Population size (000) | 1084 | - | - | - | - | - | (2001) |
| Average annual population growth rate (%) | 2.0 | 1.9 | 2.2 | - | - | - | (2001) |
| Decadal growth rate (%) | 22.3 | - | - | - | - | - | (2001) |
| Population density (Persons per Sq Km) | 162 | - | - | - | - | - | (2001) |
| Sex ratio (Females per 1000 males) | 896 | 897 | 895 | 896 | 932 | 890 | (2001) |
| Sex ratio (0-6 years, Females per 1000 males) | 927 | 932 | 910 | 927 | 928 | 885 | (2001) |
| Level of urbanization (%) | 30.8 | - | - | - | - | - | (2001) |

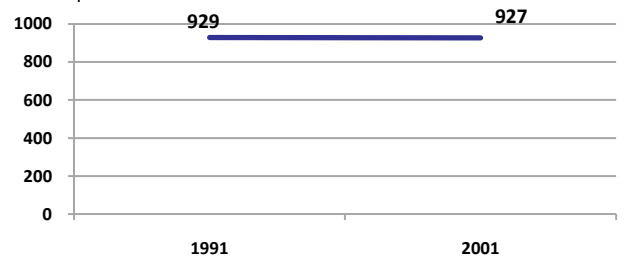
Sex ratio

Females per 1000 males



Sex ratio, 0-6 years

Females per 1000 males



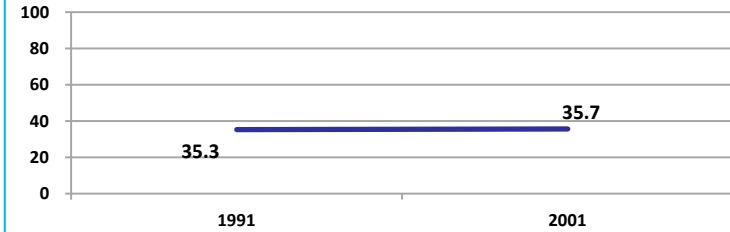
Source: Census

Source: Census

ECONOMY

Work participation rate

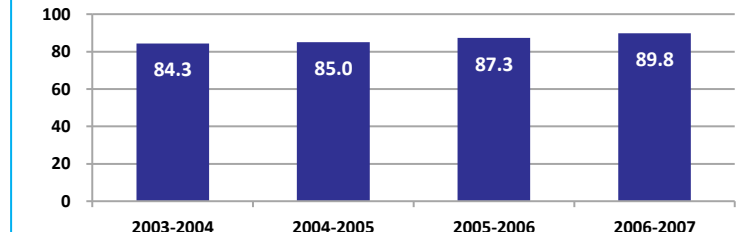
Percent



Source: Census

Net sown area irrigated

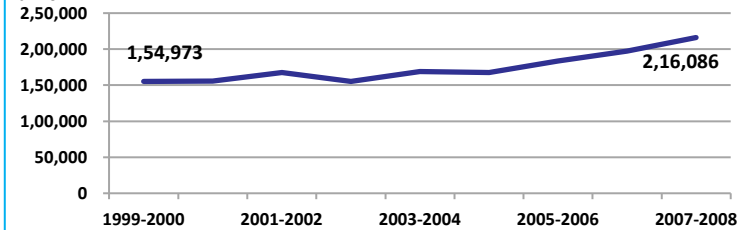
Percent



Source: Census, 2001 Projected

Net district domestic product at constant (1990-2000) prices

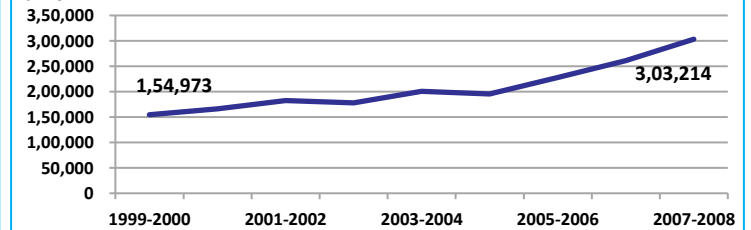
Lakhs



Source: DES, 2009

Net district domestic product at current prices

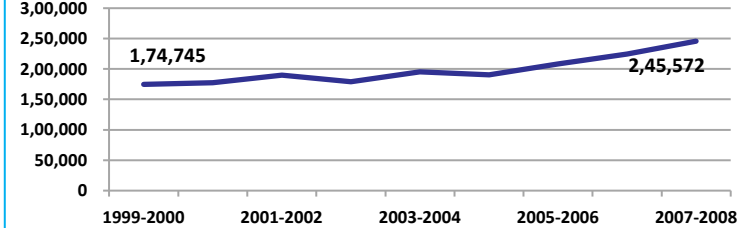
Lakhs



Source: DES, 2009

Gross district domestic Product at constant (1990-2000) prices

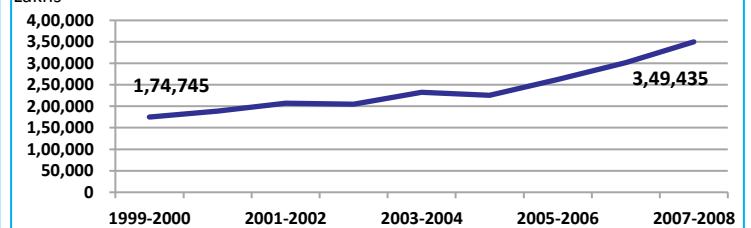
Lakhs



Source: DES, 2009

Gross district domestic product at current prices

Lakhs



Source: DES, 2009



State Planning Commission



Hoshangabad

ECONOMY

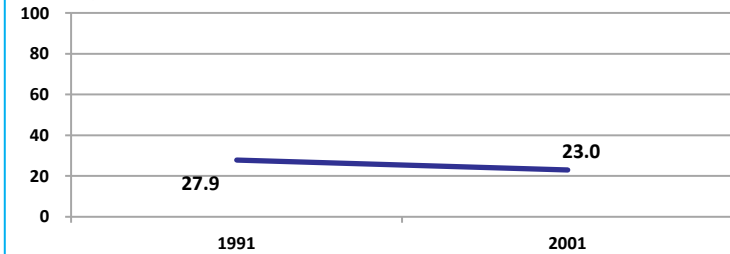
| Location/Caste | Total | Rural | Urban | SC | ST | Non SC/ST | Time Period |
|--|--------|-------|-------|-------|-------|-----------|-------------|
| Industrial working population (%) | 697145 | - | - | - | - | - | (2001) |
| Marginal working population (%) | 8.6 | - | - | - | - | - | (2001) |
| Main working population (%) | 27.1 | - | - | - | - | - | (2001) |
| Farmers and agricultural labour in population (%) | 22.6 | - | - | - | - | - | (2001) |
| Schedule caste population (%) | 15.8 | 15.9 | 15.5 | - | - | - | (2001) |
| Schedule tribe population (%) | 15.1 | 19.7 | 5.0 | - | - | - | (2001) |
| Households having none of the six household assets (Radio/Transistor, Television, Telephone, Bicycle, Two wheeler, Four wheeler) (#) | 77100 | 66707 | 10393 | 16455 | 17727 | - | (2001) |

Source: Census

EDUCATION

Gender gap in literacy rate (Male-Female)

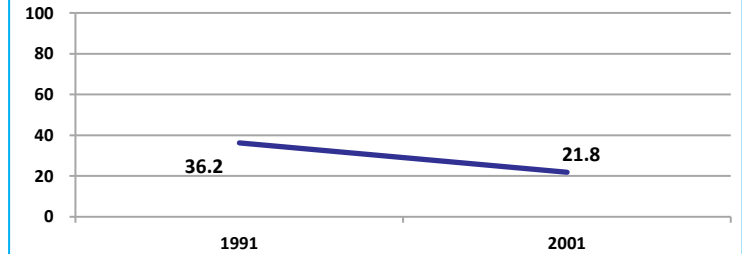
Percentage points



Source: Census

Gap in literacy rate by residence (Urban-Rural)

Percentage points



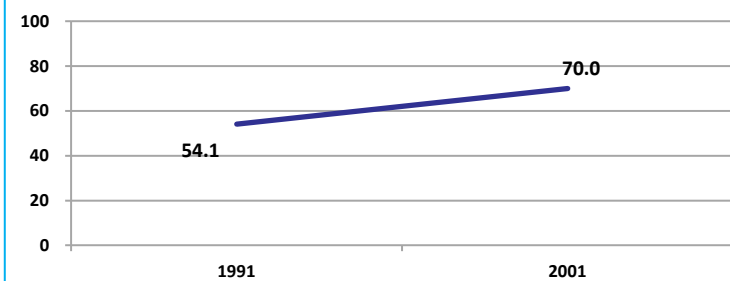
Source: Census

| Location/Sex/Caste | Total | Male | Female | Rural | Urban | SC | ST | Time Period |
|---|-------|-------|--------|-------|-------|------|------|-------------|
| Primary gross enrolment ratio ** | 104.1 | 104.1 | 104.1 | - | - | - | - | (2008-2009) |
| Upper primary gross enrolment ratio ** | 99.5 | 99.5 | 99.6 | - | - | - | - | (2008-2009) |
| Elementary gross enrolment ratio ** | 102.6 | 102.6 | 102.6 | - | - | - | - | (2008-2009) |
| Primary dropout rate (%) ** | - | 15.0 | 17.1 | - | - | - | - | (2008-2009) |
| Ratio of literate women to men (15-24 years) * | 0.6 | - | - | 0.6 | 0.8 | 0.6 | 0.5 | (2001) |
| Persons age 15+ completed primary education (%) * | 52.0 | 64.0 | 38.5 | 40.8 | 74.8 | 13.8 | 18.3 | (2001) |

Source: Census */Rajya Shiksha Kendra **

Literacy rate 7+

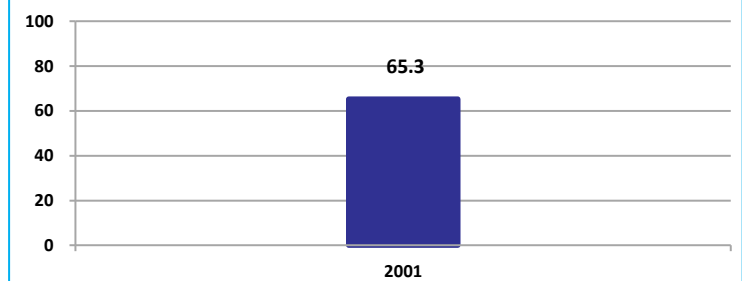
Percent



Source: Census

Literacy rate 15+

Percent



Source: Census

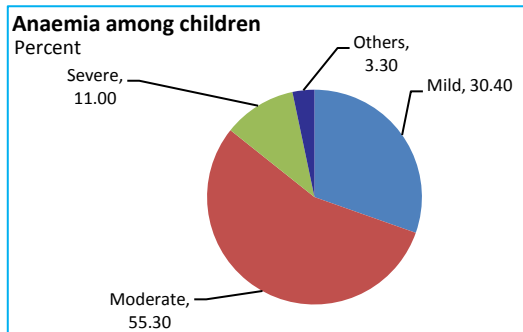


Hoshangabad

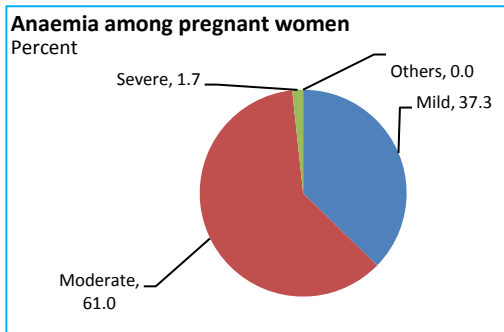
HEALTH & NUTRITION

| | | | | | |
|--|------|---|------|--|------|
| Contraceptive prevalence rate (15-44 yr) | 62.3 | Fully immunized children (12-23 months) | 65.5 | Prevalence of underweight (moderate and severe, <6 yr) | 43.1 |
|--|------|---|------|--|------|

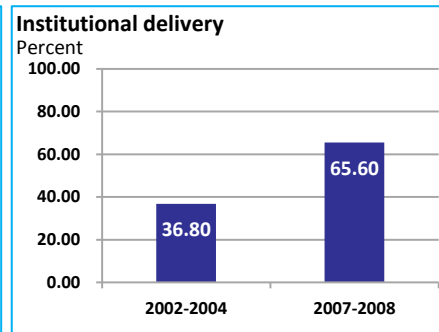
Source: DLHS, 2002-2004



Source: DLHS, 2002-2004

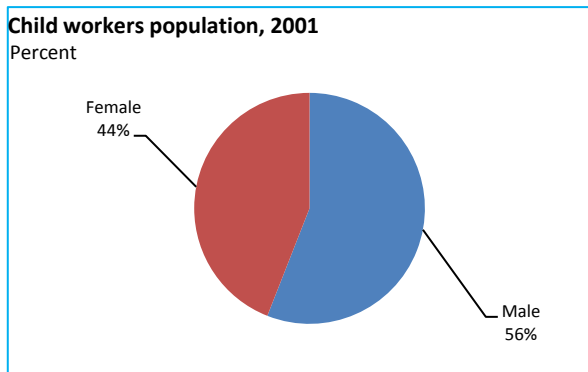


Source: DLHS, 2002-2004

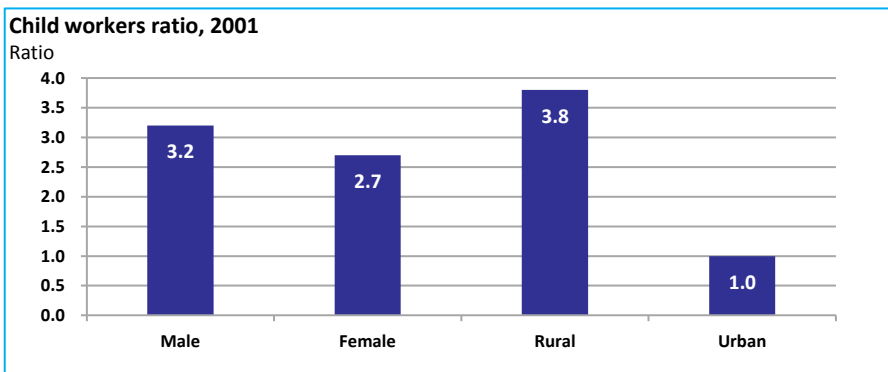


Source: DLHS

CHILD PROTECTION



Source: Census



ENVIRONMENT

| Location/Caste | Total | Rural | Urban | SC | ST | Time Period |
|---|--------|--------|-------|-------|-------|-------------|
| Households living in dilapidated houses (#) | 17983 | 15206 | 2777 | 4209 | 4154 | (2001) |
| Households without electricity (#) | 36747 | 33409 | 3338 | 6578 | 9050 | (2001) |
| Households without latrines (#) | 124610 | 109012 | 15598 | 26397 | 26611 | (2001) |

Source: Census

| Habitation with drinking water access | | | | | |
|---------------------------------------|---------------|----------------------------|-------------------------------|---|-------------|
| <40 LPCD | 40 to 55 LPCD | With 0 population coverage | With 100% population coverage | With population coverage > 0 and < 100% | Time Period |
| 0 | 210 | - | 5 | - | (2009) |

Source: IMIS

INFRASTRUCTURE

| | | | | | |
|---|------|--------|---|------|--------|
| Proportion of villages having any health facility PHC/SHC/AYUSH (%) | 38.4 | (2001) | Proportion of villages having at least a primary school (%) | 81.6 | (2001) |
|---|------|--------|---|------|--------|

Source: Census

