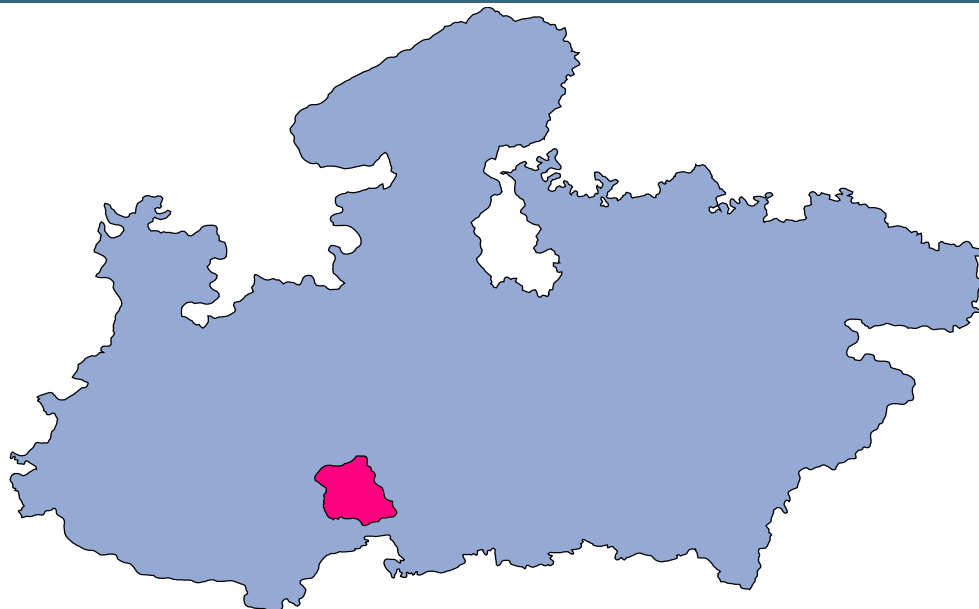




Harda



MONITORING XI PLAN GOALS



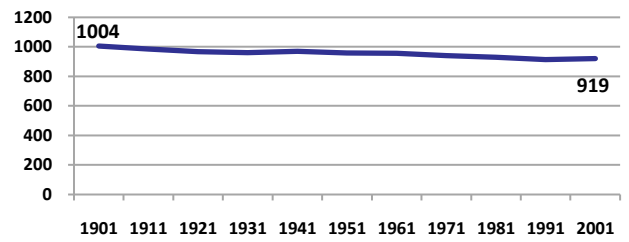
Harda

DEMOGRAPHICS

Location/Caste	Total	Rural	Urban	SC	ST	Non SC/ST	Time Period
Population size (000)	474	-	-	-	-	-	(2001)
Average annual population growth rate (%)	2.2	2.1	2.6	-	-	-	(2001)
Decadal growth rate (%)	24.6	-	-	-	-	-	(2001)
Population density (Persons per Sq Km)	142	-	-	-	-	-	(2001)
Sex ratio (Females per 1000 males)	919	923	905	902	943	912	(2001)
Sex ratio (0-6 years, Females per 1000 males)	925	924	929	939	936	846	(2001)
Level of urbanization (%)	21.3	-	-	-	-	-	(2001)

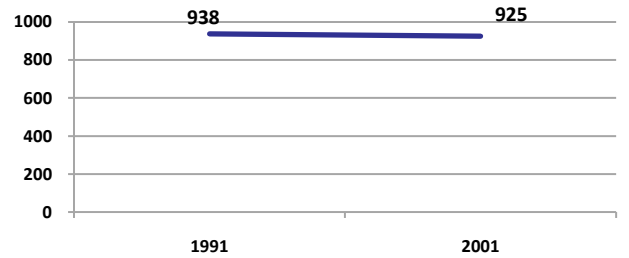
Sex ratio

Females per 1000 males



Sex ratio, 0-6 years

Females per 1000 males



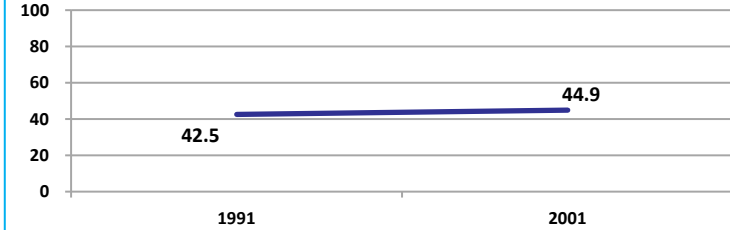
Source: Census

Source: Census

ECONOMY

Work participation rate

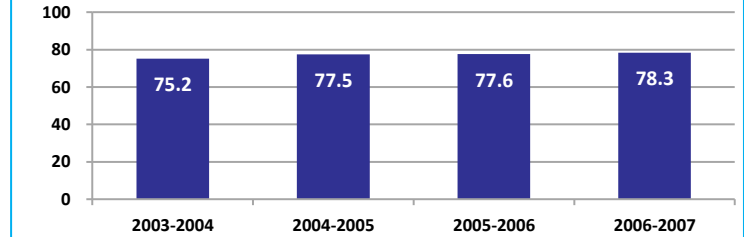
Percent



Source: Census

Net sown area irrigated

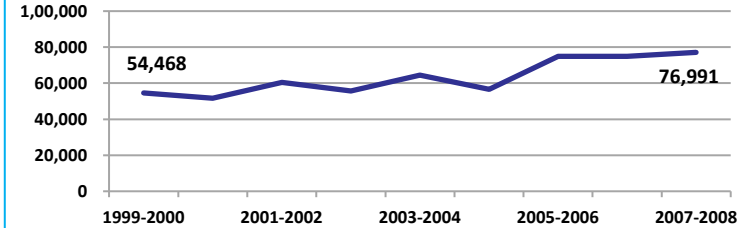
Percent



Source: Census, 2001 Projected

Net district domestic product at constant (1990-2000) prices

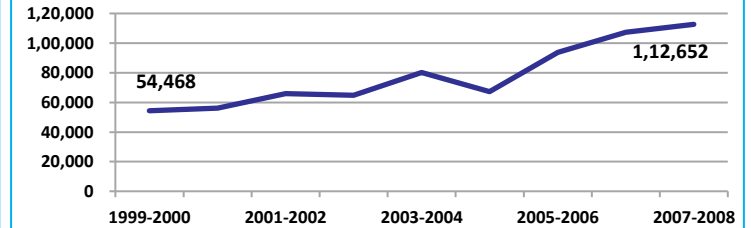
Lakhs



Source: DES, 2009

Net district domestic product at current prices

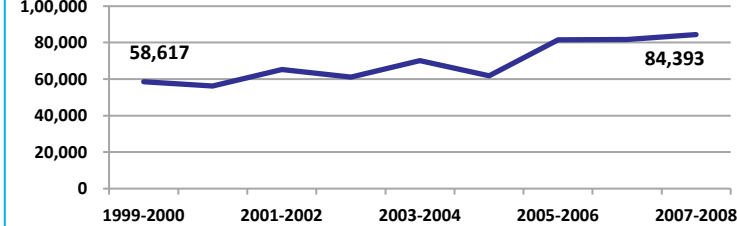
Lakhs



Source: DES, 2009

Gross district domestic Product at constant (1990-2000) prices

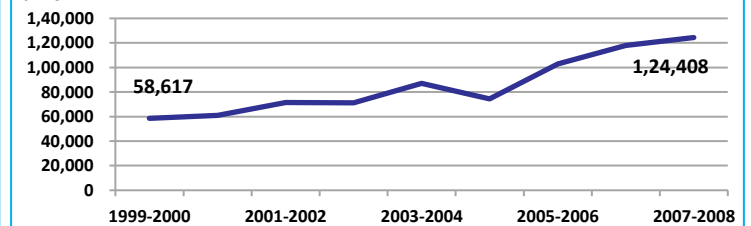
Lakhs



Source: DES, 2009

Gross district domestic product at current prices

Lakhs



Source: DES, 2009



State Planning Commission



Harda

ECONOMY

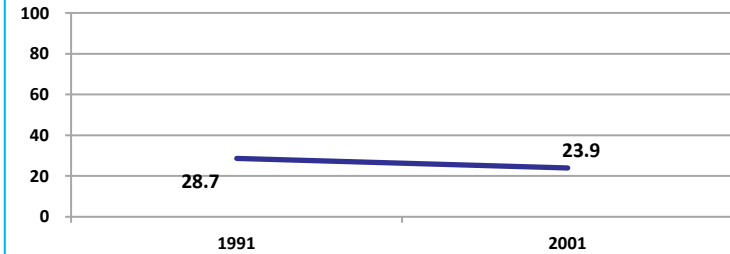
Location/Caste	Total	Rural	Urban	SC	ST	Non SC/ST	Time Period
Industrial working population (%)	261190	-	-	-	-	-	(2001)
Marginal working population (%)	12.9	-	-	-	-	-	(2001)
Main working population (%)	32.1	-	-	-	-	-	(2001)
Farmers and agricultural labour in population (%)	36.1	-	-	-	-	-	(2001)
Schedule caste population (%)	16.1	16.5	14.5	-	-	-	(2001)
Schedule tribe population (%)	26.6	32.6	4.6	-	-	-	(2001)
Households having none of the six household assets (Radio/Transistor, Television, Telephone, Bicycle, Two wheeler, Four wheeler) (#)	38739	34980	3759	8249	14654	-	(2001)

Source: Census

EDUCATION

Gender gap in literacy rate (Male-Female)

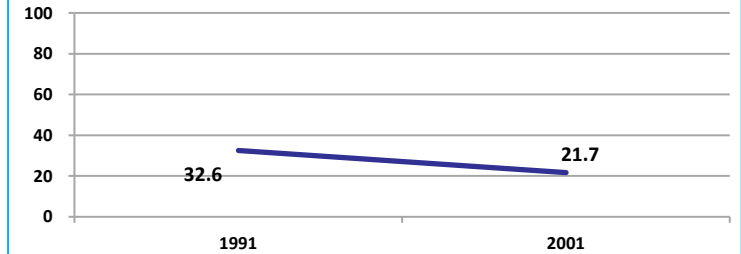
Percentage points



Source: Census

Gap in literacy rate by residence (Urban-Rural)

Percentage points



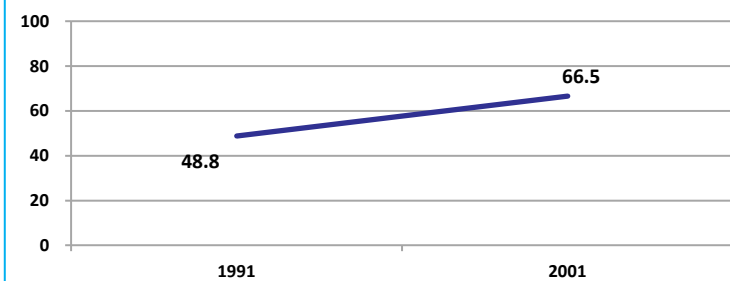
Source: Census

Location/Sex/Caste	Total	Male	Female	Rural	Urban	SC	ST	Time Period
Primary gross enrolment ratio **	101.0	101.0	101.0	-	-	-	-	(2008-2009)
Upper primary gross enrolment ratio **	99.2	99.2	99.1	-	-	-	-	(2008-2009)
Elementary gross enrolment ratio **	100.5	100.5	100.4	-	-	-	-	(2008-2009)
Primary dropout rate (%) **	-	17.3	20.8	-	-	-	-	(2008-2009)
Ratio of literate women to men (15-24 years) *	0.7	-	-	0.6	0.7	0.6	0.4	(2001)
Persons age 15+ completed primary education (%) *	42.1	53.8	29.4	34.0	69.3	9.3	21.6	(2001)

Source: Census */Rajya Shiksha Kendra **

Literacy rate 7+

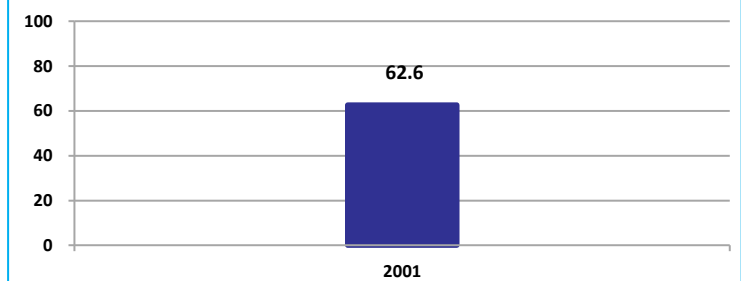
Percent



Source: Census

Literacy rate 15+

Percent



Source: Census

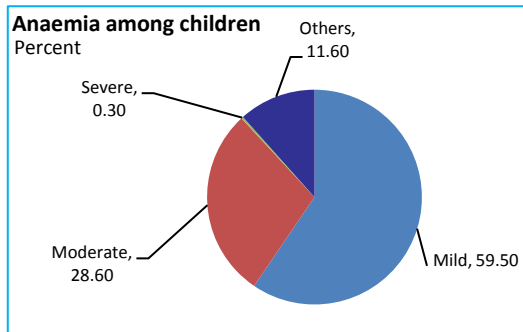


Harda

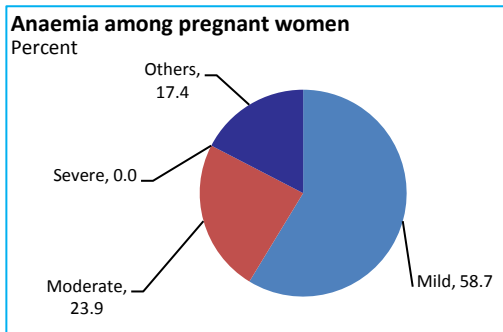
HEALTH & NUTRITION

Contraceptive prevalence rate (15-44 yr)	58.4	Fully immunized children (12-23 months)	49.8	Prevalence of underweight (moderate and severe, <6 yr)	45.6
--	------	---	------	--	------

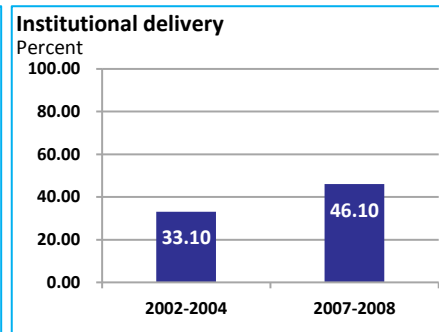
Source: DLHS, 2002-2004



Source: DLHS, 2002-2004

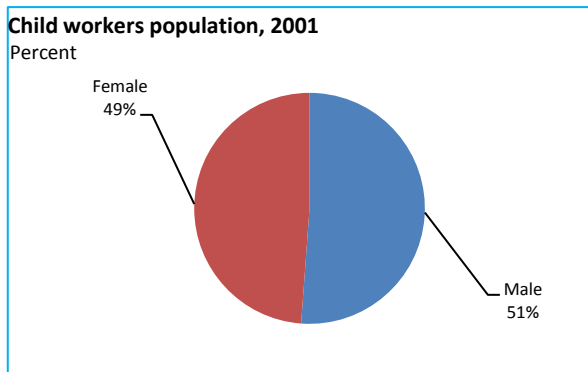


Source: DLHS, 2002-2004

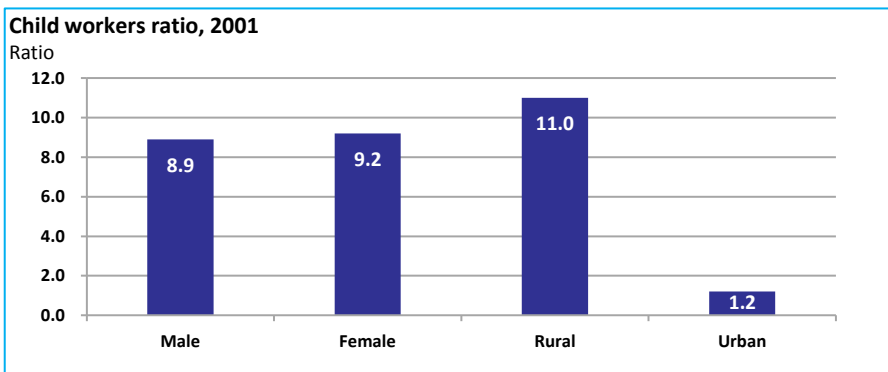


Source: DLHS

CHILD PROTECTION



Source: Census



ENVIRONMENT

Location/Caste	Total	Rural	Urban	SC	ST	Time Period
Households living in dilapidated houses (#)	6930	6003	927	1783	2651	(2001)
Households without electricity (#)	9156	8350	806	1530	4272	(2001)
Households without latrines (#)	57191	51309	5882	12824	19578	(2001)

Source: Census

Habitation with drinking water access					
<40 LPCD	40 to 55 LPCD	With 0 population coverage	With 100% population coverage	With population coverage > 0 and < 100%	Time Period
0	110	-	642	-	(2009)

Source: IMIS

INFRASTRUCTURE

Proportion of villages having any health facility PHC/SHC/AYUSH (%)	9.2	(2001)	Proportion of villages having at least a primary school (%)	69.5	(2001)
---	-----	--------	---	------	--------

Source: Census

