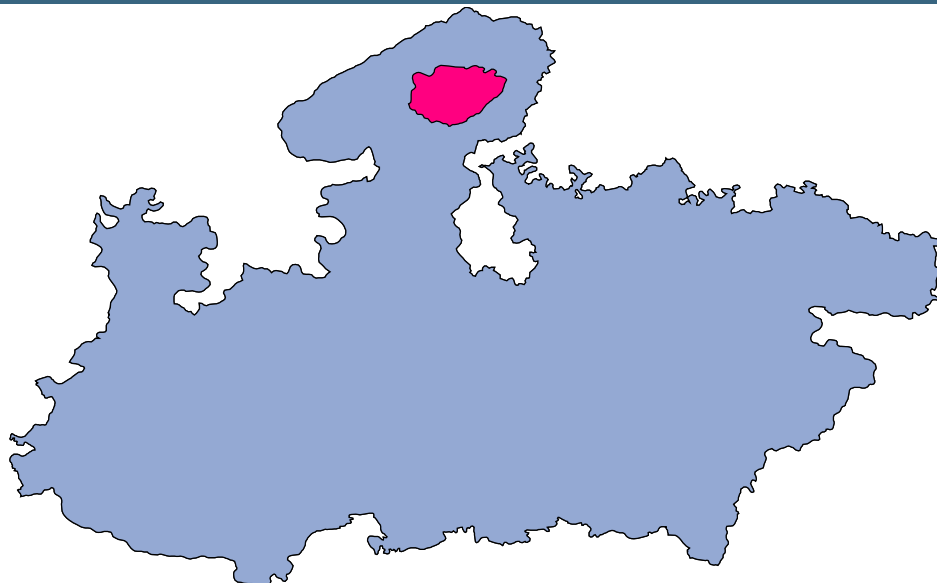




# Gwalior



## MONITORING XI PLAN GOALS



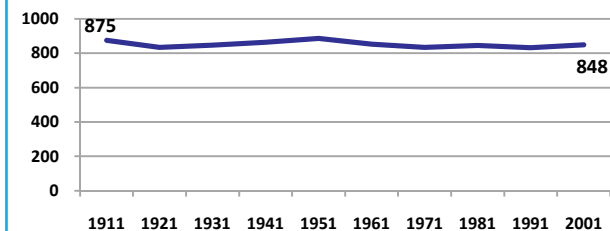
# Gwalior

## DEMOGRAPHICS

Location/Caste	Total	Rural	Urban	SC	ST	Non SC/ST	Time Period
Population size (000)	1632	-	-	-	-	-	(2001)
Average annual population growth rate (%)	2.3	3.0	1.9	-	-	-	(2001)
Decadal growth rate (%)	26.2	-	-	-	-	-	(2001)
Population density (Persons per Sq Km)	358	-	-	-	-	-	(2001)
Sex ratio (Females per 1000 males)	848	833	857	846	912	845	(2001)
Sex ratio (0-6 years, Females per 1000 males)	853	865	843	951	990	869	(2001)
Level of urbanization (%)	60.2	-	-	-	-	-	(2001)

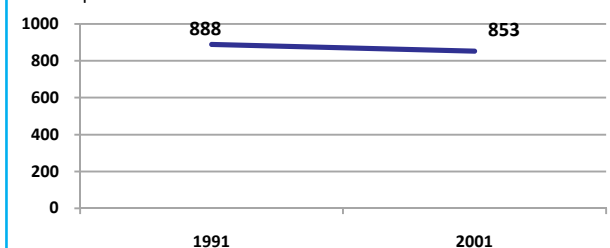
### Sex ratio

Females per 1000 males



### Sex ratio, 0-6 years

Females per 1000 males



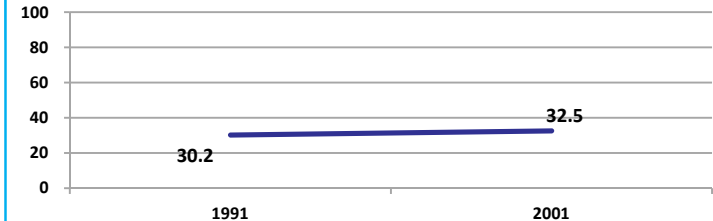
Source: Census

Source: Census

## ECONOMY

### Work participation rate

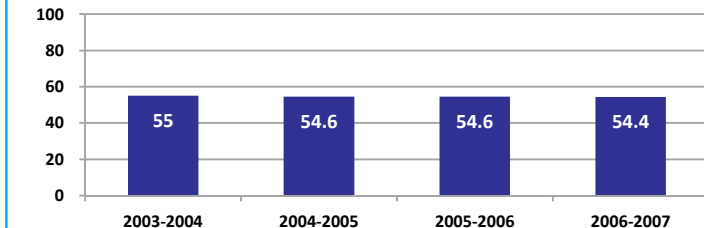
Percent



Source: Census

### Net sown area irrigated

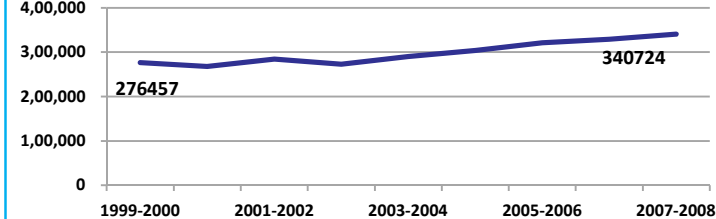
Percent



Source: Census, 2001 Projected

### Net District Domestic Product at constant (1990-2000) prices

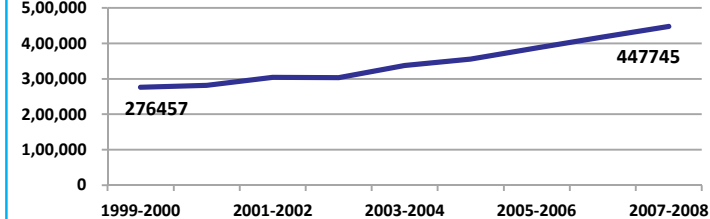
Lakhs



Source: DES, 2009

### Net District Domestic Product at current prices

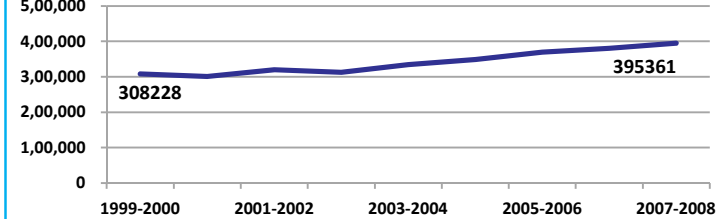
Lakhs



Source: DES, 2009

### Gross District Domestic Product at constant (1990-2000) prices

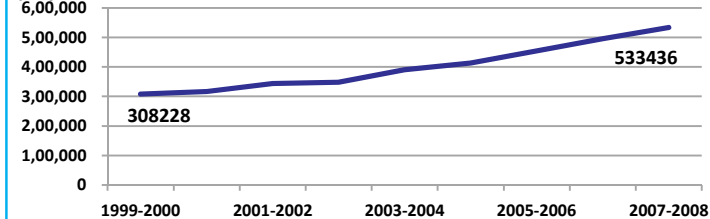
Lakhs



Source: DES, 2009

### Gross District Domestic Product at current prices

Lakhs



Source: DES, 2009



## Gwalior

### ECONOMY

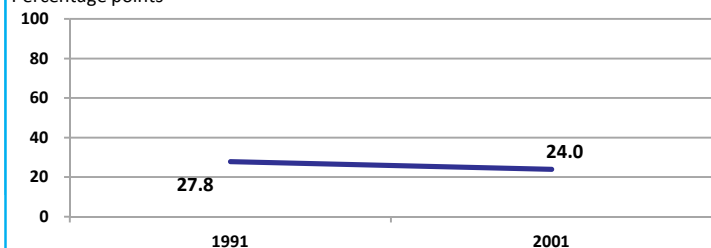
Location/Caste	Total	Rural	Urban	SC	ST	Non SC/ST	Time Period
Industrial working population (%)	1101480	-	-	-	-	-	(2001)
Marginal working population (%)	5.4	-	-	-	-	-	(2001)
Main working population (%)	27.1	-	-	-	-	-	(2001)
Farmers and agricultural labour in population (%)	13.1	-	-	-	-	-	(2001)
Schedule caste population (%)	18.9	22.0	16.9	-	-	-	(2001)
Schedule tribe population (%)	3.5	6.4	1.5	-	-	-	(2001)
Households having none of the six household assets (Radio/Transistor, Television, Telephone, Bicycle, Two wheeler, Four wheeler) (#)	57837	41353	16484	16111	6848	-	(2001)

Source: Census

### EDUCATION

#### Gender gap in literacy rate (Male-Female)

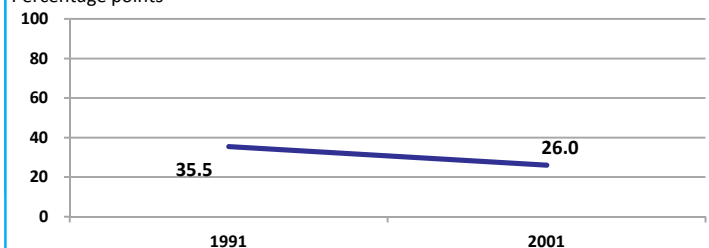
Percentage points



Source: Census

#### Gap in literacy rate by residence (Urban-Rural)

Percentage points



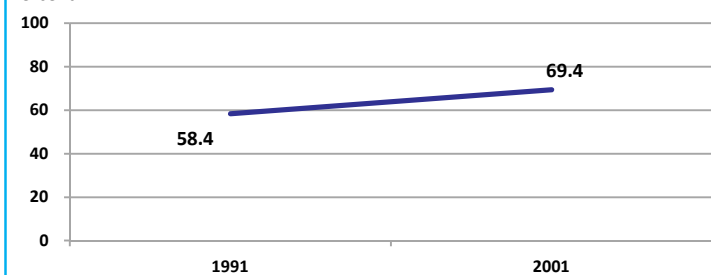
Source: Census

Location/Sex/Caste	Total	Male	Female	Rural	Urban	SC	ST	Time Period
Primary gross enrolment ratio **	104.6	104.6	104.6	-	-	-	-	(2008-2009)
Upper primary gross enrolment ratio **	105.0	104.9	105.0	-	-	-	-	(2008-2009)
Elementary gross enrolment ratio **	104.7	104.7	104.7	-	-	-	-	(2008-2009)
Primary dropout rate (%) **	-	17.2	15.9	-	-	-	-	(2008-2009)
Ratio of literate women to men (15-24 years) *	0.6	-	-	0.4	0.7	0.5	0.5	(2001)
Persons age 15+ completed primary education (%) *	58.9	71.2	44.4	36.4	72.0	10.2	9.3	(2001)

Source: Census \*/Rajya Shiksha Kendra \*\*

#### Literacy rate 7+

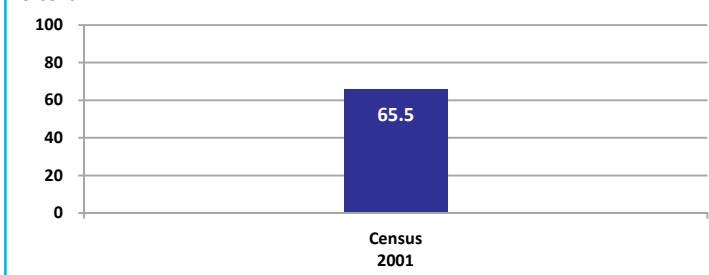
Percent



Source: Census

#### Literacy rate 15+

Percent

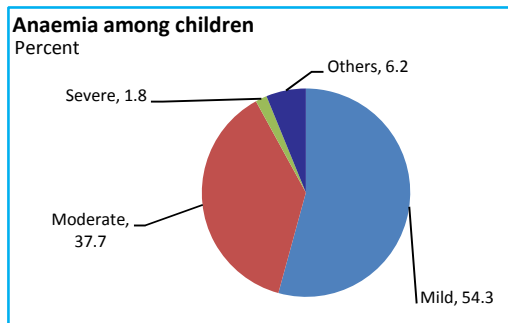


## Gwalior

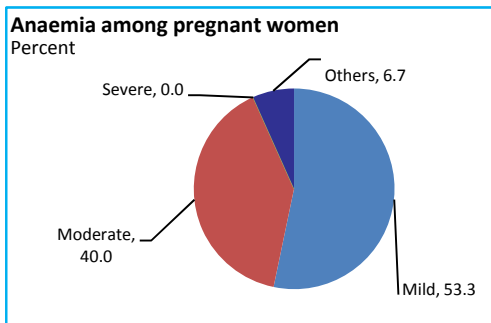
### HEALTH & NUTRITION

Contraceptive prevalence rate (15-44 yr)	48.5	Fully immunized children (12-23 months)	34.1	Prevalence of underweight (moderate and severe, <6 yr)	58.1
--	------	---	------	--	------

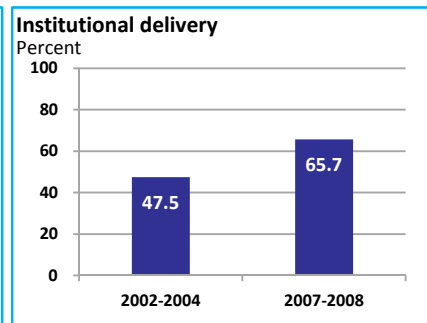
Source: DLHS, 2002-2004



Source: DLHS, 2002-2004

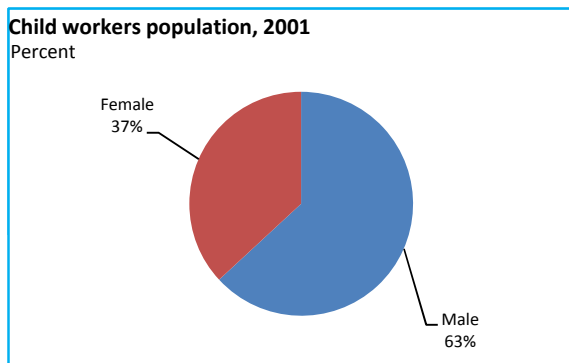


Source: DLHS, 2002-2004

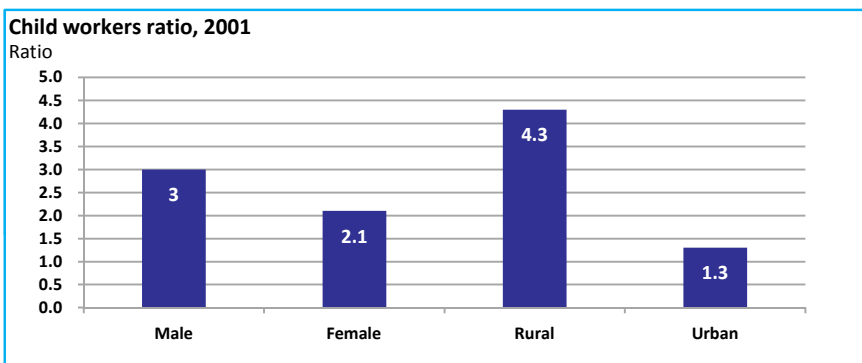


Source: DLHS

### CHILD PROTECTION



Source: Census



### ENVIRONMENT

Location/Caste	Total	Rural	Urban	SC	ST	Time Period
Households living in dilapidated houses (#)	8541	4625	3916	2165	1987	(2001)
Households without electricity (#)	36937	29504	7433	10070	3493	(2001)
Households without latrines (#)	120145	90167	29978	34524	9623	(2001)

Source: Census

**Habitation with drinking water access**

<40 LPCD	40 to 55 LPCD	With 0 population coverage	With 100% population coverage	With population coverage > 0 and < 100%	Time Period
0	130	-	512	-	(2009)

Source: IMIS

### INFRASTRUCTURE

Proportion of villages having any health facility PHC/SHC/AYUSH (%)	37.7	(2001)	Proportion of villages having at least a primary school (%)	85.6	(2001)
---	------	--------	---	------	--------

Source: Census

