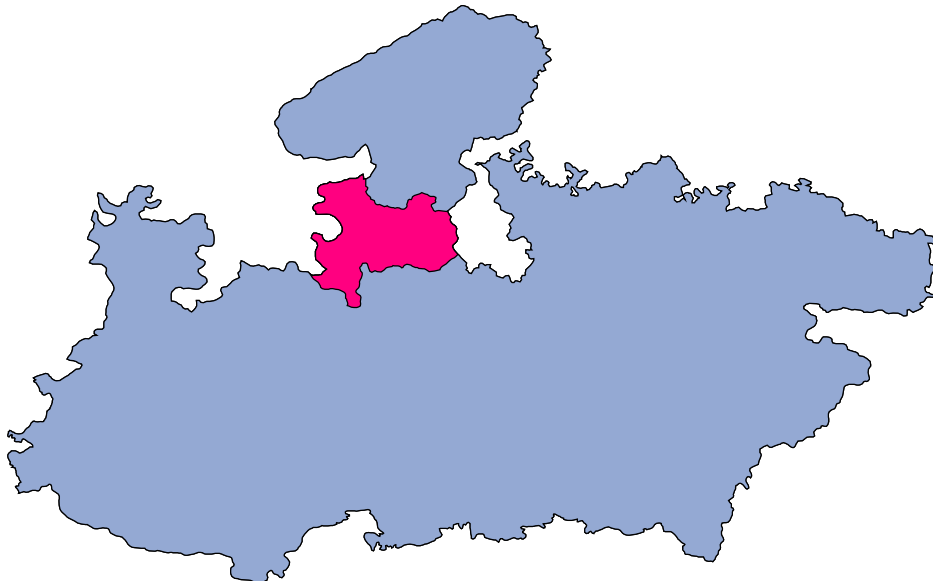




Guna



MONITORING XI PLAN GOALS



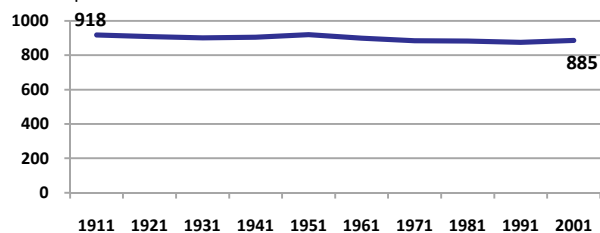
Guna

DEMOGRAPHICS

Location/Caste	Total	Rural	Urban	SC	ST	Non SC/ST	Time Period
Population size (000)	1667	-	-	-	-	-	(2001)
Average annual population growth rate (%)	2.4	2.2	3.3	-	-	-	(2001)
Decadal growth rate (%)	27.2	-	-	-	-	-	(2001)
Population density (Persons per Sq Km)	151	-	-	-	-	-	(2001)
Sex ratio (Females per 1000 males)	885	882	898	887	925	878	(2001)
Sex ratio (0-6 years, Females per 1000 males)	931	934	916	932	968	822	(2001)
Level of urbanization (%)	21.3	-	-	-	-	-	(2001)

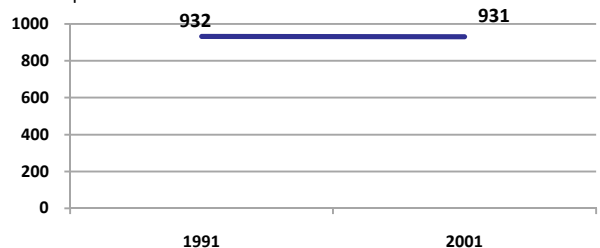
Sex ratio

Females per 1000 males



Sex ratio, 0-6 years

Females per 1000 males



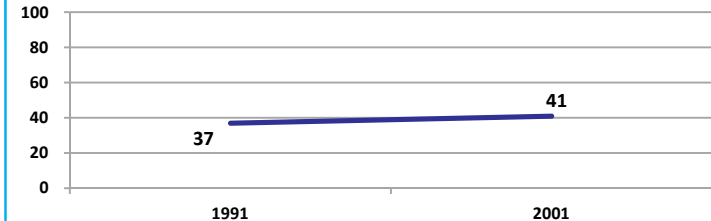
Source: Census

Source: Census

ECONOMY

Work participation rate

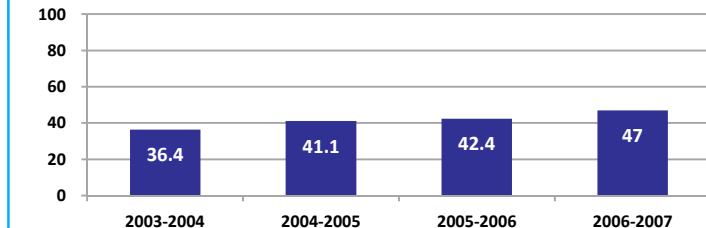
Percent



Source: Census

Net sown area irrigated

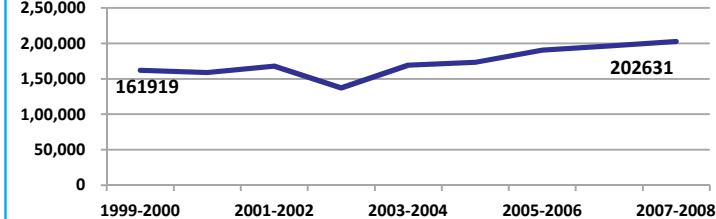
Percent



Source: Census, 2001 Projected

Net District Domestic Product at constant (1990-2000) prices

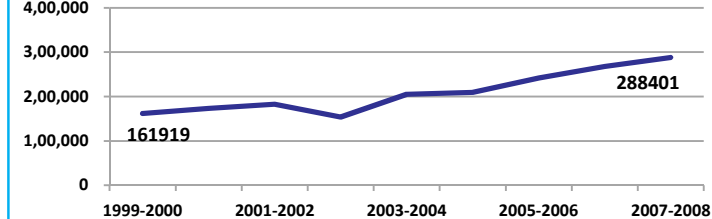
Lakhs



Source: DES, 2009

Net District Domestic Product at current prices

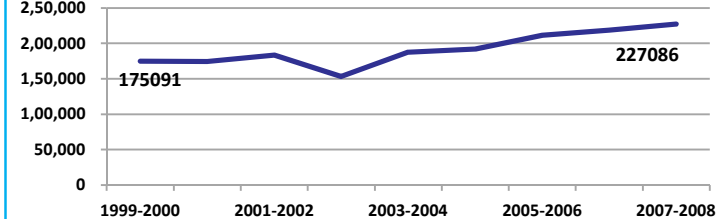
Lakhs



Source: DES, 2009

Gross District Domestic Product at constant (1990-2000) prices

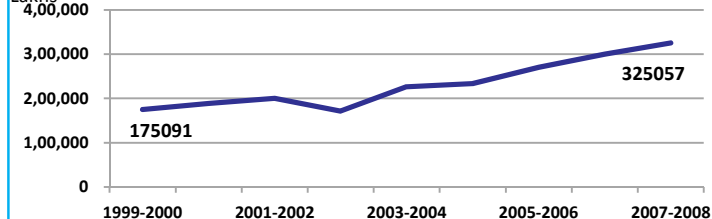
Lakhs



Source: DES, 2009

Gross District Domestic Product at current prices

Lakhs



Source: DES, 2009



Guna

ECONOMY

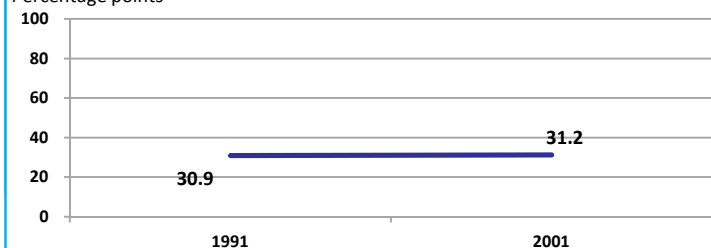
Location/Caste	Total	Rural	Urban	SC	ST	Non SC/ST	Time Period
Industrial working population (%)	983779	-	-	-	-	-	(2001)
Marginal working population (%)	11.2	-	-	-	-	-	(2001)
Main working population (%)	29.8	-	-	-	-	-	(2001)
Farmers and agricultural labour in population (%)	31.9	-	-	-	-	-	(2001)
Schedule caste population (%)	17.6	18.2	15.3	-	-	-	(2001)
Schedule tribe population (%)	12.2	14.8	2.8	-	-	-	(2001)
Households having none of the six household assets (Radio/Transistor, Television, Telephone, Bicycle, Two wheeler, Four wheeler) (#)	136306	122882	13424	30916	27484	-	(2001)

Source: Census

EDUCATION

Gender gap in literacy rate (Male-Female)

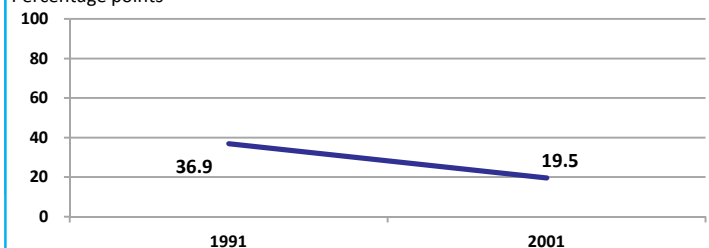
Percentage points



Source: Census

Gap in literacy rate by residence (Urban-Rural)

Percentage points



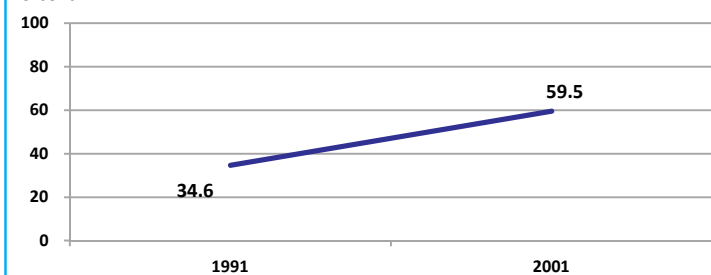
Source: Census

Location/Sex/Caste	Total	Male	Female	Rural	Urban	SC	ST	Time Period
Primary gross enrolment ratio **	116.1	116.0	116.2	-	-	-	-	(2008-2009)
Upper primary gross enrolment ratio **	99.6	99.7	99.5	-	-	-	-	(2008-2009)
Elementary gross enrolment ratio **	111.7	111.3	112.1	-	-	-	-	(2008-2009)
Primary dropout rate (%) **	-	15.9	20.1	-	-	-	-	(2008-2009)
Ratio of literate women to men (15-24 years) *	0.5	-	-	0.5	0.7	0.4	0.3	(2001)
Persons age 15+ completed primary education (%) *	35.8	49.6	20.0	27.9	63.0	10.7	5.6	(2001)

Source: Census */Rajya Shiksha Kendra **

Literacy rate 7+

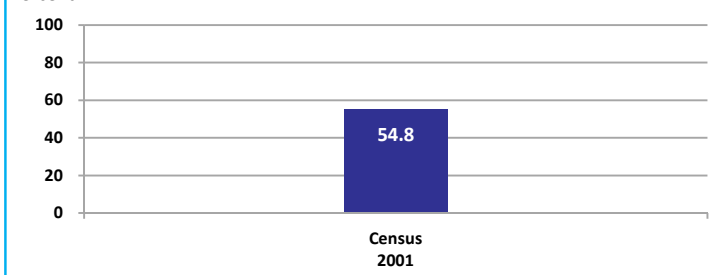
Percent



Source: Census

Literacy rate 15+

Percent



Guna

HEALTH & NUTRITION

Contraceptive prevalence rate (15-44 yr)	44.2	Fully immunized children (12-23 months)	12.8	Prevalence of underweight (moderate and severe, <6 yr)	61.0
--	------	---	------	--	------

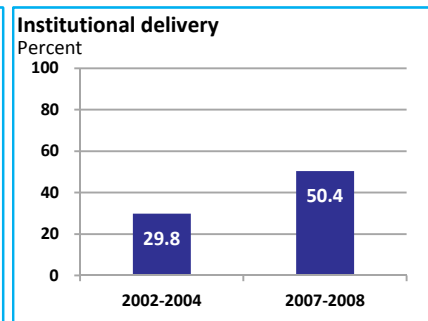
Source: DLHS, 2002-2004



Source: DLHS, 2002-2004

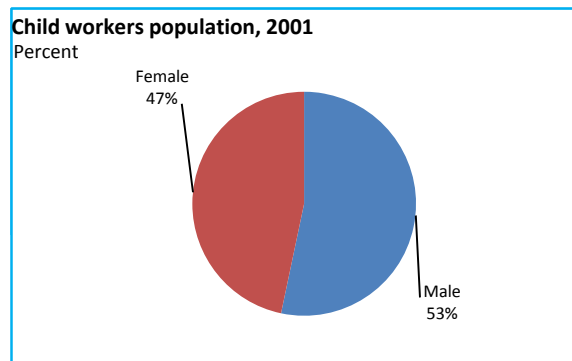


Source: DLHS, 2002-2004

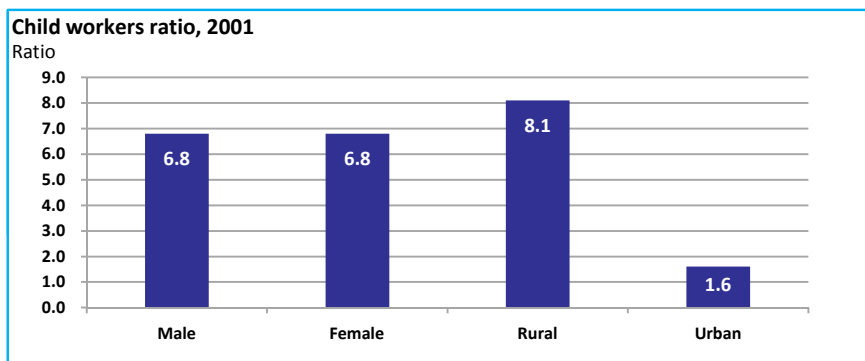


Source: DLHS

CHILD PROTECTION



Source: Census



ENVIRONMENT

Location/Caste	Total	Rural	Urban	SC	ST	Time Period
Households living in dilapidated houses (#)	7125	5883	1242	1446	2800	(2001)
Households without electricity (#)	85094	79129	5965	17831	17945	(2001)
Households without latrines (#)	227136	202115	25021	47547	36723	(2001)

Source: Census

Habitation with drinking water access

<40 LPCD	40 to 55 LPCD	With 0 population coverage	With 100% population coverage	With population coverage > 0 and < 100%	Time Period
0	280	-	2370	-	(2009)

Source: IMIS

INFRASTRUCTURE

Proportion of villages having any health facility PHC/SHC/AYUSH (%)	11.9	(2001)	Proportion of villages having at least a primary school (%)	73.3	(2001)
---	------	--------	---	------	--------

Source: Census

