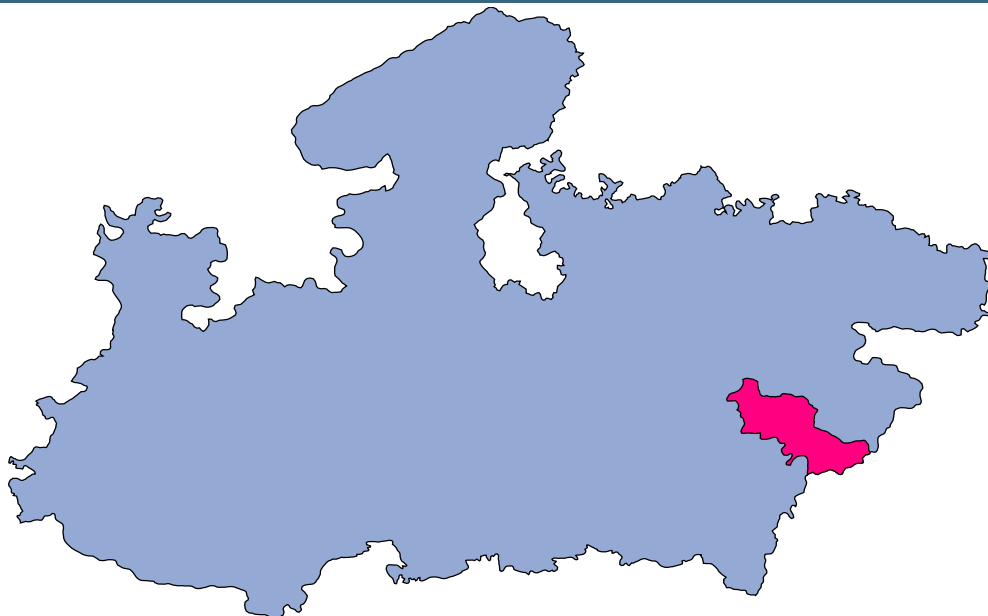




Dindori



MONITORING XI PLAN GOALS



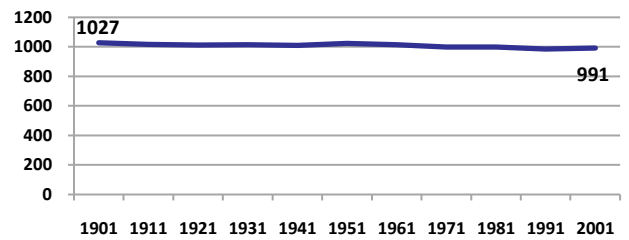
Dindori

DEMOGRAPHICS

Location/Caste	Total	Rural	Urban	SC	ST	Non SC/ST	Time Period
Population size (000)	581	-	-	-	-	-	(2001)
Average annual population growth rate (%)	1.3	1.2	1.5	-	-	-	(2001)
Decadal growth rate (%)	13.5	-	-	-	-	-	(2001)
Population density (Persons per Sq Km)	78	-	-	-	-	-	(2001)
Sex ratio (Females per 1000 males)	991	993	945	944	1011	966	(2001)
Sex ratio (0-6 years, Females per 1000 males)	990	991	962	918	935	925	(2001)
Level of urbanization (%)	4.6	-	-	-	-	-	(2001)

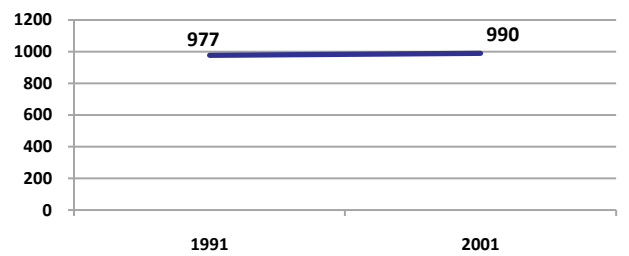
Sex ratio

Females per 1000 males



Sex ratio, 0-6 years

Females per 1000 males



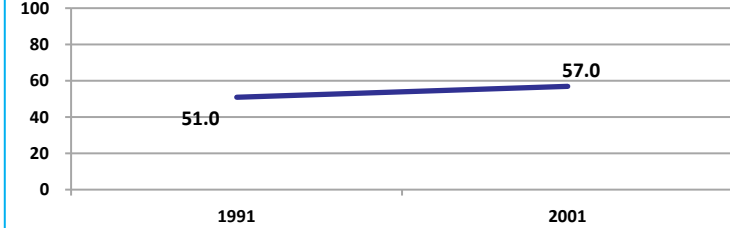
Source: Census

Source: Census

ECONOMY

Work participation rate

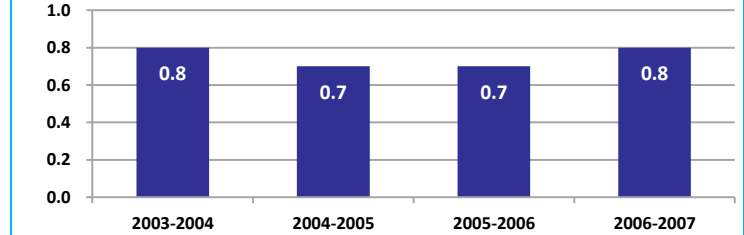
Percent



Source: Census

Net sown area irrigated

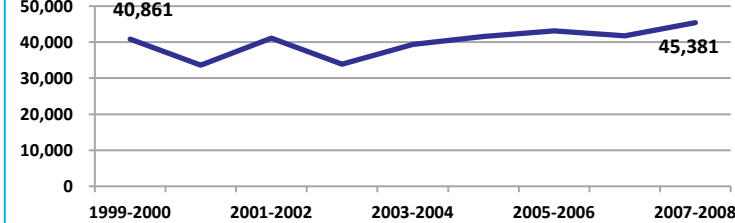
Percent



Source: Census, 2001 Projected

Net district domestic product at constant (1990-2000) prices

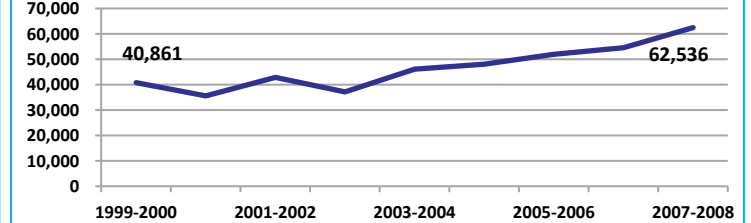
Lakhs



Source: DES, 2009

Net district domestic product at current prices

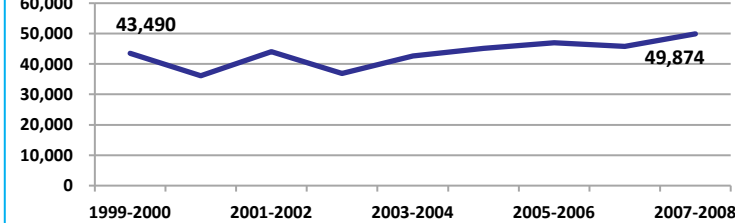
Lakhs



Source: DES, 2009

Gross district domestic Product at constant (1990-2000) prices

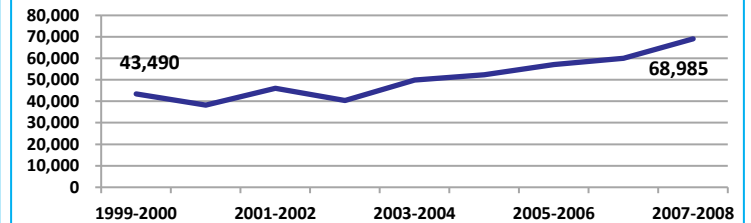
Lakhs



Source: DES, 2009

Gross district domestic product at current prices

Lakhs



Source: DES, 2009



State Planning Commission



Dindori

ECONOMY

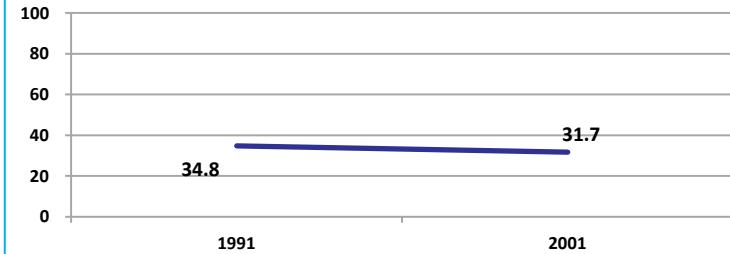
Location/Caste	Total	Rural	Urban	SC	ST	Non SC/ST	Time Period
Industrial working population (%)	249823	-	-	-	-	-	(2001)
Marginal working population (%)	12.1	-	-	-	-	-	(2001)
Main working population (%)	44.8	-	-	-	-	-	(2001)
Farmers and agricultural labour in population (%)	51.4	-	-	-	-	-	(2001)
Schedule caste population (%)	5.8	5.8	5.7	-	-	-	(2001)
Schedule tribe population (%)	64.5	66.6	21.6	-	-	-	(2001)
Households having none of the six household assets (Radio/Transistor, Television, Telephone, Bicycle, Two wheeler, Four wheeler) (#)	92791	90559	2232	6062	62948	-	(2001)

Source: Census

EDUCATION

Gender gap in literacy rate (Male-Female)

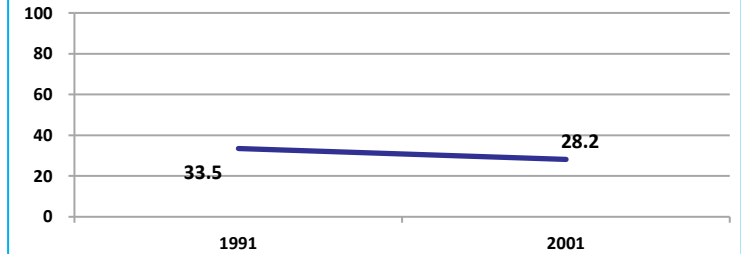
Percentage points



Source: Census

Gap in literacy rate by residence (Urban-Rural)

Percentage points



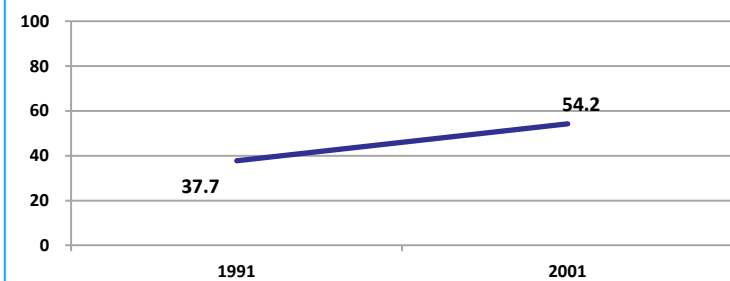
Source: Census

Location/Sex/Caste	Total	Male	Female	Rural	Urban	SC	ST	Time Period
Primary gross enrolment ratio **	99.8	100.4	99.3	-	-	-	-	(2008-2009)
Upper primary gross enrolment ratio **	104.7	106.5	102.9	-	-	-	-	(2008-2009)
Elementary gross enrolment ratio **	101.1	102.0	100.3	-	-	-	-	(2008-2009)
Primary dropout rate (%) **	-	20.9	24.2	-	-	-	-	(2008-2009)
Ratio of literate women to men (15-24 years) *	0.7	-	-	0.7	0.8	0.6	0.7	(2001)
Persons age 15+ completed primary education (%) *	32.9	46.1	19.7	31.0	69.7	39.7	10.2	(2001)

Source: Census */Rajya Shiksha Kendra **

Literacy rate 7+

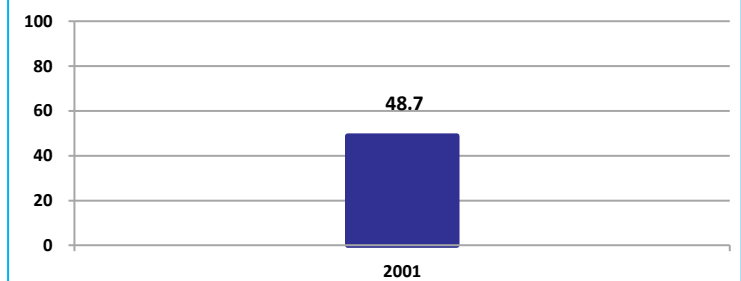
Percent



Source: Census

Literacy rate 15+

Percent



Source: Census

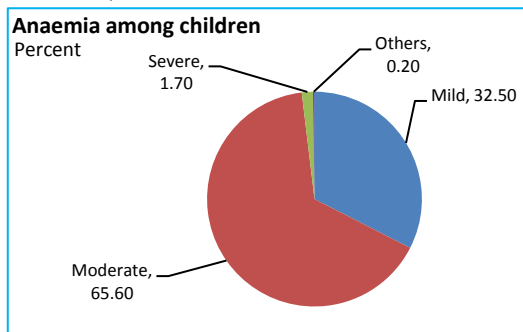


Dindori

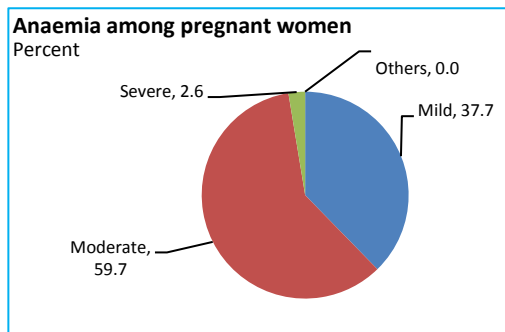
HEALTH & NUTRITION

Contraceptive prevalence rate (15-44 yr)	52.9	Fully immunized children (12-23 months)	35.2	Prevalence of underweight (moderate and severe, <6 yr)	58.8
--	------	---	------	--	------

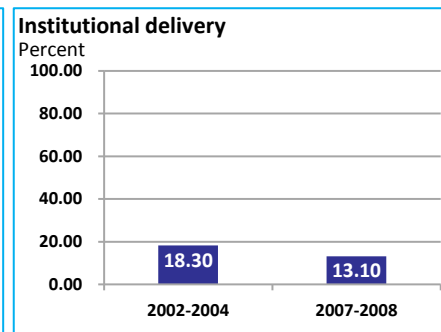
Source: DLHS, 2002-2004



Source: DLHS, 2002-2004

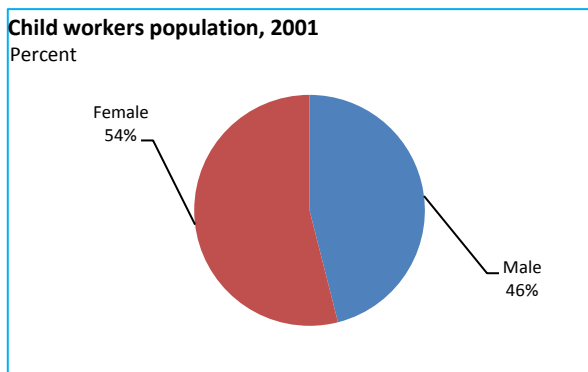


Source: DLHS, 2002-2004

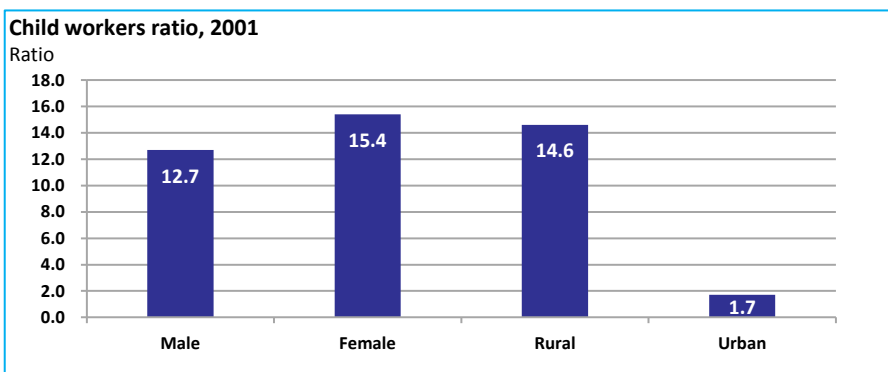


Source: DLHS

CHILD PROTECTION



Source: Census



ENVIRONMENT

Location/Caste	Total	Rural	Urban	SC	ST	Time Period
Households living in dilapidated houses (#)	2409	2281	128	151	1377	(2001)
Households without electricity (#)	79257	78481	776	3688	55303	(2001)
Households without latrines (#)	118936	115754	3182	8410	77809	(2001)

Source: Census

Habitation with drinking water access

<40 LPCD	40 to 55 LPCD	With 0 population coverage	With 100% population coverage	With population coverage > 0 and < 100%	Time Period
20	300	-	184	-	(2009)

Source: IMIS

INFRASTRUCTURE

Proportion of villages having any health facility PHC/SHC/AYUSH (%)	21.3	(2001)	Proportion of villages having at least a primary school (%)	86.5	(2001)
---	------	--------	---	------	--------

Source: Census

