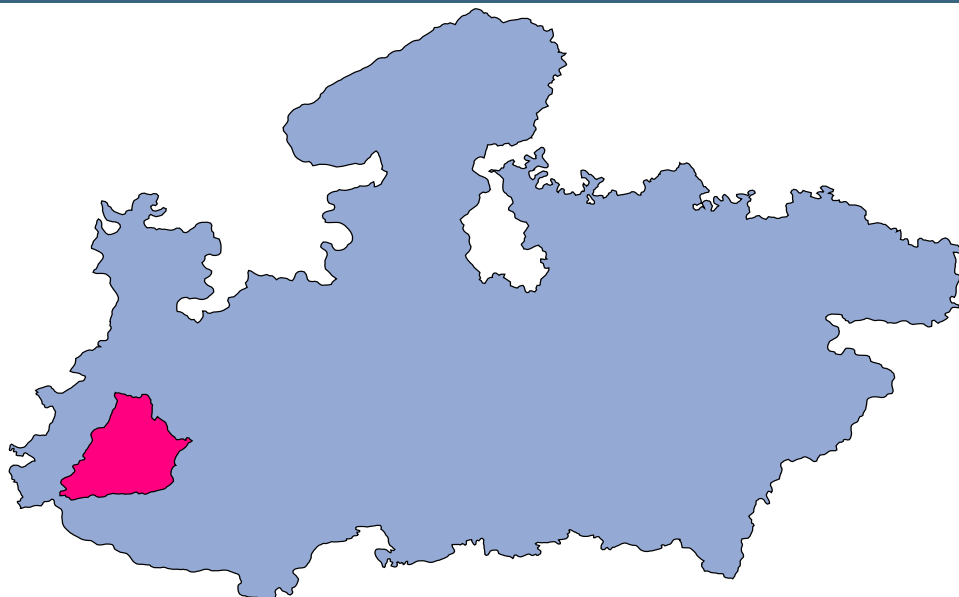




Dhar



MONITORING XI PLAN GOALS



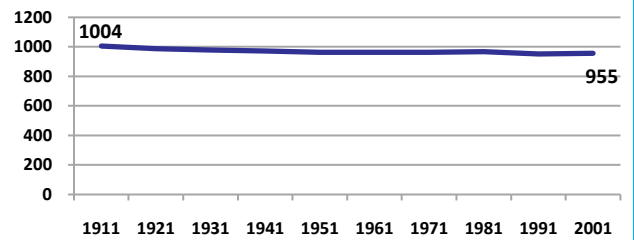
Dhar

DEMOGRAPHICS

Location/Caste	Total	Rural	Urban	SC	ST	Non SC/ST	Time Period
Population size (000)	1740	-	-	-	-	-	(2001)
Average annual population growth rate (%)	2.4	2.0	4.7	-	-	-	(2001)
Decadal growth rate (%)	27.3	-	-	-	-	-	(2001)
Population density (Persons per Sq Km)	213	-	-	-	-	-	(2001)
Sex ratio (Females per 1000 males)	955	971	875	953	981	917	(2001)
Sex ratio (0-6 years, Females per 1000 males)	943	950	901	959	941	858	(2001)
Level of urbanization (%)	16.6	-	-	-	-	-	(2001)

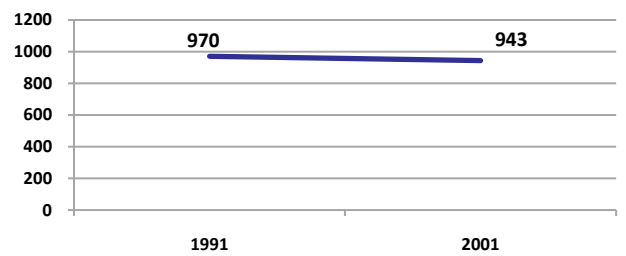
Sex ratio

Females per 1000 males



Sex ratio, 0-6 years

Females per 1000 males



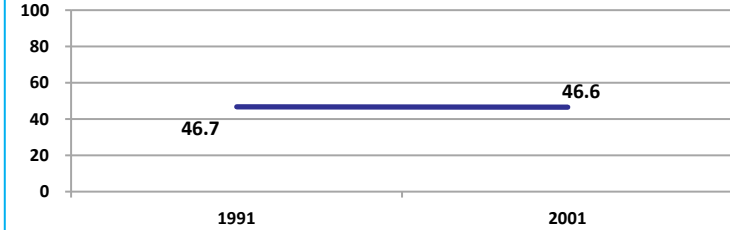
Source: Census

Source: Census

ECONOMY

Work participation rate

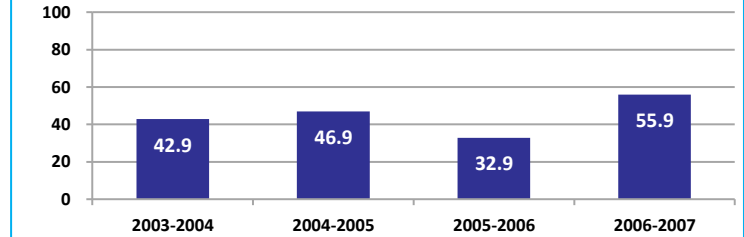
Percent



Source: Census

Net sown area irrigated

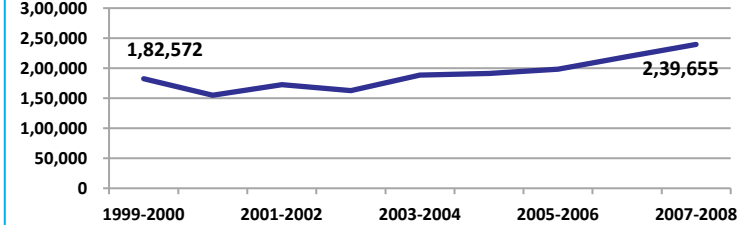
Percent



Source: Census, 2001 Projected

Net district domestic product at constant (1990-2000) prices

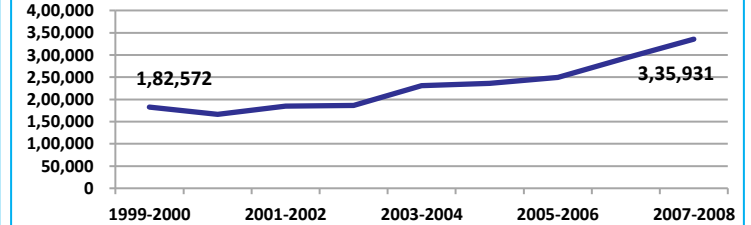
Lakhs



Source: DES, 2009

Net district domestic product at current prices

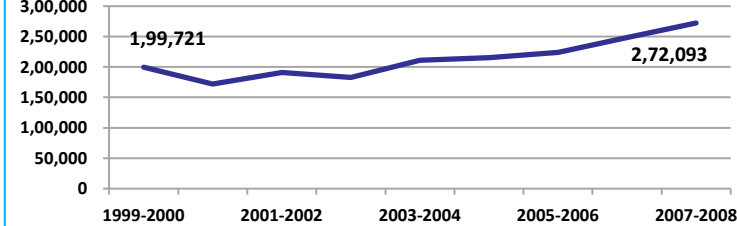
Lakhs



Source: DES, 2009

Gross district domestic Product at constant (1990-2000) prices

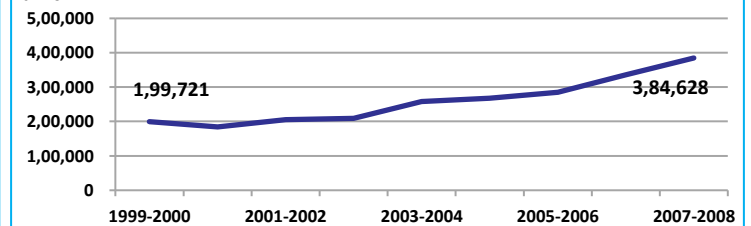
Lakhs



Source: DES, 2009

Gross district domestic product at current prices

Lakhs



Source: DES, 2009



State Planning Commission



Dhar

ECONOMY

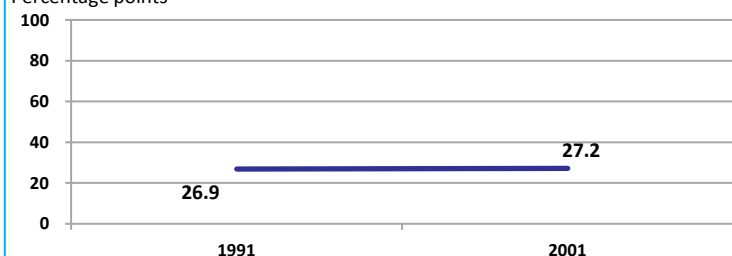
Location/Caste	Total	Rural	Urban	SC	ST	Non SC/ST	Time Period
Industrial working population (%)	928914	-	-	-	-	-	(2001)
Marginal working population (%)	12.4	-	-	-	-	-	(2001)
Main working population (%)	34.2	-	-	-	-	-	(2001)
Farmers and agricultural labour in population (%)	38.1	-	-	-	-	-	(2001)
Schedule caste population (%)	6.5	6.2	8.0	-	-	-	(2001)
Schedule tribe population (%)	54.5	61.8	17.5	-	-	-	(2001)
Households having none of the six household assets (Radio/Transistor, Television, Telephone, Bicycle, Two wheeler, Four wheeler) (#)	140510	127119	13391	11396	98121	-	(2001)

Source: Census

EDUCATION

Gender gap in literacy rate (Male-Female)

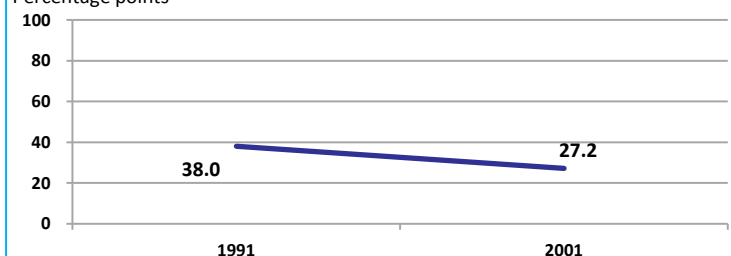
Percentage points



Source: Census

Gap in literacy rate by residence (Urban-Rural)

Percentage points



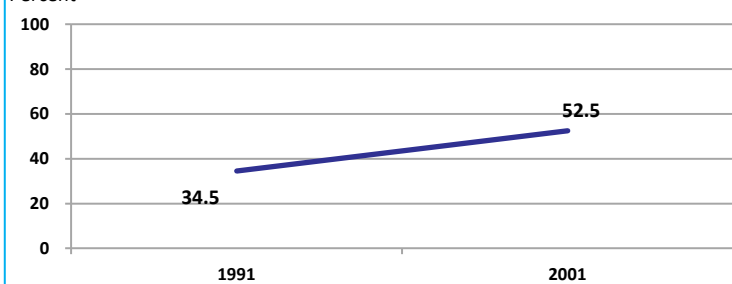
Source: Census

Location/Sex/Caste	Total	Male	Female	Rural	Urban	SC	ST	Time Period
Primary gross enrolment ratio **	102.8	102.4	103.3	-	-	-	-	(2008-2009)
Upper primary gross enrolment ratio **	93.5	93.9	93.0	-	-	-	-	(2008-2009)
Elementary gross enrolment ratio **	100.4	100.1	100.7	-	-	-	-	(2008-2009)
Primary dropout rate (%) **	-	5.5	9.0	-	-	-	-	(2008-2009)
Ratio of literate women to men (15-24 years) *	0.6	-	-	0.6	0.7	0.5	0.5	(2001)
Persons age 15+ completed primary education (%) *	35.4	48.0	22.3	29.1	63.9	8.9	7.4	(2001)

Source: Census */Rajya Shiksha Kendra **

Literacy rate 7+

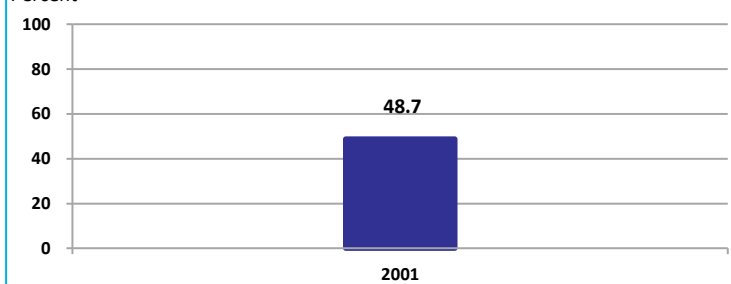
Percent



Source: Census

Literacy rate 15+

Percent



Source: Census

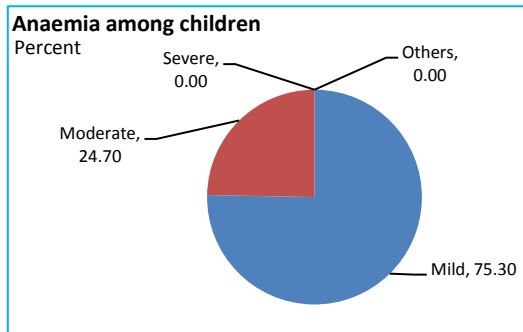


Dhar

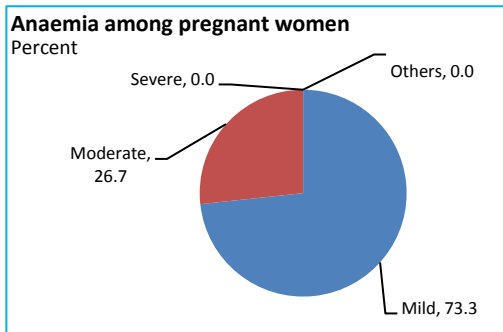
HEALTH & NUTRITION

Contraceptive prevalence rate (15-44 yr)	52.5	Fully immunized children (12-23 months)	35.9	Prevalence of underweight (moderate and severe, <6 yr)	63.7
------------------------------------------	------	-----------------------------------------	------	--------------------------------------------------------	------

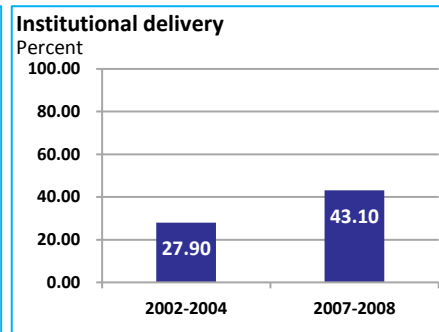
Source: DLHS, 2002-2004



Source: DLHS, 2002-2004

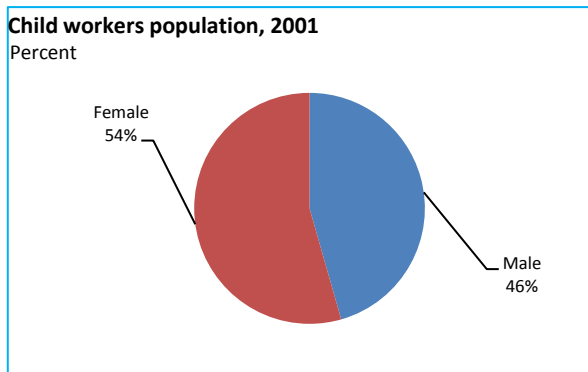


Source: DLHS, 2002-2004

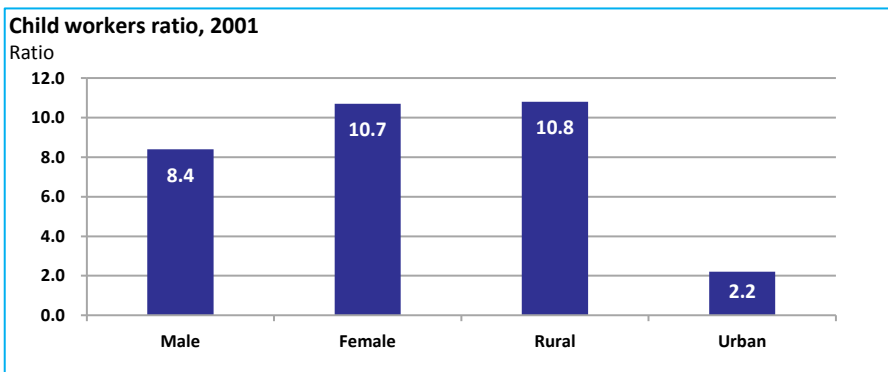


Source: DLHS

CHILD PROTECTION



Source: Census



ENVIRONMENT

Location/Caste	Total	Rural	Urban	SC	ST	Time Period
Households living in dilapidated houses (#)	7484	5978	1506	929	4120	(2001)
Households without electricity (#)	52428	49395	3033	2854	41719	(2001)
Households without latrines (#)	234765	217228	17537	20799	150343	(2001)

Source: Census

Habitation with drinking water access

<40 LPCD	40 to 55 LPCD	With 0 population coverage	With 100% population coverage	With population coverage > 0 and < 100%	Time Period
0	625	-	2482	-	(2009)

Source: IMIS

INFRASTRUCTURE

Proportion of villages having any health facility PHC/SHC/AYUSH (%)	48.5	(2001)	Proportion of villages having at least a primary school (%)	84.5	(2001)
---------------------------------------------------------------------	------	--------	-------------------------------------------------------------	------	--------

Source: Census

