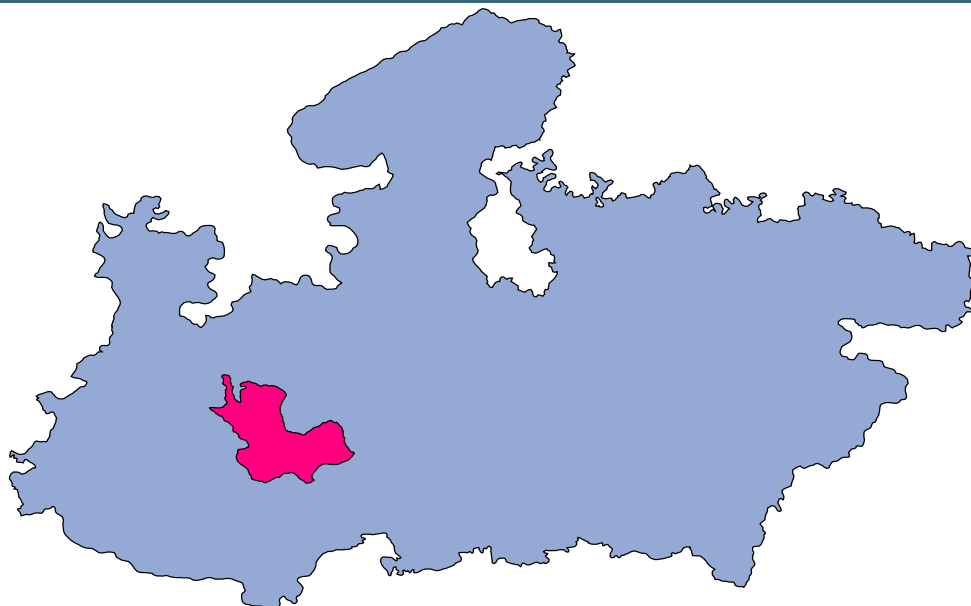




Dewas



MONITORING XI PLAN GOALS



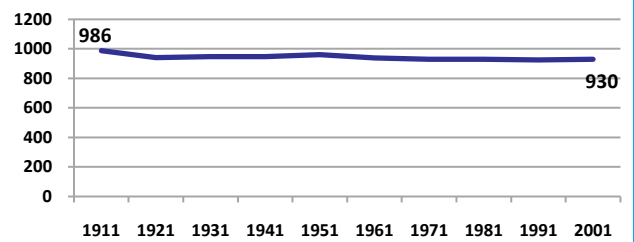
Dewas

DEMOGRAPHICS

| Location/Caste | Total | Rural | Urban | SC | ST | Non SC/ST | Time Period |
|---|-------|-------|-------|-----|-----|-----------|-------------|
| Population size (000) | 1308 | - | - | - | - | - | (2001) |
| Average annual population growth rate (%) | 2.4 | 2.1 | 2.9 | - | - | - | (2001) |
| Decadal growth rate (%) | 26.5 | - | - | - | - | - | (2001) |
| Population density (Persons per Sq Km) | 186 | - | - | - | - | - | (2001) |
| Sex ratio (Females per 1000 males) | 930 | 934 | 918 | 928 | 955 | 927 | (2001) |
| Sex ratio (0-6 years, Females per 1000 males) | 930 | 939 | 903 | 945 | 953 | 912 | (2001) |
| Level of urbanization (%) | 27.4 | - | - | - | - | - | (2001) |

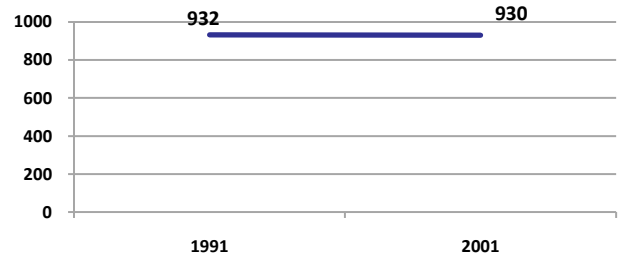
Sex ratio

Females per 1000 males



Sex ratio, 0-6 years

Females per 1000 males



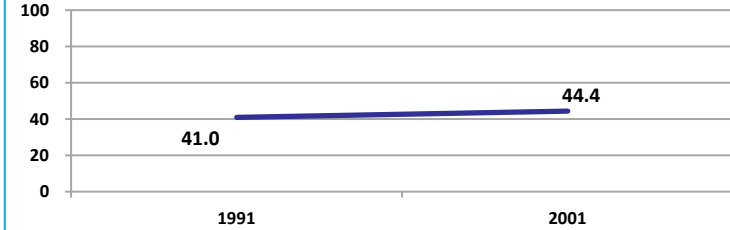
Source: Census

Source: Census

ECONOMY

Work participation rate

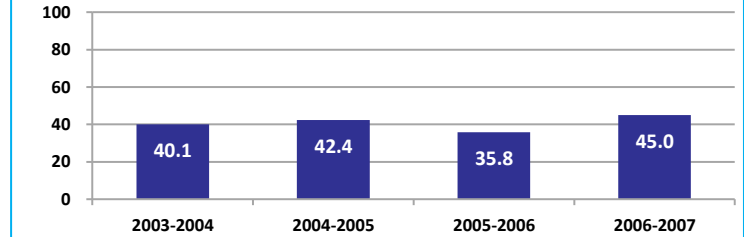
Percent



Source: Census

Net sown area irrigated

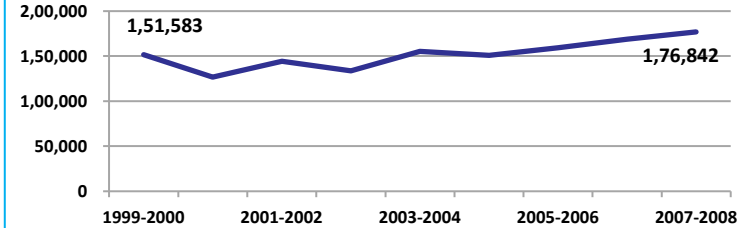
Percent



Source: Census, 2001 Projected

Net district domestic product at constant (1990-2000) prices

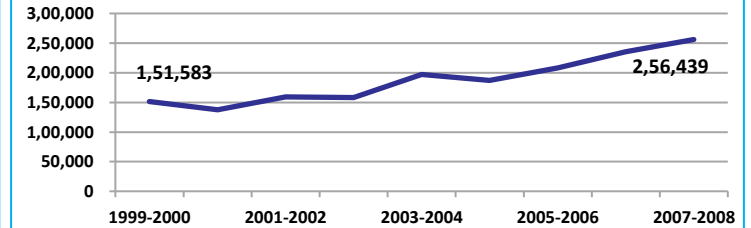
Lakhs



Source: DES, 2009

Net district domestic product at current prices

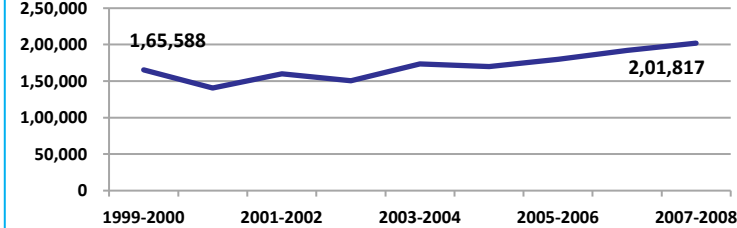
Lakhs



Source: DES, 2009

Gross district domestic Product at constant (1990-2000) prices

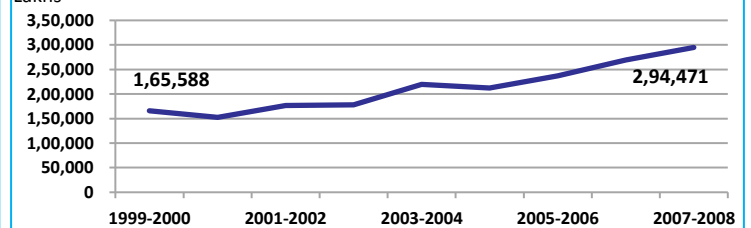
Lakhs



Source: DES, 2009

Gross district domestic product at current prices

Lakhs



Source: DES, 2009



State Planning Commission



Dewas

ECONOMY

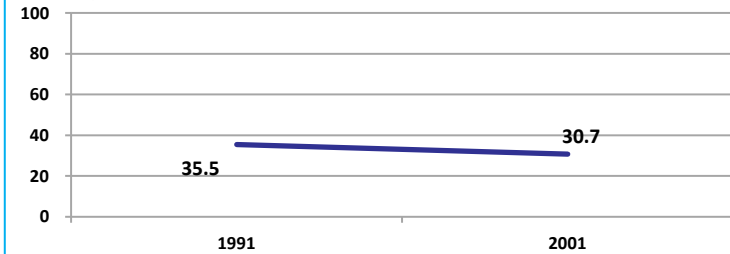
| Location/Caste | Total | Rural | Urban | SC | ST | Non SC/ST | Time Period |
|--|--------|-------|-------|-------|-------|-----------|-------------|
| Industrial working population (%) | 727801 | - | - | - | - | - | (2001) |
| Marginal working population (%) | 11.6 | - | - | - | - | - | (2001) |
| Main working population (%) | 32.8 | - | - | - | - | - | (2001) |
| Farmers and agricultural labour in population (%) | 34.1 | - | - | - | - | - | (2001) |
| Schedule caste population (%) | 18.3 | 19.4 | 15.2 | - | - | - | (2001) |
| Schedule tribe population (%) | 16.4 | 20.4 | 5.9 | - | - | - | (2001) |
| Households having none of the six household assets (Radio/Transistor, Television, Telephone, Bicycle, Two wheeler, Four wheeler) (#) | 85650 | 75979 | 9671 | 22456 | 21568 | - | (2001) |

Source: Census

EDUCATION

Gender gap in literacy rate (Male-Female)

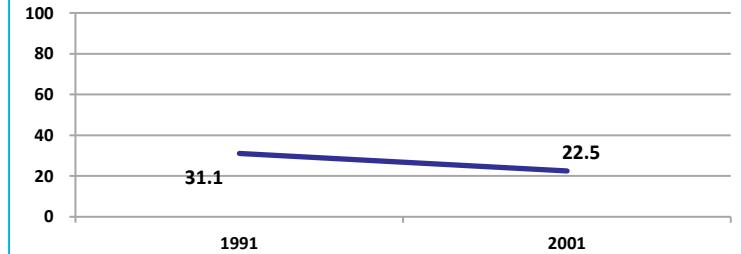
Percentage points



Source: Census

Gap in literacy rate by residence (Urban-Rural)

Percentage points



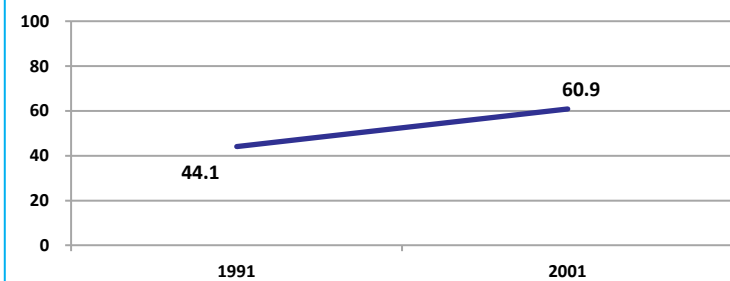
Source: Census

| Location/Sex/Caste | Total | Male | Female | Rural | Urban | SC | ST | Time Period |
|---|-------|-------|--------|-------|-------|-----|------|-------------|
| Primary gross enrolment ratio ** | 102.7 | 102.5 | 103.0 | - | - | - | - | (2008-2009) |
| Upper primary gross enrolment ratio ** | 99.6 | 99.8 | 99.3 | - | - | - | - | (2008-2009) |
| Elementary gross enrolment ratio ** | 101.8 | 101.6 | 101.9 | - | - | - | - | (2008-2009) |
| Primary dropout rate (%) ** | - | 10.6 | 13.3 | - | - | - | - | (2008-2009) |
| Ratio of literate women to men (15-24 years) * | 0.6 | - | - | 0.5 | 0.8 | 0.5 | 0.4 | (2001) |
| Persons age 15+ completed primary education (%) * | 43.4 | 59.1 | 26.6 | 34.4 | 65.8 | 8.3 | 25.6 | (2001) |

Source: Census */Rajya Shiksha Kendra **

Literacy rate 7+

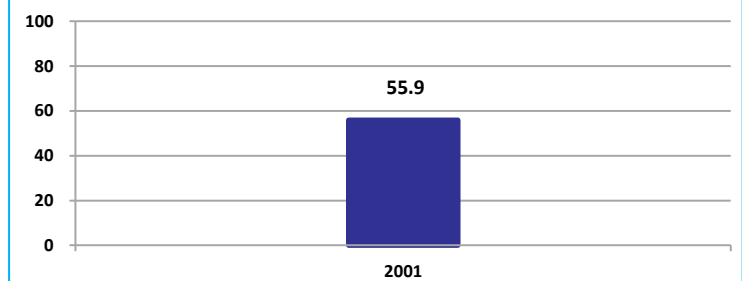
Percent



Source: Census

Literacy rate 15+

Percent



Source: Census



Dewas

HEALTH & NUTRITION

| | | | | | |
|--|------|---|------|--|------|
| Contraceptive prevalence rate (15-44 yr) | 55.2 | Fully immunized children (12-23 months) | 31.8 | Prevalence of underweight (moderate and severe, <6 yr) | 56.9 |
|--|------|---|------|--|------|

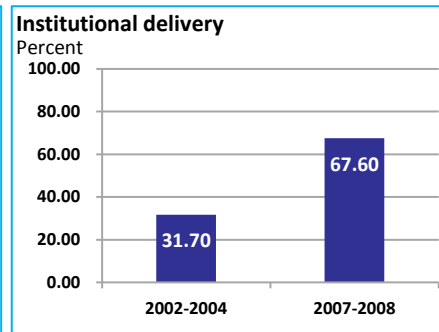
Source: DLHS, 2002-2004



Source: DLHS, 2002-2004

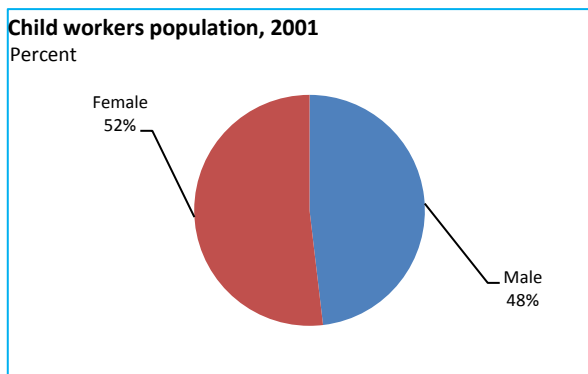


Source: DLHS, 2002-2004

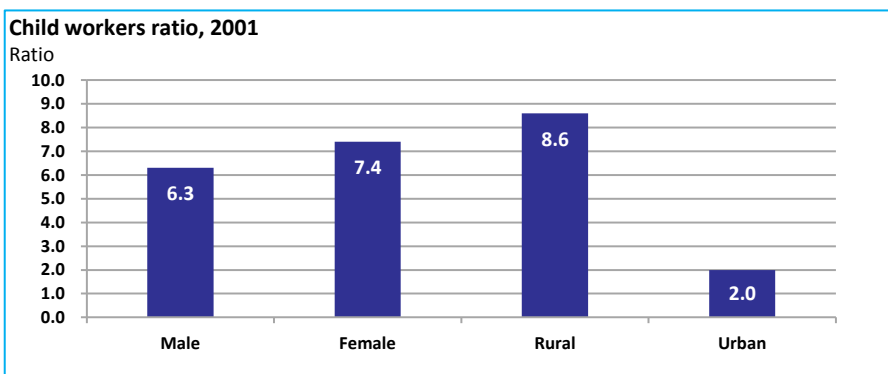


Source: DLHS

CHILD PROTECTION



Source: Census



ENVIRONMENT

| Location/Caste | Total | Rural | Urban | SC | ST | Time Period |
|---|--------|--------|-------|-------|-------|-------------|
| Households living in dilapidated houses (#) | 9695 | 7950 | 1745 | 2790 | 2959 | (2001) |
| Households without electricity (#) | 24234 | 21688 | 2546 | 6273 | 5572 | (2001) |
| Households without latrines (#) | 159462 | 140206 | 19256 | 39263 | 32620 | (2001) |

Source: Census

Habitation with drinking water access

| <40 LPCD | 40 to 55 LPCD | With 0 population coverage | With 100% population coverage | With population coverage > 0 and < 100% | Time Period |
|----------|---------------|----------------------------|-------------------------------|---|-------------|
| 0 | 340 | - | 429 | - | (2009) |

Source: IMIS

INFRASTRUCTURE

| | | | | | |
|---|------|--------|---|------|--------|
| Proportion of villages having any health facility PHC/SHC/AYUSH (%) | 31.6 | (2001) | Proportion of villages having at least a primary school (%) | 83.9 | (2001) |
|---|------|--------|---|------|--------|

Source: Census

