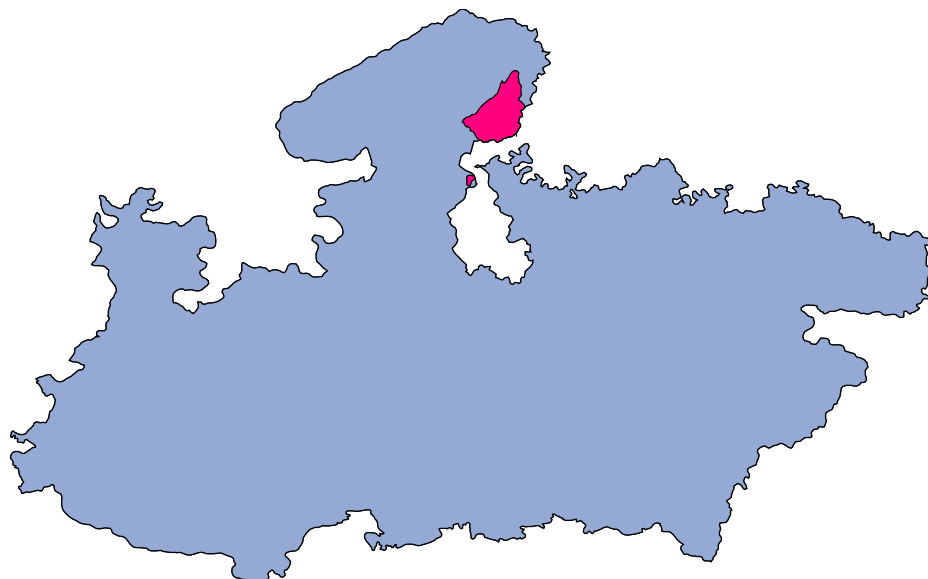




Datia



MONITORING XI PLAN GOALS



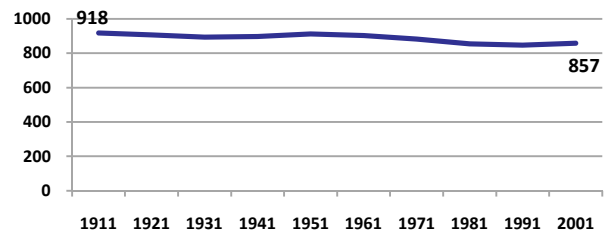
Datia

DEMOGRAPHICS

Location/Caste	Total	Rural	Urban	SC	ST	Non SC/ST	Time Period
Population size (000)	628	-	-	-	-	-	(2001)
Average annual population growth rate (%)	2.0	1.8	2.7	-	-	-	(2001)
Decadal growth rate (%)	21.9	-	-	-	-	-	(2001)
Population density (Persons per Sq Km)	233	-	-	-	-	-	(2001)
Sex ratio (Females per 1000 males)	857	854	870	848	910	861	(2001)
Sex ratio (0-6 years, Females per 1000 males)	874	876	869	993	996	945	(2001)
Level of urbanization (%)	21.9	-	-	-	-	-	(2001)

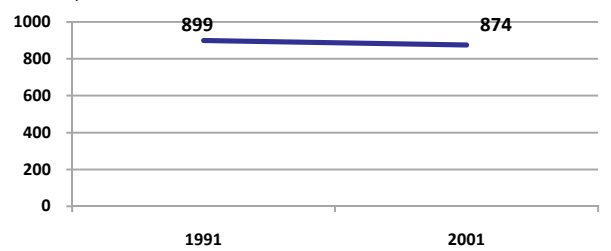
Sex ratio

Females per 1000 males



Sex ratio, 0-6 years

Females per 1000 males



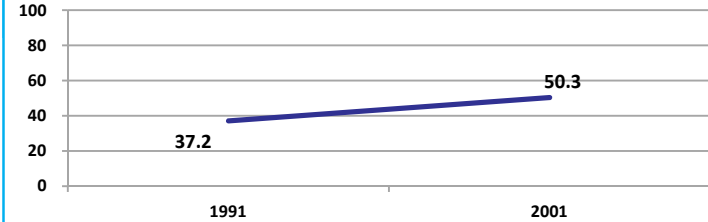
Source: Census

Source: Census

ECONOMY

Work participation rate

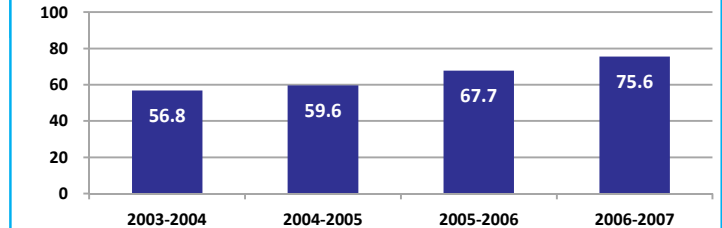
Percent



Source: Census

Net sown area irrigated

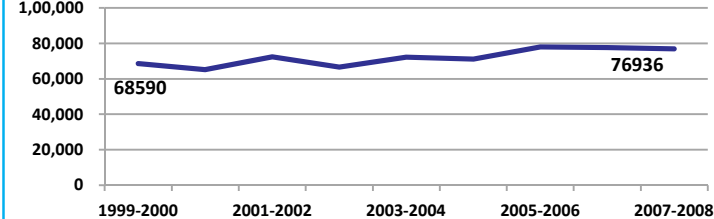
Percent



Source: Census, 2001 Projected

Net District Domestic Product at constant (1990-2000) prices

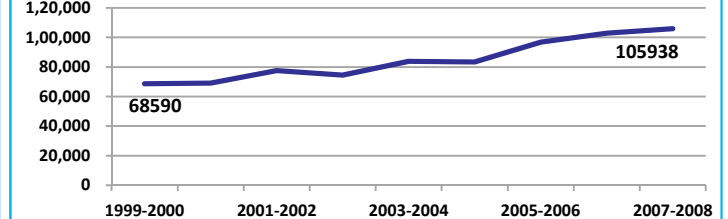
Lakhs



Source: DES, 2009

Net District Domestic Product at current prices

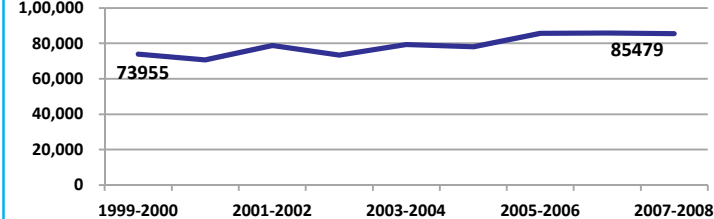
Lakhs



Source: DES, 2009

Gross District Domestic Product at constant (1990-2000) prices

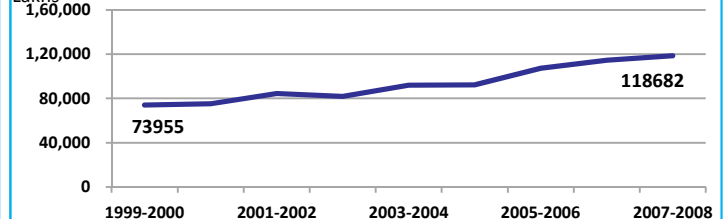
Lakhs



Source: DES, 2009

Gross District Domestic Product at current prices

Lakhs



Source: DES, 2009



State Planning Commission



Datia

ECONOMY

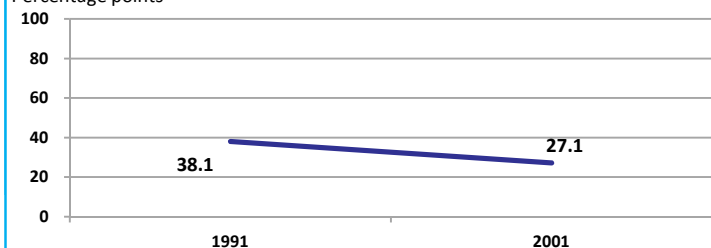
Location/Caste	Total	Rural	Urban	SC	ST	Non SC/ST	Time Period
Industrial working population (%)	312220	-	-	-	-	-	(2001)
Marginal working population (%)	14.3	-	-	-	-	-	(2001)
Main working population (%)	36.0	-	-	-	-	-	(2001)
Farmers and agricultural labour in population (%)	39.3	-	-	-	-	-	(2001)
Schedule caste population (%)	24.9	26.9	18.1	-	-	-	(2001)
Schedule tribe population (%)	1.6	1.7	1.2	-	-	-	(2001)
Households having none of the six household assets (Radio/Transistor, Television, Telephone, Bicycle, Two wheeler, Four wheeler) (#)	42860	38017	4843	14263	1160	-	(2001)

Source: Census

EDUCATION

Gender gap in literacy rate (Male-Female)

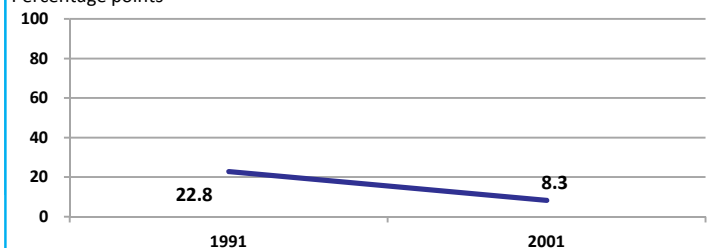
Percentage points



Source: Census

Gap in literacy rate by residence (Urban-Rural)

Percentage points



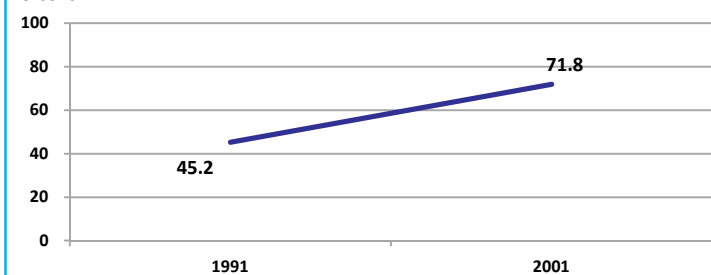
Source: Census

Location/Sex/Caste	Total	Male	Female	Rural	Urban	SC	ST	Time Period
Primary gross enrolment ratio **	102.5	102.5	102.4	-	-	-	-	(2008-2009)
Upper primary gross enrolment ratio **	113.5	114.0	112.9	-	-	-	-	(2008-2009)
Elementary gross enrolment ratio **	105.8	106.0	105.5	-	-	-	-	(2008-2009)
Primary dropout rate (%) **	-	9.8	10.2	-	-	-	-	(2008-2009)
Ratio of literate women to men (15-24 years) *	0.6	-	-	0.5	0.7	0.5	0.5	(2001)
Persons age 15+ completed primary education (%) *	48.6	65.7	28.6	43.2	66.9	10.5	28.3	(2001)

Source: Census */Rajya Shiksha Kendra **

Literacy rate 7+

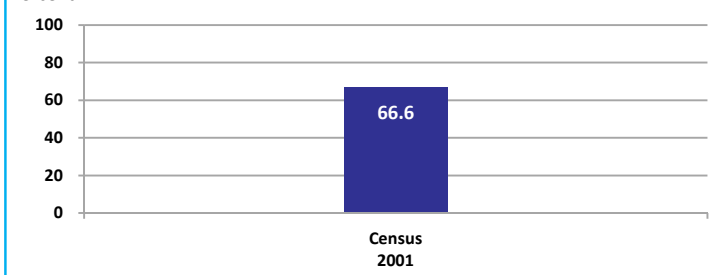
Percent



Source: Census

Literacy rate 15+

Percent

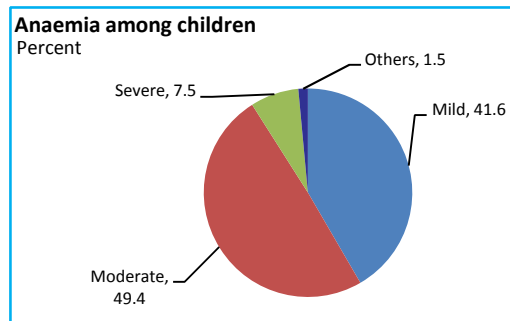


Datia

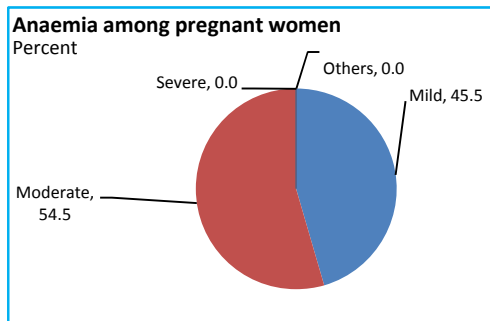
HEALTH & NUTRITION

Contraceptive prevalence rate (15-44 yr)	53.7	Fully immunized children (12-23 months)	20.0	Prevalence of underweight (moderate and severe, <6 yr)	55.1
--	------	---	------	--	------

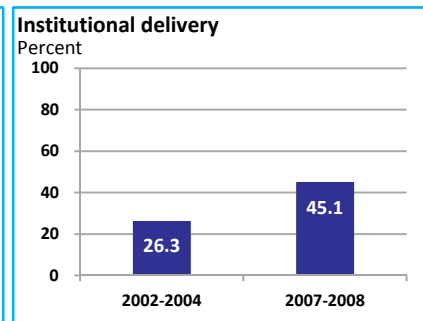
Source: DLHS, 2002-2004



Source: DLHS, 2002-2004

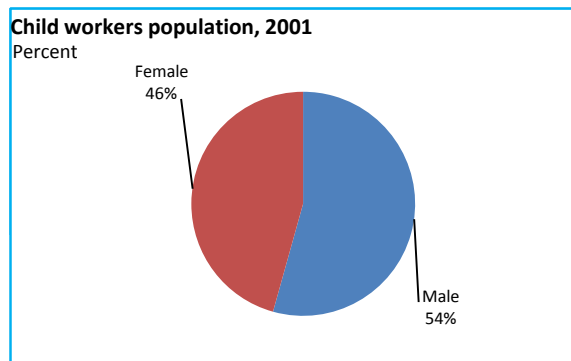


Source: DLHS, 2002-2004

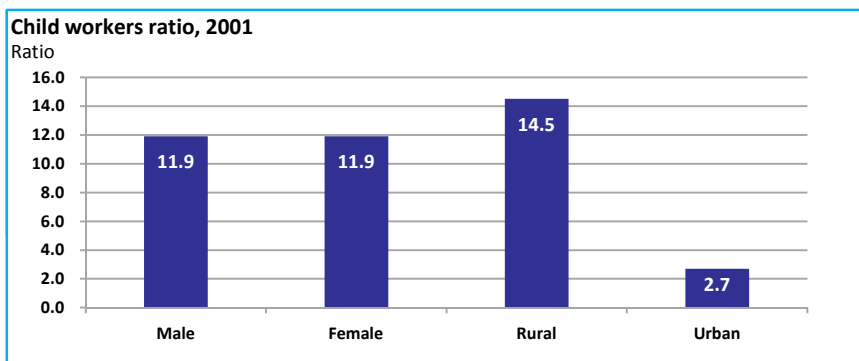


Source: DLHS

CHILD PROTECTION



Source: Census



ENVIRONMENT

Location/Caste	Total	Rural	Urban	SC	ST	Time Period
Households living in dilapidated houses (#)	2382	1766	616	819	254	(2001)
Households without electricity (#)	34764	31910	2854	9278	676	(2001)
Households without latrines (#)	83918	75683	8235	26269	1953	(2001)

Source: Census

Habitation with drinking water access					
<40 LPCD	40 to 55 LPCD	With 0 population coverage	With 100% population coverage	With population coverage > 0 and < 100%	Time Period
25	175	-	818	-	(2009)

Source: IMIS

INFRASTRUCTURE

Proportion of villages having any health facility PHC/SHC/AYUSH (%)	32.7	(2001)	Proportion of villages having at least a primary school (%)	85.0	(2001)
---	------	--------	---	------	--------

Source: Census

