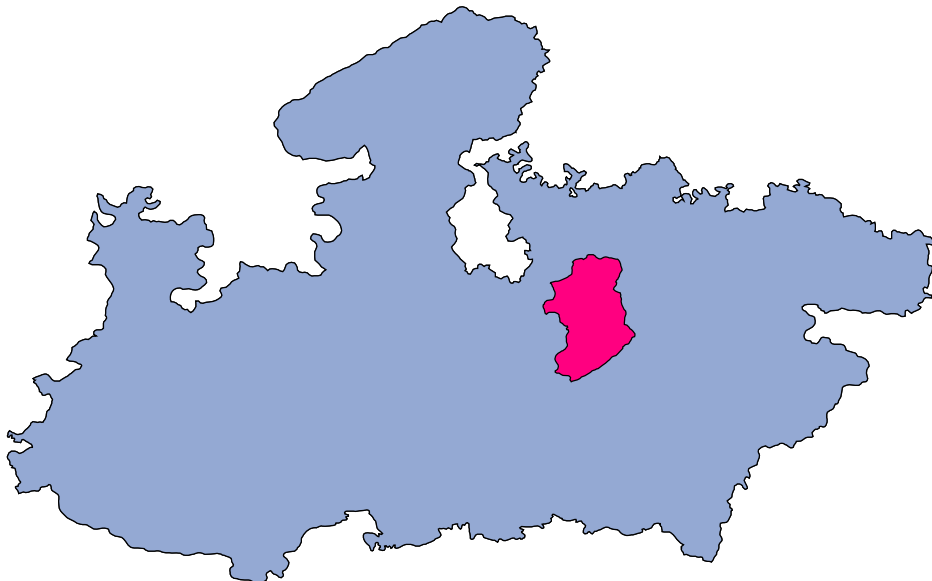




# Damoh



## MONITORING XI PLAN GOALS



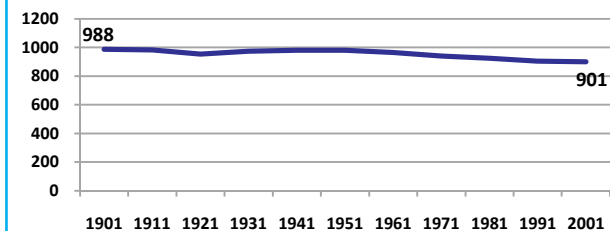
## Damoh

### DEMOGRAPHICS

Location/Caste	Total	Rural	Urban	SC	ST	Non SC/ST	Time Period
Population size (000)	1084	-	-	-	-	-	(2001)
Average annual population growth rate (%)	1.9	1.8	2.3	-	-	-	(2001)
Decadal growth rate (%)	20.7	-	-	-	-	-	(2001)
Population density (Persons per Sq Km)	148	-	-	-	-	-	(2001)
Sex ratio (Females per 1000 males)	901	901	900	882	950	900	(2001)
Sex ratio (0-6 years, Females per 1000 males)	935	937	923	920	875	822	(2001)
Level of urbanization (%)	18.9	-	-	-	-	-	(2001)

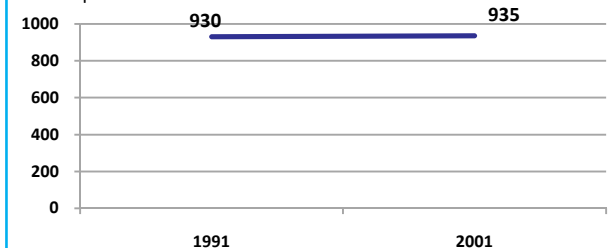
#### Sex ratio

Females per 1000 males



#### Sex ratio, 0-6 years

Females per 1000 males



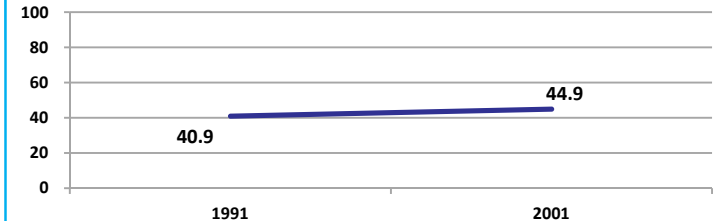
Source: Census

Source: Census

### ECONOMY

#### Work participation rate

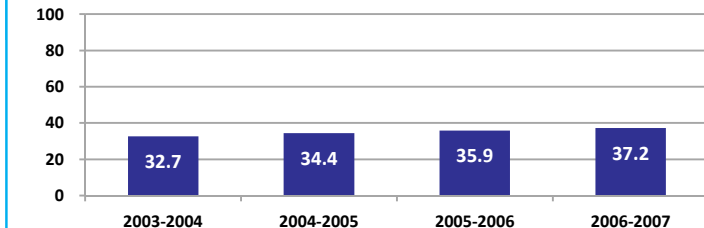
Percent



Source: Census

#### Net sown area irrigated

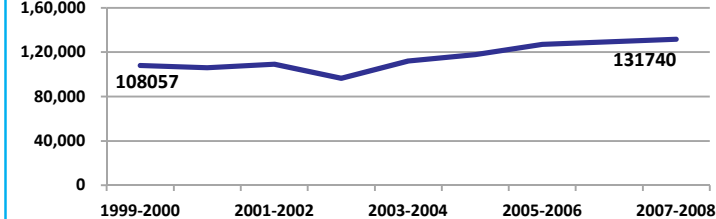
Percent



Source: Census, 2001 Projected

#### Net District Domestic Product at constant (1990-2000) prices

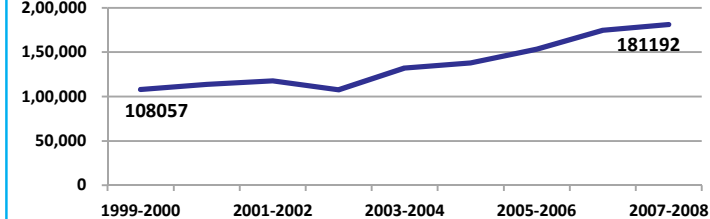
Lakhs



Source: DES, 2009

#### Net District Domestic Product at current prices

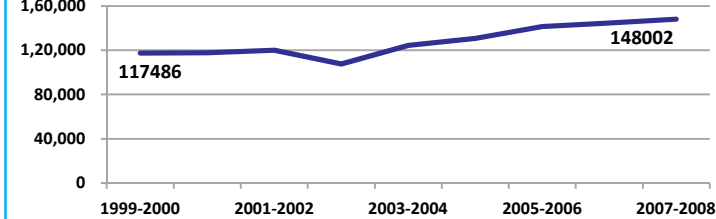
Lakhs



Source: DES, 2009

#### Gross District Domestic Product at constant (1990-2000) prices

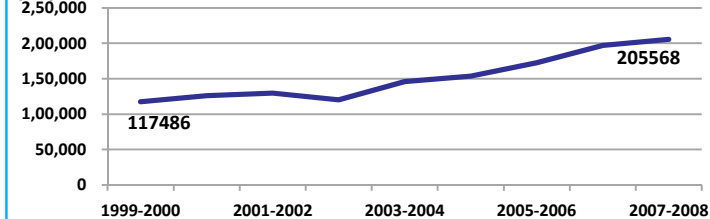
Lakhs



Source: DES, 2009

#### Gross District Domestic Product at current prices

Lakhs



Source: DES, 2009



## Damoh

### ECONOMY

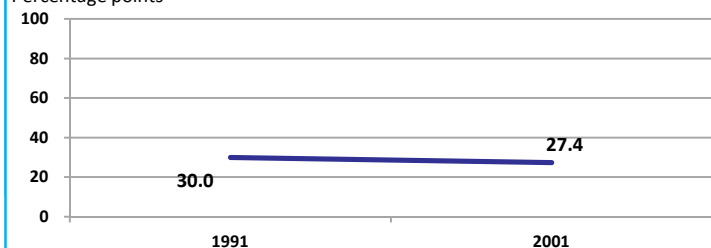
Location/Caste	Total	Rural	Urban	SC	ST	Non SC/ST	Time Period
Industrial working population (%)	597463	-	-	-	-	-	(2001)
Marginal working population (%)	12.7	-	-	-	-	-	(2001)
Main working population (%)	32.2	-	-	-	-	-	(2001)
Farmers and agricultural labour in population (%)	25.9	-	-	-	-	-	(2001)
Schedule caste population (%)	19.5	19.5	19.5	-	-	-	(2001)
Schedule tribe population (%)	12.6	15.0	2.1	-	-	-	(2001)
Households having none of the six household assets (Radio/Transistor, Television, Telephone, Bicycle, Two wheeler, Four wheeler) (#)	118141	109313	8828	29661	21798	-	(2001)

Source: Census

### EDUCATION

#### Gender gap in literacy rate (Male-Female)

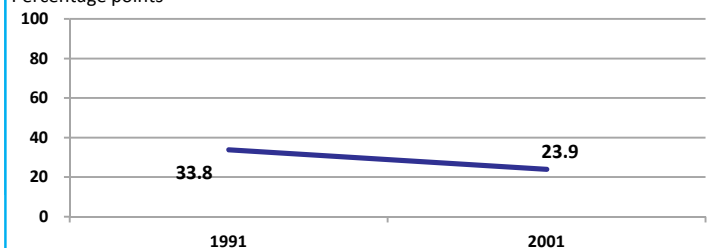
Percentage points



Source: Census

#### Gap in literacy rate by residence (Urban-Rural)

Percentage points



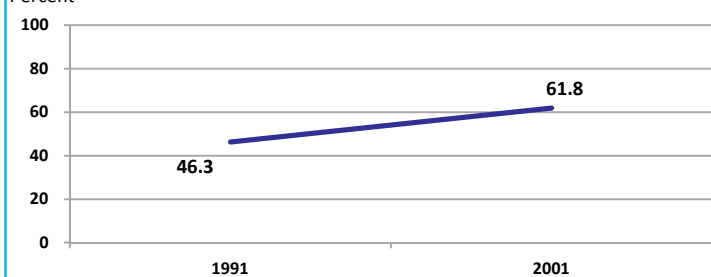
Source: Census

Location/Sex/Caste	Total	Male	Female	Rural	Urban	SC	ST	Time Period
Primary gross enrolment ratio **	102.1	103.2	100.9	-	-	-	-	(2008-2009)
Upper primary gross enrolment ratio **	103.5	103.4	103.5	-	-	-	-	(2008-2009)
Elementary gross enrolment ratio **	102.5	103.3	101.7	-	-	-	-	(2008-2009)
Primary dropout rate (%) **	-	14.5	15.8	-	-	-	-	(2008-2009)
Ratio of literate women to men (15-24 years) *	0.6	-	-	0.5	0.7	0.5	0.5	(2001)
Persons age 15+ completed primary education (%) *	42.2	55.1	27.6	35.4	69.3	8.7	9.7	(2001)

Source: Census \*/Rajya Shiksha Kendra \*\*

#### Literacy rate 7+

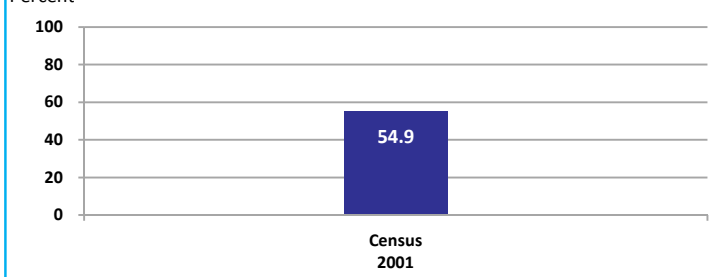
Percent



Source: Census

#### Literacy rate 15+

Percent

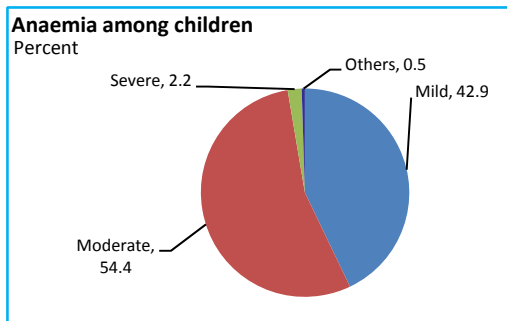


## Damoh

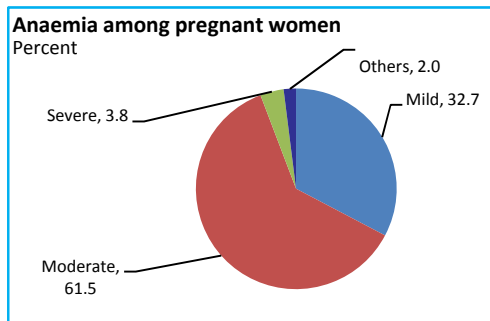
### HEALTH & NUTRITION

Contraceptive prevalence rate (15-44 yr)	58.1	Fully immunized children (12-23 months)	20.2	Prevalence of underweight (moderate and severe, <6 yr)	44.3
--	------	---	------	--	------

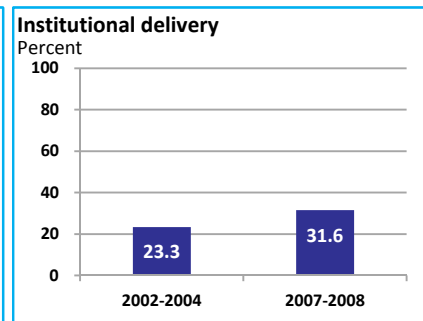
Source: DLHS, 2002-2004



Source: DLHS, 2002-2004

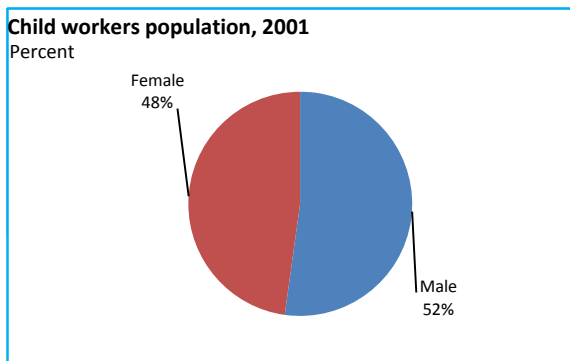


Source: DLHS, 2002-2004

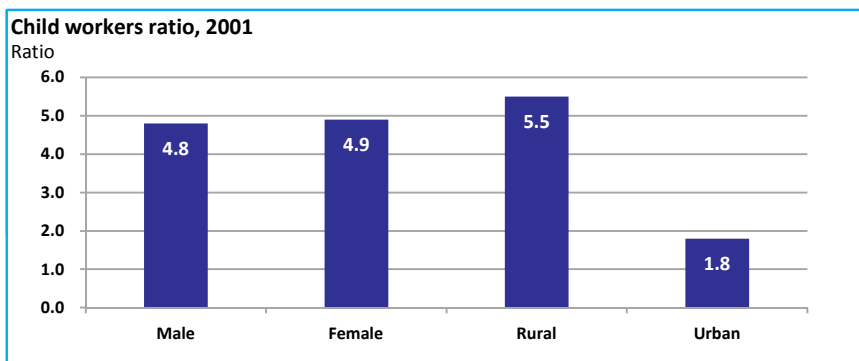


Source: DLHS

### CHILD PROTECTION



Source: Census



### ENVIRONMENT

Location/Caste	Total	Rural	Urban	SC	ST	Time Period
Households living in dilapidated houses (#)	8317	7298	1019	2072	2011	(2001)
Households without electricity (#)	78562	74913	3649	17588	17151	(2001)
Households without latrines (#)	191836	174421	17415	45431	28194	(2001)

Source: Census

**Habitation with drinking water access**

<40 LPCD	40 to 55 LPCD	With 0 population coverage	With 100% population coverage	With population coverage > 0 and < 100%	Time Period
0	100	-	444	-	(2009)

Source: IMIS

### INFRASTRUCTURE

Proportion of villages having any health facility PHC/SHC/AYUSH (%)	22.4	(2001)	Proportion of villages having at least a primary school (%)	75.0	(2001)
---	------	--------	---	------	--------

Source: Census

