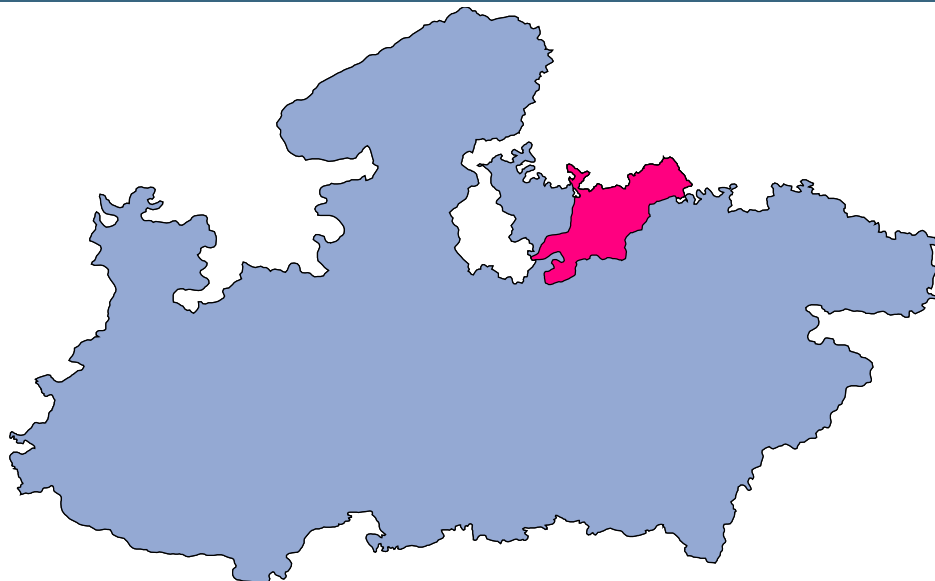




Chhatarpur



MONITORING XI PLAN GOALS



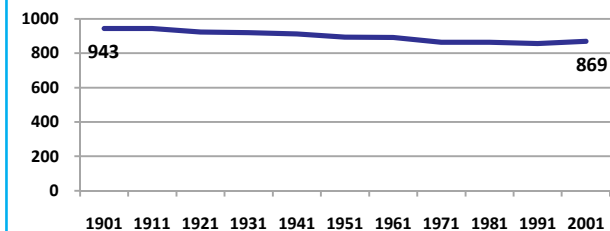
Chhatarpur

DEMOGRAPHICS

Location/Caste	Total	Rural	Urban	SC	ST	Non SC/ST	Time Period
Population size (000)	1475	-	-	-	-	-	(2001)
Average annual population growth rate (%)	2.4	2.1	3.7	-	-	-	(2001)
Decadal growth rate (%)	27.3	-	-	-	-	-	(2001)
Population density (Persons per Sq Km)	170	-	-	-	-	-	(2001)
Sex ratio (Females per 1000 males)	869	868	874	867	919	868	(2001)
Sex ratio (0-6 years, Females per 1000 males)	917	920	901	851	973	842	(2001)
Level of urbanization (%)	22.0	-	-	-	-	-	(2001)

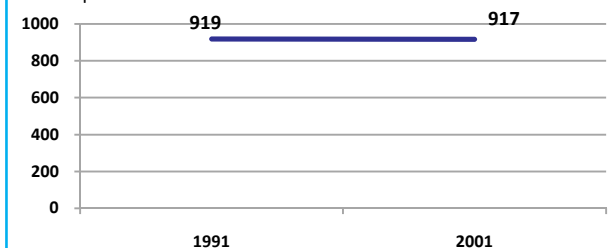
Sex ratio

Females per 1000 males



Sex ratio, 0-6 years

Females per 1000 males



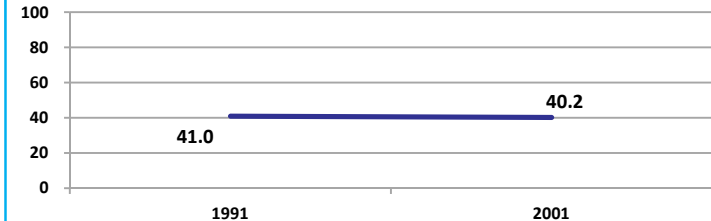
Source: Census

Source: Census

ECONOMY

Work participation rate

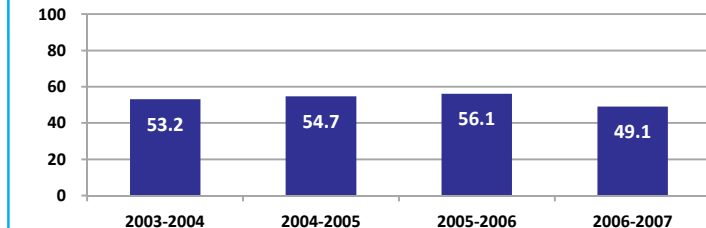
Percent



Source: Census

Net sown area irrigated

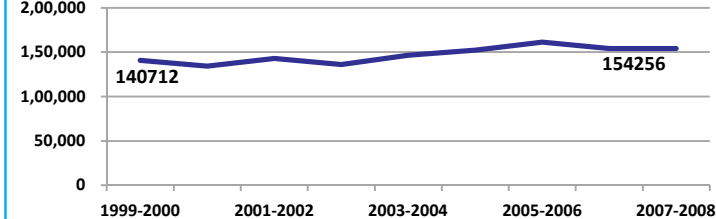
Percent



Source: Census, 2001 Projected

Net District Domestic Product at constant (1990-2000) prices

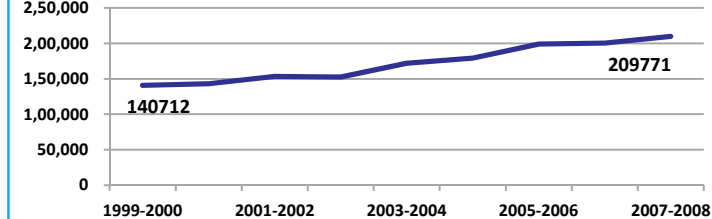
Lakhs



Source: DES, 2009

Net District Domestic Product at current prices

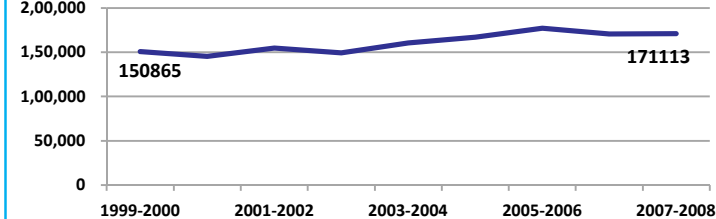
Lakhs



Source: DES, 2009

Gross District Domestic Product at constant (1990-2000) prices

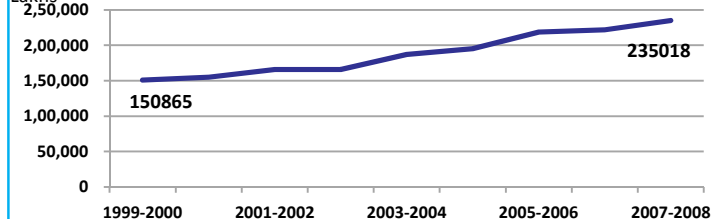
Lakhs



Source: DES, 2009

Gross District Domestic Product at current prices

Lakhs



Source: DES, 2009



State Planning Commission



Chhatarpur

ECONOMY

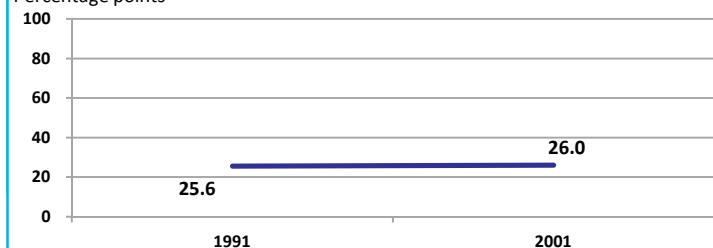
Location/Caste	Total	Rural	Urban	SC	ST	Non SC/ST	Time Period
Industrial working population (%)	882253	-	-	-	-	-	(2001)
Marginal working population (%)	10.2	-	-	-	-	-	(2001)
Main working population (%)	29.9	-	-	-	-	-	(2001)
Farmers and agricultural labour in population (%)	30.2	-	-	-	-	-	(2001)
Schedule caste population (%)	23.3	24.9	17.6	-	-	-	(2001)
Schedule tribe population (%)	3.5	4.2	0.9	-	-	-	(2001)
Households having none of the six household assets (Radio/Transistor, Television, Telephone, Bicycle, Two wheeler, Four wheeler) (#)	93970	83645	10325	29936	7173	-	(2001)

Source: Census

EDUCATION

Gender gap in literacy rate (Male-Female)

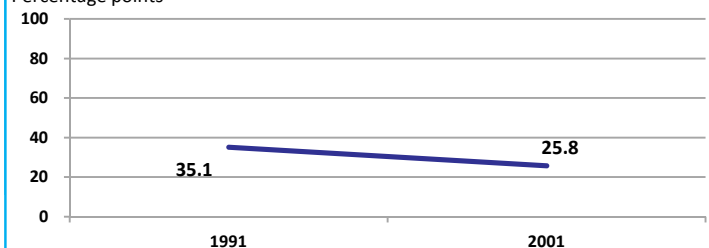
Percentage points



Source: Census

Gap in literacy rate by residence (Urban-Rural)

Percentage points



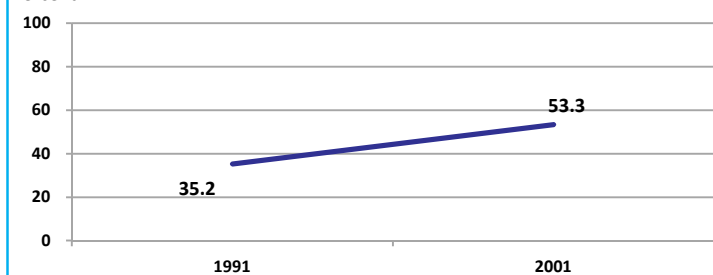
Source: Census

Location/Sex/Caste	Total	Male	Female	Rural	Urban	SC	ST	Time Period
Primary gross enrolment ratio **	99.1	99.0	99.2	-	-	-	-	(2008-2009)
Upper primary gross enrolment ratio **	99.2	99.2	99.2	-	-	-	-	(2008-2009)
Elementary gross enrolment ratio **	99.1	99.1	99.2	-	-	-	-	(2008-2009)
Primary dropout rate (%) **	-	23.0	26.6	-	-	-	-	(2008-2009)
Ratio of literate women to men (15-24 years) *	0.5	-	-	0.4	0.7	0.3	0.3	(2001)
Persons age 15+ completed primary education (%) *	37.3	49.1	23.6	29.1	64.2	8.4	32.1	(2001)

Source: Census */Rajya Shiksha Kendra **

Literacy rate 7+

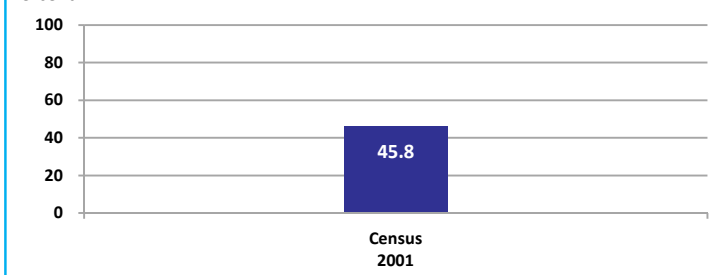
Percent



Source: Census

Literacy rate 15+

Percent

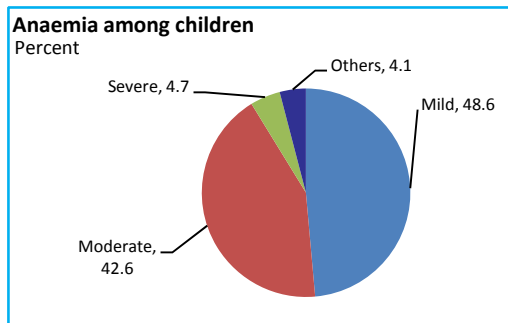


Chhatarpur

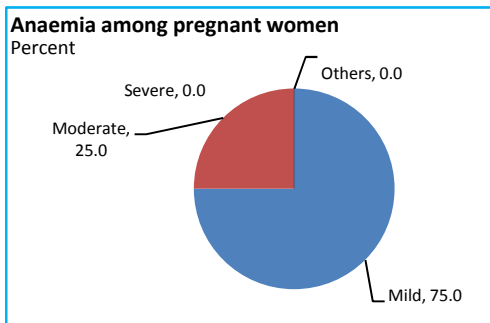
HEALTH & NUTRITION

Contraceptive prevalence rate (15-44 yr)	34.0	Fully immunized children (12-23 months)	29.9	Prevalence of underweight (moderate and severe, <6 yr)	60.8
--	------	---	------	--	------

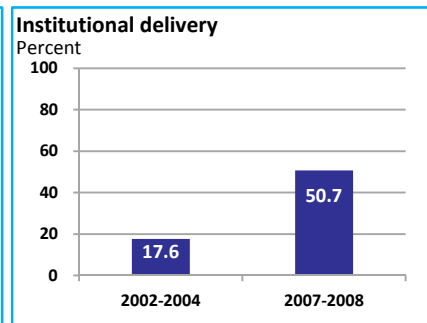
Source: DLHS, 2002-2004



Source: DLHS, 2002-2004

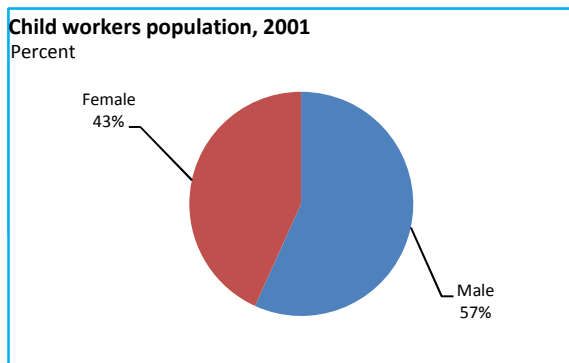


Source: DLHS, 2002-2004

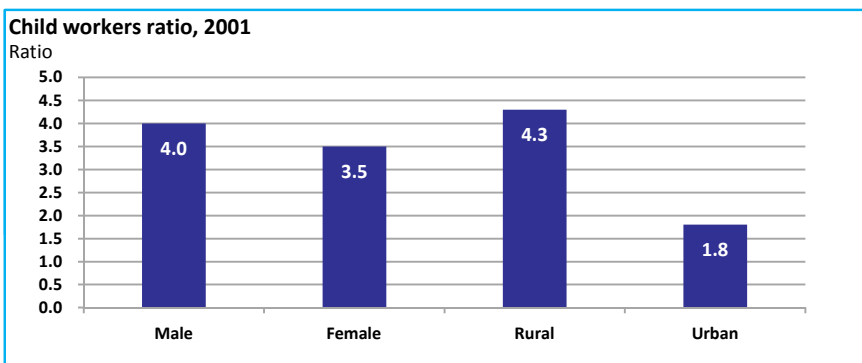


Source: DLHS

CHILD PROTECTION



Source: Census



ENVIRONMENT

Location/Caste	Total	Rural	Urban	SC	ST	Time Period
Households living in dilapidated houses (#)	5622	4542	1080	1762	818	(2001)
Households without electricity (#)	140935	131284	9651	41410	8746	(2001)
Households without latrines (#)	223477	198012	25465	65552	11645	(2001)

Source: Census

Habitation with drinking water access

<40 LPCD	40 to 55 LPCD	With 0 population coverage	With 100% population coverage	With population coverage > 0 and < 100%	Time Period
0	125	-	744	-	(2009)

Source: IMIS

INFRASTRUCTURE

Proportion of villages having any health facility PHC/SHC/AYUSH (%)	34.3	(2001)	Proportion of villages having at least a primary school (%)	81.6	(2001)
---	------	--------	---	------	--------

Source: Census

