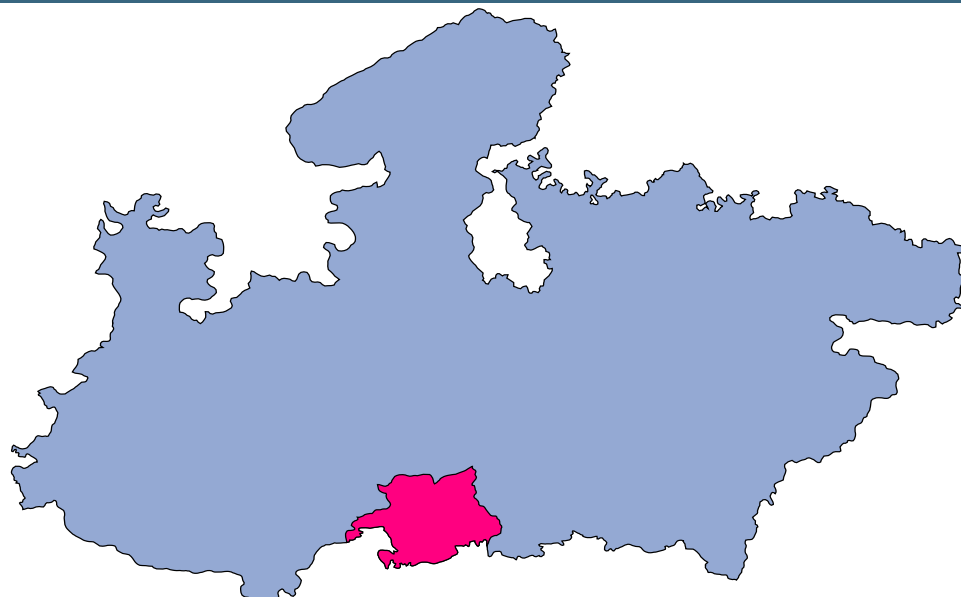




Betul



MONITORING XI PLAN GOALS



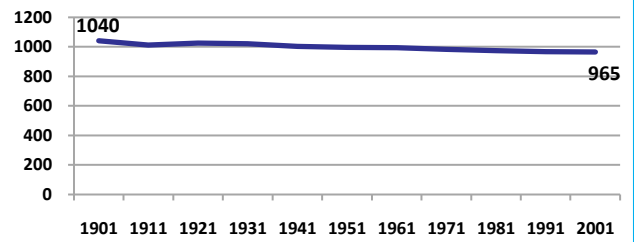
Betul

DEMOGRAPHICS

Location/Caste	Total	Rural	Urban	SC	ST	Non SC/ST	Time Period
Population size (000)	1395	-	-	-	-	-	(2001)
Average annual population growth rate (%)	1.7	1.7	1.6	-	-	-	(2001)
Decadal growth rate (%)	18.1	-	-	-	-	-	(2001)
Population density (Persons per Sq Km)	139	-	-	-	-	-	(2001)
Sex ratio (Females per 1000 males)	965	977	916	948	994	947	(2001)
Sex ratio (0-6 years, Females per 1000 males)	969	977	922	920	936	945	(2001)
Level of urbanization (%)	18.6	-	-	-	-	-	(2001)

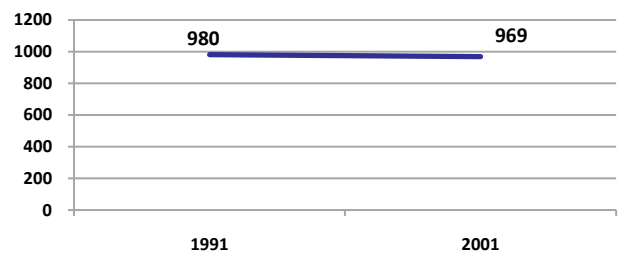
Sex ratio

Females per 1000 males



Sex ratio, 0-6 years

Females per 1000 males



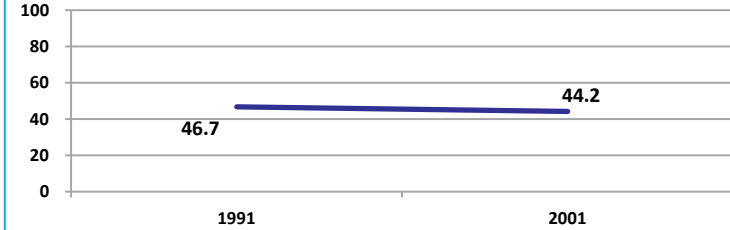
Source: Census

Source: Census

ECONOMY

Work participation rate

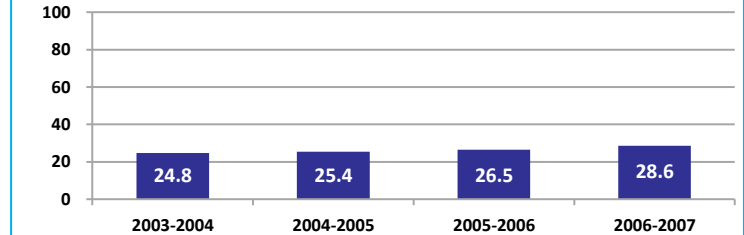
Percent



Source: Census

Net sown area irrigated

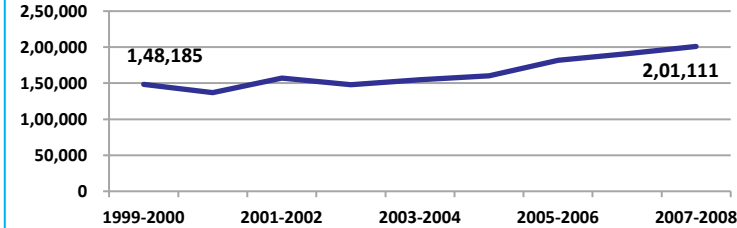
Percent



Source: Census, 2001 Projected

Net district domestic product at constant (1990-2000) prices

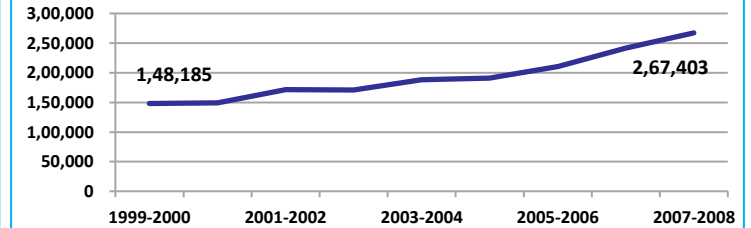
Lakhs



Source: DES, 2009

Net district domestic product at current prices

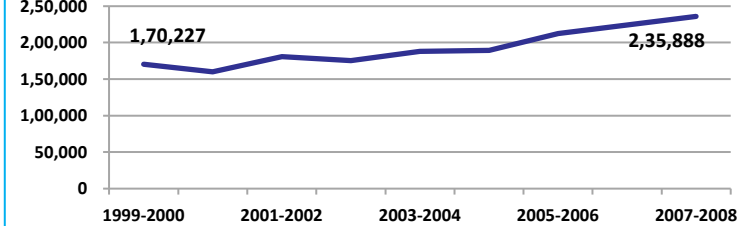
Lakhs



Source: DES, 2009

Gross district domestic Product at constant (1990-2000) prices

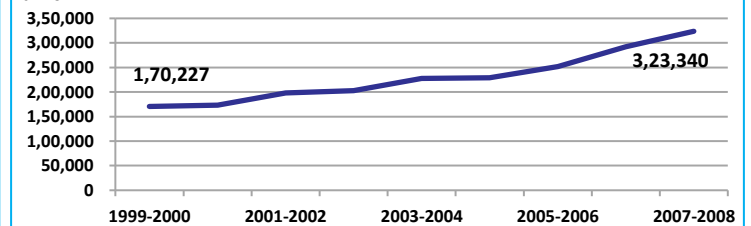
Lakhs



Source: DES, 2009

Gross district domestic product at current prices

Lakhs



Source: DES, 2009



State Planning Commission



Betul

ECONOMY

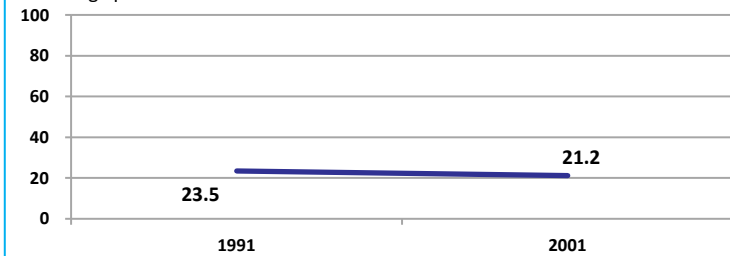
Location/Caste	Total	Rural	Urban	SC	ST	Non SC/ST	Time Period
Industrial working population (%)	779199	-	-	-	-	-	(2001)
Marginal working population (%)	14.1	-	-	-	-	-	(2001)
Main working population (%)	30.0	-	-	-	-	-	(2001)
Farmers and agricultural labour in population (%)	35.1	-	-	-	-	-	(2001)
Schedule caste population (%)	10.6	9.1	17.1	-	-	-	(2001)
Schedule tribe population (%)	39.4	46.7	7.3	-	-	-	(2001)
Households having none of the six household assets (Radio/Transistor, Television, Telephone, Bicycle, Two wheeler, Four wheeler) (#)	121591	113589	8002	14331	63222	-	(2001)

Source: Census

EDUCATION

Gender gap in literacy rate (Male-Female)

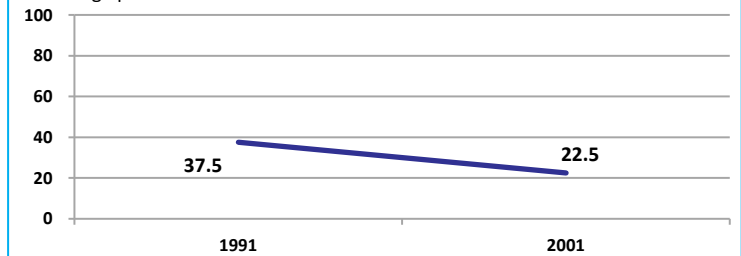
Percentage points



Source: Census

Gap in literacy rate by residence (Urban-Rural)

Percentage points



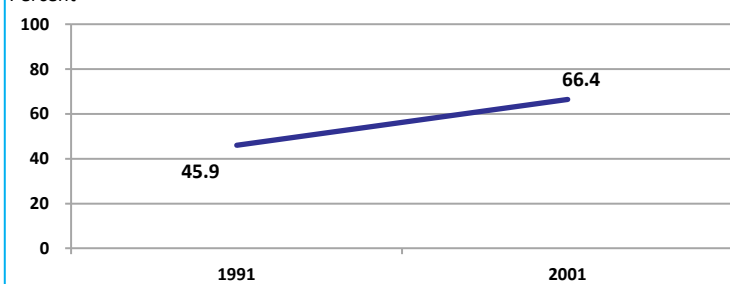
Source: Census

Location/Sex/Caste	Total	Male	Female	Rural	Urban	SC	ST	Time Period
Primary gross enrolment ratio **	101.0	100.8	101.1	-	-	-	-	(2008-2009)
Upper primary gross enrolment ratio **	93.5	93.4	93.6	-	-	-	-	(2008-2009)
Elementary gross enrolment ratio **	98.6	98.4	98.8	-	-	-	-	(2008-2009)
Primary dropout rate (%) **	-	16.3	17.9	-	-	-	-	(2008-2009)
Ratio of literate women to men (15-24 years) *	0.8	-	-	0.8	0.8	0.8	0.6	(2001)
Persons age 15+ completed primary education (%) *	43.1	52.2	33.6	35.6	72.9	22.5	16.2	(2001)

Source: Census */Rajya Shiksha Kendra **

Literacy rate 7+

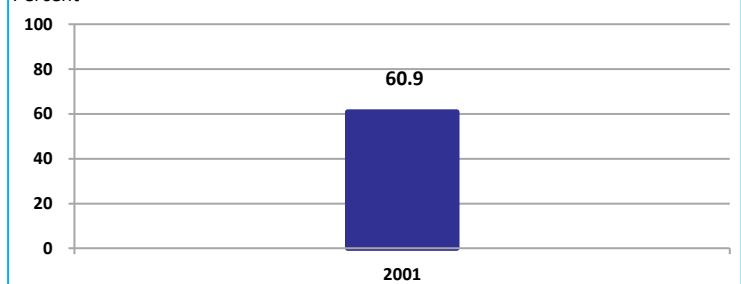
Percent



Source: Census

Literacy rate 15+

Percent



Source: Census

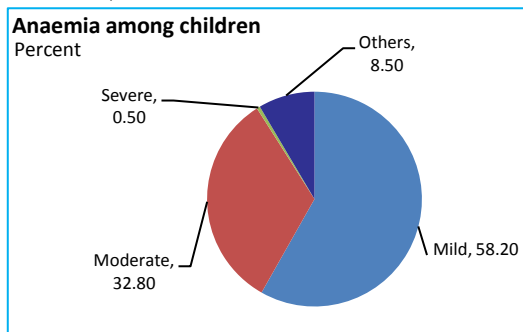


Betul

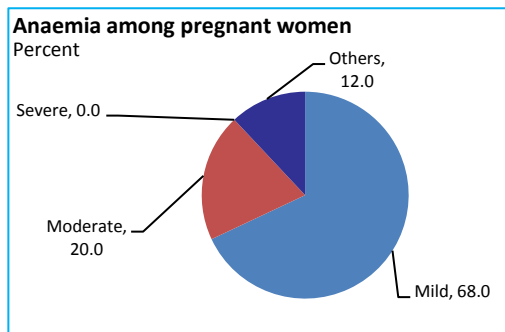
HEALTH & NUTRITION

Contraceptive prevalence rate (15-44 yr)	54.5	Fully immunized children (12-23 months)	18.7	Prevalence of underweight (moderate and severe, <6 yr)	48.9
--	------	---	------	--	------

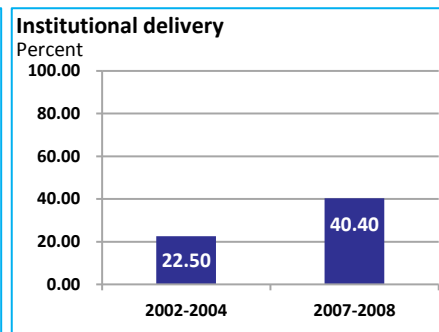
Source: DLHS, 2002-2004



Source: DLHS, 2002-2004

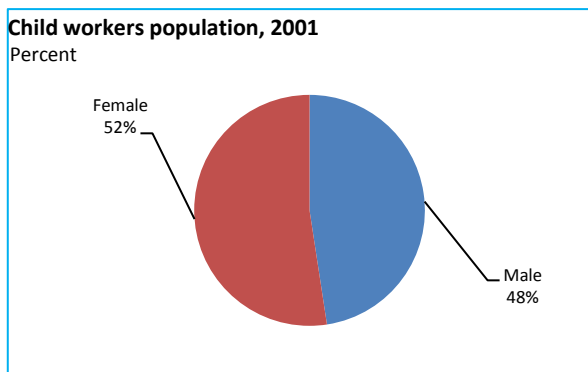


Source: DLHS, 2002-2004

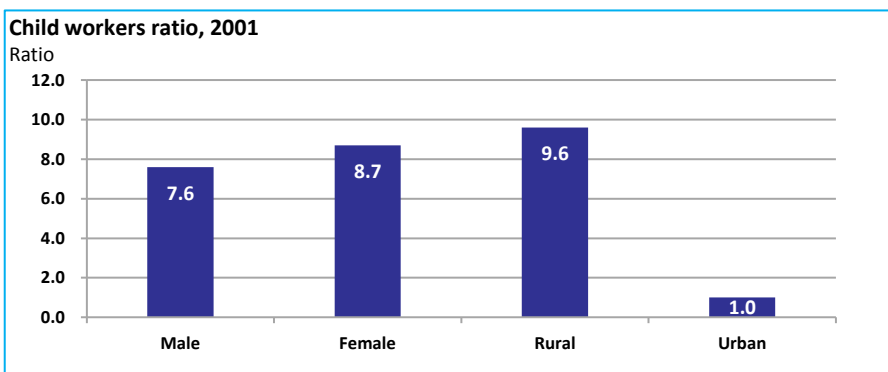


Source: DLHS

CHILD PROTECTION



Source: Census



ENVIRONMENT

Location/Caste	Total	Rural	Urban	SC	ST	Time Period
Households living in dilapidated houses (#)	9866	8047	1819	1460	4278	(2001)
Households without electricity (#)	62552	59937	2615	5470	32766	(2001)
Households without latrines (#)	197956	179233	18723	24487	87848	(2001)

Source: Census

Habitation with drinking water access					
<40 LPCD	40 to 55 LPCD	With 0 population coverage	With 100% population coverage	With population coverage > 0 and < 100%	Time Period
0	175	-	543	-	(2009)

Source: IMIS

INFRASTRUCTURE

Proportion of villages having any health facility PHC/SHC/AYUSH (%)	28.4	(2001)	Proportion of villages having at least a primary school (%)	89.8	(2001)
---	------	--------	---	------	--------

Source: Census

