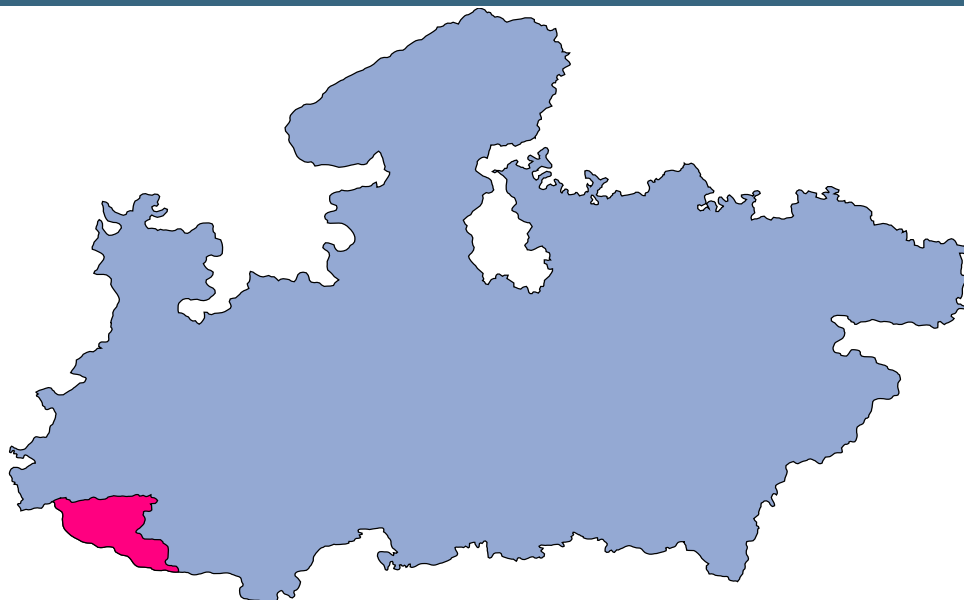




Barwani



MONITORING XI PLAN GOALS



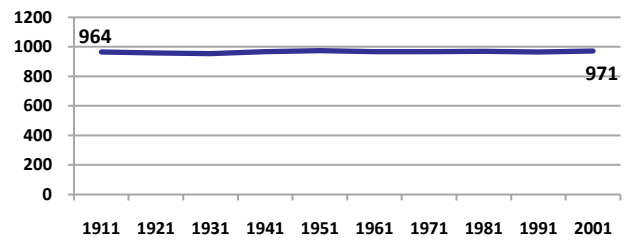
Barwani

DEMOGRAPHICS

| Location/Caste | Total | Rural | Urban | SC | ST | Non SC/ST | Time Period |
|---|-------|-------|-------|-----|-----|-----------|-------------|
| Population size (000) | 1081 | - | - | - | - | - | (2001) |
| Average annual population growth rate (%) | 2.6 | 2.7 | 2.3 | - | - | - | (2001) |
| Decadal growth rate (%) | 29.9 | - | - | - | - | - | (2001) |
| Population density (Persons per Sq Km) | 199 | - | - | - | - | - | (2001) |
| Sex ratio (Females per 1000 males) | 971 | 977 | 940 | 978 | 982 | 949 | (2001) |
| Sex ratio (0-6 years, Females per 1000 males) | 970 | 975 | 933 | 959 | 973 | 848 | (2001) |
| Level of urbanization (%) | 14.6 | - | - | - | - | - | (2001) |

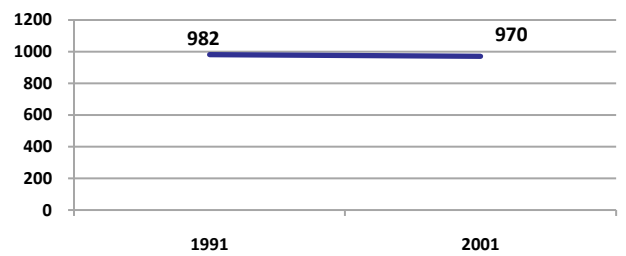
Sex ratio

Females per 1000 males



Sex ratio, 0-6 years

Females per 1000 males



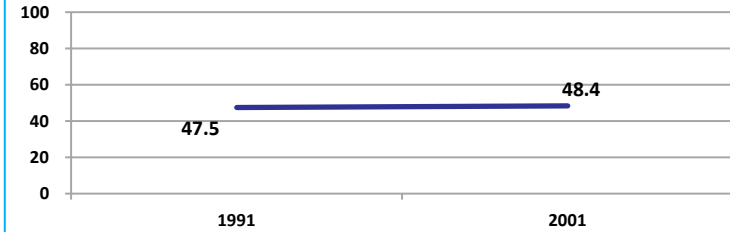
Source: Census

Source: Census

ECONOMY

Work participation rate

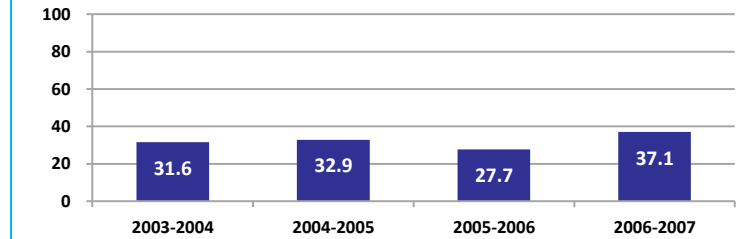
Percent



Source: Census

Net sown area irrigated

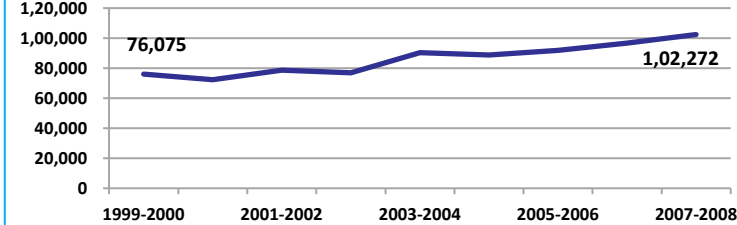
Percent



Source: Census, 2001 Projected

Net district domestic product at constant (1990-2000) prices

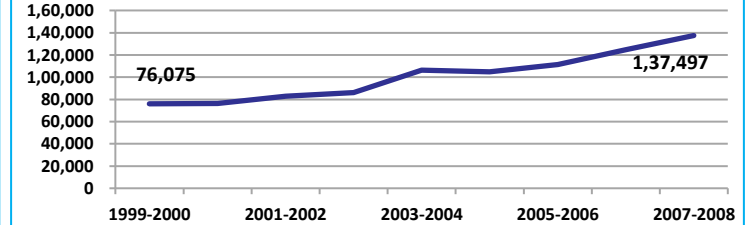
Lakhs



Source: DES, 2009

Net district domestic product at current prices

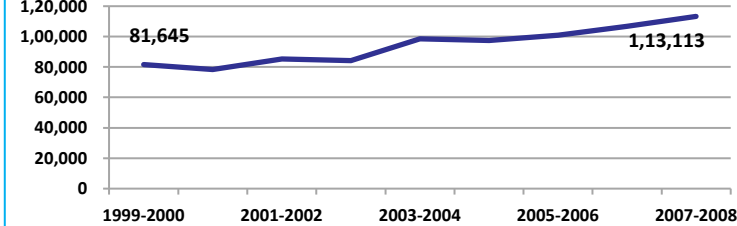
Lakhs



Source: DES, 2009

Gross district domestic Product at constant (1990-2000) prices

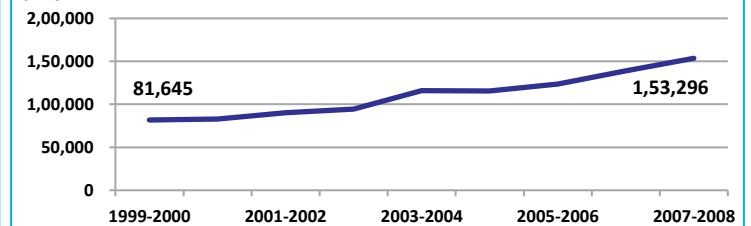
Lakhs



Source: DES, 2009

Gross district domestic product at current prices

Lakhs



Source: DES, 2009



State Planning Commission



Barwani

ECONOMY

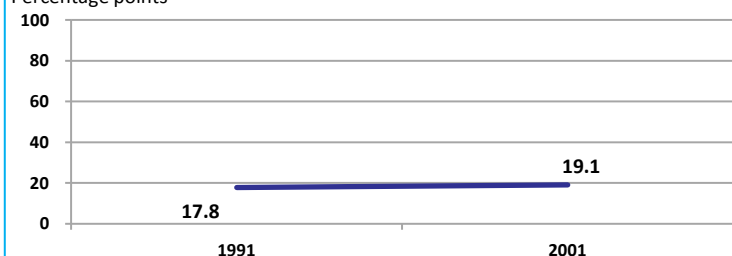
| Location/Caste | Total | Rural | Urban | SC | ST | Non SC/ST | Time Period |
|--|--------|-------|-------|------|-------|-----------|-------------|
| Industrial working population (%) | 557691 | - | - | - | - | - | (2001) |
| Marginal working population (%) | 12.3 | - | - | - | - | - | (2001) |
| Main working population (%) | 36.1 | - | - | - | - | - | (2001) |
| Farmers and agricultural labour in population (%) | 40.9 | - | - | - | - | - | (2001) |
| Schedule caste population (%) | 6.3 | 5.6 | 10.9 | - | - | - | (2001) |
| Schedule tribe population (%) | 67.0 | 76.0 | 14.6 | - | - | - | (2001) |
| Households having none of the six household assets (Radio/Transistor, Television, Telephone, Bicycle, Two wheeler, Four wheeler) (#) | 100470 | 92855 | 7615 | 7796 | 76485 | - | (2001) |

Source: Census

EDUCATION

Gender gap in literacy rate (Male-Female)

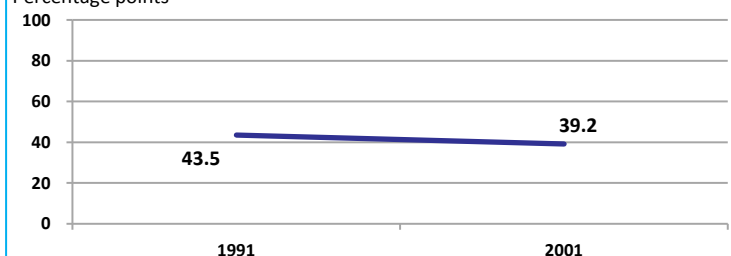
Percentage points



Source: Census

Gap in literacy rate by residence (Urban-Rural)

Percentage points



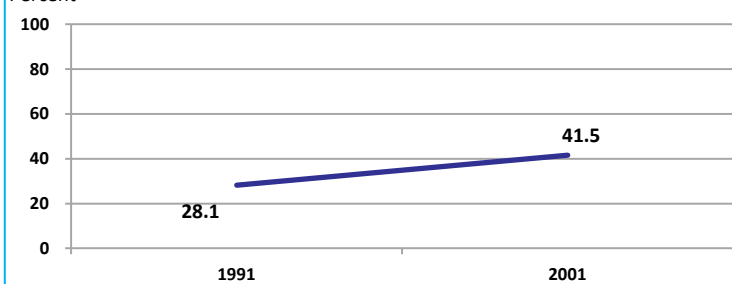
Source: Census

| Location/Sex/Caste | Total | Male | Female | Rural | Urban | SC | ST | Time Period |
|---|-------|------|--------|-------|-------|------|-----|-------------|
| Primary gross enrolment ratio ** | 99.0 | 98.5 | 99.4 | - | - | - | - | (2008-2009) |
| Upper primary gross enrolment ratio ** | 71.5 | 72.6 | 70.2 | - | - | - | - | (2008-2009) |
| Elementary gross enrolment ratio ** | 91.6 | 91.5 | 91.8 | - | - | - | - | (2008-2009) |
| Primary dropout rate (%) ** | - | 20.6 | 17.2 | - | - | - | - | (2008-2009) |
| Ratio of literate women to men (15-24 years) * | 0.6 | - | - | 0.6 | 0.8 | 0.6 | 0.5 | (2001) |
| Persons age 15+ completed primary education (%) * | 26.1 | 34.3 | 17.8 | 19.0 | 61.0 | 18.0 | 9.2 | (2001) |

Source: Census */Rajya Shiksha Kendra **

Literacy rate 7+

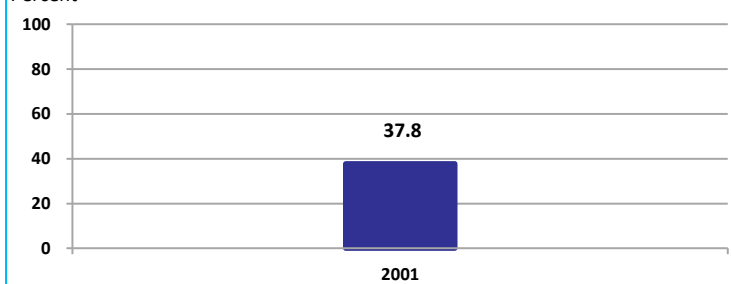
Percent



Source: Census

Literacy rate 15+

Percent



Source: Census

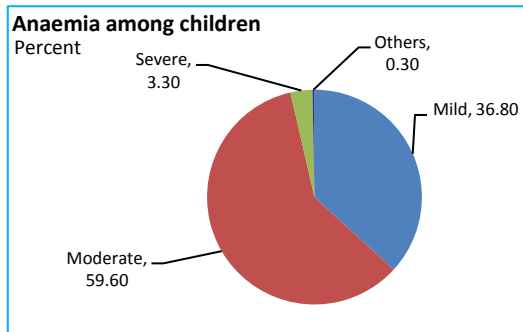


Barwani

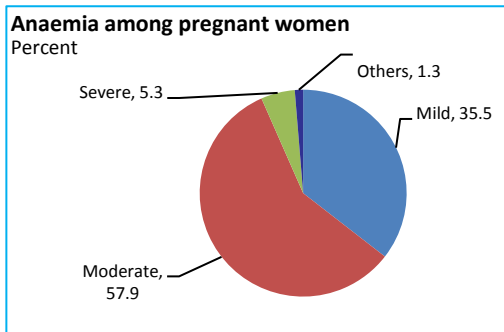
HEALTH & NUTRITION

| | | | | | |
|--|------|---|------|--|------|
| Contraceptive prevalence rate (15-44 yr) | 52.9 | Fully immunized children (12-23 months) | 33.8 | Prevalence of underweight (moderate and severe, <6 yr) | 64.7 |
|--|------|---|------|--|------|

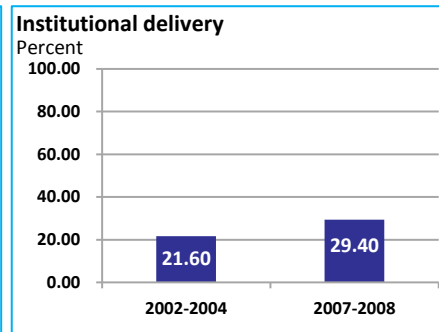
Source: DLHS, 2002-2004



Source: DLHS, 2002-2004

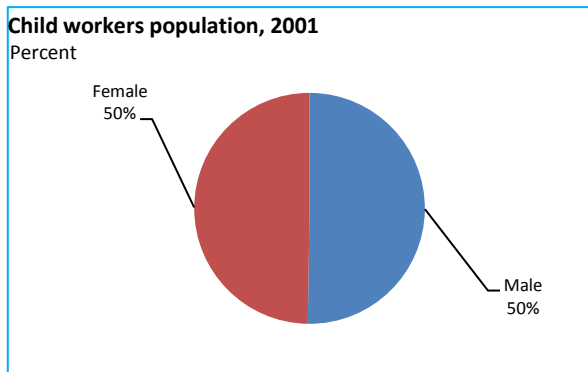


Source: DLHS, 2002-2004

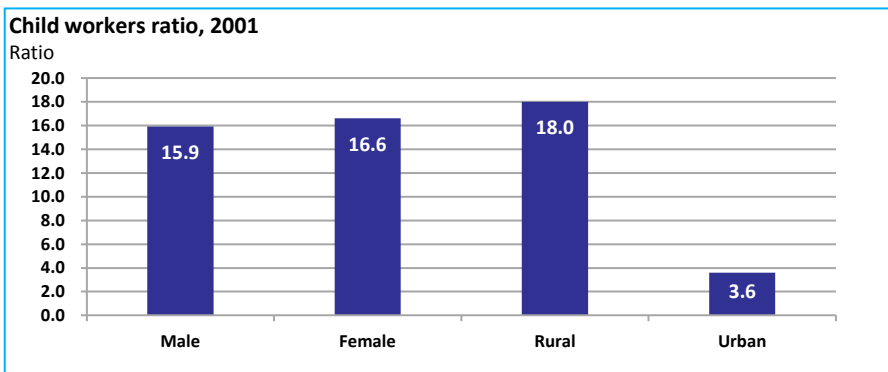


Source: DLHS

CHILD PROTECTION



Source: Census



ENVIRONMENT

| Location/Caste | Total | Rural | Urban | SC | ST | Time Period |
|---|--------|--------|-------|-------|--------|-------------|
| Households living in dilapidated houses (#) | 5477 | 4318 | 1159 | 707 | 3345 | (2001) |
| Households without electricity (#) | 58494 | 56686 | 1808 | 2995 | 50444 | (2001) |
| Households without latrines (#) | 146311 | 134668 | 11643 | 11862 | 105669 | (2001) |

Source: Census

Habitation with drinking water access

| <40 LPCD | 40 to 55 LPCD | With 0 population coverage | With 100% population coverage | With population coverage > 0 and < 100% | Time Period |
|----------|---------------|----------------------------|-------------------------------|---|-------------|
| 0 | 200 | - | 1531 | - | (2009) |

Source: IMIS

INFRASTRUCTURE

| | | | | | |
|---|------|--------|---|------|--------|
| Proportion of villages having any health facility PHC/SHC/AYUSH (%) | 34.5 | (2001) | Proportion of villages having at least a primary school (%) | 89.0 | (2001) |
|---|------|--------|---|------|--------|

Source: Census

