

**GUIDELINE FOR THE CREATION OF "PLANNING CHAIR"
WITH UNIVERSITIES AND RESEARCH INSTITUTES
POVERTY MONITORING AND POLICY SUPPORT UNIT
MP STATE PLANNING COMMISSION, GOVT OF MADHYA PRADESH**

NOTE OF THE PARTNERSHIP GUIDELINE

(THEMATIC PARTNERSHIP WITH ACADEMIA & RESEARCH INSTITUTIONS)

A. BACKGROUND

Universities and Research Institutes by definition are the centres for knowledge generation and partnership. The inherent academic freedom associated with academic institution allows the generation of new knowledge through curiosity-driven research and strategic collaborations with policy holders. However, an academic institution does not function in a manner that is independent of the society within which it is located. As an obligation to society, a quality academic institution is expected to transfer knowledge for the betterment of the society through partnership with Government organizations and promotion of fruitful research for nation's development. Considerable academic potential and research capacity is available at the national and international level. Which must be harnessed for development and policy support drive for the state like Madhya Pradesh. Partnership with academic institutions, policy institutes and applied economic research through formation of thematic chairs (**pl. see the annexure**) with Institutes of national repute like Indian Institute of Science (IISc), India, Indian Institute of Science Education and Research (IISER), India, Tata Institute of Fundamental Research (TIFR), India, several IITs and IIMs, Delhi School of Economics New Delhi, National Institute of Public Finance New Delhi, JNU New Delhi, Banaras Hindu University etc. will surely lead to innovation and better delivery of service.

Apart from national scenario, The State is home to seven traditional universities and at least four other universities, including the Jawaharlal Nehru Krishi Vishwa Vidyalaya (JNKVV), Jabalpur, the Makhn Lal Chaturvedi Rashtriya Patrakarita Evam Sanchar Vishwavidyalaya, Bhopal and the Rajiv Gandhi Technical University, Bhopal. The seven traditional universities alone have 312 government colleges affiliated to them, including 84 post-graduate and 224 graduate colleges, and the number of sanctioned teaching staff positions at the Professor and Assistant Professor level in these government colleges exceeds 6,000.

Further, the State has also several institutions of national repute such as Central University Sagar, the Indian Institute of Forest Management (IIFM), Bhopal, Indian Institute of Management (IIM), Indore, Indian Institute of Soil Science (IISS), Bhopal, the Pandit Sunderlal Sharma Central Institute of Vocational Education (PSSCIVE), Bhopal and Xavier Institute of Development Action and Studies (XIDAS), Jabalpur, IITM Gwalior, National Institute of Architect and Planning Bhopal etc.

A brief review of the profiles of 11 universities and another 11 academic and research institutions suggests that in addition to their core activities (such as teaching), many of these pursue research agendas, consultancy work and training activities which

could be of potential relevance to the state development in the line of VISION 2018 as it pursues its mandate and seeks to engage the academic and research community in the State and foster innovation in sector like Health, Education and all activities devoted to of human resource, Infrastructure and Environment issues.

B. CREATION OF CHAIR WITH UNIVERSITIES AND RESEARCH INSTITUTES

Planning Chair – A vital tool to ensure the creation of knowledge and transformation of theoretical knowledge in to policy actionable pointers to support Madhya Pradesh State Planning Commission in their mandate. Also a scheme to ensure excellence in faculty development. It is expected that this idea of creating chair/s in academia will lead to strengthen the existing arrangement of Monitoring and Evaluation and skill building in the state. Initially the partnership is open only for the govt. institutions and in future this may be opened with for all institutes other than government after due consideration of yearly learning experience.

The responsibilities of a Planning Chair include the following:

- **Evidence based policy Recommendations;** If changes in the design of policies or programmes are desired, chair will come out with evidence based recommendations to SPC and concerning departments.
 - **Creation of Knowledge :** Encourage knowledge partnerships on cross-cutting issues relating to poverty, inequality, gender and social exclusion, besides Sector-specific issues undertaken or commissioning the specialized research
 - Preparation of Professional DPR, perspective Plans and technical estimations of mega projects
 - Sector-specific Research, Consultancy and Training and Knowledge Sharing
 - Creation of Thematic Policy Advisory Panels:
 - Data collection and analysis of quality research
- a) **Who Can Apply:** Applying institutions (such as Govt. Universities, Research organizations, Public Policy institutes, Academic Organisations) are invited to submit proposals with MP State Planning Commission to establish 'Planning Chair' that contribute directly to the objectives of the MPSPC.
- b) **Selection Process for the chair:**
- Full discussion and relevant debate on all aspects with Partner institutes and Member Secretary MPSPC as Chair Person and other officials should take place to support and inform the request to ensure all relevant views and comments are incorporated as appropriate.
 - Once agreement has been reached a formal request to create a new chair must go to SPC.
 - This would usually be in the form of a short paper outlining the case for the creation of the Planning Chair including an anticipated start date.
 - At the submission of proposal stage, applicants should:
 - Explain the rationale for proposing chair as a sound approach for achieving the set objectives.
 - Explain the proposed funding arrangement to cover the cost of the planning chairs.

- Applicants will be asked to explain or describe the following:
 - Relevance of the chair in achieving the proposed project goals;
 - Outline of the proposed activities as well as the program of research, training and related activities to be undertaken by chair
 - Track record of the proposed institutions in terms of no. of published research papers and contributed in conferences /seminars.

C. INSTITUTIONAL ARRANGMENT FOR THE FUNCTIONING AND OVERSEEING THE SCHEME:

- 01.** To define the vision and strategic direction for the chair the **Executive Steering Committee (ESC)** will be formulated under the MP State Planning Commission. The HR arrangement's structure, financial size and programmatic stream of proposed chair will be decided and finalised by Executive Steering Committee (ESC) looking at project nature and goal necessities. The ESC would have the following added responsibilities for the Planning Chairs:
- Provide executive and organizational support for chair;
 - Review and approve major project decisions; and
 - Serve as overall chair oversight group and evaluate progress against goals.
 - Providing advice (and making decisions) about changes to the project as it develops.

Members of ESC:

- Additional Chief Secretary/Member Secretary, MPSPC- Chairperson
- Principal Adviser (M) MPSPC -Member Secretary
- Principal Secretary, Govt. of MP from the concerning departments/ subject
- DY. Team Leader, PMPSUS/PRC MPSPC
- University representative nominated by VC / Chair head

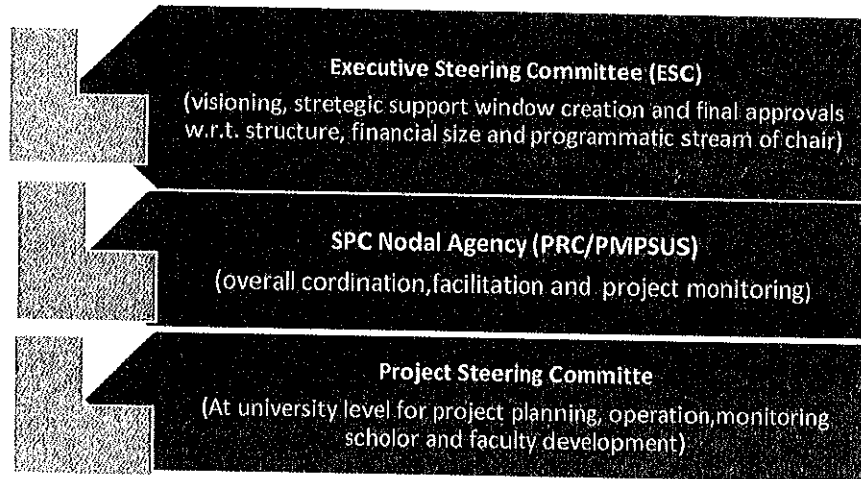
- 02. Nodal Agency at MPSPC level:** The Plan Review Cell (PRC) within the Madhya Pradesh State Planning Commission (MPSPC) is mandated to provide technical support to state govt. will be the Nodal Agency for the overall facilitation w.r.t. successful execution of the scheme under the guidance of ESC.

Members of Nodal Agency:

- Principal Adviser (M) MPSPC- Chairman
- DY. Team Leader, PRC, MPSPC- Member Secretary
- Specialist PRC, MPSPC
- Research Associates, PRC, MPSPC
- Admin. Assistant PRC, MPSPC

- 03. Project Steering Committee (PSC):** To ensure effective chair planning, operation, monitoring also the scholars and faculties development the project at partner level the PSC would be formulated involving domain experts and senior academician. PSC helps to steer a project through from start to completion.

The Project Steering Committee's role is to provide advice, ensure delivery of the project outputs and the achievement of project outcomes. This may include such tasks as, Providing input to the development of the project, including the evaluation strategy; Identifying the priorities in the project, providing advice on the budget, Defining and helping to achieve the project outcomes, Monitoring timelines, monitoring the quality of the project as it develops, The Project Steering Committee would provide support, guidance and oversight of progress.



Members of Project Steering Committee (PSC):

- Chair Head /Co Chair
- MPSPC/PRC representative (As project Assessing member)
- Professor or Head of the Department of Concerning subject
- Specialist and domain expert
- Research Associates/SRF/JRF
- Representation from Volunteer organization or consulting agency.

D. DURATION;

In accordance with the requirements of the project Partnership, Chair must have a duration of two to Five years, and may continue on review basis.

E. FUNDING FORMULA:

- The partner institution (Min.20% of total cost) and the MP SPC (Maxi. 80% of total cost) will pool resources (cash or in-kind resources) to cover the cost of the Planning Chair.
- SPC funding support would be performance based disbursement in a project mode.
- MPSPC funds can be used to cover other expenses that are eligible according to the consultancy services and other project requirements.

F. SUPPORTING INFORMATION AND DOCUMENTATION REQUIRED:

- A Conceptual/Technical note with Detailed Project Proposal in soft and hard copy (02 sets)
- A letter clearly committing resources from the institution involved in supporting the Planning chair must be attached to the full proposal.

Above technical note of state guidelines is proposed for approved by ACS (Planning, Economics and Statistics Govt. of MP /Member Secretary, MP State Planning Commission on dtd. 27/07/2014.


28/07/14
(Yogesh Mahor)

Dy Team Leader, Plan Review Cell/PMPSUS
MP State Planning Commission

ANNEX A: 23 THEMES FOR COMPREHENSIVE DEVELOPMENT OF THE STATE

1. Food & Nutrition Security
2. Democratic Decentralization and Decentralized Planning
3. Housing & Infrastructure
4. Education
5. Health and Sanitation
6. Employment Guarantee Plan –Primary, Secondary & Tertiary
7. Youth Welfare, Sports Culture, Entertainment, Tourism, Archaeology & Ancient Monuments & Heritage Protection
8. Research & Development (Science, Technology and Social Sector Research)
9. Communication, Information Technology & Cyber Security
10. Base Level Living (Bench Marking)
11. Insurance Coverage
12. Justice Administration
13. Disaster Management
14. Climate Change & Safe Environments
15. Gram Sabha, Local Self Governance & Civic Bodies Empowerment
16. Preservation of Natural Resources
17. Women, Children, Senior Citizen
18. Physically Challenged Protection
19. SC/ST/OBC and Economically Backward Section Empowerment
20. Power and Energy Management
21. Mass Communication & Public Relations
22. Human Resources, finance & Banking Development Plan (Capacity Building, Skill Development, New Processes & Re-engineering)
23. Internal Security & Safety